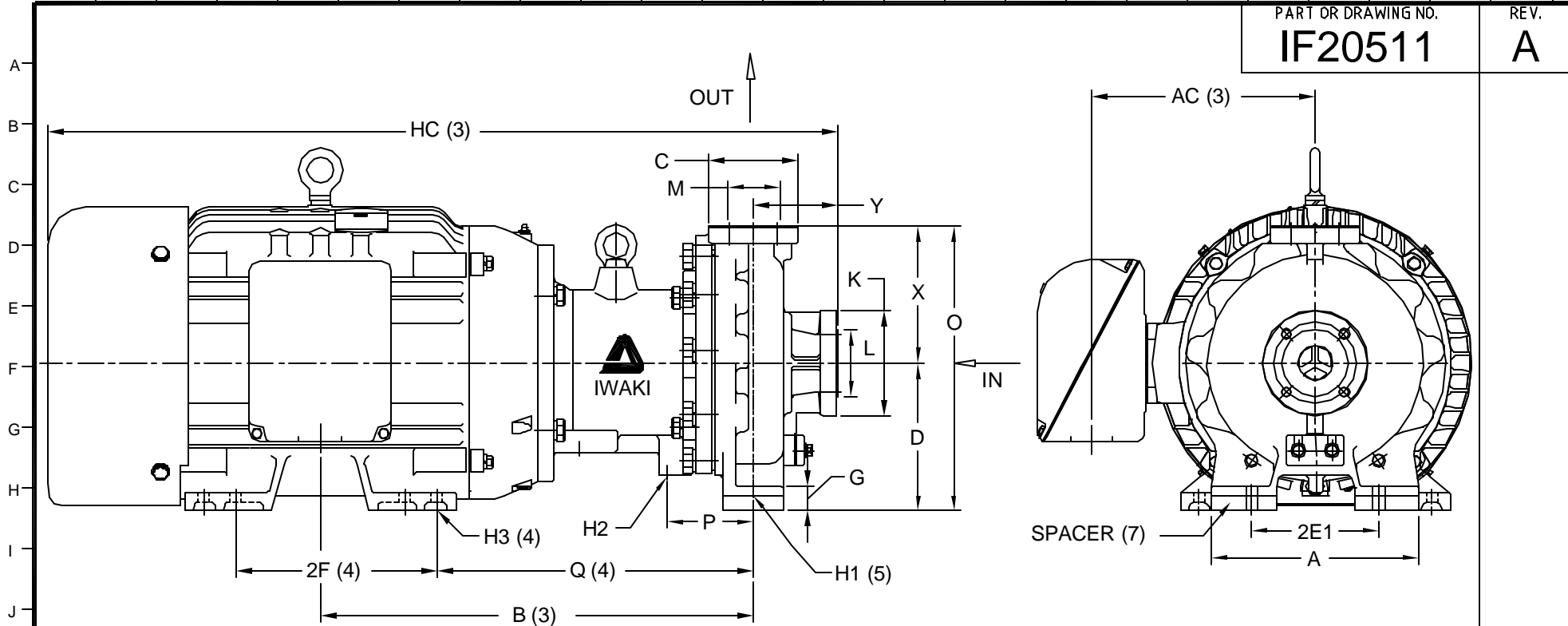


1 2 3 4 5 6 7 8 9 10 11 12 13 14 15 16 17 18 19 20 21 22 23 24 25

PART OR DRAWING NO. **IF20511** REV. **A**




PUMP DIMENSIONS (1)															
A	AC (3)	B (3)	D	2E1	2F (4)	G	H1 (5)	H2	H3 (4)	HC (3)	O	P	Q (4)	X	Y
9.84"	10.56"	20.47"	7.00"	6.00"	9.50"	1.14"	0.55"	3/8"-16 UNC	0.52"	37.35"	13.50"	4.09"	14.97"	6.50"	4.00"

MODEL	HP/ FRAME	PUMP FLANGES (2)		DIMENSIONS			
		SUCTION	DISCHARGE	K	L	C	M
<b>MDM-15182</b>	<b>25/284TSC</b>	1 1/2"	1"	5.00"	3.15"	4.25"	2.48"

**NOTES AND REFERENCES:**

- (1) ALL DIMENSIONS IN INCHES. ALL TOLERANCES  $\pm .125"$ , CONSULT IWAKI AMERICA FOR MORE DETAILS.
- (2) BOLT HOLE LOCATIONS OF SUCTION AND DISCHARGE FLANGES CONFORM TO ANSI B16.5 150 LB STANDARD. FLANGE BOLT HOLES HAVE 1/2" -13 UNC THREADS.
- (3) DIMENSION MAY VARY BASED ON MOTOR MANUFACTURER.
- (4) NEMA MG 1-1993, PART 4 USED FOR REFERENCE.
- (5) SLOTS ARE OPEN ENDED TO FRONT OF FRAME.
- (6) DRAWN PER 52B402899 (MDM1518-2\_KKF25A-\_2).
- (7) SPACER MDM8006, 0.75" HEIGHT AND SLOTTED TO FRONT.

ECO#	DESCRIPTION					DATE	REV. LTR.	
PUMP WEIGHT 154 LB	WET-END/BEARING MATERIALS CFRETFE OR PFA W/SIC							
EDT	08	07	04	CJC	1		<b>IF20511</b> PART OR DWG. NO.	
DRAWN	DAY	MO.	YR.	RELEASED	SHEET NO.			
		5 Boynton Rd. Hopping Brook Park Holliston, MA 01746 (508) 429-1440 <a href="http://www.IwakiAmerica.com">www.IwakiAmerica.com</a>						
TITLE		<b>MDM-15182 (25 HP)</b>						<b>A</b> REV.
		Dimensional Drawing						