



DIVISION OF: BAKER MANUFACTURING COMPANY, LLC

133 Enterprise Street
Evansville, WI 53536
Phone: (800) 871-9250
(608) 882-5100
Fax: (608) 882-3777

May 7, 2008

Dear Valued Customers and Distributors,

Haight Pump is pleased to announce its newest addition to our family of *Pumps that Perform*. Our new DIU series pumps are capable of handling flow rates of 120 to 240 GPM and will be beneficial in a wide variety of applications.

Currently we are able to provide the following three new sizes; 120, 180, and 240 GPM. Some of the key features include: built in shaft seal flexibility, close coupled design & bed plate assemblies, and 650 PSI discharge pressure capability, with speeds up to 1800 RPM.

The DIU series pumps feature ductile iron housings, steel shaft and pinion gears, and iron rotor with multiple bearing materials. Shaft sealing will include packing seals, lips seals & multiple mechanical seal types, with elastomers to suit. Other features and options are available depending on specific needs and applications.

For more information on these or any of the products offered by Haight pump please call: **1-800-871-9250** or visit Haight Pumps website at www.haightpump.com.

We at Haight Pump appreciate your business, and look forward to being able to serve even more of your pumping needs.

Sincerely,

A handwritten signature in black ink that reads "Cal Higginbotham". The signature is fluid and cursive, with a long horizontal stroke at the end.

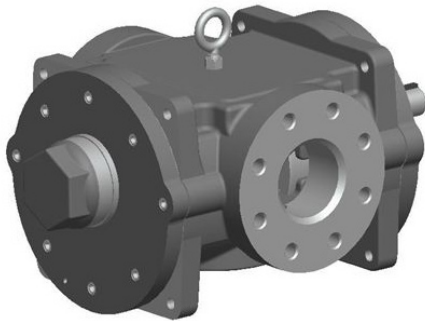
Cal Higginbotham
Haight Pump Division Manager

Enclosure

DIU SERIES 120-240 GPM ROTARY GEAR PUMPS

The First Release of the New Large Flow DIU Series Pumps

Haight Pump is proud to announce the new large flow DIU series pumps. The “Universal” design has been extended to handle flow rates from 120-240 gpm! Flexible, quick, and incredibly reliable; everything you have come to expect from Haight Pump.



Standard Construction Features:

- Ductile Iron Housing
- Steel Shaft and Pinion Gears
- Iron Rotor and Bearings
- Buna N Lip Seals and Elastomers

Options:

- Alternate Shaft Seal and O-ring Elastomer Materials – Neoprene, Silicone, Teflon or Viton
- Lip seals
- Type 21, 2B, and 2 mechanical seals
- Venting options include: clockwise, counter-clockwise, and bi-rotational
- Optional Relief Valve

Applications:

- Petroleum Products (fuel transfer/bulk transfer)
- Lubrication Systems • Food Processing • Soap
- Detergent Products • Paper Products • Ship building
- Mining

Key Features:

- ❑ 3 sizes ranging from 120 gpm to 240 gpm
- ❑ Built in Shaft Seal Flexibility
- ❑ Less moving Parts reduces Maintenance and Wear
- ❑ Close Coupled design eliminates shaft mis-alignment and related failures
- ❑ 250 PSI Discharge Pressure Capability
- ❑ 300# ANSI Flange; Inlet & Outlet Ports
- ❑ “Gear within a Gear” design for quiet operation
- ❑ Direct Drive - speeds to 1800 RPM

NEW Sizes Now Available

120 GPM
180 GPM
240 GPM

Other Sizes Available

1 GPM	10 GPM	44 GPM
3 GPM	15 GPM	54 GPM
5 GPM	20 GPM	60 GPM
7 GPM	24 GPM	70 GPM
8 GPM	30 GPM	80 GPM
9 GPM	40 GPM	

For more information contact:

Haight Pumps 133 Enterprise Street • Evansville, WI 53536 Phone: 800-871-9250 • Fax: 608-882-3777

Website: haightpump.com

APPLICATION SOLUTIONS BY TYPES OF SYSTEMS

Application Category	Typical Applications	Application Specific Adaptations
Refrigeration Systems	<ul style="list-style-type: none"> • High pressure compressor lubrication • Liquefied refrigerant circulation 	<ul style="list-style-type: none"> • Custom mounting • Contaminated lubricants • High inlet pressures • High pressure/thin fluid conditions • Custom seal configurations
Lubrication Systems	<ul style="list-style-type: none"> • Shipboard systems • Power transmission systems • Conveyor systems • Generator systems • Compressors • CNC machinery • Forming machinery • Lubricant cooling systems 	<ul style="list-style-type: none"> • Corrosion resistant designs • Custom mounting • Special direct drive designs • Double pump designs
Filtration Systems	<ul style="list-style-type: none"> • Electric transformers • Cooking oil • Fuels • Hydraulic fluids • Lubrication products • Machine tool coolants • Process stream by-products 	<ul style="list-style-type: none"> • High inlet vacuum designs • Special seals • Hardened and corrosion resistant construction • High temperature designs • Special pump designs
Fueling	<ul style="list-style-type: none"> • Aircraft refueling systems • Portable refueling systems • Engine or remote mounted fuel systems 	<ul style="list-style-type: none"> • Direct drive • DC drive • Pneumatic drive • Hydraulic drive • Custom mounting • Special sealing designs
Injection Systems	<ul style="list-style-type: none"> • Expandable foams • Resins • Adhesives • Hot tar • Thin film lubrication for metal forming • Agricultural chemicals • Animal feed supplements 	<ul style="list-style-type: none"> • Custom mounting designs • Hardened and corrosion resistant designs • High temperature conditions • Tractor and truck mounted PTO drives
Marine	<ul style="list-style-type: none"> • Main engine and drive train lubrication • Loading and unloading fuel & lubrication products • Salt water wash-down systems • Winch lubrication • Fish processing waste • Bilge scavenging pumps • Aircraft/helicopter refueling systems 	<ul style="list-style-type: none"> • Custom mounting and drive designs • Corrosion resistant materials • Spark resistant construction
Power Transmissions	<ul style="list-style-type: none"> • Gear box bearing and gear lubrication • Transmission lubrication • Drive shaft bearing lubrication • Lubricant cooling systems • Lubricant filtration 	<ul style="list-style-type: none"> • Custom mounting and drive designs
Thermal Processing	<ul style="list-style-type: none"> • High temperature circulation • High temperature filtration 	<ul style="list-style-type: none"> • Special construction features for elevated temperature operations
API Type Application	<ul style="list-style-type: none"> • Tank battery circulation • Sampling systems • LAC systems • Intermediate pressure pipeline transfer 	