

HYDROMATIC™ SELF-CLEANING STRAINERS

U.S. PATENT NO. 5,830,366

THE CONCEPT

As raw water strainers do their job, filter baskets become clogged with debris and flow to the connected device is reduced, resulting in the need for system shut-down for cleaning and maintenance. HYDROMATIC™ strainers eliminate untimely shut-downs and maintenance by



conducting a periodic self-cleaning cycle (the user selects the cleaning interval) with its powerful internal macerator. Debris is pumped overboard without shutting down the connected device.

COMMON FEATURES

- A 30-second cleaning cycle is automatically performed at user-selected intervals.
- Optional interface with SSA system (see page 15) initiates cleaning cycle when flow is reduced, independent of the pre-set cleaning interval.
- The "Purge" option over-rides the selected cleaning interval and performs a one-time 30-second cleaning cycle.
- Powerful macerator grinds debris and discharges overboard below the waterline.
- "Ignition Protected" motors for DC models.
- AC models available in various HP and Phase options – 115VAC, 60Hz, 1-phase is standard.
- 970 and HSE models function as a sea chest to provide filtered water to multiple devices.
- Installation can be horizontal or vertical (flooded inlet required).
- HSE models are available with a bronze enclosure in place of clear sight glass. Specify AHSEF-(pipe size)-(voltage).



911-1000
Provides filtered water to a single device and has 1" NPT ports for Water In, Water Out and Debris Out.



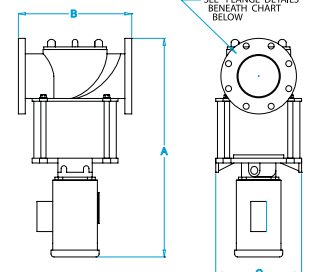
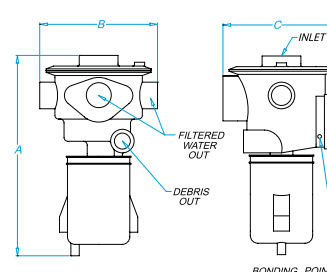
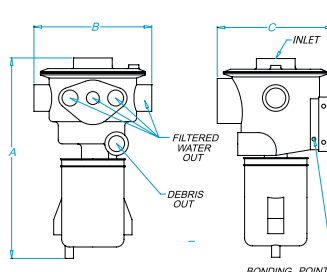
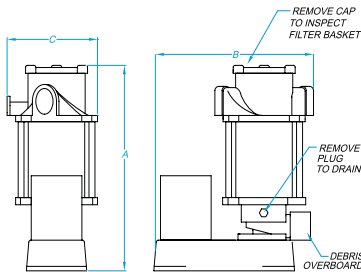
970-1500
Provides filtered water to multiple devices, and has a 1-1/2" NPT inlet port with multiple 1/2", 3/4" and 1" ports for connecting devices. Debris is pumped out through a 3/4" NPT port.



970-2020
Provides filtered water to a single 1-1/2" or 2" device. Debris is pumped out through a 3/4" NPT port.



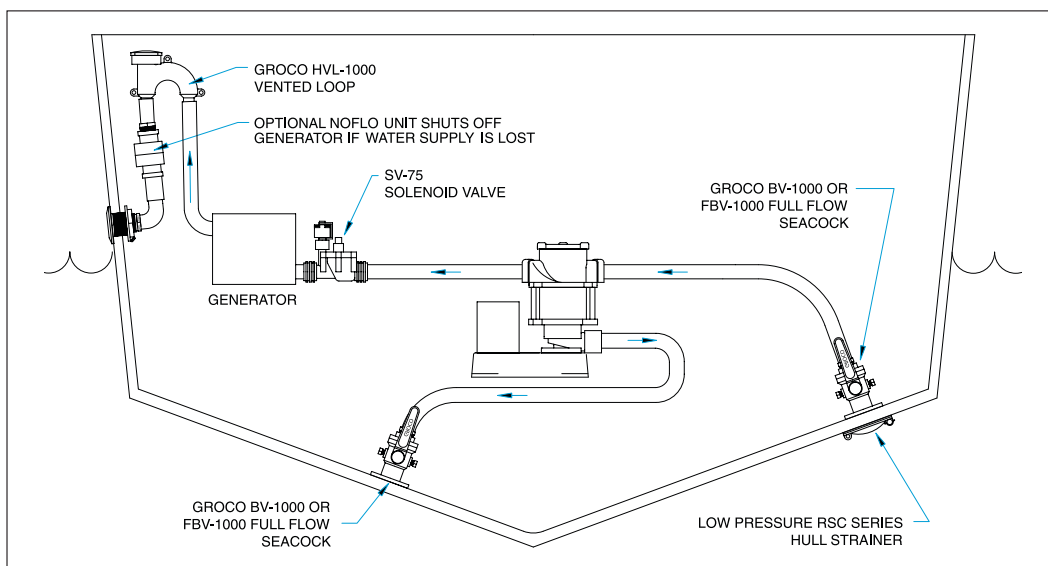
HSE
Provides filtered water to 4", 5" or 6" device, or may be used as a sea chest to provide filtered water to multiple smaller devices. Debris is pumped out through a 1" NPT port.



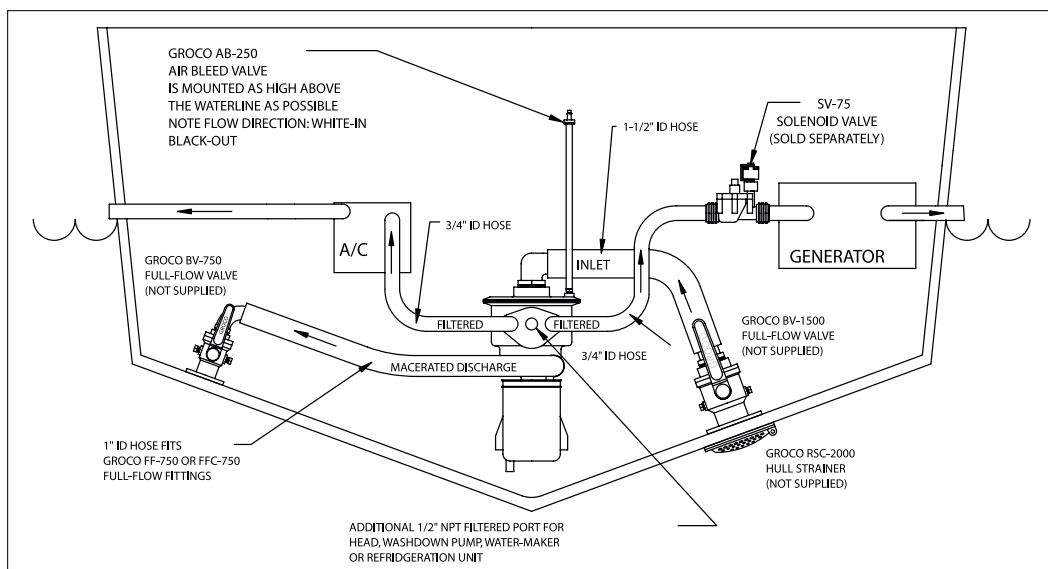
MODEL	INLET	OUTLET	DEBRIS DISCHARGE	A	B	C	RATIO	WEIGHT
911-1000 (VOLTAGE)	1" NPT	1" NPT	1" NPT	11.5	9.2	5.3	21:1	15
970-1500 (VOLTAGE)	1-1/2" NPT	(1) 1/2", (2) 3/4", (2) 1"	3/4" NPT	13.2	6.9	7.6	11:1	30
970-1515 (VOLTAGE)	1-1/2" NPT	1-1/2" NPT	3/4" NPT	13.2	6.9	7.6	11:1	30
970-2020 (VOLTAGE)	2" NPT	2" NPT	3/4" NPT	14.7	6.9	7.6	9:1	31
HSE-4000 (VOLTAGE)	4" NPT	4" NPT	1" NPT	31.7	13.0	13.0	10:1	123
HSEF-4000 (VOLTAGE)	4" FLANGE	4" FLANGE	1" NPT	31.7	16.5	12.5	10:1	144
HSEF-5000 (VOLTAGE)	5" FLANGE	5" FLANGE	1" NPT	31.7	16.5	12.5	8.1:1	160
HSEF-6000 (VOLTAGE)	6" FLANGE	6" FLANGE	1" NPT	31.7	16.5	12.5	6.7:1	173

FLANGE DETAILS: HSEF-4000 = 9.0" DIA., (8) .750 DIA. HOLES ON 7.5 BC
HSEF-6000 = 11.0" DIA., (8) .875 DIA. HOLES ON 9.5 BC

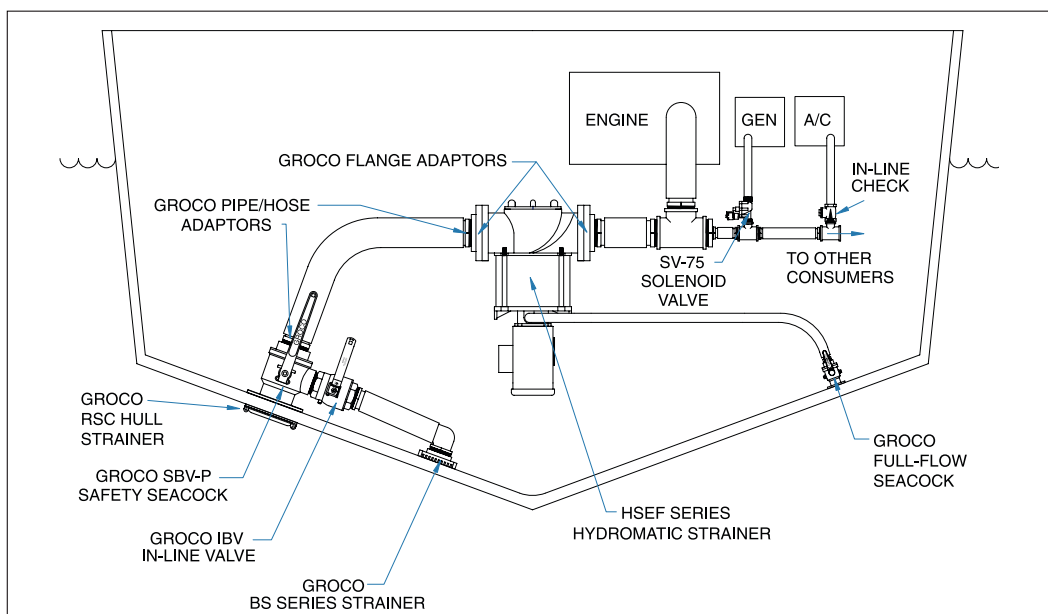
HSEF-5000 = 10.0" DIA., (8) .875 DIA. HOLES ON 8.5 BC



911 SAMPLE INSTALLATION



970 SAMPLE INSTALLATION



HSE SAMPLE INSTALLATION