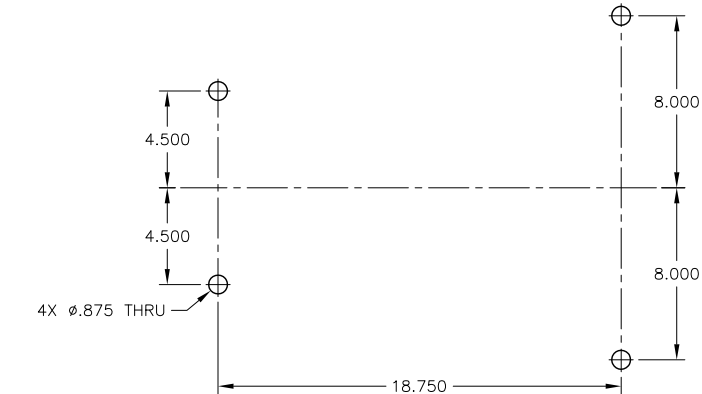
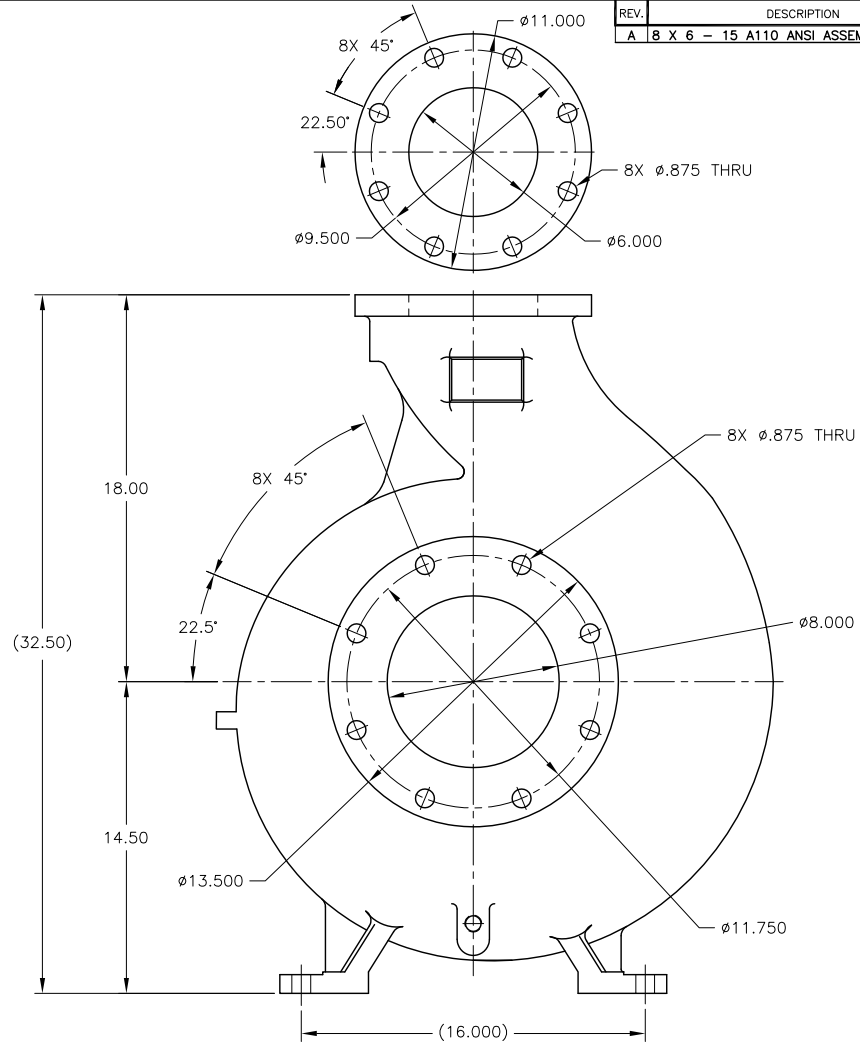
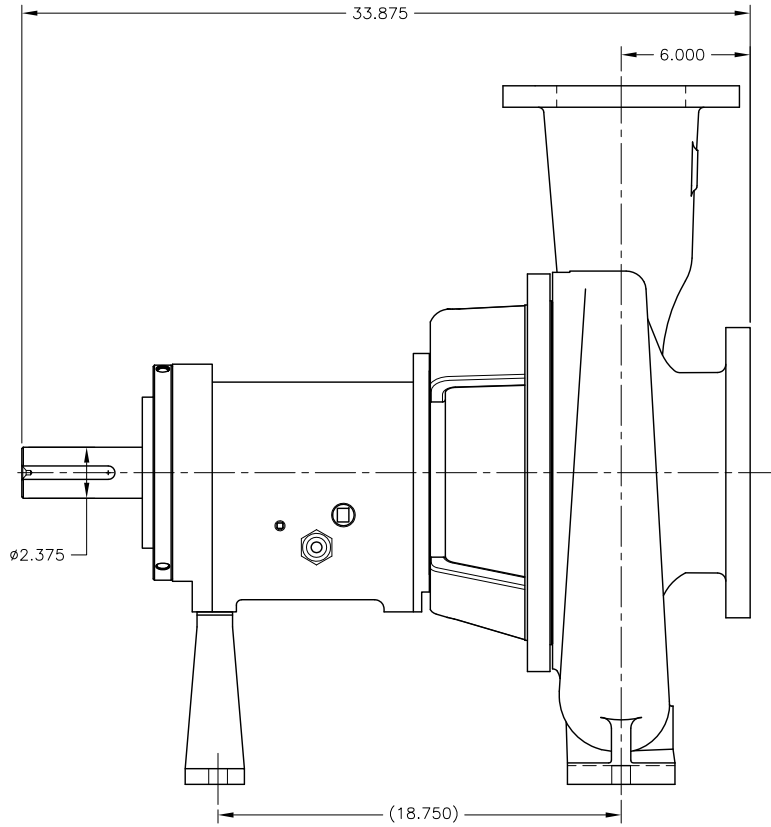


CAD generated and maintained drawing. All printed and electronic copies outside of Griswold's engineering database are "Uncontrolled" and shall be used for reference only.

NOTES: UNLESS OTHERWISE SPECIFIED

1. DIMENSIONS AND TOLERANCES PER ANSI Y14.5M-1982.
2. * INDICATES DIMENSIONS AND/OR FEATURES MODIFIED ON CURRENT REVISION LEVEL.
- * 3. THIS PUMP MAY HAVE TAPPED BOLT HOLES IN THE SUCTION FLANGE PER ANSI'S ALLOWANCE.

REV.	DESCRIPTION	BY	APP.	DATE
A	8 X 6 - 15 A110 ANSI ASSEMBLY	R.A.		08/24/10



DO NOT SCALE DRAWING	
UNLESS OTHERWISE SPECIFIED	
DIMENSIONS ARE IN INCHES	
TOLERANCES ARE:	
FRACTIONS	± -
DECIMALS .XX	± -
.XXX	± -
ANGLES	± -
SCALE 1/4	SHEET 1 OF 1



GRISWOLD PUMP COMPANY
 22000 VAN BUREN ST.
 GRAND TERRACE, CA 92313
 PHONE: (800) 943-9223, FAX: (800) 752-2928

TITLE		ASSEMBLY, 8 X 6 - 15 A110 ANSI	
DRAWN BY	R. ANDRADE	DATE	08/24/10
CHECKED BY		DATE	
APPROVED BY		DATE	
ASSY. NO.		DRAWING NO.	
		8615A110	
REV.			

THIS DOCUMENT AND ITS CONTENTS ARE PROPRIETARY TO WILSON PUMP AND ENGINEERING CO. ANY REPRODUCTION, DISCLOSURE OR USE OF THIS DOCUMENT IS EXPRESSLY PROHIBITED EXCEPT AS OTHERWISE AGREED TO IN WRITING.