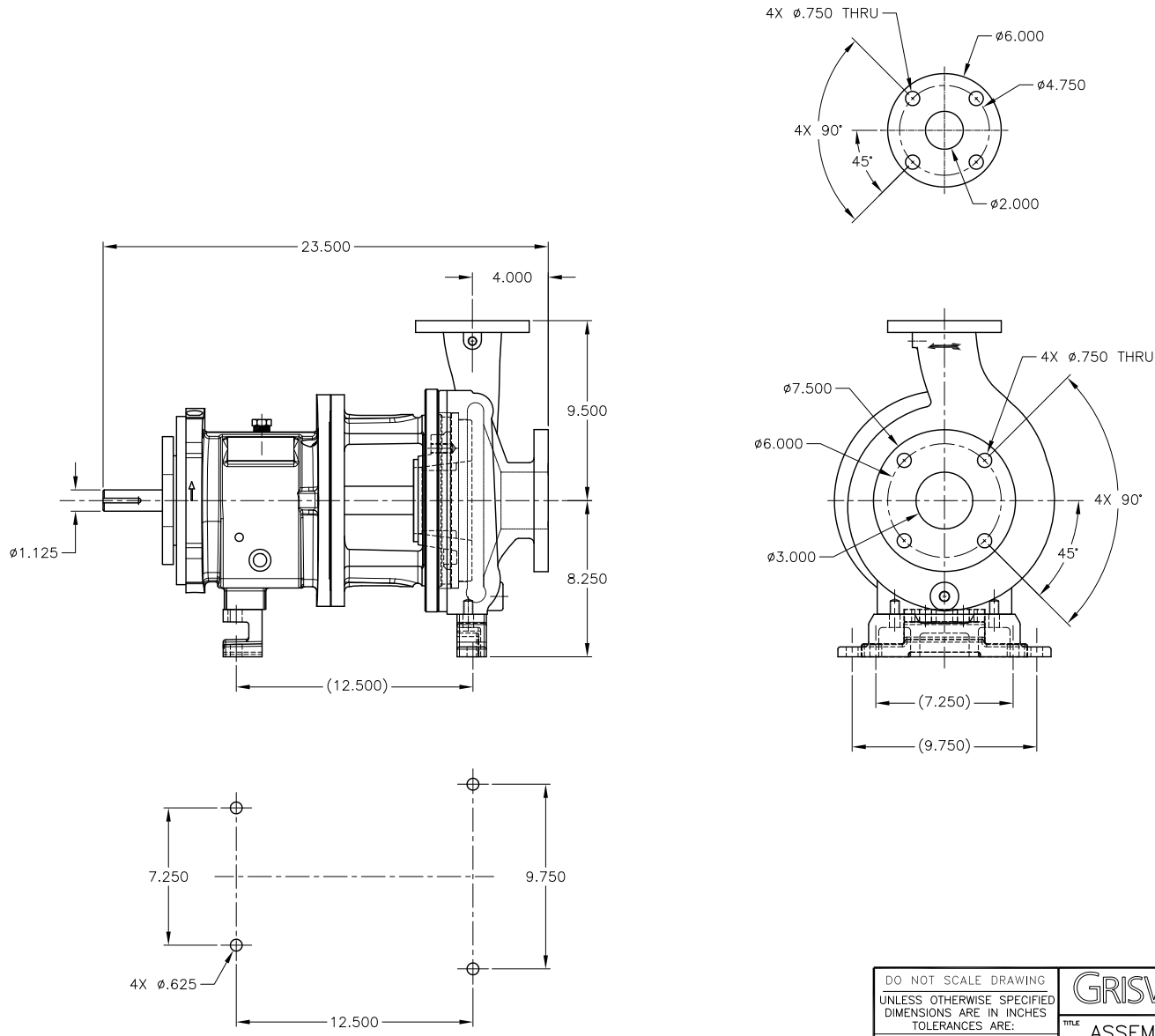


| REV. | DESCRIPTION | BY | APP. | DATE |
|------|-----------------------------|----|------|------|
| A | 3 x 2 - 8 A60 ANSI ASSEMBLY | | M.H. | |

NOTES: UNLESS OTHERWISE SPECIFIED

1. DIMENSIONS AND TOLERANCES PER ANSI Y14.5M-1982.
2. * INDICATES DIMENSIONS AND/OR FEATURES MODIFIED ON CURRENT REVISION LEVEL.



THIS DOCUMENT AND ITS CONTENTS ARE PROPRIETARY TO WILSON PUMP AND ENGINEERING CO. ANY REPRODUCTION, DISCLOSURE OR USE OF THIS DOCUMENT IS EXPRESSLY PROHIBITED EXCEPT AS OTHERWISE AGREED TO IN WRITING.

| | | | | | |
|---|--|------------------------------------|--|---|--|
| DO NOT SCALE DRAWING UNLESS OTHERWISE SPECIFIED DIMENSIONS ARE IN INCHES TOLERANCES ARE: | | GRISWOLD | | GRISWOLD PUMP COMPANY 22080 VAN BUREN ST. GRAND TERRACE, CA 92313 PHONE: (800) 843-2223, FAX: (800) 752-2929 | |
| FRACTIONS ± - | | TITLE ASSEMBLY, 3 X 2 - 8 A60 ANSI | | | |
| DECIMALS .XX ± - | | DRAWN BY M. HIATT | | DATE 05/07/10 | |
| .XXX ± - | | CHECKED BY | | ASSY. NO. | |
| ANGLES ± - | | SCALE 1/1 | | SHEET 1 OF 1 | |
| APPROVED BY | | DATE | | DRAWING NO. 328A60 | |
| | | | | REV. A | |