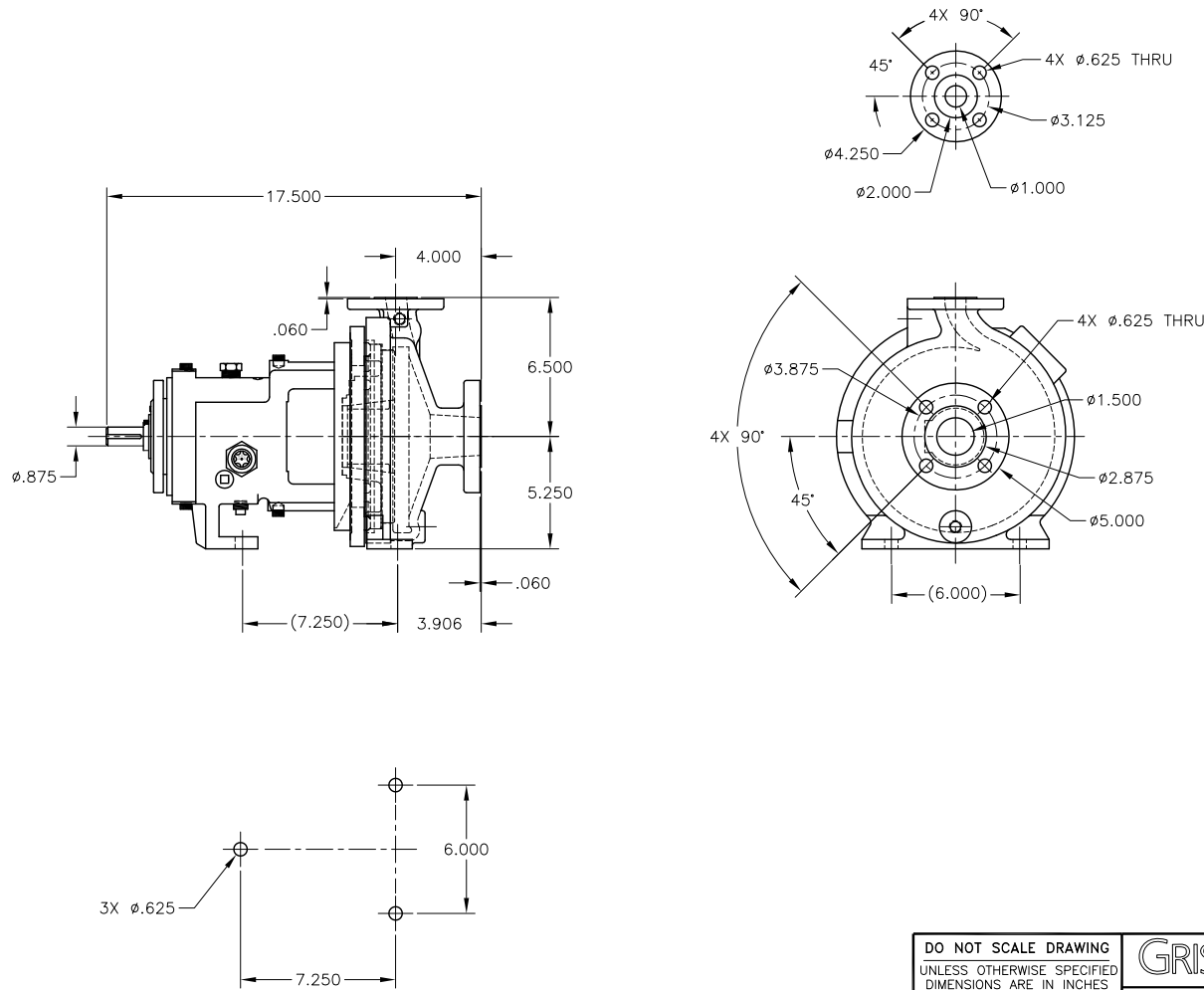


CAD generated and maintained drawing. All printed and electronic copies outside of Griswold's engineering database are "Uncontrolled" and shall be used for reference only.

NOTES: UNLESS OTHERWISE SPECIFIED

1. DIMENSIONS AND TOLERANCES PER ANSI Y14.5M-1982.
2. * INDICATES DIMENSIONS AND/OR FEATURES MODIFIED ON CURRENT REVISION LEVEL.

REV.	DESCRIPTION	BY	APP.	DATE
A	1.5 X 1 - 8 AA ANSI ASSEMBLY	M.H.		



THIS DOCUMENT AND ITS CONTENTS ARE PROPRIETARY TO WILSON PUMP AND ENGINEERING CO. ANY REPRODUCTION, DISCLOSURE OR USE OF THIS DOCUMENT IS EXPRESSLY PROHIBITED EXCEPT AS OTHERWISE AGREED TO IN WRITING.

DO NOT SCALE DRAWING		GRISWOLD		GRISWOLD PUMP COMPANY	
UNLESS OTHERWISE SPECIFIED DIMENSIONS ARE IN INCHES				32080 15th STREET ST. GRAND TERRACE, CA 92313	
TOLERANCES ARE:				PHONE: (800) 843-9223, FAX: (800) 752-2929	
FRACTIONS \pm -		TITLE		ASSEMBLY, 1.5 x 1-8 AA ANSI	
DECIMALS .XX \pm -				150# RAISED FACE FLANGES	
.XXX \pm -		DRAWN BY		M. HIATT	
ANGLES \pm -		DATE		04/14/11	
SCALE 1/1		CHECKED BY		DRAWING NO.	
SHEET 1 OF 1		DATE		1.518AA	
		APPROVED BY		REV. A	