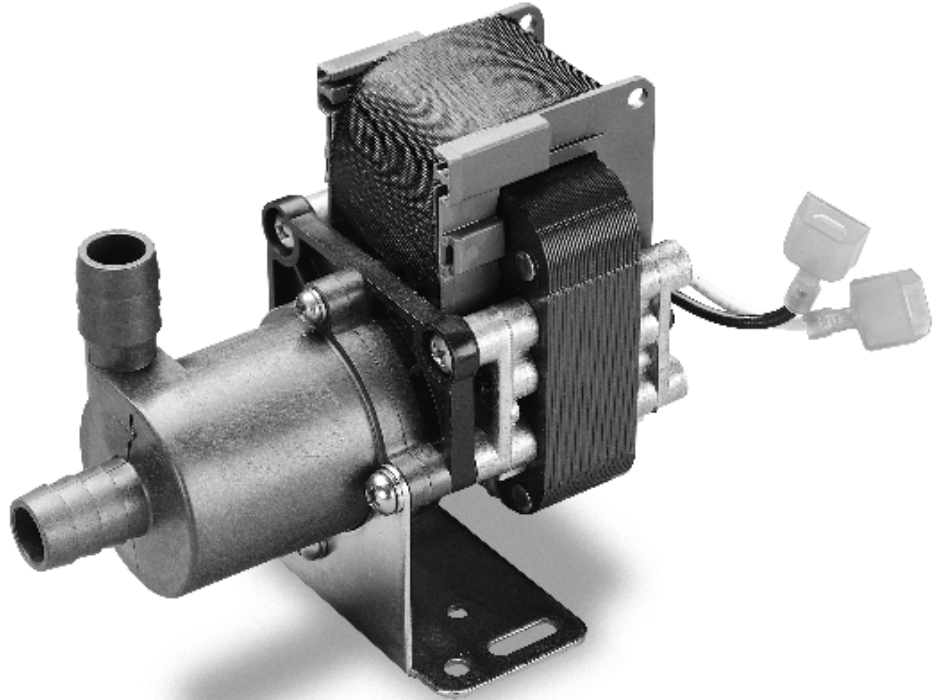


Magnetic Drive *Pumps*

Operation is similar to standard centrifugal pumps, except the impeller is driven with a magnetic coupling, eliminating the need for a shaft seal. Magnetic drive pumps must be used where flooded suction exists.

Typical applications include film processors; laser and x-ray cooling systems; medical, scientific and laboratory equipment and silver recovery equipment.



Features:

- Corrosion resistant
- Dry run capability
- Hydraulically efficient
- Quiet operation
- No shaft seals
- Flexible mounting and body discharge positions
- Low current draw and heat rise
- NSF certified models available



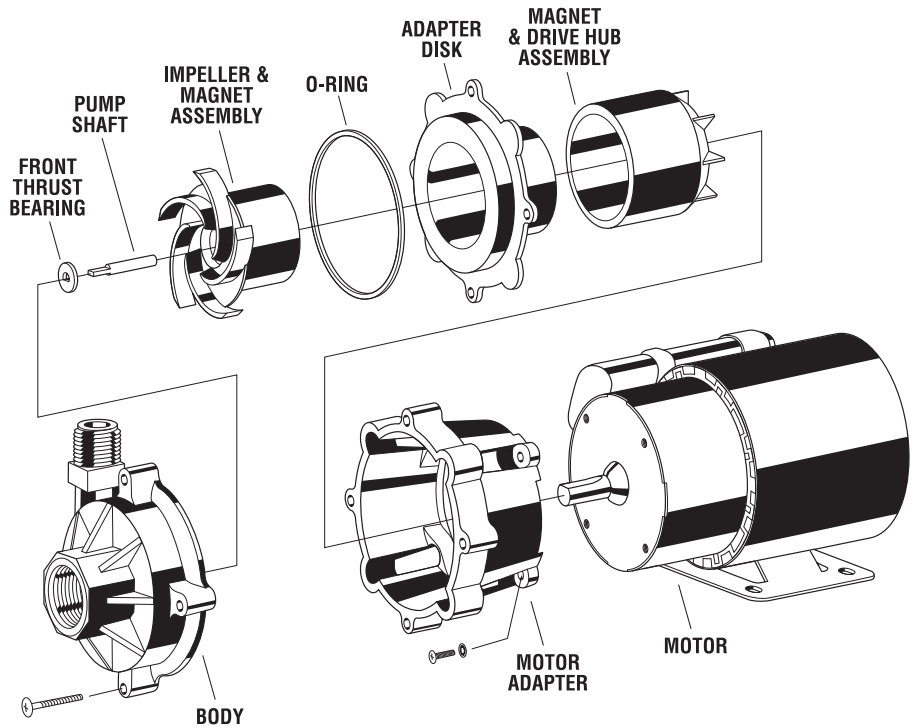
Magnetic Drive Pump Specifications:

Flow Rates — Range to 35 gpm; maximum discharge heads to 53 feet.

Motors — All motors, except the 15651 series and 18650 series motors which use sleeve bearings, have sealed electric motor grade ball bearings, are thermally protected, class B insulated, and continuous duty rated.

Most pumps available with AC or DC motors.

Fluid Temperature — To 203°F (95°C) (depending on model)



Materials in Contact with Solution:

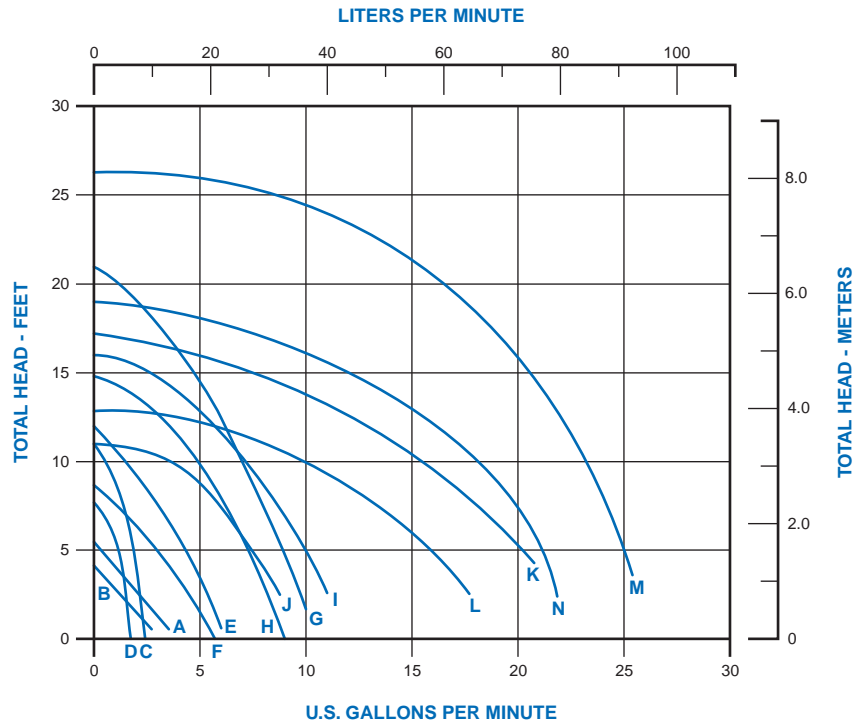
See individual pump series.

Selection Procedure:

Determine the flow and discharge head requirements for your system. The performance curves on this page provide the flow rates for each magnetic drive pump series. The performance curve characteristics of a pump model may not meet the exact requirements of your application. It may be necessary to throttle the discharge of a pump with more flow or head capacity to fine tune the performance.

For proper selection of the materials of construction (pump body, impeller, adapter disc, O-ring, impeller bearing and magnets) refer to the Chemical Resistance Section.

PERFORMANCE CURVES		
Series	Curve	
	50 Hz	60 Hz
15651	B	A
16650	D	C
17650	F	E
18650	H	G
14110	J	I
14518	L	K
14520	N	M
15700	—	not shown



Curves for fluids with a specific gravity of 1.0

The above performance curves are designed to serve as a reference guide for locating a pump with the approximate performance range to meet your application (please consult the factory with exact application specifications). Each individual pump series is identified in the chart for each corresponding curve.

Note: Dry run carbon bearings are not suggested for all photographic chemicals or for high oxidizing agents.