

Flowmeter

The flowmeters are positive displacement meters that provide highly accurate and repeatable results through magnetic sensing. The materials of construction provide excellent chemical compatibility. The oval gear geometry produces flowmeter rotation at extremely low differential pressures. The excellent repeatability of these oval gear flowmeters makes them ideally suited for transportation, medical, industrial and farm applications.



Features:

- Positive displacement
- Highly accurate
- Insensitive to viscosity
- Compact and durable
- Repeatability between 1% - 2%
- High resolution digital signal

Specifications:

Flow Rates — Range to 2.25 gpm; maximum pressure 125 psi

Fluid Temperature — To 180°F (82°C)

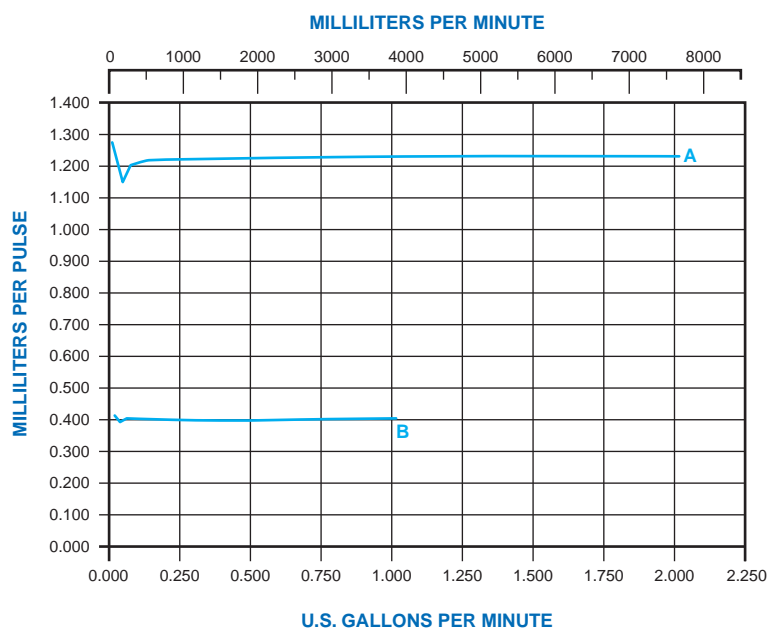
Materials in Contact with Solution:

Body — PPS Polymer (Ryton®)

Hose Connectors — PPS Polymer (Ryton®)

Gears (oval) — PPS Polymer (Ryton®)

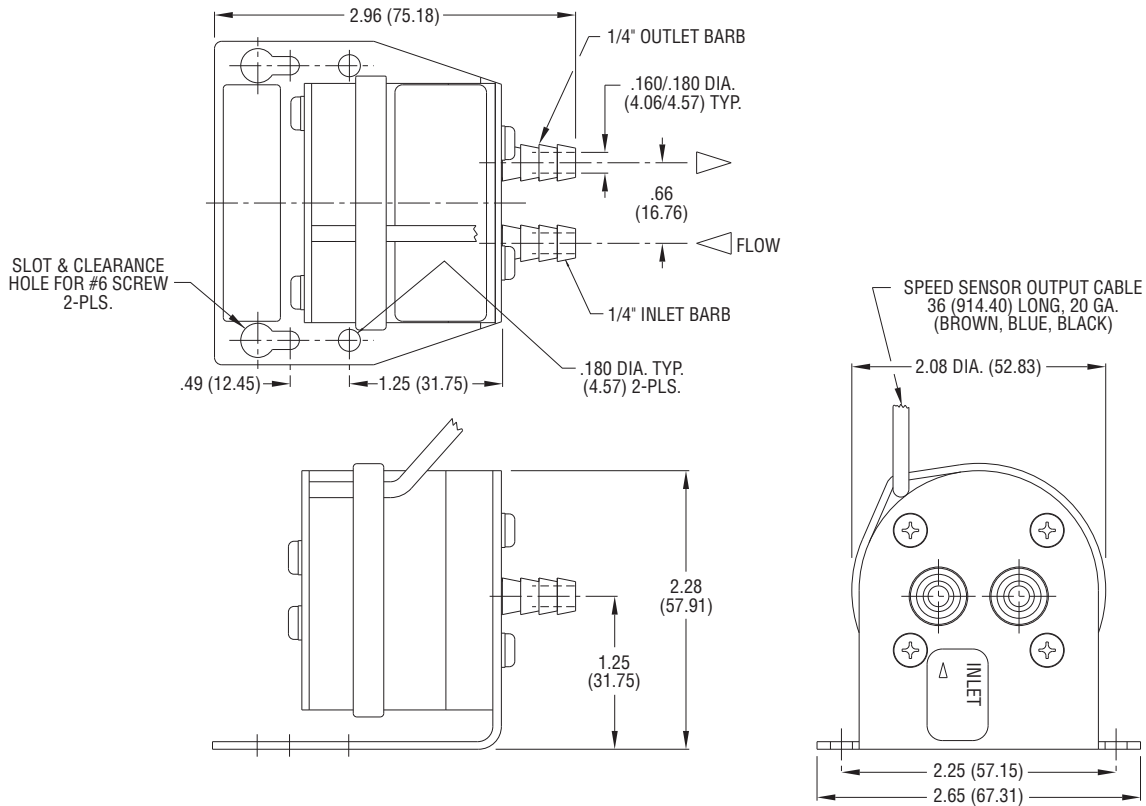
O-Rings (Elastomers) — Aflas®



MODEL SPECIFICATIONS				
Model Number	Nominal Pulse Rate	Hose Connectors	Typical Curve	Approx. Wt.
18002-001	.40 ml/pulse	¼" hose barb	A	.5 lbs.
18002-002	1.2 ml/pulse	⅜" hose barb	B	.5 lbs.

FLOWMETER - TYPICAL DIMENSIONS

18002 Series Model



Dimensions in Inches
(Dimensions in Millimeters)

Mesh Size Recommendation:

The 400-mesh screen is generally recommended for flowmeters as a way to ensure meter/system reliability, considering the close clearances required in the flowmeters.

The fluid flow rate and viscosity determine how much strainer area is needed. System design should always include testing with the inlet strainer partially blocked and with maximum fluid viscosity.

OEM Options

To meet the specifications of OEM applications, flowmeters can be supplied with a variety of inlet and outlet configurations. Please consult the sales department for further information on fluid connections and other available meter models.