

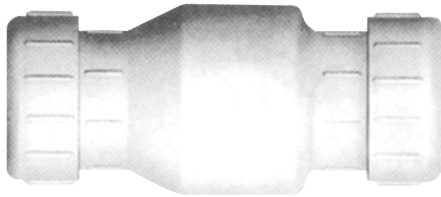


# CHECK VALVES / FITTINGS

CAST IRON / PLASTIC CHECK VALVES / SHORT RADIUS ELBOWS  
EFFLUENT AND SEWAGE

### PLASTIC CHECK VALVES

- Ideal for horizontal installation.
- Compression seal connection for easy installation.
- Swing design flapper prevents clogging.
- Available for pipe size 1¼", 1½", 2", 3".
- 200 PSI burst rating.
- PVC weighted and shielded flapper will retain back pressure up to 125 PSI.
- Pressure rated at 125 PSI at 72° F.
- NSF approved.



Pipe Size	Order No.	Overall Length	Overall Width
1¼"	A9-12P	8¼"	3 <sup>3</sup> / <sub>16</sub> "
1½"	A9-15P	8¼"	3 <sup>3</sup> / <sub>16</sub> "
2"	A9-2P	9 <sup>9</sup> / <sub>16</sub> "	4¼"
3"	A9-3P	13¼"	5¾"

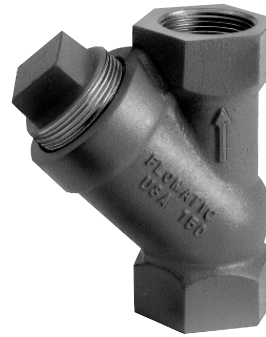
### RUBBER FLAPPER STYLE CHECK VALVE



Pipe Size	Order No.
2" NPT	A9-2PH

### BALL CHECK VALVES

- Ideal for vertical mounting.
- Heavy duty cast iron or plastic construction.
- Natural rubber ball.
- Clean-out port and plug.
- Available in 1¼", 1½", 2" and 3" NPT threaded connections.
- Also available in 4" flanged (125#).
- Recommended for flow velocity of 3' to 5' per second.
- Horizontal installation requires a 20' static head.



Plastic Models			
Pipe Size	Order No.	Maximum Pressure	Maximum Temperature
1¼" NPT	A9-12BPT	100 PSI	150° F
1½" NPT	A9-15BPT		
2" NPT	A9-2BPT		

Cast Iron Models			
Pipe Size	Order No.	Maximum Pressure	Maximum Temperature
1¼" NPT	A9-12B	150 PSI	180° F
1½" NPT	A9-15B		
2" NPT	A9-2B		
3" NPT	A9-3B		
4" Flanged	A9-4BCF ①		
4" Flanged	A9-4BCT ②		

① A9-4BCF - Nitrile covered metal ball, access (clean out) port.

② A9-4BCT - Phenolic ball, no access cover.

# FITTINGS

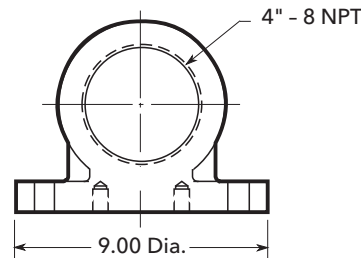
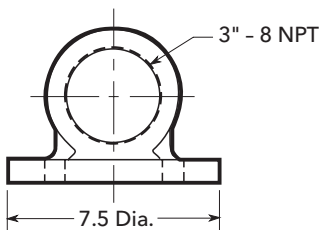
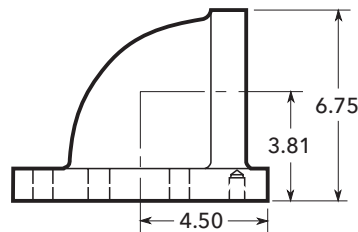
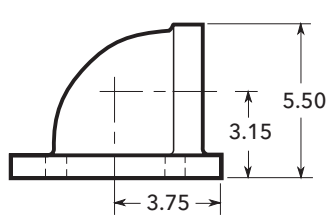
## PIPE CONNECTORS

### Short Radius Elbow

- Cast iron construction.
- 125 lb. ANSI rated flange at pump end.
- 3" NPT or 4" NPT threaded connection for discharge pipe.



Flange Size	Order Number	Used With
3"	A1-5	3", 125# ANSI Flange
4"	A1-6	4", 125# ANSI Flange



**A1-5**

**A1-6**



Xylem, Inc.  
 2881 East Bayard Street Ext., Suite A  
 Seneca Falls, NY 13148  
 Phone: (866) 325-4210  
 Fax: (888) 322-5877  
[www.xylem.com/brands/centripro](http://www.xylem.com/brands/centripro)

CentriPro is a trademark of Xylem Inc. or one of its subsidiaries.  
 © 2012 Xylem, Inc. BCPCV1 R8 October 2012