

# Models

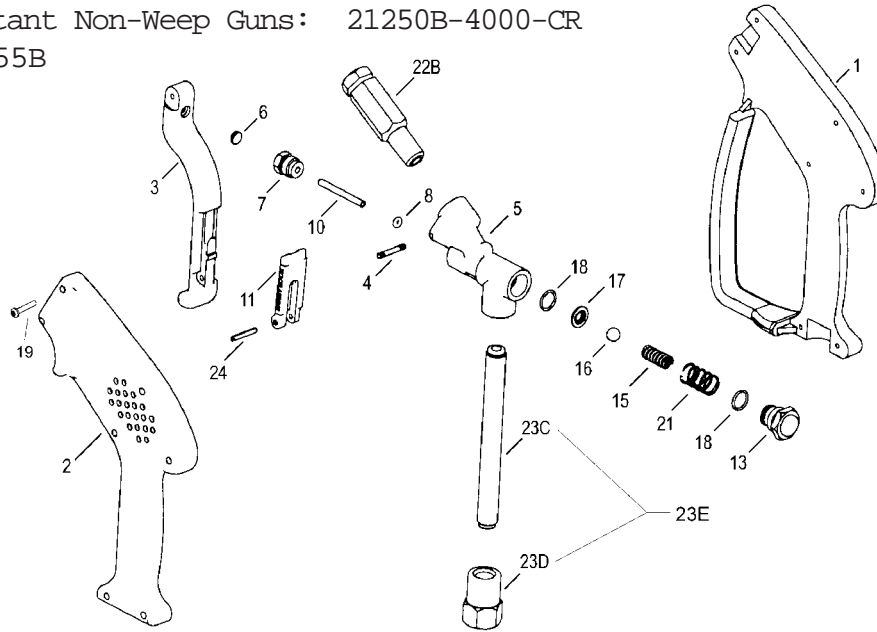
# Shut-Off Guns

## 21250B Series, 21255B, 21280B

Non-Weep Guns: 21250B / 21280B

Corrosion Resistant Non-Weep Guns: 21250B-4000-CR

Weep Guns: 21255B



Note: Guns manufactured prior to 11-92 use cap #21208. When replacing this cap you must replace with cap #21432 and valve body #21430.

ITEM #	PART #	DESCRIPTION	QTY
1	21271A	Housing, Right Half	1
2	21272A	Housing, Left Half	1
3	21273**	Trigger, 21250B, 21280	1
3	21012♦	Trigger, 21255B	1
4	21214	Pin	1
5	21430	Valve Body	1
6	21213**♦	Cam, Trigger	1
7	21211	Guide Sleeve	1
*8	21210	O-ring	1
*10	21209	Control Bolt	1
11	21274**	Lock, 21250B, 21280	1
11	21013♦	Lock, 21255B	1
13	21432	Cap	1
*15	21431	Valve Spring	1
*16	21205	Valve Ball, 21250B, 21255B	1
*16	21357	Valve Ball, 21250B - 4000 - CR	1
*16	21812	Valve Ball, 21280	1
*17	21218	Valve Seat, 21250B, 21280	1
*17	21237	Valve Seat, 21255B	1
*18	21217	O-ring	2
19	21254	Self Tapping Screw	7
*21	21251	Spring	1
22B	21256A	Discharge Tube/Fitting Assy.	1
23C	21331	Inlet Tube	1
23D	21244	Inlet Fitting	1
23E	21257+	Inlet Tube Assembly (21250B, 21255B, 21280B)	1
23E	21257-4000	Inlet Tube Assembly, 316 S.S. (21250B-4000 CR only)	1
24	21236**♦	Lock Pin	1

21250B Kit # 21227\* includes items #8, 10, 15-18, and 21  
 21255B Kit # 21240\* includes items #8, 10, 15-18, and 21  
 21280B Kit # 21289\* includes items #8, 10, 15-18, and 21  
 21250B-4000-CR Kit# 21227-CR\* includes items #8, 10, 15-18 and 21

\* You may order 23C & 23D as an assembly

\*\* Sold as an assembly - p/n 21001

♦ Sold as an assembly - p/n 21001B

### OPERATING CONDITIONS

Maximum Flow: 10 GPM  
 Maximum Pressure:  
 21250B, 21255B 5000 P.S.I.  
 Maximum Pressure:  
 21280B 1500 P.S.I.  
 Maximum Temperature: 300 °F  
 Inlet Port: 3/8" FNPT  
 Outlet Port: 1/4" FNPT

# INSTALLATION & OPERATING INSTRUCTIONS

## DISASSEMBLY OF THE 21200 SERIES

- 1) Remove the seven self tapping screws (item #19) that secure the two halves of the housing together. Remove housings (items #1 and #2).
- 2) Drive out hinge pin (item #4) and remove trigger (item #3).
- 3) Remove the cap (item #13), springs (items #21 and #15), and ball (item #16).
- 4) Remove the guide sleeve (item #7), control bolt (item #10) and o-ring (item #8). Replace o-ring.
- 5) With a small dowel rod, drive-out the seats (#5) & o-ring (#18) from the guide sleeve part. Replace with new seat & o-ring.
- 6) Assemble in reverse order.

WARNING: DO NOT USE ACID CONCENTRATES THROUGH GUN

WARNING: NEVER SECURE THE SHUT-OFF GUN IN AN OPEN POSITION (TRIGGER PULLED BACK) BY MEANS OTHER THAN THE OPERATOR'S HAND, ETC. BODILY HARM MAY OCCUR IF THE OPERATOR LOSES CONTROL OF THE SHUT-OFF GUN.

CAUTION: ALWAYS ENGAGE TRIGGER LOCKING MECHANISM (ITEM #11) WHEN NOT IN USE.



Giant Industries, Inc.

900 N. Westwood Ave., P.O. Box 3187, Toledo, Ohio 43607

419-531-4600 Fax: 419-531-6836

[www.giantpumps.com](http://www.giantpumps.com)

© Copyright 2007 Giant Industries, Inc.

4/07 21250B.PMD