

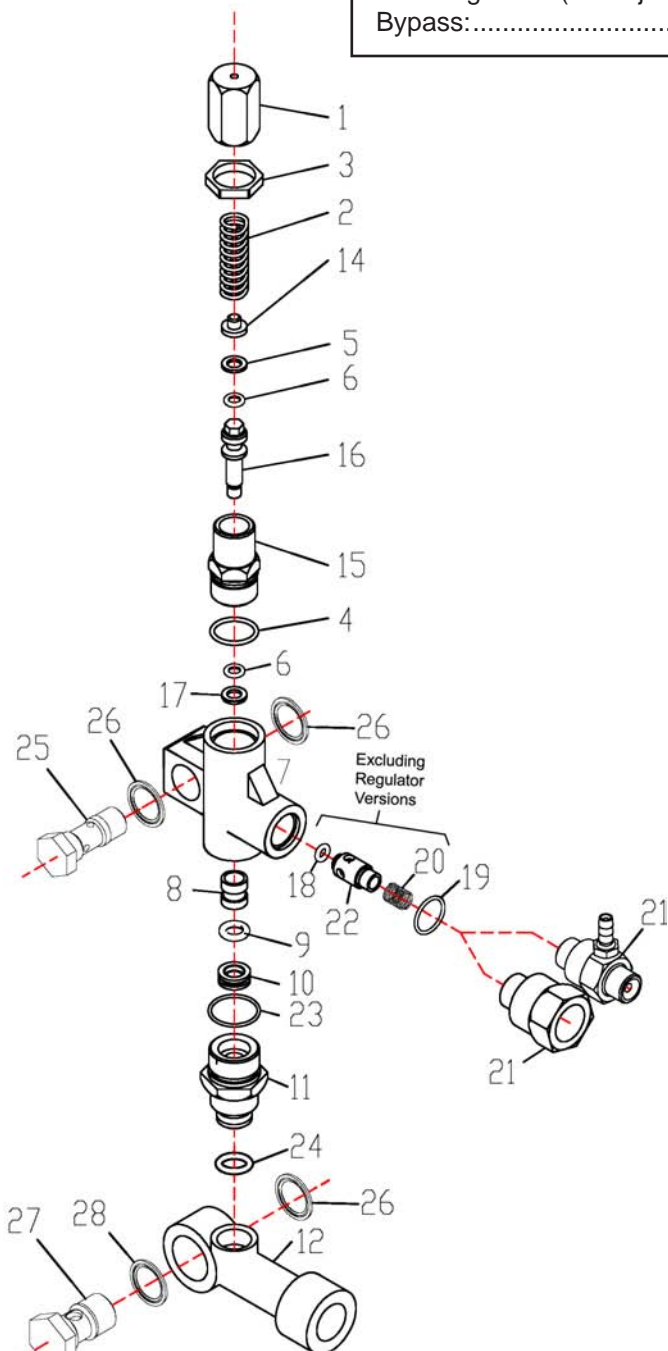
# Models

**23270 (R) Series - P200 Pumps**  
**23280 (R) Series - P300 Pumps**

**Direct Mount Pressure Actuated  
 Unloader/Regulator  
 with bypass connection**

**23270/23280 SERIES OPERATING CONDITIONS**

Max Flow: ..... 6.6 GPM..... 25 L/min  
 Pressure: ..... 0-4000 PSI .... 0-275 Bar  
 Maximum Temp.: ..... 194° F ..... 90 ° C  
 Weight: ..... 2.0 lbs. .... 0.91 Kg  
 Inlet Port: ..... 1/2" FNPT  
 Discharge Port (injector): ..... 3/8" MNPT  
 Discharge Port (w/o injector): ..... 3/8" FNPT  
 Bypass: ..... Internal



<u>Item#</u>	<u>Part#</u>	<u>Description</u>	<u>Qty.</u>
1	05137	Adjusting Spring Cap	1
2	08550	Pressure Spring	1
3	05134	Nut	1
4	07770**	O-Ring	1
5	08553**	Support Ring	1
6	07915**	O-Ring, Piston	2
7	05131	Unloader Body	1
8	08691*	Piston	1
9	22659**	O-Ring	1
10	08563*	Seat	1
11	05138	Bypass Fitting, 23270	1
11	05139	Bypass Fitting, 23280	1
12	05132	Inlet Tube, 23270	1
12	05133	Inlet Tube, 23280	1
14	08549	Spring Retainer	1
15	08558	Guide Plug	1
16	08555	Piston Rod	1
17	08559**	Support Ring	1
18	12326**	O-Ring	1
	(except Regulator versions)		
19	07913**	O-Ring	1
20	12328	Kick Back Valve Spring	1
	(except Regulator versions)		
21	12340	Kick back Valve Retainer	1
	(without chemical injectors)		
21	23750-X.X	Chemical Injector	1
	(see back for details)		
22	12325	Kick Back Valve Cone	1
	(except Regulator versions)		
23	08564**	O-Ring	1
24	08566	O-Ring	1
25	13443	Discharge Banjo Bolt	1
26	08548	Seal Ring	2
27	13447	Inlet Banjo Bolt, 23270	1
27	13442	Inlet Banjo Bolt, 23280	1
28	08541	Seal Ring	2
	*09321	Full Repair Kit	
		(4-6,8-10, 17-19 & 23)	
	+09322	Seal Repair Kit	
		(4-6, 9, 17-19 & 23)	

## ORDERING INFORMATION

### Models

23270 and 23280:  
23270R and 23280R:  
23270 and 23280-1.8  
23270R and 23280R-1.8  
23270 and 23280-2.1  
23270R and 23280R-2.1  
23270 and 23280-2.3  
23270R and 23280R-2.3  
23270 and 23280-1.8A  
23270R and 23280R-1.8A  
23270 and 23280-2.1A  
23270R and 23280R-2.1A  
23270 and 23280-2.3A  
23270R and 23280R-2.3A

### Description

Unloader with no injector  
Regulator with no injector  
Unloader with 1.8mm fixed chemical injector  
Regulator with 1.8mm fixed chemical injector  
Unloader with 2.1mm fixed chemical injector  
Regulator with 2.1mm fixed chemical injector  
Unloader with 2.3mm fixed chemical injector  
Regulator with 2.3mm fixed chemical injector  
Unloader with 1.8mm adjustable chemical injector  
Regulator with 1.8mm adjustable chemical injector  
Unloader with 2.1mm adjustable chemical injector  
Regulator with 2.1mm adjustable chemical injector  
Unloader with 2.3mm fixed chemical injector  
Regulator with 2.3mm fixed chemical injector

## **Installation and Operation Instructions**

- 1) The valve should be tension-free; therefore, loosen handwheel (3) as far as possible.
- 2) While the gun is open, turn the handwheel (3) in a clockwise motion until desired pressure is reached.

**Important! If the nozzle orifice is too small to allow all the fluid to run through the hole after the required operating pressure is reacted, on no account is the valve to be adjusted higher than the maximum operating pressure of the pump.**

### **Disassembly and Reassembly of the 23270/23280 Series Unloader/Regulator**

1. Remove Adjusting Spring Cap (1) and remove Pressure Spring (2) and Spring Retainer (14).
2. Pull Inlet Tube (12) off Bypass Fitting (11) and unscrew Bypass Fitting(11) from Unloader Body (7).
3. Insert a small screwdriver or allen wrench in the bottom of the Bypass Fitting (11) and push the Seat (10) out of the Bypass Fitting. NOTE: Use caution to prevent scratching or nicking the chamfered area of the Seat.
4. Insert a 9/32" deep-well socket onto the top of the Piston Rod (16) and a ½" deep-well socket on to the Piston (8). Remove the Piston from the Piston Rod.
5. Unscrew the Guide Plug (15) from the top of the Unloader Body (7). Push the Piston Rod (16) out of the Guide Plug.
6. Loosen the Kick Back Valve Retainer (21) or Siphon Injector (21) and remove the Kick Back Valve Cone (22) and Kick Back Valve Spring (20).
7. Inspect all o-rings and mating parts. Replace with parts from the kit.
8. Reassemble in reverse order.

**Note: Lightly grease all parts before reinstalling.**

**Giant Industries, Inc.**  
900 N. Westwood Ave., Toledo, Ohio 43607  
PHONE: 419-531-4600 FAX: 419-531-6836  
www.giantpumps.com © Copyright 2012 Giant Industries, Inc.

