

# INSTALLATION & OPERATING INSTRUCTIONS

It is recommended that the Accumulator be mounted pointing down as a safety precaution. This mounting procedure also allows the Accumulator to remain cooler during system operation and prolongs the effective operating life of the accumulator bladder.

**NOTE:** Shelf life of the nitrogen pre-charge of Accumulators is approximately six months before recharge is necessary.

Giant recommends the nitrogen pre-charge be checked approximately every three (3) months after Accumulator is installed in a pressure system.

**CAUTION:** Accumulator is to be pre-charged with nitrogen to one-half of the system operating pressure. Do not pre-charge beyond the rated operating pressure.

**WARNING:** Always fully discharge nitrogen pre-charge from bladder before attempting any repairs.

## REPAIR INSTRUCTIONS

- 1) Discharge nitrogen from bladder by pressing on the valve stem with a small rod or screwdriver. **Caution:** Never attempt to discharge using your finger or fingernail or contents will form a frost upon release.
- 2) Remove snap ring (item #4) using a standard snap ring pliers. To remove bladder and cap, insert a wood or brass rod through the inlet and tap sharply. **Note:** If bladder is removed, a new bladder must be installed for proper operation.
- 3) Carefully inspect inside surfaces of the body (item #1) for signs of wear. Worn surfaces will cause accelerated wear on the bladder and premature failure.
- 4) Clean all parts that are to be reused paying special attention to the outside surfaces of the cap (item #2). Be sure to remove all old sealant. Valve assembly (item #5) can be serviced now if necessary.
- 5) Coat inside diameter of the bladder using "PRO P-25 Professional Bead Sealer" or other similar sealant. Coat only the top 1" of the bladder.
- 6) Install cap/valve assembly in bladder. Coat inside diameter of bladder with oil or grease. Insert bladder/cap assembly into body as far as it will go by hand. Now with a large socket and a hammer or arbor press, install the assembly until the top of the cap clears the snap ring groove. Make sure assembly is not cocked.
- 7) Replace the snap ring so that the sharp edge of the ring is visible.
- 8) Charge bladder with nitrogen to 1/2 of the system operating pressure not to exceed 1500 PSI.
- 9) **Never** use any gas other than nitrogen to charge the bladder.



Giant Industries, Inc.  
900 N. Westwood Ave., P.O. Box 3187, Toledo, Ohio 43607  
419-531-4600 Fax: 419-531-6836  
www.giantpumps.com

© Copyright 2001 Giant Industries, Inc.

12/01 22050 PM6

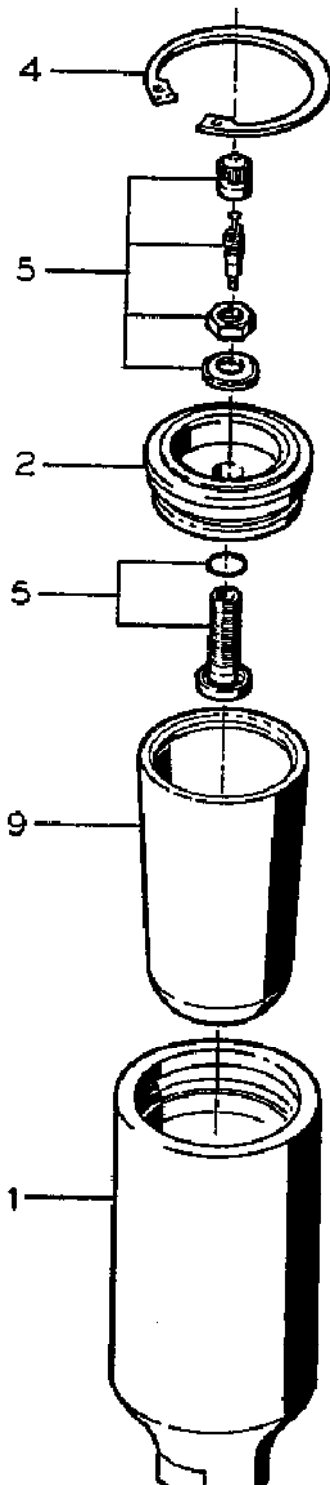
# Models

# Rebuildable Stainless Steel Accumulators

## 22050/22050-5100/22155/22155-5100

22050/22155 = 303 Stainless Steel

22050-5100/22155-5100 = 316 Stainless Steel



ITEM #	PART #	DESCRIPTION	QUANTITY
1	22051	Body (22050)	1
1	22051-5000	Body (22050-5100)	1
1	22154	Body (22155)	1
1	22154-5000	Body (22155-5100)	1
2	22052	Top, S.S. (22050/22155)	1
2	22052-0100	Top, S.S. (22050-5100/22155-5100)	1
4	22054	Snap Ring, S.S.	1
5	22036	Valve Assembly*	1
9	22028	Bladder (22050/22050-5100)	1
9	22029	Bladder (22155/22155-5100)	1

(Sold only as one unit and includes:  
valve, valve core, nut, valve cap  
o-ring and washer)

### OPERATING CONDITIONS

<b>Maximum Flow (22050/22050-5100):</b>	12 GPM
<b>Maximum Flow (22155/22155-5100):</b>	30 GPM
<b>Maximum Pressure:</b>	3000 P.S.I.
<b>Maximum Temperature:</b>	200 °F
<b>Maximum Pressure Precharge:</b>	1500 P.S.I. Max
<b>Connection (22050/22050-5100):</b>	3/8" FNPT
<b>Connection (22155/22155-5100):</b>	3/4" MNPT
<b>Weight:</b>	3.6 lbs.
<b>Capacity (22050/22050-5100):</b>	8 1/2 cu in.
<b>Capacity (22155/22155-5100):</b>	17 cu in.
<b>Burst Strength:</b>	10,000 P.S.I.

**NOTE:** Precharge pressure is always one-half operating pressure. Unless requested, all pulsation dampners will be charged to 800 PSI.

\* For re-charging, order refill valve (p/n 20000).