

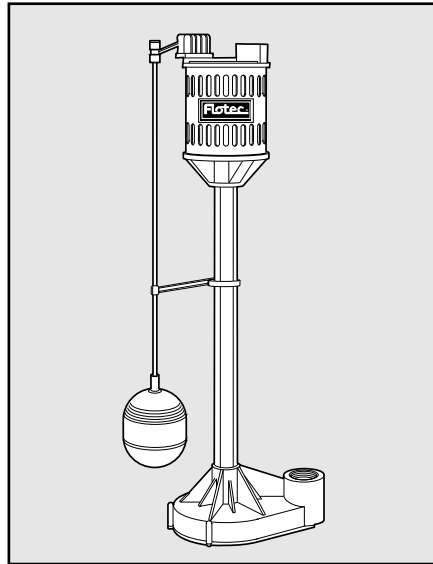


P.O. Box 342, Delavan, WI 53115
Phone: 1-800-365-6832
Fax: 1-800-526-3757
E-Mail: flotec@flotecpump.com
Web Site: http://www.flotecwater.com

OWNER'S MANUAL
Pedestal Sump Pump
Series PM3600, PSS3000

NOTICE D'UTILISATION
**Pompe d'assèchement
sur pied**
Série PM3600, PSS3000

MANUAL DEL USUARIO
**Bomba de Pie para
Sumideros**
Serie PM3600, PSS3000



Series PM3600 and PSS3000

**Water
is Our
Business™**

Installation/Operation/Parts

*For further operating,
installation, or maintenance
assistance:*

Call 1-800-365-6832

English Pages 2-6

Installation/Fonctionnement/Pièces

*Pour plus de renseignements
concernant l'utilisation,
l'installation ou l'entretien,*

Composer le 1 (800) 365-6832

Français Pages 7-11

Instalación/Operación/Piezas

*Para mayor información sobre
el funcionamiento, instalación o
mantenimiento de la bomba:*

Llame al 1-800-365-6832

EspañolPaginas 12-16

Thank you for purchasing a top quality, factory tested pump.

	Page
Warranty	2
General Information	3
Safety	3,4
Installation	4
Operation	4
Troubleshooting	5
Repair Parts	6

ATTACH ORIGINAL RECEIPT HERE FOR WARRANTY CONSIDERATION.

Flotec Limited Warranty

FLOTEC warrants to the original consumer purchaser ("Purchaser") of its products that they are free from defects in material or workmanship.

If within twelve (12) months from the date of the original consumer purchase any such product shall prove to be defective, it shall be repaired or replaced at FLOTEC's option, subject to the terms and conditions set forth below. Your dated proof of purchase will be used to determine warranty eligibility.

Exceptions to the Twelve (12) Month Warranty

Ninety (90) Day Warranty:

If within ninety (90) days from original consumer purchase any Drill Pump, Pitcher Pump, or In-Line Water Filter Cartridge shall prove to be defective, it shall be replaced, subject to the terms set forth below.

Two (2) Year Warranty:

If within two (2) years from original consumer purchase any 1/3 HP Submersible Sump Pump shall prove to be defective, it shall be repaired or replaced at FLOTEC's option, subject to the terms and conditions set forth below.

Three (3) Year Warranty:

If within three (3) years from original consumer purchase any 4" Submersible Well Pump, or 1/2 HP Submersible Sump Pump, shall prove to be defective, it shall be repaired or replaced at FLOTEC's option, subject to the terms and conditions set forth below.

Four (4) Year Warranty:

If within four (4) years from original consumer purchase any Floodmate 6000™ Submersible Sump Pump shall prove to be defective, it shall be repaired or replaced at FLOTEC's option, subject to the terms and conditions set forth below.

Five (5) Year Warranty:

If within five (5) years from original consumer purchase any Pre-Charge water system tank shall prove to be defective, it shall be repaired or replaced at FLOTEC's option, subject to the terms and conditions set forth below.

General Terms and Conditions

Purchaser must pay all labor and shipping charges necessary to replace product covered by this warranty. This warranty shall not apply to acts of God, nor shall it apply to products which, in the sole judgement of FLOTEC, have been subject to negligence, abuse, accident, misapplication, tampering, alteration; nor due to improper installation, operation, maintenance or storage; nor to other than normal application, use or service, including but not limited to, operational failures caused by corrosion, rust or other foreign materials in the system, or operation at pressures in excess of recommended maximums.

Requests for service under this warranty shall be made by returning the defective product to the Retail outlet or to FLOTEC as soon as possible after the discovery of any alleged defect. FLOTEC will subsequently take corrective action as promptly as reasonably possible. No requests for service under this warranty will be accepted if received more than 30 days after the term of the warranty.

This warranty sets forth FLOTEC's sole obligation and purchaser's exclusive remedy for defective products. FLOTEC SHALL NOT BE LIABLE FOR ANY CONSEQUENTIAL, INCIDENTAL, OR CONTINGENT DAMAGES WHATSOEVER.

THE FOREGOING WARRANTIES ARE EXCLUSIVE AND IN LIEU OF ALL OTHER EXPRESS WARRANTIES. IMPLIED WARRANTIES, INCLUDING BUT NOT LIMITED TO THE IMPLIED WARRANTIES OF MERCHANTABILITY AND FITNESS FOR A PARTICULAR PURPOSE, SHALL NOT EXTEND BEYOND THE DURATION OF THE APPLICABLE EXPRESS WARRANTIES PROVIDED HEREIN.

Some states do not allow the exclusion or limitation of incidental or consequential damages or limitations on how long an implied warranty lasts, so the above limitations or exclusions may not apply to you. This warranty gives you specific legal rights and you may also have other rights which vary from state to state.

FLOTEC • P.O. Box 342 • Delavan, WI U.S.A. 53115

Phone: 1-800-365-6832 • Fax: 1-800-526-3757

E-Mail: flotec@flotecpump.com • Web Site: <http://www.flotecwater.com>

For parts or assistance, call Flotec Customer Service at 1-800-365-6832

DESCRIPTION

This Pedestal Sump Pump is designed for home sumps. Unit is equipped with a 3-prong grounding-type power cord. Sleeve bearings on motor shaft never need lubrication. Automatic reset thermal protection.

SPECIFICATIONS

Power supply required115V, 60 HZ.
 Horsepower1/3
 Motor dutyIntermittent
 Liquid Temp. Range32°F to 70°F(0°-21°C)
 Circuit Requirement GFCI Class A.....15 Amps
 Motor full load (maximum)3.0 Amps
 Discharge: Plastic Models.....1-1/4" FNPT
 Cast Iron Models.....1-1/4" FNPT
 Cast Iron -01 Models1-1/2" FNPT

PERFORMANCE

GPH (LPH) AT TOTAL FEET (M)			
5 Ft. (1.52)	10 Ft. (3.05)	15 Ft. (4.57)	20 Ft. (6.09)
3000 (11 355L)	2460 (9 312L)	1620 (6 131L)	0 (0L)

GENERAL SAFETY

Electrically powered sump pumps normally give many years of trouble-free service when correctly installed, maintained, and used. However, unusual circumstances (interruption of power to the pump, dirt/debris in the sump, flooding that exceeds the pump's capacity, electrical or mechanical failure in the pump, etc.) may prevent your pump from functioning normally. To prevent possible water damage due to flooding, consult your retailer about a secondary AC sump pump, a DC backup sump pump, and/or a high water alarm. See the "Troubleshooting Chart" in this manual for information about common sump pump problems and remedies. For more information, see your retailer or call Flotec customer service at 1-800-365-6832.

1. Know the pump application, limitations, and potential hazards.

▲ WARNING Do not use in explosive atmospheres. Pump water only with this pump. Failure to follow this warning can result in personal injury and/or property damage.

2. Disconnect power before servicing.
3. Release all pressure within system before servicing any component.
4. Drain all water from system before servicing.

▲ CAUTION Risk of flooding. If a flexible discharge hose is used, pump

may move when motor starts. If it moves far enough so that switch hits side of sump, switch may stick and prevent pump from starting. Make sure pump is secured so it cannot move around in sump.

5. Secure discharge line before starting pump. An unsecured discharge line will whip, possibly causing personal injury and/or property damage.
6. Check hoses for weak or worn condition before each use, making certain all connections are secure.

7. Inspect sump, pump and system components monthly. Keep free of debris and foreign objects. Perform routine maintenance as required.

▲ WARNING FIRE HAZARD - Do not store or rest objects on or near motor or switch linkage. Keep all flammable objects or liquids away from motor.

8. Provide means of pressure relief for pumps whose discharge line can be shut-off or obstructed.
9. Personal Safety:
 - a. Wear safety glasses at all times when working with pumps.
 - b. Keep work area clean, uncluttered and properly lighted – replace all unused tools and equipment.
 - c. Keep visitors at a safe distance from work area.
 - d. Make workshop child-proof – with padlocks, master switches, and by removing starter keys.
10. When wiring an electrically driven pump, follow all electrical and safety codes, as well as most recent National Electrical Code (NEC) and Occupational Safety and Health Act (OSHA).
11. This equipment is only for use on 115 volt (single phase) and is equipped with an approved 3-conductor cord and 3-prong, grounding-type plug.

▲ WARNING To reduce risk of electric shock, be certain that it is connected to properly grounded, grounding-type receptacle.

▲ CAUTION Never connect green (or green and yellow) wire in cord to a live terminal!

Where a 2-prong wall receptacle is encountered, it must be replaced with properly grounded 3-prong receptacle installed in accordance with the National Electrical Code and local codes and ordinances.

12. All wiring should be performed by a qualified electrician.
13. Make certain that power source conforms to requirements of your equipment.
14. Protect electrical cord from sharp objects, hot surfaces, oil, and chemicals. Avoid kinking cord. Replace or repair damaged or worn cords immediately.
15. Do not touch an operating motor. Modern motors are designed to operate at high temperatures.
16. Do not handle pump or pump motor with wet hands or when standing on wet or damp surface, or in water.

▲ WARNING If your basement has water or moisture on floor, do not walk on wet area until all power has been turned off. If shut-off box is in basement, call electric company to shut-off service to house, or call local fire department for instructions. Remove pump and repair or replace. Failure to follow this warning can result in fatal electrical shock.

▲ CAUTION Do not use in hazardous or explosive locations.

For parts or assistance, call Flotec Customer Service at 1-800-365-6832

INSTALLATION

1. This unit can be installed in sump pit with minimum diameter of 12"(30cm) and depth of 12" (30cm). Sump pit may be constructed of tile, concrete, steel or plastic. Check local codes for approved materials.

2. Install pump on solid, level foundation, as near as possible to center of sump pit. Do not hang pump from discharge pipe or power cord.

▲ CAUTION Pump must be level (column must be vertical) when operating. If motor is tilted, internal start/run switch may overheat and damage motor.

3. Pump should not be installed on clay, earth or sand surfaces. Clean sump pit of small stones and gravel which could clog the pump. Keep pump inlet screen clear.
4. Thread discharge pipe into pump body carefully to avoid stripping or crossing threads.
NOTICE: Do not use ordinary pipe joint compound on plastic pipe or pump. Pipe joint compound can attack plastics and damage pump.
5. To reduce motor noise and vibrations, a short length of rubber hose (1-5/8"(41mm) I.D., e.g. radiator hose) can be connected into discharge line near pump using suitable clamps.

▲ WARNING Risk of electric shock. Pump is designed for 115V., 60 HZ operation and requires a circuit of 15 amperes capacity. It is supplied with a 3-wire cord set with grounding-type plug for use in a 3-wire, grounded outlet. Do not cut off the round grounding prong. For safety, outlet must always be electrically grounded to a suitable electrical ground such as a grounded water pipe or a properly grounded metallic raceway or ground wire system.

6. Locate Float Rod Guide (Key No. 6) about 6" (16cm) below motor. Clamp guide to column with screw provided.

▲ WARNING Risk of flooding. Be sure that guide is securely clamped so that float rod is vertical and can move up and down freely. If float is angled or binds, pump may not start, allowing flooding to occur.

7. Screw float onto threaded end of rod. Threads on rod will cut threads into corrosion resistant float.
8. Insert plain end of float rod up through eye of rod guide.
9. Slide one rod stop on float rod before passing rod through eye of pump switch. Slide 2nd rod stop on rod after passing through eye of switch. Position 2nd rod stop flush with top of rod.
10. Position lower rod stop to within 8"(20cm) of switch lever arm. With lower rod stop in this position, pump will automatically cycle at approximately 2-1/2"(6cm) off and 10-12"(25-30cm) on. For faster cycling, move lower rod stop closer to switch lever arm.
11. If pump discharge line is exposed to outside subfreezing atmosphere, then portion of line exposed must be installed so any water remaining in pipe will drain to outfall by gravity. Failure to do this can cause water trapped in discharge to freeze which could result in damage to pump.

12. Install an in-line check valve (Flotec No. FP0026-6D) to prevent flow backwards through pump after pump shuts off.

NOTICE: Flotec check valves are equipped with an air bleed hole to prevent airlocking the pump. If using a check valve that is not a Flotec valve, drill a 1/8" (3.2mm) hole in discharge pipe just above pump body but below the check valve to prevent air locks.

13. After all piping and controls have been installed, unit is ready for operation.
14. Run pump through one cycle to check float switch operation.

▲ WARNING The pump motor is equipped with automatic resetting thermal protector and may restart unexpectedly. Protector tripping is an indication of motor overloading as a result of operating pump at low heads (low discharge restriction), excessively high or low voltage, inadequate wiring, incorrect motor connections, or a defective motor.

OPERATION

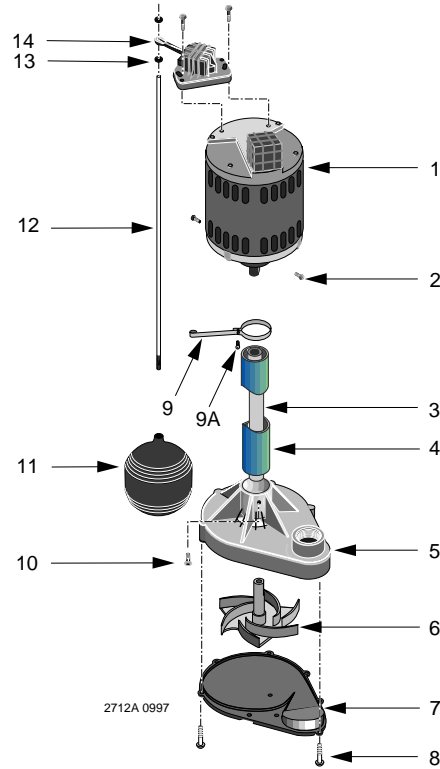
▲ WARNING Do not touch sump pump, pump motor, water, or discharge piping when pump is connected to electrical power. Always disconnect pump cord (power) before handling.

1. Plug unit into 115 V. outlet. It is strongly recommended that this unit be plugged into a Class A 15 Amp GFCI (Ground Fault Circuit Interrupter). Consult your local electrician for information and availability.
 2. Fill sump pit with water, pump will start automatically when lower rod stop actuates switch lever arm. When upper rod stop actuates switch lever arm, pump will stop.
NOTICE: Do not allow pump to run dry.
- ▲ CAUTION** Before attempting to service, always disconnect power from unit.
3. The motor is equipped with an automatic reset thermal protector to protect unit from overheating. When motor has cooled sufficiently, switch will reset automatically and restart motor. Repeated tripping could be caused by low voltage, long extension cords, clogged impeller, very low head or lift, etc. Cycling of protector will cause eventual motor burnout.

⚠ CAUTION Unplug pump from power receptacle before working on pump.

SYMPTOM	POSSIBLE CAUSE(S)	CORRECTIVE ACTION
Motor will not start or run	No electrical power Low line voltage Faulty automatic switch Float or float rod stuck Waterlogged float Motor overload tripped Electrical malfunction	Check fuse, circuit breaker, power cord and electrical outlet. If voltage wiring under recommended minimum, check size of wiring from main source. If OK, contact Electric Company or local Hydro authority. Operate switch manually and replace if inoperative. Check to see float is not rubbing sump wall or float rod rubbing or stuck against sump cover. Replace float if filled with water. If pump has been running and stops before sump is emptied, automatic overload may have tripped. Check inlet screen to be sure impeller is not jammed. If so, free impeller of obstruction. Check power cord, automatic switch and motor. Replace faulty parts as needed.
Motor runs but pump will not pump	Inlet clogged Discharge line plugged Low line voltage Pump airlocked Broken impeller or shaft	Check inlet and clean if needed. Clear discharge line and check valve for obstruction. Refer to Corrective Action on low line voltage in above section. Drill a 1/8" (3.2mm) hole in discharge pipe just above pump body but below the check valve. Replace impeller or shaft as needed.
Pump starts and stops too often	Improper positioning of float rod stop Faulty automatic switch	Lower float rod stop. Replace automatic switch.
Pump is noisy	Improper installation Noisy motor	Refer to No. 5 in Installation Instructions. Replace pump.
Pump will not stop running	Debris around float or float rod stuck Faulty automatic switch Motor defective	Remove debris from sump. Check to see float is not rubbing sump wall or float rod rubbing or stuck against sump cover. Replace switch. Replace pump.

For parts or assistance, call Flotec Customer Service at 1-800-365-6832



Models PM3600-00 and PSS3000-00

Key No.	Part Description	No. Used	Model	
			FPPM3600D-01	FPPSS3000-01
1	Motor with Cord and Switch†	1	–	–
2	Screw (motor)	2	U30-932ZP	U30-932ZP
3	Shaft (not shown)	1	RP0005257	RP0005257
4	Support Column	1	RP0005246A	S15-37SS
5	Volute (Pump Body)*	1	PS1-25P	S101-31E
6	Impeller (not shown)	1	PS5-21P	PS5-21P
7	Base Plate	1	PS4-17P	PS4-17P
8	Screw (base plate)	8	U30-934ZP	U30-571BT
9	Float Rod Guide	1	RP0005249	RP0005249
9A	Screw	1	U30-929ZP	U30-929ZP
10	Screw (column to volute)	1	SC004-116	U30-946PH
11	Float	1	FT0013-63	FT0013-63
12	Float Rod	1	RP005168S	RP005168S
13	Float Stop	2	RP0005248	RP0005248
14	Automatic Switch (float actuated)	1	FP00018-7D	FP00018-7D

* FPPSS3000 model uses S101-31.

† If motor fails, replace entire pump.

For parts or assistance, call Flotec Customer Service at 1-800-365-6832