



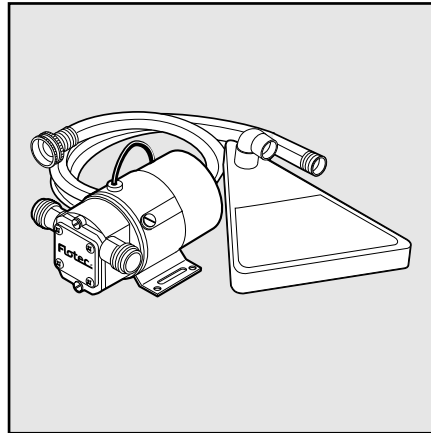
P.O. Box 342, Delavan, WI 53115
 Phone: 1-800-365-6832
 Fax: 1-800-526-3757
 E-Mail: info@flotecwater.com
 Web Site: http://www.flotecwater.com

Water
 is Our
 Business®

OWNER'S MANUAL
Cyclone Pumping System

NOTICE D'UTILISATION
Système de pompe Cyclone

MANUAL DEL USUARIO
Sistema de bombeo Cyclone



Model FP0F360AC

Installation/Operation/Parts

*For further operating,
 installation, or maintenance
 assistance:*

Call 1-800-365-6832

English Pages 2-6

Installation/Fonctionnement/Pièces

*Pour plus de renseignements
 concernant l'utilisation,
 l'installation ou l'entretien,*

Composer le 1 (800) 365-6832

Français Pages 7-11

Instalación/Operación/Piezas

*Para mayor información sobre
 el funcionamiento, instalación o
 mantenimiento de la bomba:*

Llame al 1-800-365-6832

EspañolPaginas 12-16

SAFETY INFORMATION

Use this pump only on a 115 volt circuit. Pump is equipped with an approved 3-conductor cord and 3-prong, grounding-type plug. To reduce the risk of electric shock, connect it to a properly grounded, grounding-type receptacle.

If circuit has a 2-prong receptacle, replace it with a properly grounded 3-prong receptacle installed in accordance with the National Electrical Code and local codes and ordinances.

Any extension cord used must be outdoor grade, gauge 16 AWG or heavier, and not more than 25' long.

WARNING Risk of fire or explosion if used to pump flammable liquids or if used in explosive atmospheres. Pump water

only with this pump. Pump is designed to pump water at temperatures between 32°-77° F (0°-25° C) only.

WARNING Risk of electrical shock. Do not allow the motor to get wet!

CAUTION Risk of burns. During normal operation, motor case may heat enough to burn you. Do not touch motor when it is hot.

Do not operate the pump continuously at a discharge pressure of more than 12 psi (83 kPa) or discharge lift of more than 28' (8.5 M), as the motor will exceed the normal safe operating temperature and may heat to 180° - 190° F (82° C - 88° C).

NOTICE: This unit is not designed for applications involving salt water or brine! Use with salt water or brine will void warranty.

ATTACH ORIGINAL RECEIPT HERE FOR WARRANTY CONSIDERATION.

Flotec Limited Warranty

FLOTEC warrants to the original consumer purchaser ("Purchaser") of its products that they are free from defects in material or workmanship.

If within twelve (12) months from the date of the original consumer purchase any such product shall prove to be defective, it shall be repaired or replaced at FLOTEC's option, subject to the terms and conditions set forth below. Your original receipt of purchase is required to determine warranty eligibility.

Exceptions to the Twelve (12) Month Warranty

Ninety (90) Day Warranty:

If within ninety (90) days from original consumer purchase any Cyclone Pumping System, Drill Pump, Pitcher Pump, or In-Line Water Filter Cartridge shall prove to be defective, it shall be replaced, subject to the terms set forth below.

Two (2) Year Warranty:

If within two (2) years from original consumer purchase any 1/3 HP Submersible Sump Pump or Model FP2800DCC shall prove to be defective, it shall be repaired or replaced at FLOTEC's option, subject to the terms and conditions set forth below.

Three (3) Year Warranty:

If within three (3) years from original consumer purchase any 4" Submersible Well Pump, or 1/2 HP Submersible Sump Pump, shall prove to be defective, it shall be repaired or replaced at FLOTEC's option, subject to the terms and conditions set forth below.

Five (5) Year Warranty:

If within five (5) years from original consumer purchase any Pre-Charge water system tank shall prove to be defective, it shall be repaired or replaced at FLOTEC's option, subject to the terms and conditions set forth below.

General Terms and Conditions

Purchaser must pay all labor and shipping charges necessary to replace product covered by this warranty. This warranty shall not apply to acts of God, nor shall it apply to products which, in the sole judgement of FLOTEC, have been subject to negligence, abuse, accident, misapplication, tampering, alteration; nor due to improper installation, operation, maintenance or storage; nor to other than normal application, use or service, including but not limited to, operational failures caused by corrosion, rust or other foreign materials in the system, or operation at pressures in excess of recommended maximums.

Requests for service under this warranty shall be made by returning the defective product to the Retail outlet or to FLOTEC as soon as possible after the discovery of any alleged defect. FLOTEC will subsequently take corrective action as promptly as reasonably possible. No requests for service under this warranty will be accepted if received more than 30 days after the term of the warranty.

This warranty sets forth FLOTEC's sole obligation and purchaser's exclusive remedy for defective products.

FLOTEC SHALL NOT BE LIABLE FOR ANY CONSEQUENTIAL, INCIDENTAL, OR CONTINGENT DAMAGES WHATSOEVER.

THE FOREGOING WARRANTIES ARE EXCLUSIVE AND IN LIEU OF ALL OTHER EXPRESS WARRANTIES. IMPLIED WARRANTIES, INCLUDING BUT NOT LIMITED TO THE IMPLIED WARRANTIES OF MERCHANTABILITY AND FITNESS FOR A PARTICULAR PURPOSE, SHALL NOT EXTEND BEYOND THE DURATION OF THE APPLICABLE EXPRESS WARRANTIES PROVIDED HEREIN.

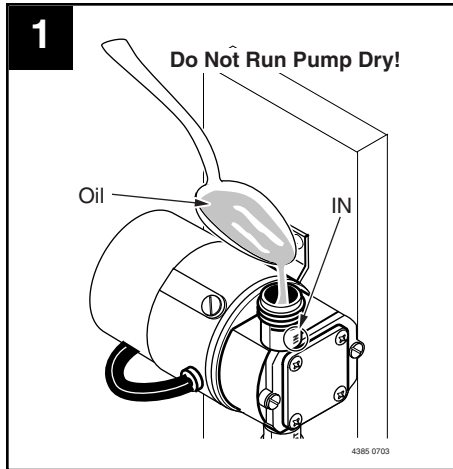
Some states do not allow the exclusion or limitation of incidental or consequential damages or limitations on how long an implied warranty lasts, so the above limitations or exclusions may not apply to you. This warranty gives you specific legal rights and you may also have other rights which vary from state to state.

FLOTEC • P.O. Box 342 • Delavan, WI U.S.A. 53115

Phone: 1-800-365-6832 • Fax: 1-800-526-3757

E-Mail: info@flotecwater.com • Web Site: <http://www.flotecwater.com>

For parts or assistance, call Flotec Customer Service at 1-800-365-6832



OIL THE PUMP

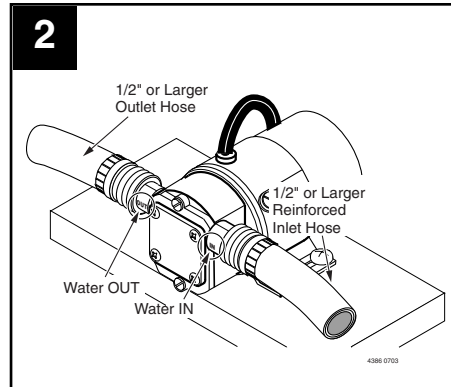
Oil the pump with 1/2 tablespoon food grade mineral or vegetable oil with each use. Pour the oil in the 'IN' port. Three 1/2 tablespoon oil packets are included.

NOTICE: The pump depends on the liquid being pumped for lubrication.

DO NOT RUN THE PUMP DRY!

If the pump does not start to move water in 30 seconds or less, recheck the installation and plumbing.

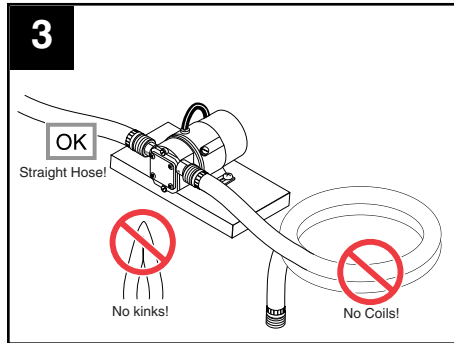
Mount the pump solidly on a stable platform.



USE 1/2" HOSE (OR LARGER)

Use a reinforced hose on the inlet. The pump should be less than 10' above and less than 25' to one side of the water source. Make the outlet hose as short as possible – 25' or less.

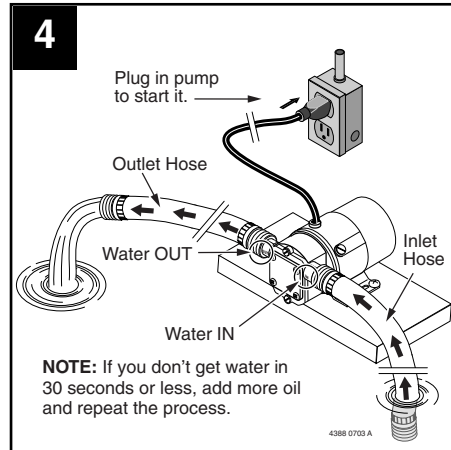
Check the washer in the inlet fitting to make sure it is airtight. If this joint leaks air, the pump will not operate.



KEEP THE HOSES AS STRAIGHT AS POSSIBLE

To reduce friction, do not coil or kink the hoses. When pumping from a well or stream, raise the inlet hose a few inches off the bottom to avoid sucking in sand, silt or pebbles (which can disable the impeller). Install a strainer or the Pud-L-Scoop™ to protect the pump from large solids .

NOTICE: Attach the Pud-L-Scoop™ to the end of the inlet line and place it in at least 1/2" of water at the lowest point to be pumped. Be sure all connections are air tight.



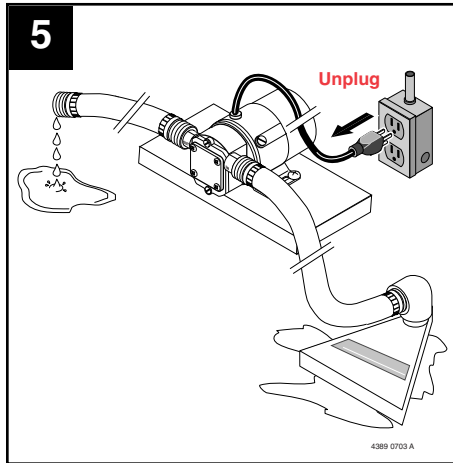
INLET HOSE GOES IN THE WATER; OUTLET HOSE STAYS OUT OF THE WATER. MOTOR MUST STAY DRY

Make sure all inlet connections are tight (no air leaks) and the inlet hose is in the water. Make sure the end of the outlet hose is **not** under water. If the outlet is under water, the pump may not work.

Plug the cord into a 3-wire, 115 volt, 60 Hz, grounded A.C. outlet.

You should get water in 30 seconds or less. If not, add more oil and repeat the process. If your pump does not prime on the second try, check the impeller and the inside of the pump head for wear. Replace as needed.

The motor must have air circulation around it for proper cooling. This pump will lift water 12'; trying to lift water more than 12' can cause the motor to run hot. The motor has a thermal overload which will stop it if it gets too hot. If the motor stops, allow it to cool for 30 minutes before trying to start it again.



UNPLUG THE PUMP

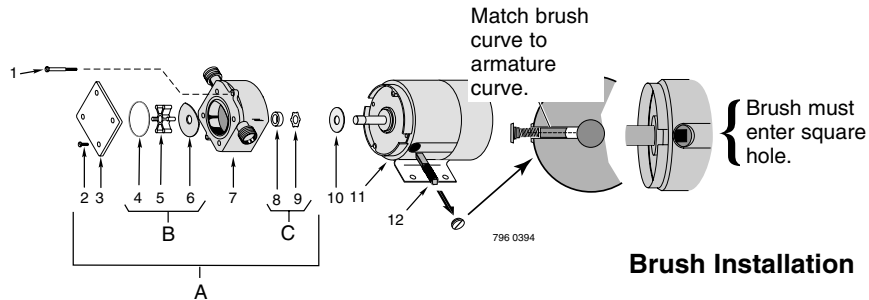
Unplug the pump before all the water is completely gone.

DO NOT RUN PUMP DRY!

PERFORMANCE

The pump will deliver 330 gallons/1249 liters per hour with an unrestricted discharge line. If the discharge line is restricted and the pressure on the pump outlet port increases, it will pump less water.

NOTICE: This pump's motor has brushes. Inspect the brushes frequently; replace them if they're worn.



**MODEL FPOF360AC-08
REPAIR PARTS**

Key No.	Part Description	Qty.
1	10-32x1-3/4 Phil. Hd Screw*	2
2	#8x5/8 Phil. Hd Screw	4
3	End Cover / Wear Plate	1
4	O-Ring	1
5	Impeller	1
6	Wear Plate – Ellipse	1
7	Pump Body	1
8	U Cup Seal	1
9	Retainer	1
10	Slinger	1
11	Motor**	1
12	Motor Brush and Spring Set	2

* Standard hardware item; purchase locally.

** If motor fails, replace entire pump.

Pump Head Assembly No. RP4940-21
includes Key Nos. 2 through 9 (Bracket A).

Impeller Only No. 416-010 Key No. 5.

Service Kit No. FP003414S
includes Key Nos. 4 through 6 (Bracket B) and 8 and 9 (Bracket C).

Brush Kit No. FP003415S
includes a pair of replaceable brushes, springs, and caps, Key No. 11.

Pud-L-Scoop® No. FP000349A
includes the Pud-L-Scoop®, and a 6' garden hose with washer.

Slinger Only No. RP0001616 Key No. 10.

For parts or assistance, call Flotec Customer Service at 1-800-365-6832