



68 Frame Block-Style Stainless Steel Plunger Pump

**Standard
Models**

6831

**Flushed
Models**

6831K

FEATURES

Superior Design

- Triplex plunger design gives smoother fluid flow.
- Inlet and discharge valve assemblies interchange for easier maintenance.
- Oil bath crankcase assures optimum lubrication.
- Close tolerance concentricity of the ceramic plunger maximizes seal life.
- **Standard Models:** Lo-Pressure Seals and V-Packings are completely lubricated and cooled by the fluid being pumped.

Flushed Models: Special ported inlet manifold permits fluid to cool or flush between V-Packings and Lo-Pressure Seals providing protection against high temperatures or contaminating pumped fluids.

Quality Materials

- All 316 stainless steel valves are heat treated and seats are roller burnished for a positive seal and extended valve life.
- Block-Style 316 Stainless Steel manifolds for strength and corrosion resistance.
- Special concentric, high density, polished, graphite impregnated, solid ceramic plungers are abrasion resistant and result in extended seal life.
- Specially formulated, CAT PUMP exclusive, V-Packing offer unmatched performance and seal life.
- Die cast aluminum crankcase provides high strength, minimum weight and precision tolerance control.
- Optional Cast Iron crankcase for hazardous environments.
- Chrome-moly crankshaft gives unmatched strength and surface hardness.
- Oversized crankshaft bearings mean longer bearing life.

Easy Maintenance

- Wet-end is easily serviced without entering crankcase, requiring less time and effort.
- Valve assemblies are accessible without disturbing piping, for quick service.
- Preset packings mean no packing gland adjustment is necessary, reducing maintenance costs.

SPECIFICATIONS

	U.S. Measure	Metric Measure
Max. Volume	40 GPM	(152 L/M)
Max. Discharge Pressure	100 to 2300 PSI	(7 to 160 BAR)
Max. Inlet Pressure Range	Flooded to 50 PSI	(Flooded to 3.5 BAR)
Max. RPM.....	625 RPM	(625 RPM)
Bore.....	1.575"	(40 mm)
Stroke.....	2.579"	(65.5 mm)
Crankcase Capacity.....	10 Qts.	(9.46 L)
Max. Fluid Temperature.....	140°F	(60°C)
Inlet Ports [2].....	1-1/2" NPT	(1-1/2" NPT)
Discharge Ports [2]	1" NPT	(1" NPT)
Shaft Diameter	1.772"	(45 mm)
Weight.....	355 lbs.	(161 kg)
Dimensions	29.5" x 24.33" x 16.9"	(750 x 618 x 430 mm)

HORSEPOWER REQUIREMENTS

FLOW		PRESSURE				RPM
		PSI 1000	PSI 1500	PSI 2000	PSI 2300	
U.S. GPM	L/M	BAR 70	BAR 105	BAR 140	BAR 160	
40	152	27.4	41.2	54.9	63.1	625
30	114	20.6	30.9	41.2	47.4	470
25	95	17.2	25.7	34.3	39.5	391
20	76	13.7	24.7	27.5	31.6	331

See complete Drive Packages [Incls: Pulleys, Belts, Hubs, Key] Tech Bulletin 03.

DETERMINING THE PUMP R.P.M.	$\frac{\text{Rated G.P.M.}}{\text{Rated R.P.M.}}$	=	$\frac{\text{"Desired" G.P.M.}}{\text{"Desired" R.P.M.}}$
DETERMINING THE REQUIRED H.P.	$\frac{\text{GPM x PSI}}{1460}$	=	Electric Brake H. P. Required
DETERMINING MOTOR PULLEY SIZE	$\frac{\text{Motor Pulley O.D.}}{\text{Pump R.P.M.}}$	=	$\frac{\text{Pump Pulley O.D.}}{\text{Motor R.P.M.}}$

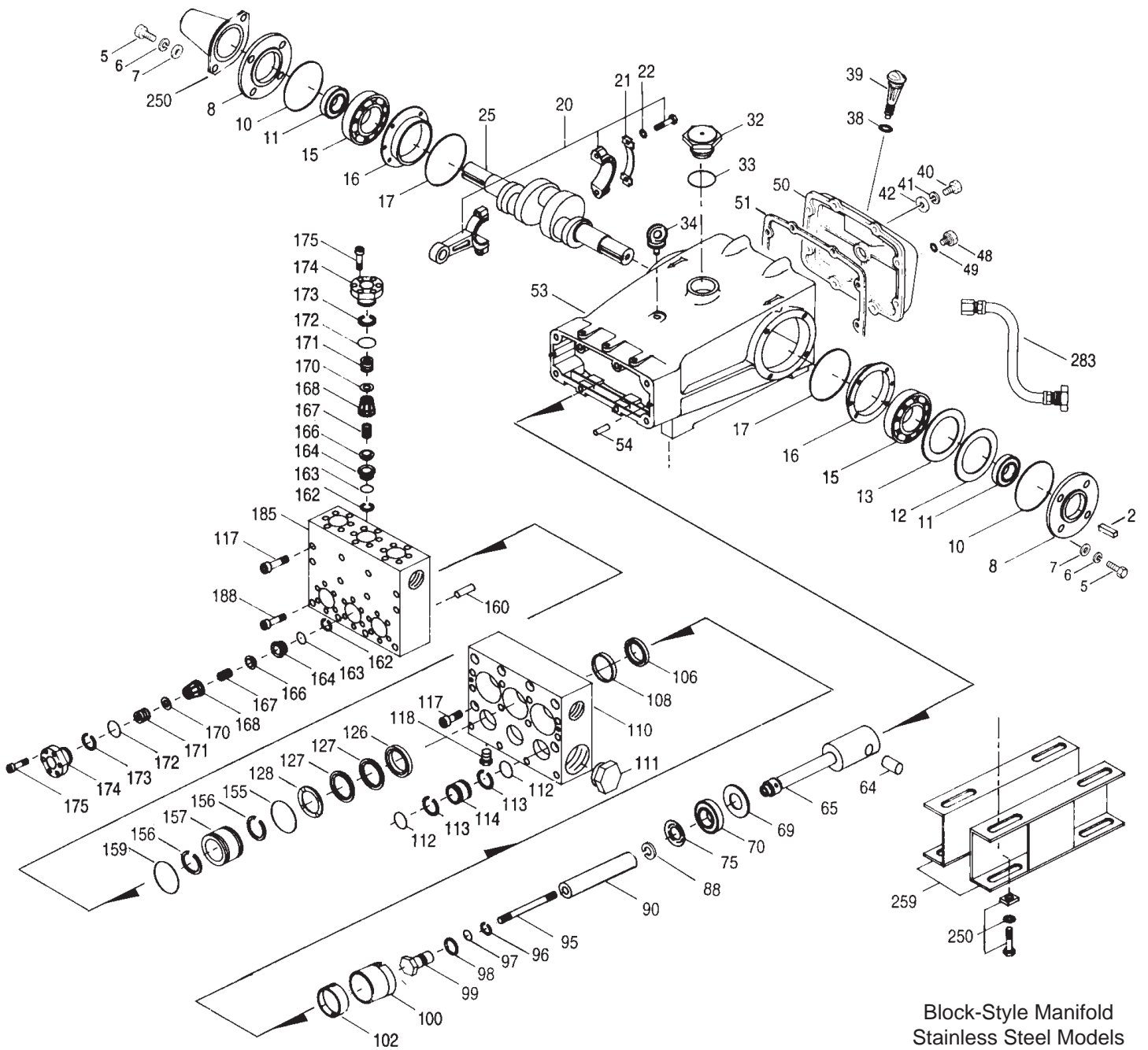
Note: Consult engine manufacturer when using gas or diesel engine.
Refer to pump Service Manual for important Inlet Condition Check-List, Start-up Procedure, Tech Bulletins and Pump Maintenance information.

"Customer confidence is our greatest asset"

PARTS LIST

ITEM	PART NUMBER				DESCRIPTION	QTY
	6831	MATL	6831K	MATL		
● 2	43048	STL	43048	STL	Key (M14x9x90)	1 ●
5	89728	SS	89728	SS	Screw, HH (M10x40)	8
6	15847	S	15847	S	Lockwasher, Split (M10)	8
7	19934	S	19934	S	Washer, Flat (M10)	8
8	29443	AL	29443	AL	Cover Bearing, Outer	2
10	29444	NBR	29444	NBR	O-Ring, Cover Bearing	2
11	11443	NBR	11443	NBR	Seal, Oil, Crankshaft	2
12	43642	S	43642	S	Washer, Shim, Bearing, Inner (M120x0.3)	2
13	43643	S	43643	S	Washer, Shim, Bearing, Inner (M120x0.5)	2
15	29441	STL	29441	STL	Bearing, Roller	2
16	29442	AL	29442	AL	Cover Bearing, Inner	2
17	29444	NBR	29444	NBR	O-Ring, Cover Bearing	2
20	46681	HS	46681	HS	Rod, Connecting Assembly	3
21	44941	STZP	44941	STZP	Washer, Locking	3
22	43641	STL	43641	STL	Washer, Shim Connecting Rod (M10.5x1.5)	6
25	29440	FCM	29440	FCM	Crankshaft, Dual Shaft	1
32	43211		43211		Cap, Oil Filler	1
33	14177	NBR	14177	NBR	O-Ring, Filler Cap	1
34	29726	STZP	29726	STZP	Bolt, Eye	1
38	11338	NBR	11338	NBR	O-Ring, Dip Stick	1
39	27769	BB	27769	BB	Stick, Dip	1
40	89627	SS	89627	SS	Screw, HH (M10x30)	8
41	15847	S	15847	S	Lockwasher, Split (M10)	8
42	19934	SS	19934	SS	Washer, Flat (M10)	8
48	25625	BBCP	25625	BBCP	Plug, Drain (1/4"x11)	1
49	23170	NBR	23170	NBR	O-Ring, Drain Plug	1
50	29438	AL	29438	AL	Cover, Crankcase	1
51	29439	NBR	29439	NBR	Gasket, Crankcase Cover	1
● 53	43284	AL	43284	AL	Crankcase w/Guide Pins	1 ●
54	43282	S	43282	S	Pin, Guide	2
64	29481	S	29481	S	Pin, Rist	3
65	701581	SSZZ	701581	SSZZ	Rod, Plunger Assembly	3
69	29453	STZP	29453	STZP	Washer, Oil Seal	3
70	29454	NBR	29454	NBR	Seal, Oil, Crankcase	3
75	43865	S	43865	S	Slinger, Barrier	3
88	45676	S	45676	S	Washer, Keyhole (M16)	3
90	43921	CC	43921	CC	Plunger	3
95	89778	SS	89778	SS	Stud, Plunger Retainer (M14x147) (M10x122)	3
96	20189	PTFE	20189	PTFE	Back-up-Ring, Plunger Retainer	3
97	11345	NBR	11345	NBR	O-Ring, Plunger Retainer	3
	11375	FPM	11375	FPM	O-Ring, Plunger Retainer	3
98	44085	SS	44085	SS	Gasket, Plunger Retainer	3
99	44084	SS	44084	SS	Retainer, Plunger	3
100	701455	BB	701455	BB	Retainer, Seal, Rear	3
102	44119	PVDF	44119	PVDF	Retainer, Seal, Adapter, Front	3
106	44113	NBR	44113	NBR	LPS, w/SS-Spg	3
	44740	FPM	44740	FPM	LPS, w/SS-Spg	3
108	45381	SS	45381	SS	Spacer, LPS	3
● 110	701321	SSL	—	—	Manifold Inlet, Block-Style	1 ●
●	—	—	701322	SSL	Manifold Inlet, Block-Style, Flushed	1 ●
111	701116	SS	701116	SS	Plug, Inlet Manifold (1-1/2" NPT)	1
112	701632	NBR	701632	NBR	O-Ring, Spacer	6
	701328	FPM	701328	FPM	O-Ring, Spacer	6
113	701329	PTFE	701329	PTFE	Back-up-Ring, Spacer	6
114	701327	SS	701327	SS	Spacer, Inlet	3
117	89694	S	89694	S	Screw, HSH (M16x110)	8
118	701077	SS	701077	SS	Plug (1/4" NPT)	3
126	45367	SS	45367	SS	Adapter, Female	3
127	44609	PTFE	44609	PTFE	V-Packing	6
	44741	FPM	44741	FPM	V-Packing	6
128	45368	SS	45368	SS	Adapter, Male	3
155	18697	NBR	18697	NBR	O-Ring, Spacer, Inner	3
	20137	FPM	20137	FPM	O-Ring, Spacer, Inner	3
156	48362	D	48362	D	Back-up-Ring, Spacer, Inner	3
157	45369	SS	45369	SS	Spacer, V-Packing	3
159	18697	NBR	18697	NBR	O-Ring, Spacer, Outer	3
	20137	FPM	20137	FPM	O-Ring, Spacer, Outer	3
160	44756	SS	44756	SS	Pin, Guide (I.M., D.M.)	2
162	48363	D	48363	D	Back-up-Ring, Valve Seat	12/6
163	26142	NBR	26142	NBR	O-Ring, Seat	12/6
	14330	FPM	14330	FPM	O-Ring, Seat	12/6
164	44612	SS	44612	SS	Seat	6
166	44108	SS	44108	SS	Valve	6
167	44109	SS	44109	SS	Spring	6
168	44728	PVDF	44728	PVDF	Retainer, Spring	6
170	44729	SS	44729	SS	Washer, Retainer	6
171	44644	SS	44644	SS	Spring, Coil, Retainer	6
172	89827	NBR	89827	NBR	O-Ring, Valve Plug	6
	11747	FPM	11747	FPM	O-Ring, Valve Plug	6
173	48364	D	48364	D	Back-up-Ring, Valve Plug	6
174	701432	SS	701432	SS	Plug, Valve	6
175	87951	SS	87951	SS	Screw, HSH (M10x30)	36
● 185	701431	SSL	701431	SSL	Manifold, Discharge, Block-Style	1 ●
188	701279	SS	701279	SS	Screw, HSH (M12x100), Lower	4

EXPLODED VIEW



Block-Style Manifold
Stainless Steel Models
6831, 6831K
March 1998

● 250	29445	AL	29445	AL	Protector, Shaft	1	●
● 255	33243		33243		Kit, Mount (Included w/Pump)	2	●
● 259	29477	STZP	29477	STZP	Rail Box (Included w/Pump)	2	●
● 275	990014		990014		Hub, "B", M45, (Keyway M14x9x90) [See Complete Drive Package, Tech Bulletin 03]	1	●
● 283	34334		34334		Kit, Oil Drain	1	●
● 290	6108		6108		Liquid Gasket	1	●
● 299	910003	SSL			Complete Head, Block-Style	1	●
●			910004	SSL	Complete Head, Block-Style, Flushed	1	●
● 300	701647	NBR	701647	NBR	Kit, Seal (Incls: 97,106,112,113,127,155,156,159)	1	●
● 310	33708	FPM	33708	FPM	Kit, Seal (Incls: 97,106,112,113,127,155,156,159)	1	●
●	34017	NBR	34017	NBR	Kit, Valve (Incls: 162,163,164,166,167,170,172,173)	2	●
●	31255	FPM	31255	FPM	Kit, Valve (Incls: 162,163,164,166,167,170,172,173)	2	●
● 370			990663		Assembly, Flushing	1	●
● 390					C.A.T. (Captive Acceleration Tube)	1	●
● 391					Adapter (2 per C.A.T.) (See Data Sheet for complete selection)	2	●

● Industrial discount. **Bold print part numbers are unique to a particular pump model.** *Italics are optional items.*

Pressurized Inlet and C.A.T. highly recommended for Hi-Temp, R.O. and industrial applications.

See Tech Bulletin 03, 24, 36, 74 and 77 for additional information.

MATERIAL CODES (Not Part of Part Number): AL=Aluminum BB=Brass BBCCP=Brass/Chrome Plated CC=Ceramic D=Delryn FCM=Forged Chrome-moly
FPM=Fluorocarbon (Viton®) HS=High Strength NBR=Medium Nitrile (Buna-N) PTFE=Polytetrafluoroethylene (Teflon®) PVDF=Fluoroplastic (High Strength)
S=304SS SS=316SS SSL=316SS/Low Carbon SSSZ=316SS/Zamak STL=Steel STZP=Steel/Zinc Plated

