

Models 6760, and 6767 Shown

FEATURES

Superior Design

- Triplex plunger design provides smoother liquid flow.
- Special ported inlet manifold permits an external flush liquid providing cooling for hi-temp liquids and lubrication for low lubricity liquids.
- V-Packings are completely lubricated and cooled by the liquid being pumped.
- Inlet and discharge valve assemblies interchange for easier maintenance.
- Oil bath crankcase assures optimum lubrication.
- Close tolerance concentricity of the ceramic plunger maximizes seal life.

Quality Materials

- Precision design 316 stainless steel valves and seats are hardened and polished for ultimate seating and extended valve life.
- Brass, cast Nickel Aluminum Bronze, 316 Stainless Steel or Duplex SS manifolds for strength and corrosion resistance.
- Special concentric, high-density, polished, solid ceramic plungers provide a true wear surface and extend seal life.
- Specially formulated, CAT PUMP exclusive, V-Packings offer unmatched performance and seal life.
- Die cast aluminum crankcase provides high strength, minimum weight and precision tolerance control.
- Chrome-moly crankshaft gives unmatched strength and surface hardness.
- Oversized crankshaft bearings with greater loading capacity mean longer bearing life.

Easy Maintenance

- Wet-end is easily serviced without entering crankcase, requiring less time and effort.
- Valve assemblies are accessible without disturbing piping, for quick service.
- Preset packings mean no packing gland adjustment is necessary, reducing maintenance costs.

⚠ WARNING

All systems require both a primary pressure regulating device (i.e., regulator, unloader) and a secondary pressure safety relief device (i.e., pop-off valve, safety valve). Failure to install such relief devices could result in personal injury or damage to the pump or to system components. CAT PUMPS does not assume any liability or responsibility for the operation of a customer's high pressure system.

60 Frame Plunger Pumps

Standard Brass Model

6760

Stainless Steel Model

6761

Duplex SS Model

6762

Nickel Aluminum Bronze Model

6767

NAB Flushed Model

6767C

SPECIFICATIONS

| | U.S. Measure | Metric Measure |
|------------------------------|-------------------|----------------------|
| Flow..... | 60 GPM | (227 L/M) |
| Pressure Range..... | 100 to 1200 PSI | (7 to 85 BAR) |
| Inlet Pressure Range..... | Flooded to 50 PSI | (Flooded to 3.5 BAR) |
| RPM | 520 RPM | (520 RPM) |
| Bore..... | 2.165" | (55 mm) |
| Stroke..... | 2.579" | (65.5 mm) |
| Crankcase Capacity..... | 10 Qts. | (9.46 L) |
| Max. Liquid Temperature..... | 140°F | (60°C) |

Above 130°F call CAT PUMPS for inlet conditions and elastomer recommendations.

| | | |
|----------------------------------|-------------|---------------|
| Inlet Ports (2) | 2" NPTF | (2" NPTF) |
| Flushing Ports (2) (6767C) | 1/4" NPTF | (1/4" NPTF) |
| Discharge Ports (2)..... | 1-1/4" NPTF | (1-1/4" NPTF) |
| Shaft Diameter | 1.772" | (45 mm) |
| Weight..... | 335 lbs. | (151.95 kg) |

Dimensions

| | | |
|------------------------|------------------------|----------------------|
| 6760, 6767, 6767C..... | 31.14 x 24.37 x 12.87" | (791 x 619 x 327 mm) |
| 6761, 6762..... | 30.71 x 24.37 x 12.44" | (780 x 619 x 316 mm) |

ELECTRIC HORSEPOWER REQUIREMENTS

| FLOW | | PRESSURE | | | | RPM |
|----------|-----|----------|----------|----------|----------|-----|
| U.S. GPM | L/M | PSI 900 | PSI 1000 | PSI 1200 | PSI 2000 | |
| | | BAR 60 | BAR 70 | BAR 85 | BAR 140 | |
| 60 | 227 | 37.1 | 41.2 | 49.4 | N/A | 520 |
| 50 | 189 | 30.9 | 34.3 | 41.2 | N/A | 433 |

DETERMINING THE PUMP R.P.M. $\frac{\text{Rated G.P.M.}}{\text{Rated R.P.M.}}$ = $\frac{\text{"Desired" G.P.M.}}{\text{"Desired" R.P.M.}}$

DETERMINING THE REQUIRED H.P. $\frac{\text{GPM} \times \text{PSI}}{1460}$ = Electric Brake H. P. Required

DETERMINING MOTOR PULLEY SIZE $\frac{\text{Motor Pulley O.D.}}{\text{Pump R.P.M.}}$ = $\frac{\text{Pump Pulley O.D.}}{\text{Motor R.P.M.}}$

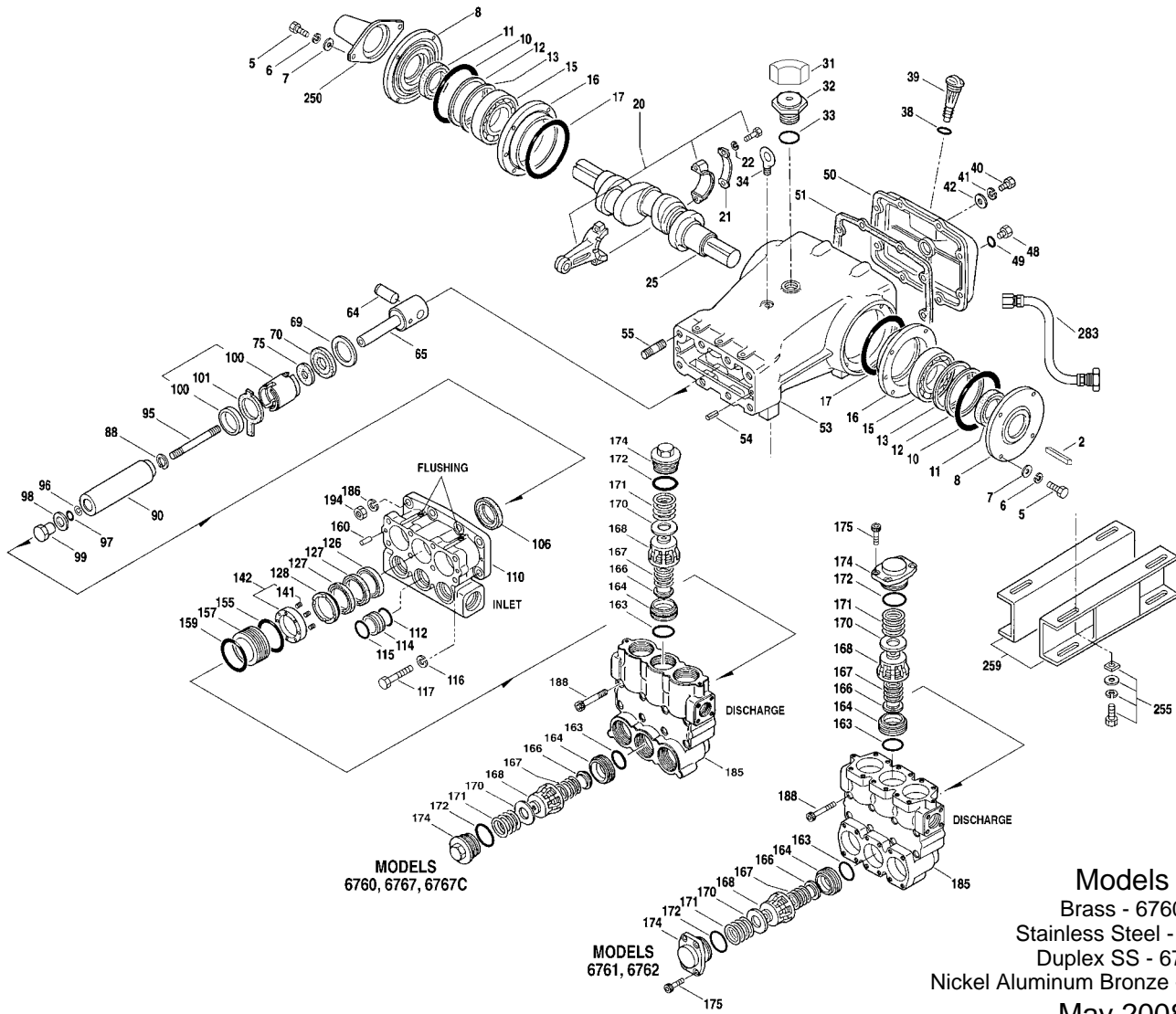
See complete Drive Packages [Incls: Pulleys, Belts, Hubs, Key] Tech Bulletin 003.
Refer to pump **Service Manual** for repair procedure, additional technical information and **pump warranty**.

"Customer confidence is our greatest asset"

PARTS LIST

| ITEM | PART NUMBER | | | | DESCRIPTION | QTY |
|------|---------------|---------------|---------------|---------------|---|-----|
| | 6760 MATL | 6761 MATL | 6762 MATL | 6767 MATL | | |
| 2 | 43048 STL | 43048 STL | 43048 STL | 43048 STL | Key (M14x9x90) | 1 |
| 5 | 126532 STCP R | 89728 S | 89728 S | 89728 S | Screw, HH (M10 x 40) | 8 |
| 6 | 12503 STZP | 15847 S | 15847 S | 15847 S | Lockwasher (M10) | 8 |
| 7 | 126231 STCP R | — | — | — | Lockwasher (M10) | 8 |
| 8 | 126574 STCP R | 19934 S | 19934 S | 19934 S | Washer, Flat (M10) | 8 |
| 8 | 29443 AL | 29443 AL | 29443 AL | 29443 AL | Cover, Bearing, Outer | 2 |
| 10 | 29444 NBR | 29444 NBR | 29444 NBR | 29444 NBR | O-Ring, Bearing Cover - 70D | 2 |
| 11 | 11443 NBR | 11443 NBR | 11443 NBR | 11443 NBR | Seal, Oil, Crankshaft - 70D | 2 |
| 12 | 43642 S | 43642 S | 43642 S | 43642 S | Washer, Shim (M120 x 0.3) | 0-2 |
| | 126594 STCP R | 126594 STCP R | 126594 STCP R | 126594 STCP R | Washer, Shim (M120 x 0.3) | 0-2 |
| 13 | 126595 STCP R | 126595 STCP R | 126595 STCP R | 126595 STCP R | Washer, Shim (M120 x 0.5) | 0-2 |
| 15 | 29441 STL | 29441 STL | 29441 STL | 29441 STL | Bearing, Roller | 2 |
| 16 | 29442 STL | 29442 STL | 29442 STL | 29442 STL | Cover, Bearing, Inner | 2 |
| 17 | 29444 NBR | 29444 NBR | 29444 NBR | 29444 NBR | O-Ring, Bearing Cover - 70D | 2 |
| 20 | 126612 BBHS | 126612 BBHS | 126612 BBHS | 126612 BBHS | Rod, Connecting (Incls: 21, 22) | 3 |
| 21 | 126560 STCP R | 126560 STCP R | 126560 STCP R | 126560 STCP R | Washer, Locking | 3 |
| 22 | 126593 STCP R | 126593 STCP R | 126593 STCP R | 126593 STCP R | Washer, Shim (M10.5 x 1.5) | 6 |
| 25 | 29440 FCM | 29440 FCM | 29440 FCM | 29440 FCM | Crankshaft, Dual End | 1 |
| 31 | 828710 — | 828710 — | 828710 — | 828710 — | Protector, Oil Cap w/Foam Gasket | 1 |
| 32 | 43211 ABS | 43211 ABS | 43211 ABS | 43211 ABS | Cap, Oil Filler | 1 |
| 33 | 14177 NBR | 14177 NBR | 14177 NBR | 14177 NBR | O-Ring, Oil Filler Cap - 70D | 1 |
| 34 | 126743 STCP R | 126743 STCP R | 126743 STCP R | 126743 STCP R | Bolt, Eye (M12) (For Lifting Pump Only) | 1 |
| 38 | 11338 NBR | 11338 NBR | 11338 NBR | 11338 NBR | O-Ring, Dip Stick - 70D | 1 |
| 39 | 27769 ABS | 27769 ABS | 27769 ABS | 27769 ABS | Stick, Dip | 1 |
| 40 | 80288 STZP | 89627 S | 89627 S | 89627 S | Screw, HH (M10 x 30) | 8 |
| | 126531 STCP R | — | — | — | Screw, HH (M10 x 30) | 8 |
| 41 | 12503 STZP | 15847 S | 15847 S | 15847 S | Lockwasher (M10) | 8 |
| | 126231 STCP R | — | — | — | Lockwasher (M10) | 8 |
| 42 | 126574 STCP R | 19934 S | 19934 S | 19934 S | Washer, Flat (M10) | 8 |
| 48 | 25625 STCP | 25625 STCP | 25625 STCP | 25625 STCP | Plug, Drain (1/4 x 19BSP) | 1 |
| 49 | 23170 NBR | 23170 NBR | 23170 NBR | 23170 NBR | O-Ring, Drain Plug - 70D | 1 |
| 50 | 29438 AL | 29438 AL | 29438 AL | 29438 AL | Cover, Rear | 1 |
| 51 | 29439 NBR | 29439 NBR | 29439 NBR | 29439 NBR | Gasket, Rear Cover | 1 |
| 53 | 45303 AL | 45303 AL | 45303 AL | 45303 AL | Crankcase w/Guide Pins (Incls: 34, 54) | 1 |
| 54 | 43282 S | 43282 S | 43282 S | 43282 S | Pin, Guide | 2 |
| 55 | 126553 STCP R | 89615 S | 89615 S | 89615 S | Stud (M16 x 70) | 2 |
| 64 | 29481 CM | 29481 CM | 29481 CM | 29481 CM | Pin, Crosshead | 3 |
| 65 | ‡ 45384 SSZZ | 45384 SSZZ | 45384 SSZZ | 45384 SSZZ | Rod, Plunger | 3 |
| 69 | 126588 STCP R | 126588 STCP R | 126588 STCP R | 126588 STCP R | Washer, Oil Seal | 3 |
| 70 | 29454 NBR | 29454 NBR | 29454 NBR | 29454 NBR | Seal, Oil - 80D | 3 |
| 75 | 44752 NBR | 44752 NBR | 44752 NBR | 44752 NBR | Slinger, Barrier - 85D | 3 |
| 88 | 45677 SS | 45677 SS | 45677 SS | 45677 SS | Washers, Keyhole (M14) | 3 |
| 90 | 44749 CC | 44749 CC | 44749 CC | 44749 CC | Plunger (M55 x 185) | 3 |
| 95 | 89783 S | 44748 SS | 44748 SS | 44748 SS | Stud, Plunger Retainer (M14 x 147) | 3 |
| 96 | 20214 PTFE | 20214 PTFE | 20214 PTFE | 20214 PTFE | Back-up-Ring, Plunger Retainer | 3 |
| 97 | 17616 NBR | 17616 NBR | 17616 NBR | 17616 NBR | O-Ring, Plunger Retainer - 80D | 3 |
| | 11686 FPM | 11686 FPM | 11686 FPM | 11686 FPM | O-Ring, Plunger Retainer - 80D | 3 |
| 98 | 44751 SS | 44751 SS | 44751 SS | 44751 SS | Gasket, Plunger Retainer | 3 |
| 99 | 45276 S | 44750 SS | 48959 SSD | 44750 SS | Retainer, Plunger (M14) | 3 |
| 100 | 855000 PVDF | 855000 PVDF | 855000 PVDF | 855000 PVDF | Retainer, Seal, 2-pc | 3 |
| 101 | 44762 — | 44762 — | 44762 — | 44762 — | Wick, Long Tab (M55 x 185) | 3 |
| 106 | 44757 NBR | 44757 NBR | 44757 NBR | 44757 NBR | Seal, LPS w/SS-Spg | 3 |
| | 45882 FPM | 45882 FPM | 45882 FPM | 45882 FPM | Seal, LPS w/SS-Spg | 3 |
| 110 | 49457 NABC | 45769 SS | 48980 SSD | 44754 NAB | Manifold, Inlet | 1 |
| | — | — | — | 49305 NAB | Manifold, Inlet, Flushed (1/4" Flush Ports) | 1 |
| 112 | 18175 NBR | 18175 NBR | 18175 NBR | 18175 NBR | O-Ring, Spacer, Inner - 80D | 3 |
| | 13266 FPM | 13266 FPM | 13266 FPM | 13266 FPM | O-Ring, Spacer, Inner - 70D | 3 |
| 114 | 44767 SS | 44767 SS | 48957 SSD | 44767 SS | Spacer, Inlet Manifold | 3 |
| 115 | 18175 NBR | 18175 NBR | 18175 NBR | 18175 NBR | O-Ring, Spacer, Outer - 80D | 3 |
| | 13266 FPM | 13266 FPM | 13266 FPM | 13266 FPM | O-Ring, Spacer, Outer - 70D | 3 |
| 116 | 126569 STCP R | 19086 S | 19086 S | 19086 S | Lockwasher (M16) | 4 |
| 117 | 126537 STCP R | 89729 S | 89729 S | 89729 S | Screw, HH (M16 x 55) | 4 |
| 126 | 48392 D | 48392 D | 48392 D | 48392 D | Adapter, Female | 3 |
| | 45771 SS | 45771 SS | 45771 SS | 45771 SS | Adapter, Female | 3 |
| 127 | 44764 STG* | 44764 STG* | 44764 STG* | 44764 STG* | V-Packing | 6 |
| 128 | 45772 SS | 45772 SS | 48962 SSD | 45772 SS | Adapter, Male | 3 |
| 141 | 44943 SS | 44943 SS | 44943 SS | 44943 SS | Coil Spring, Spacer | 24 |
| 142 | 48501 BB | 45383 SS | 48982 SSD | 45383 SS | Spacer w/Coil Springs | 3 |
| 155 | 18178 NBR | 18178 NBR | 18178 NBR | 18178 NBR | O-Ring, Spacer - 80D | 3 |
| | 13338 FPM | 13338 FPM | 13338 FPM | 13338 FPM | O-Ring, Spacer - 70D | 3 |
| 157 | 45321 SS | 45321 SS | 48961 SSD | 45321 SS | Spacer, V-Packing | 3 |
| 159 | 18178 NBR | 18178 NBR | 18178 NBR | 18178 NBR | O-Ring, Spacer - 80D | 3 |
| | 13338 FPM | 13338 FPM | 13338 FPM | 13338 FPM | O-Ring, Spacer - 70D | 3 |
| 160 | 44756 S | 44756 S | 44756 S | 44756 S | Pin, Guide | 2 |
| 163 | 18176 NBR | 18176 NBR | 18176 NBR | 18176 NBR | O-Ring, Seat - 80D | 6 |
| | 13278 FPM | 13278 FPM | 13278 FPM | 13278 FPM | O-Ring, Seat | 6 |
| 164 | ‡ 44772 SS | 44772 SS | 48964 SSD | 44772 SS | Seat | 6 |
| 166 | ‡ 44774 SS | 44774 SS | 48958 SSD | 44774 SS | Valve | 6 |
| 167 | 44773 SS | 44773 SS | 44773 SS | 44773 SS | Spring | 6 |
| 168 | 44775 PVDF | 44775 PVDF | 44775 PVDF | 44775 PVDF | Retainer, Spring | 6 |
| 170 | ‡ 44776 SS | 44776 SS | 48956 SSD | 44776 SS | Washer, Retainer | 6 |
| 171 | 44780 SS | 44780 SS | 44780 SS | 44780 SS | Spring, Coil, Valve Plug | 6 |
| 172 | 18177 NBR | 18177 NBR | 18177 NBR | 18177 NBR | O-Ring, Valve Plug - 80D | 6 |
| | 13279 FPM | 13279 FPM | 13279 FPM | 13279 FPM | O-Ring, Valve Plug - 70D | 6 |
| 174 | 49461 NABC | 48572 SSL | 48989 SSD | 44778 NAB | Plug, Valve [3/00] | 1 |
| 175 | — | 48573 S | 48573 S | — | Screw, HSH (M16x35) [3/00] | 24 |
| 185 | 49459 NABC | 48489 SSL | 48984 SSD | 44769 NAB | Manifold, Discharge [3/00] | 1 |

EXPLODED VIEW



Models
 Brass - 6760
 Stainless Steel - 6761
 Duplex SS - 6762
 Nickel Aluminum Bronze - 6767, 6767C
 May 2008

| | 6760 | MATL | 6761 | MATL | 6762 | MATL | 6767 | MATL | | |
|-----|----------------|-------------|---------------|-------------|---------------|-------------|---------------|-------------|--|---|
| 186 | 126569 | STCR R | 19086 | S | 19086 | S | 19086 | S | Lockwasher (M16) | 2 |
| 188 | 126744 | STCP R | 89694 | S | 89694 | S | 89694 | S | Screw, HSH (M16 x 110) | 8 |
| 194 | 126525 | STCP R | 81291 | S | 81291 | S | 81291 | S | Nut, Hex (M16) | 2 |
| 250 | 29445 | AL | 29445 | AL | 29445 | AL | 29445 | AL | Protector, Shaft | 1 |
| 255 | 33243 | — | 33243 | — | 33243 | — | 33243 | — | Kit, Mount (Included w/Pump) | 1 |
| 259 | 29477 | STZP | 29477 | STZP | 29477 | STZP | 29477 | STZP | Rail (Included w/Pump) (Two per pump required) | 2 |
| 275 | 990014 | STL | 990014 | STL | 990014 | STL | 990014 | STL | Hub, 45mm (M14x9 Keyway) [See Drive Packages, Tech Bulletin 003] | 1 |
| 279 | 30429 | STZP | 30429 | STZP | 30429 | STZP | 30429 | STZP | Oiler (10 oz.) (Not Shown) | 3 |
| 281 | 30969 | — | 30969 | — | 30969 | — | 30969 | — | Oiler, Glass (10 oz.) (Not Shown) | 3 |
| 282 | 10070 | NBR | 10070 | NBR | 10070 | NBR | 10070 | NBR | Gasket, Oiler (Not Shown) | 3 |
| 283 | 34314 | — | 34314 | — | 34314 | — | 34314 | — | Kit, Oil Drain | 1 |
| 290 | 6124 | — | 6124 | — | 6124 | — | 6124 | — | Gasket, Liquid (3.0 oz.) | 1 |
| 299 | 816760 | BBCP | 816667 | SSL | 816865 | SSD | 814820 | NAB | Head, Complete | 1 |
| 300 | 34091 | NBR* | 34091 | NBR* | 34091 | NBR* | 34091 | NBR* | Kit, Seal (Incls: 97,106,112,115,127,155,159) | 1 |
| | 34093 | FPM* | 34093 | FPM* | — | — | 34093 | FPM* | Kit, Seal (Incls: 97,106,112,115,127,155,159) | 1 |
| 310 | ‡ 34092 | NBR | 34092 | NBR | 39400 | NBR | 34092 | NBR | Kit, Valve (Incls: 163,164,166,167,168,170,172) | 2 |
| | 31273 | FPM | 31273 | FPM | — | — | 31273 | FPM | Kit, Valve (Incls: 163,164,166,167,168,170,172) | 2 |
| — | 819010 | F | 819010 | F | 819010 | F | 819010 | F | Assy, Crankcase, Cast Iron Conversion | 1 |
| — | 88902 | STZP | 88902 | STZP | 88902 | STZP | 88902 | STZP | Stud (M16x277) (For removing D.M., I.M.) | 2 |
| 390 | — | — | — | — | — | — | — | — | C.A.T. (Inlet pressure stabilizer for RO and boosted inlet applications) | 1 |
| 391 | — | — | — | — | — | — | — | — | Adapters (2 per C.A.T.) (See Data Sheet for complete selection) | 2 |
| — | 6575 | — | 6575 | — | — | — | 6575 | — | Plunger Pump Service DVD | 1 |
| — | 6105 | — | 6105 | — | 6105 | — | 6105 | — | Oil, Twin Pack (Two 2.5 Gal) ISO 68 Multi-viscosity Hydraulic (Fill to specified crankcase capacity prior to start-up) | 1 |
| — | — | — | 6119 | — | 6119 | — | — | — | Lubricant, Antiseize (1 oz.) | 1 |

Bold print part numbers are unique to a particular pump model. Italics are optional items. [] Date of latest production change.

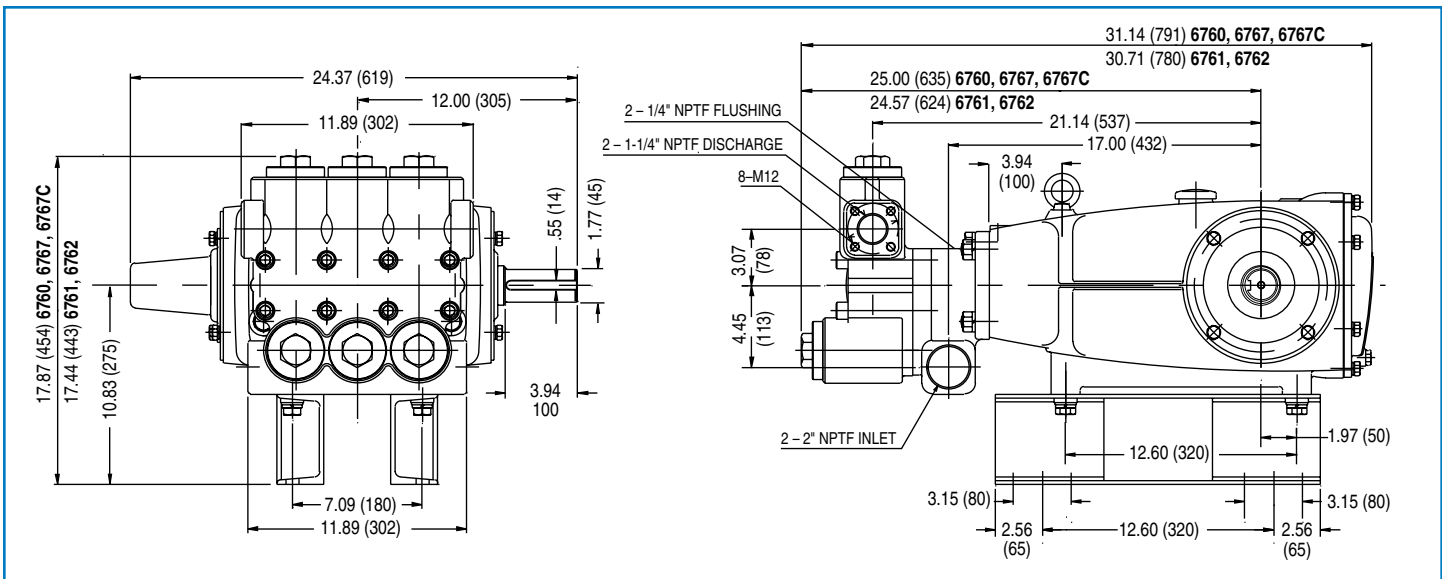
‡ Production parts 304SS, replacement parts are 316SS. R Components comply with RoHS Directive.

*Review material codes for individual items (STG generally may be used as alternate).

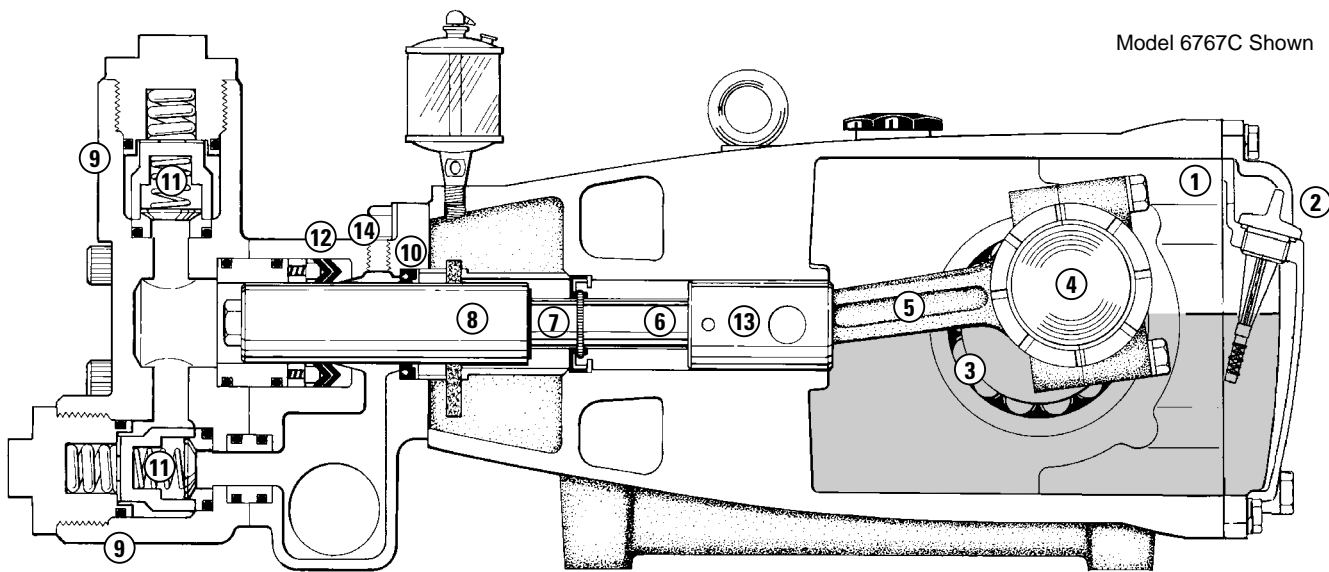
See Tech Bulletins 003, 024, 036, 043, 052, 053, 054, 064, 074, 077, 082, 083, 084, 087, 095 and 105 for additional information.

C.A.T. highly recommended for pressurized inlet, R.O. and Industrial applications.

MATERIAL CODES (Not Part of Part Number): ABS=ABS Plastic AL=Aluminum BB=Brass BBCP=Brass/Chrome Plated BBHS=Brass/High Strength CC=Ceramic CM=Chrome-Moly D=Acetal F=Cast Iron FBB=Forged Brass FCM=Forged Chrome-moly FPM=Fluorocarbon NAB=Nickel Aluminum Bronze NABC=Nickel Aluminum Bronze Chrome Plated NBR=Medium Nitrile (Buna-N) PTFE=Pure Polytetrafluoroethylene PVDF=Polyvinylidene Fluoride S=304SS SS=316SS SSD=Duplex SS SSL=316SS/Low Carbon SSZZ=316SS/Zamak STCP=Steel/Chrome Plated STG=Special Blend PTFE White STL=Steel STZP=Steel/Zinc Plated



Models 6760, 6761, 6762, 6767, 6767C



Model 6767C Shown

- 1 Die cast aluminum **crankcase** means high strength, lightweight, and excellent tolerance control.
- 2 **Dipstick** offers convenient top access for easy oil level check.
- 3 Oversized crankshaft **bearings** provide extended bearing life and pump performance.
- 4 Chrome-moly **crankshaft** provides unmatched strength and surface hardness for long life.
- 5 Matched oversized high strength **connecting rods** are noted for superior strength and bearing quality.
- 6 The **plunger rods** are high tensile strength stainless steel with Zamak crossheads.
- 7 The stainless steel **slinger** provides backup protection for the crankcase seal, keeping pumped liquids out of the crankcase.
- 8 Special concentric, high-density, polished, solid ceramic **plungers** provide a true wear surface and extend seal life.
- 9 **Manifolds** are a high tensile strength brass, nickel aluminum bronze, 316 stainless steel or Duplex SS for long term, continuous duty.
- 10 100% wet **seal** design adds to service life by allowing pumped liquids to cool and lubricate on both sides.
- 11 Stainless steel **valves, seats and springs** provide corrosion-resistance, ultimate seating and extended life.
- 12 Specially formulated, CAT PUMP exclusive, **V-Packings** offer unmatched performance and seal life.
- 13 **Crossheads** are 360° supported for uncompromising alignment.
- 14 Optional special **ported Flushed Inlet Manifold** permits external flush for lubricating and cooling seals when pumping liquids such as DI water, Hi-Temp or low lubricity.

World Headquarters

CAT PUMPS

1681 - 94th Lane N.E. Minneapolis, MN 55449-4324

Phone (763) 780-5440 — FAX (763) 780-2958

e-mail: techsupport@catpumps.com

www.catpumps.com

International Inquiries

FAX (763) 785-4329

e-mail: intlsales@catpumps.com



The Pumps with Nine Lives

CAT PUMPS (U.K.) LTD.

1 Fleet Business Park, Sandy Lane, Church Crookham

FLEET, Hampshire, GU52 8BF, England

Phone Fleet 44 1252-622031 — Fax 44 1252-626655

e-mail: sales@catpumps.co.uk

N.V. CAT PUMPS INTERNATIONAL S.A.

Heiveldekens 6A, B-2550 Kontich, Belgium

Phone 32-3-450.71.50 — Fax 32-3-450.71.51

e-mail: cpi@catpumps.be www.catpumps.be

CAT PUMPS DEUTSCHLAND GmbH

Buchwiese 2, D-65510 Idstein, Germany

Phone 49 6126-9303 0 — Fax 49 6126-9303 33

e-mail: catpumps@t-online.de www.catpumps.de