

38 Frame Block-Style Stainless Steel Plunger Pump

Standard Models 3821, 3831

Flushed Models 3821K, 3831K

FEATURES

Superior Design

- Triplex plunger design gives smoother fluid flow.
- Inlet and discharge valve assemblies interchange for easier maintenance.
- Oil bath crankcase assures optimum lubrication.
- Close tolerance concentricity of the ceramic plunger maximizes seal life.
- **Standard Models:** Lo-Pressure Seals and V-Packings are completely lubricated and cooled by the fluid being pumped.
- **Flushed Models:** Special ported inlet manifold permits fluid to cool or flush between V-Packings and Lo-Pressure Seals providing protection against high temperatures or contaminating pumped fluids.

Quality Materials

- All 316 stainless steel valves are heat treated and seats are roller burnished for a positive seal and extended valve life.
- 316 stainless steel block-style manifolds for strength and corrosion resistance.
- Special concentric, high density, polished, graphite impregnated, solid ceramic plungers are abrasion resistant and result in extended seal life.
- Specially formulated, CAT PUMP exclusive, V-Packings offer unmatched performance and seal life.
- Die cast aluminum crankcase provides high strength, minimum weight and precision tolerance control.
- Chrome-moly crankshaft gives unmatched strength and surface hardness.
- Oversized crankshaft bearings with greater loading capacity means longer bearing life.

Easy Maintenance

- Wet-end is easily serviced without entering crankcase, requiring less time and effort.
- Valve assemblies are accessible without disturbing piping, for quick service.
- Preset packings mean no packing gland adjustment is necessary, reducing maintenance costs.

DETERMINING THE PUMP R.P.M. $\frac{\text{Rated G.P.M.}}{\text{Rated R.P.M.}} = \frac{\text{"Desired" G.P.M.}}{\text{"Desired" R.P.M.}}$

DETERMINING THE REQUIRED H.P. $\frac{\text{GPM} \times \text{PSI}}{1460} = \text{Electric Brake H. P. Required}$

DETERMINING MOTOR PULLEY SIZE $\frac{\text{Motor Pulley O.D.}}{\text{Pump R.P.M.}} = \frac{\text{Pump Pulley O.D.}}{\text{Motor R.P.M.}}$

Note: Consult engine manufacturer when using gas or diesel engine. Refer to pump Service Manual for important Inlet Condition Check-List, Start-up Procedure, Tech Bulletins and Pump Maintenance information.

SPECIFICATIONS

	U.S. Measure	Metric Measure
MODEL 3821, 3821K		
Volume	23 GPM	(87 L/M)
Discharge Pressure	100 to 2000 PSI	(7 to 140 BAR)
Bore.....	1.260"	(32 mm)

MODEL 3831, 3831K		
Volume	36 GPM	(140 L/M)
Discharge Pressure	100 to 1200 PSI	(7 to 85 BAR)
Bore.....	1.575"	(40 mm)

COMMON SPECIFICATIONS

Maximum Inlet Pressure	Flooded to 70 PSI	(Flooded to 4.9 BAR)
RPM	800 RPM	(800 RPM)
Stroke.....	1.890"	(48 mm)
Crankcase Capacity.....	4.2 Qts.	(4 L)
Maximum Fluid Temperature	160°F	(71°C)
Inlet Ports (2)	1-1/2" NPT	(1-1/2" NPT)
Discharge Ports (2).....	1" NPT	(1" NPT)
Pulley Mounting	Either Side	(Either Side)
Shaft Diameter	1.378"	(35 mm)
Weight.....	167 lbs.	(75 kg)
Dimensions	24.4" x 18.11" x 11.54"	(620 x 460 x 293 mm)

HORSEPOWER REQUIREMENTS

MODEL	FLOW		PRESSURE						RPM
			PSI 800	PSI 1000	PSI 1200	PSI 1500	PSI 1800	PSI 2000	
	U.S. GPM	L/M	BAR 55	BAR 70	BAR 85	BAR 105	BAR 125	BAR 140	
3821	23	87	N/A	N/A	N/A	23.7	28.4	31.6	800
3821K	20	76	N/A	N/A	N/A	20.6	24.7	27.5	696
	18	68	N/A	N/A	N/A	18.6	22.3	26.3	626
3831	36	140	19.8	24.7	29.7	N/A	N/A	N/A	800
3831K	30	114	16.5	20.6	24.7	N/A	N/A	N/A	667
	25	95	13.7	17.2	20.6	N/A	N/A	N/A	556

See complete Drive Packages [Incls: Pulleys, Belts, Hubs, Key] Tech Bulletin 03.

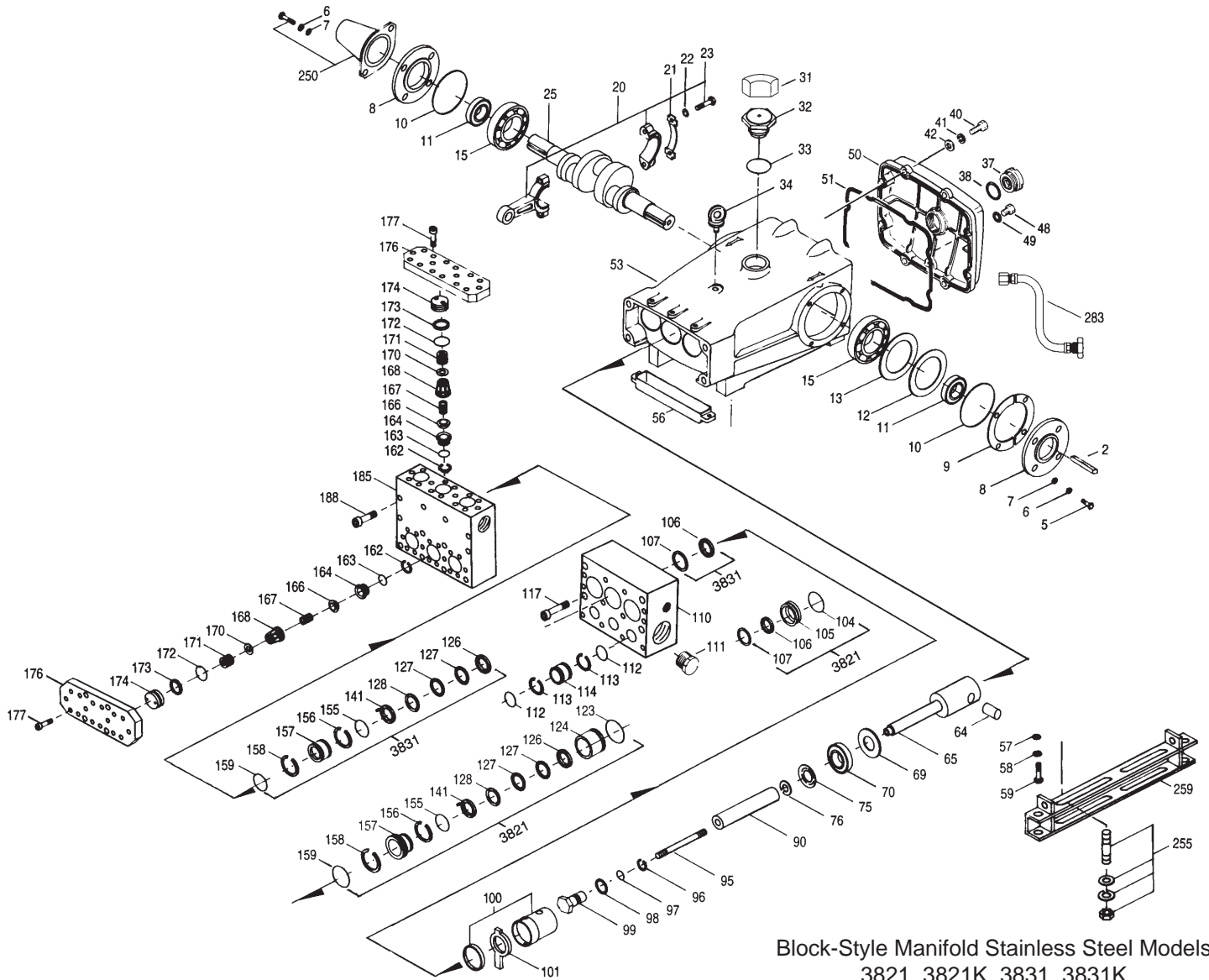
"Customer confidence is our greatest asset"

PARTS LIST

ITEM	3821	MATL	3821K	MATL	3831	MATL	3831K	MATL	DESCRIPTION	QTY
2	34021	STL	34021	STL	34021	STL	34021	STL	Key (M10x8x70)	1
5	89277	SS	89277	SS	89277	SS	89277	SS	Screw, HH (M8x25)	8
6	15846	S	15846	S	15846	S	15846	S	Lockwasher, Split (M8)	8
7	13534	SS	13534	SS	13534	SS	13534	SS	Washer (M8)	8
8	44542	AL	44542	AL	44542	AL	44542	AL	Cover, Bearing	2
	701138	F	701138	F	701138	F	701138	F	Cover, Bearing (Use w/701137, 39, 40, 45, 46)	2
9	44543		44543		44543		44543		Shim, Bearing, Cover	4
10	12398	NBR	12398	NBR	12398	NBR	12398	NBR	O-Ring, Bearing, Cover	2
11	13296	NBR	13296	NBR	13296	NBR	13296	NBR	Seal, Oil, Crankshaft	2
15	29326	STL	29326	STL	29326	STL	29326	STL	Bearing, Roller	2
20	46611	HS	46611	HS	46611	HS	46611	HS	Rod, Connecting Assembly	3
21	44940	STZP	44940	STZP	44940	STZP	44940	STZP	Washer, Locking (M10)	3
22	43641	STL	43641	STL	43641	STL	43641	STL	Washer (M10)	6
23	88155	STL	88155	STL	88155	STL	88155	STL	Screw, HH (M10x60)	6
25	29325	FCM	29325	FCM	29325	FCM	29325	FCM	Crankshaft, Dual End	1
31	828710		828710		828710		828710		Protector, Oil Cap	1
32	43211		43211		43211		43211		Cap, Oil Filler	1
33	14177	NBR	14177	NBR	14177	NBR	14177	NBR	O-Ring, Oil Filler Cap	1
34	44319	STZP	44319	STZP	44319	STZP	44319	STZP	Bolt, Eye (M12)	1
35	701145	AL	701145	AL	701145	AL	701145	AL	Rivet, Serial Plate (Use w/701137, 38, 39, 40, 46)	4
36	701146	AL	701146	AL	701146	AL	701146	AL	Plate, Name (Use w/701137, 38, 39, 40, 45)	1
37	43987		43987		43987		43987		Gauge, Oil, Bubble	1
38	44428	NBR	44428	NBR	44428	NBR	44428	NBR	Gasket, Flat, Flex.	1
40	89277	SS	89277	SS	89277	SS	89277	SS	Screw, HH (M8x25)	8
41	15846	S	15846	S	15846	S	15846	S	Lockwasher, Split (M8)	8
42	13534	SS	13534	SS	13534	SS	13534	SS	Washer (M8)	8
48	25625	STCP	25625	STCP	25625	STCP	25625	STCP	Plug, Drain (1/4"x11)	1
49	23170	NBR	23170	NBR	23170	NBR	23170	NBR	O-Ring, Drain Plug	1
50	45936	AL	45936	AL	45936	AL	45936	AL	Cover, Crankcase	1
	701139	F	701139	F	701139	F	701139	F	Cover, Crankcase (Use w/701137, 38, 40, 45, 46)	1
51	16612	NBR	16612	NBR	16612	NBR	16612	NBR	O-Ring, Crankcase Cover	1
53	44559	AL	44559	AL	44559	AL	44559	AL	Crankcase	1
	701137	F	701137	F	701137	F	701137	F	Crankcase (Use w/701138, 39, 40, 45, 46)	1
55	27488	S	27488	S	27488	S	27488	S	Pins, Guide	2
56	27790	POP	27790	POP	27790	POP	27790	POP	Pan, Oil	1
57	19933	S	19933	S	19933	S	19933	S	Washer (M6)	2
58	15849	S	15849	S	15849	S	15849	S	Lockwasher, Split (M6)	2
59	89618	S	89618	S	89618	S	89618	S	Screw, HH (M6x16)	2
64	43864	S	43864	S	43864	S	43864	S	Pin, Rist	3
65	45116	SSZZ	45116	SSZZ	45116	SSZZ	45116	SSZZ	Rod, Plunger	3
69	29338	S	29338	S	29338	S	29338	S	Washer, Oil Seal	3
70	100488	NBR	100488	NBR	100488	NBR	100488	NBR	Seal, Oil, Crankcase	3
	44739	FPM	44739	FPM	44739	FPM	44739	FPM	Seal, Oil, Crankcase	3
75	43865	S	43865	S	43865	S	43865	S	Slinger, Barrier	3
88	45676	SS	45676	SS	45676	SS	45676	SS	Washer, Keyhole (M16)	3
90	43957	CC	43957	CC	43921	CC	43921	CC	Plunger (M77)	3
95	89778	SS	89778	SS	89778	SS	89778	SS	Stud, Plunger Retainer (M10x122)	3
96	20189	PTFE	20189	PTFE	20189	PTFE	20189	PTFE	Back-up-Ring, Plunger Retainer	3
97	11345	NBR	11345	NBR	11345	NBR	11345	NBR	O-Ring, Plunger Retainer	3
	11375	FPM	11375	FPM	11375	FPM	11375	FPM	O-Ring, Plunger Retainer	3
98	44085	SS	44085	SS	44085	SS	44085	SS	Gasket	3
99	44084	SS	44084	SS	44084	SS	44084	SS	Retainer, Plunger (M10)	3
100	814279	PVDF	814279	PVDF	814279	PVDF	814279	PVDF	Retainer, Seal, 2 Pc.	3
101	44106		44106		44112		44112		Wick, Long Tab	3
104	43875	NBR	43875	NBR	—		—		O-Ring, Inlet Adapter	3
	44826	FPM	44826	FPM	—		—		O-Ring, Inlet Adapter	3
105	45562	SS	45562	SS	—		—		Adapter, Inlet	3
106	44098	NBR	44098	NBR	44113	NBR	44113	NBR	LPS w/SS-Spg	3
	44827	FPM	44827	FPM	44740	FPM	44740	FPM	LPS w/SS-Spg	3
107	44101	SS	44101	SS	46955	EPDM	46955	EPDM	LPS w/SS-Spg	3
110	701286	SSL	701286	SSL	45381	SS	45381	SS	Spacer, Lo-Pressure Seal	3
	—		701408	SSL	—		701408	SSL	Manifold, Inlet, Block-Style	1
111	701116	SS	701116	SS	701116	SS	701116	SS	Manifold, Inlet, Block-Style, Flushed	1
112	701794	NBR	701794	NBR	701794	NBR	701794	NBR	Plug, Inlet (1/2" NPT)	1
	701318	FPM	701318	FPM	701318	FPM	701318	FPM	O-Ring, Inlet Spacer	6
	—		—		701318	FPM	701318	FPM	O-Ring, Inlet Spacer	6
113	701319	PTFE	701319	PTFE	701495	EPDM	701495	EPDM	O-Ring, Inlet Spacer	6
114	701317	SS	701317	SS	701319	PTFE	701319	PTFE	Back-up-Ring, Inlet Spacer	6
117	701252	SS	701252	SS	701317	SS	701317	SS	Adapter, Spacer, Inlet	3
123	12391	NBR	12391	NBR	701252	SS	701252	SS	Screw, HSH (M14x100)	4
	13266	FPM	13266	FPM	—		—		O-Ring, V-Packing Cylinder	3
124	45563	SS	45563	SS	—		—		O-Ring, V-Packing Cylinder	3
126	45564	SS	45564	SS	45367	SS	45367	SS	Cylinder, V-Packing	3
127	44608	PTFE	44608	PTFE	44609	PTFE	44609	PTFE	Adapter, Female	3
	44829	FPM	44829	FPM	44741	FPM	44741	FPM	V-Packing, White	6
128	45565	SS	45565	SS	45368	SS	45368	SS	V-Packing	6
141	45113	SS	45113	SS	45368	SS	45368	SS	Adapter, Male	3
142	45566	SS	45566	SS	45113	SS	45113	SS	Springs, Coil	6/18
155	18697	NBR	18697	NBR	45382	SS	45382	SS	Spacer w/Coil Springs	3
	20137	FPM	20137	FPM	18697	NBR	18697	NBR	O-Ring, V-Packing Spacer	3
	—		—		20137	FPM	20137	FPM	O-Ring, V-Packing Spacer	3
156	48362	D	48362	D	20137	FPM	20137	FPM	O-Ring, V-Packing Spacer	3
157	45674	SS	45674	SS	701491	EPDM	701491	EPDM	O-Ring, V-Packing Spacer	3
158	48371	D	48371	D	48362	D	48362	D	Back-up-Ring, V-Packing Spacer	3
159	25495	NBR	25495	NBR	45369	SS	45369	SS	Spacer, V-Packing	3
	11748	FPM	11748	FPM	48362	D	48362	D	Back-up-Ring, Spacer	3
	—		—		18697	NBR	18697	NBR	O-Ring, V-Packing Spacer	3
162	44614	PTFE	44614	PTFE	20137	FPM	20137	FPM	O-Ring, V-Packing Spacer	3
163	26142	NBR	26142	NBR	48363	D	48363	D	O-Ring, V-Packing Spacer	3
	14330	FPM	14330	FPM	48363	D	48363	D	Back-up-Ring, Seat	6
	—		—		26142	NBR	26142	NBR	O-Ring, Seat	6
164	44612	SS	44612	SS	14330	FPM	14330	FPM	O-Ring, Seat	6
166	44108	SS	44108	SS	701493	EPDM	701493	EPDM	O-Ring, Seat	6
167	44109	SS	44109	SS	44612	SS	44612	SS	Seat, Stepped	6
168	44728	PVDF	44728	PVDF	44108	SS	44108	SS	Valve	6
170	44729	SS	44729	SS	44109	SS	44109	SS	Spring	6
171	44644	SS	44644	SS	44728	PVDF	44728	PVDF	Retainer, Spring	6
	—		—		44729	SS	44729	SS	Washer, Spring Retainer	6
	—		—		44644	SS	44644	SS	Spring, Coil (70kg), Valve Plug	6

Replace as a set

EXPLODED VIEW



Block-Style Manifold Stainless Steel Models
3821, 3821K, 3831, 3831K
July 1998

172	89827	NBR	89827	NBR	89827	NBR	89827	NBR	O-Ring, Valve Plug - 90	6
	11747	FPM	11747	FPM	11747	FPM	11747	FPM	O-Ring, Valve Plug	6
					◆ 701494	EPDM	◆ 701494	EPDM	O-Ring, Valve Plug	6
173	20388	PTFE	20388	PTFE	48364	D	48364	D	Back-up-Ring, Valve Plug	6
174	701278	SS	701278	SS	701278	SS	701278	SS	Plug, Valve	6
● 176	701316	SS	701316	SS	701316	SS	701316	SS	Plate, Valve	2
● 177	87951	SS	87951	SS	87951	SS	87951	SS	Screw, HSH (M10x30)	32
● 185	701315	SSL	701315	SSL	701315	SSL	701315	SSL	Manifold, Discharge, Block-Style	1
● 188	701279	SS	701279	SS	701279	SS	701279	SS	Screw, HSH (M12x100)	12
● 250	44516	NY	44516	NY	44516	NY	44516	NY	Protector, Shaft w/2 89283 screws	1
●	701140	F	701140	F	701140	F	701140	F	Protector, Shaft (Use w/701137, 38, 39, 45, 46)	1
● 255	34039	SS	34039	SS	34039	SS	34039	SS	Kit, Stud Mount	1
● 260	92674	STZP	92674	STZP	92674	STZP	92674	STZP	Mount, Rail, Assy (43888,34018)	1
● 275	990013	STL	990013	STL	990013	STL	990013	STL	Hub, "B", (Keyway M10x8x70) [See complete Drive Packages Tech 03]	1
● 279	30278	STZP	—	—	30278	STZP	—	—	Oiler (1 oz.)	3
● 281	30967	—	—	—	30967	—	—	—	Glass, Oiler	3
● 282	10069	—	—	—	10069	—	—	—	Gasket, Oiler	3
● 283	34334	—	34334	—	34334	—	34334	—	Kit, Oil Drain	1
● 290	6108	—	6108	—	6108	—	6108	—	Gasket, Liquid (1.5 oz.)	1
● 299	901401	SS	—	—	901400	SSL	—	—	Head, Complete, Block-Style	1
●	—	—	901405	SS	—	—	901404	SSL	Head, Complete, Block-Style, Flushed	1
●	—	—	701699	NBR	701744	NBR	701744	NBR	Kit, Seal (Incls: 97, 106, 112, 113, 127, 155, 156, 158, 159)	1
● 300	701699	NBR	701699	NBR	701744	NBR	701744	NBR	Kit, Seal (Incls: 97, 106, 112, 113, 127, 155, 156, 158, 159)	1
●	33269	FPM	33269	FPM	33268	FPM	33268	FPM	Kit, Seal (Incls: 97, 106, 112, 113, 127, 155, 156, 158, 159)	1
●	—	—	—	—	◆ 701797	EPDM	◆ 701797	EPDM	Kit, Seal (Incls: 97, 106, 112, 113, 127, 155, 156, 158, 159)	1
● 310	34017	NBR	34017	NBR	34017	NBR	34017	NBR	Kit, Valve (Incls: 162, 163, 164, 166, 167, 168, 170, 172, 173)	2
●	35255	FPM	35255	FPM	35255	FPM	35255	FPM	Kit, Valve (Incls: 162, 163, 164, 166, 167, 168, 170, 172, 173)	2
●	—	—	—	—	◆ 35252	EPDM	◆ 35252	EPDM	Kit, Valve (Incls: 162, 163, 164, 166, 167, 168, 170, 172, 173)	2
●	—	—	—	—	—	—	—	—	C.A.T. (For R.O. or Industrial Applications)	1
●	—	—	—	—	—	—	—	—	Adapter (2 per C.A.T.) (See Data Sheet for complete selection)	2
●	6565.7	—	—	—	6565.7	—	—	—	Plunger Pump Service Video	1

● Industrial discount. **Bold print part numbers are unique to a particular pump model.** *Italics are optional items.* ◆ Silicon oil/grease required.

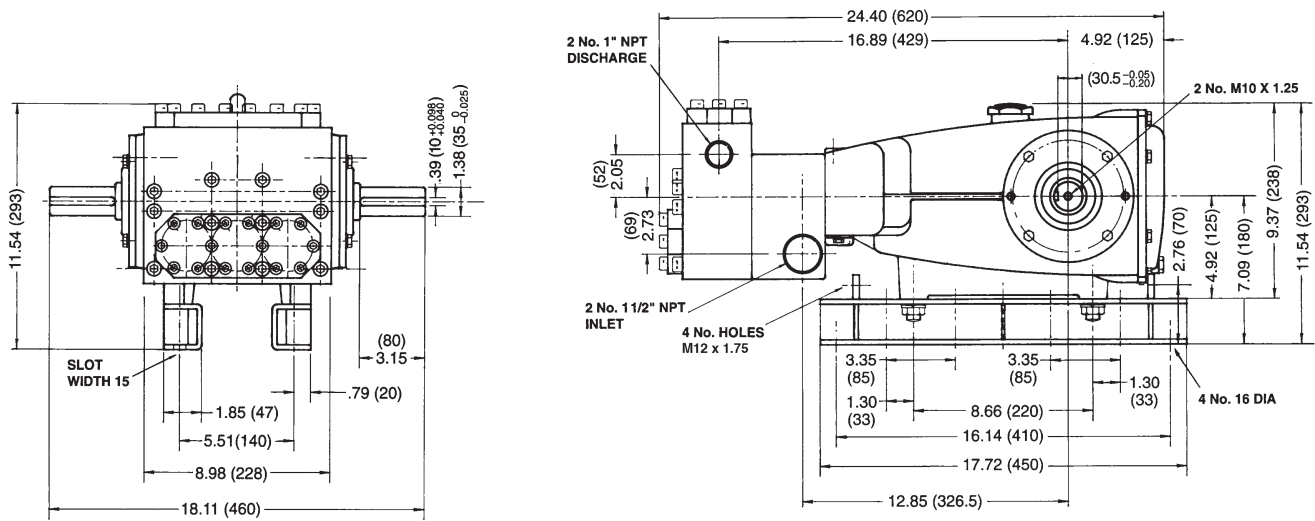
Pressurized Inlet and C.A.T. highly recommended for Hi-Temp, R.O. and industrial applications. See Tech Bulletins 03, 24, 36, 53, 74 and 77 for additional information.

MATERIAL CODES (Not Part of Part Number): AL=Aluminum BBCP=Brass/Chrome Plated CC=Ceramic D=Delryn

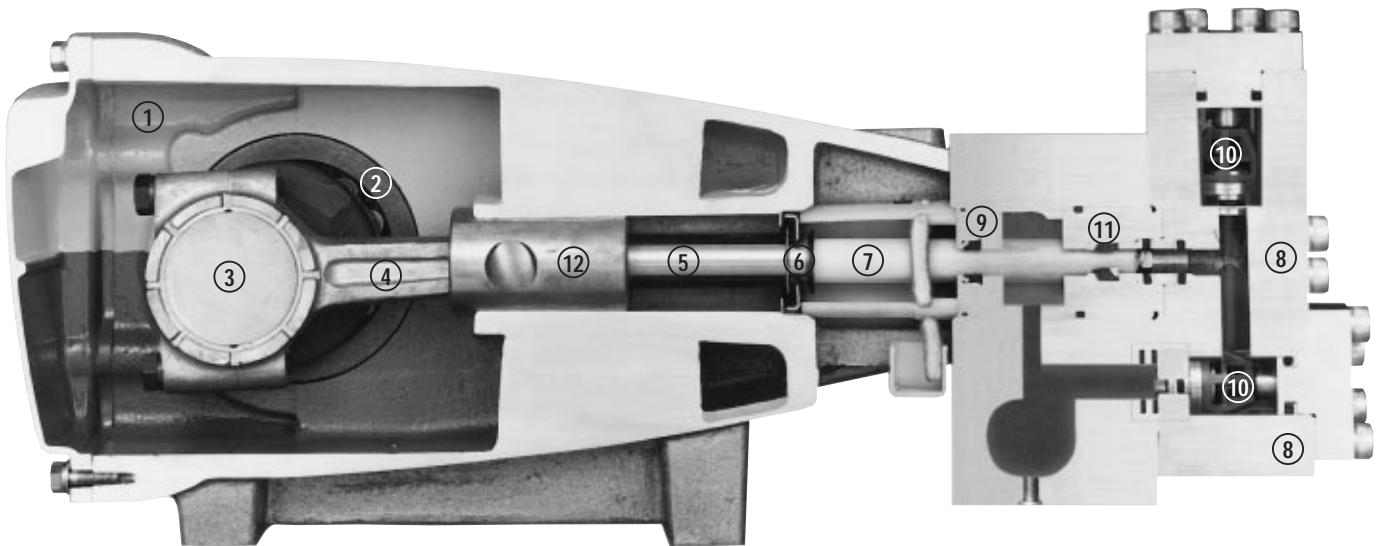
EPDM=Ethylene Propylene Diene Monomer F=Cast Iron FCM=Forged Chrome-moly FPM=Fluorocarbon (Viton®) HT=Hi-Temp (EPDM Alternative)

NBR=Medium Nitrile (Buna-N) NY=Nylon POP=Polypropylene PTFE=Polytetrafluoroethylene (Teflon®) PVDF=Fluoroplastic (High Strength)

S=304SS SS=316SS SSL=316SS/Low Carbon SSZZ=316SS/Zamac STL=Steel STZP=Steel/Zinc Plated



Models 3821, 3821K, 3831, 3831K



- 1 Die cast aluminum **crankcase** means high strength, lightweight, and excellent tolerance control.
- 2 Oversized crankshaft **bearings** provide extended bearing life and pump performance.
- 3 Chrome-moly **crankshaft** provides unmatched strength and surface hardness for long life.
- 4 Matched oversized high strength **connecting rods** are noted for superior strength and bearing quality.
- 5 Special stainless steel **plunger rods** with high strength crossheads for longevity and corrosion resistance.

- 6 The stainless steel **slinger** provides back-up protection for the crankcase seal, keeping pumped fluids out of the crankcase.
- 7 Special concentric, high density, polished, graphite impregnated, solid ceramic **plungers** are abrasion resistant and result in extended seal life.
- 8 **Manifolds** are 316 stainless steel block-style for long-term, continuous-duty and corrosion resistance.
- 9 **Standard Models:** Lo-Pressure Seals and V-Packings are completely lubricated and cooled by the fluid being pumped.

- 9 **Flushed Models:** Special ported inlet manifold permits fluid to cool or flush between V-Packings and Lo-Pressure Seals providing protection against high temperatures or contaminating pumped fluids.
- 10 Stainless steel **valves, seats and springs** provide corrosion-resistance, positive seating and long life.
- 11 Specially formulated, CAT PUMP exclusive, **V-Packings** offer unmatched performance and seal life.
- 12 **Crossheads** are 360° supported for uncompromising alignment.

Products described hereon are covered by one or more of the following U.S. patents 3558244, 3652188, 3809508, 3920356, 3930756 and 5035580

July 1998 7852

World Headquarters
CAT PUMPS

1681 - 94th Lane N.E. Minneapolis, MN 55449-4324
Phone (612) 780-5440 — FAX (612) 780-2958
e-mail: sales@catpumps.com
www.catpumps.com

International Inquiries
FAX (612) 785-4443

e-mail: intlsales@catpumps.com



The Pump with "Nine Lives"

CAT PUMPS (U.K.) LTD.

1 Fleet Business Park, Sandy Lane, Church Crookham, Fleet
Hampshire GU13 0BF, England

Phone Fleet 44 1252-622031 — Fax 44 1252-626655

N.V. CAT PUMPS INTERNATIONAL S.A.

Heiveldekens 6A, 2550 Kontich, Belgium
Phone 32-3-450.71.50 — Fax 32-3-450.71.51

e-mail: cpi@catpumps.be

CAT PUMPS DEUTSCHLAND GmbH

Buchwiese 2, D-65510 Idstein, Germany
Phone 49 6126-93030 — Fax 49 6126-930333

e-mail: catpumps@t-online.de