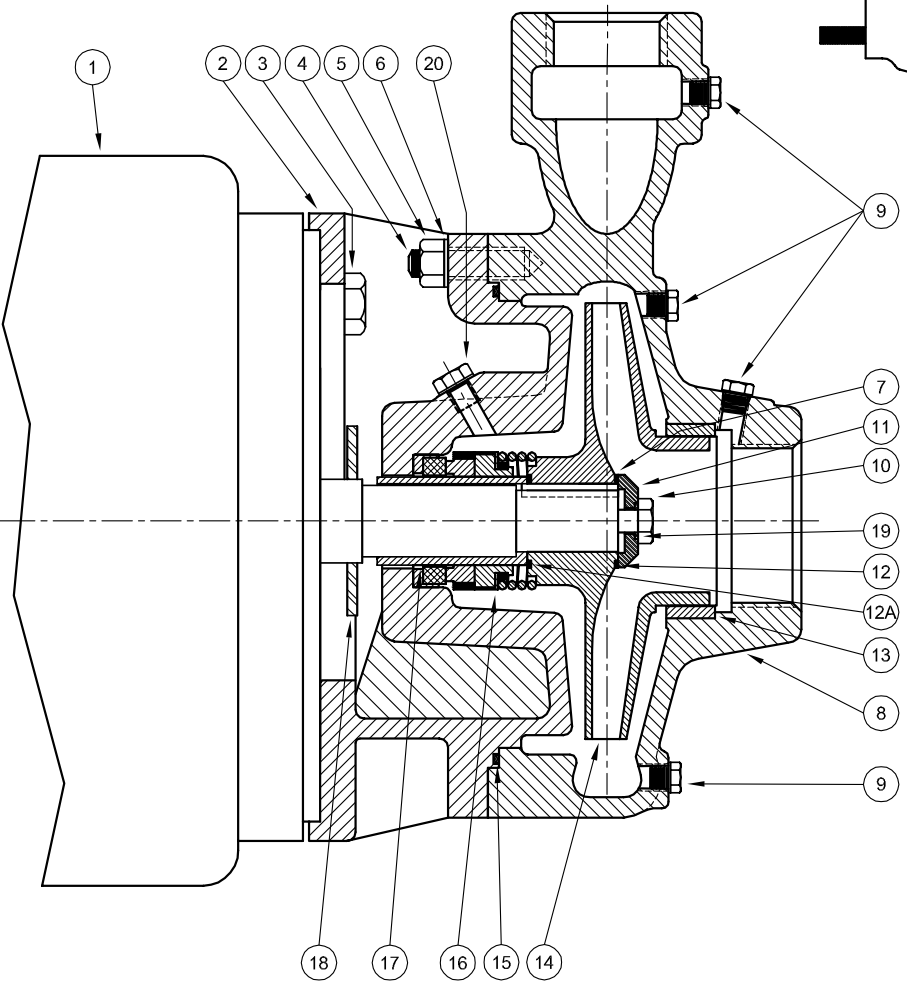
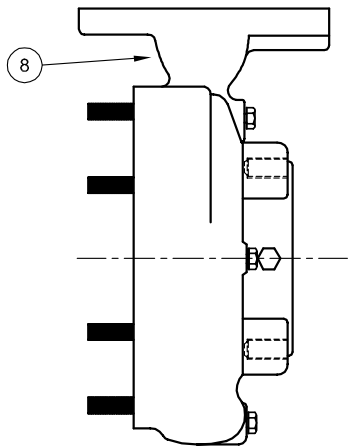


*Centrifugals - Close Coupled*

FLANGED CASING ASSEMBLY



| 1 - MOTORS                         |                                 |       |            |       |
|------------------------------------|---------------------------------|-------|------------|-------|
| RPM & PHASE                        | PART NUMBER                     | HP    | FRAME SIZE |       |
| <b>OPEN DRIP PROOF</b>             |                                 |       |            |       |
| 1750 RPM<br>Single Phase<br>(ODP)  | 21393                           | 1     | 143JM      |       |
|                                    | 21394                           | 1½    | 145JM      |       |
| 1750 RPM<br>Three Phase<br>(ODP)   | 21419                           | 1     | 143JM      |       |
|                                    | 21420                           | 1½    | 145JM      |       |
| 3500 RPM<br>Single Phase<br>(ODP)  | 09899                           | 1½    | 143JM      |       |
|                                    | 09900                           | 2     | 145JM      |       |
|                                    | 09901                           | 3     | 182JM      |       |
|                                    | 09902                           | 5     | 184JM      |       |
| 3500 RPM<br>Three Phase<br>(ODP)   | 09903                           | 1½    | 143JM      |       |
|                                    | 09904                           | 2     | 145JM      |       |
|                                    | 09905                           | 3     | 145JM      |       |
|                                    | 09906                           | 5     | 182JM      |       |
|                                    | 09907                           | 7½    | 184JM      |       |
|                                    | 09999                           | 10    | 213JM      |       |
|                                    | 09999                           | 10    | 215JM      |       |
| <b>TOTALLY ENCLOSED</b>            |                                 |       |            |       |
| 1750 RPM<br>Single Phase<br>(TEFC) | 21399                           | 1     | 143JM      |       |
|                                    | 21400                           | 1½    | 145JM      |       |
|                                    | 21401                           | 2     | 182JM      |       |
| 1750 RPM<br>Three Phase<br>(TEFC)  | 21426                           | 1     | 143JM      |       |
|                                    | 21427                           | 1½    | 145JM      |       |
|                                    | 21428                           | 2     | 145JM      |       |
| 3500 RPM<br>Single Phase<br>(TEFC) | 21880                           | 2     | 145JM      |       |
|                                    | 21881                           | 3     | 182JM      |       |
|                                    | 22283                           | 5     | 213JM      |       |
|                                    | 09948                           | 2     | 145JM      |       |
| 3500 RPM<br>Three Phase<br>(TEFC)  | 09947                           | 3     | 182JM      |       |
|                                    | 09950                           | 5     | 184JM      |       |
|                                    | 09951                           | 7½    | 213JM      |       |
|                                    | 20000                           | 10    | 215JM      |       |
|                                    | <b>EXPLOSION PROOF</b>          |       |            |       |
|                                    | 1750 RPM<br>Three Phase<br>(XP) | 21433 | 1          | 143JM |
| 21434                              |                                 | 1½    | 145JM      |       |
| 21435                              |                                 | 2     | 145JM      |       |
| 21436                              |                                 | 3     | 182JM      |       |
| 21437                              |                                 | 5     | 184JM      |       |
| 21438                              |                                 | 7½    | 213JM      |       |
| 3500 RPM<br>Three Phase<br>(XP)    | 09952                           | 2     | 145JM      |       |
|                                    | 09953                           | 3     | 182JM      |       |
|                                    | 09954                           | 5     | 184JM      |       |
|                                    | 09955                           | 7½    | 213JM      |       |
|                                    | 20001                           | 10    | 215JM      |       |

| SYMBOL NUMBER                                      | PART NUMBER | QTY | DESCRIPTION                     |
|--|-------------|-----|---------------------------------|
| 17   | 22063-C     | 1   | Shaft Sleeve - Bronze           |
| 18   | 09918       | 1   | Slinger Washer                  |
| 19   | 22080       | 1   | O-Ring Gasket - Buna N (Std)    |
|  | 2-31005-012 | 1   | O-Ring Gasket - Viton           |
|  | 22093       | 1   | O-Ring Gasket - EPT**           |
|  | 22082       | 1   | O-Ring Gasket - Teflon          |
| 20   | 04236       | 1   | Pipe Plug, 1/4" - Bronze        |
| <b>DIFFERING PARTS FOR ALL BRONZE CONSTRUCTION</b> |             |     |                                 |
| 2  | 09912-B     | 1   | Adapter - 143-184JM Motors      |
|  | 09920-B     | 1   | Adapter - 213-215JM Motors      |
| 3  | 03289       | 4   | Cap Screw - for 09912-B Adapter |
|  | 01638-B     | 4   | Cap Screw - for 09920-B Adapter |
| 5  | 05536       | 8   | Nut                             |
|  | 01609-B     | 8   | Washer                          |
| 8  | 22150-A     | 1   | Casing Assy - G6-1-1/2          |
|  | 22151-A     | 1   | Casing Assy - G6-2              |
| 10   | 22269-A     | 1   | Casing Assy - G6-2F (Flanged)   |
|  | 03289       | 1   | Screw, Impeller Lock - Bronze   |
| <b>DIFFERING PARTS FOR ALL IRON CONSTRUCTION</b>   |             |     |                                 |
| *8   | 22150-B     | 1   | Casing Assy - G6-1-1/2          |
|  | 22151-B     | 1   | Casing Assy - G6-2              |
|  | 22269-B     | 1   | Casing Assy - G6-2F (Flanged)   |
| 9  | 00158       | 6   | Pipe Plug                       |
|  | 22105-A     | 1   | Washer - Steel                  |
| 13   | 09915-A     | 1   | Wear Ring - G6-1-1/2            |
|  | 09923-A     | 1   | Wear Ring - G6-2                |
| 14   | 09928-A     | 1   | Impeller - G6-1-1/2             |
|  | 09929-A     | 1   | Impeller - G6-2                 |
| Use same size suffixes as bronze.                  |             |     |                                 |
| 17   | 22063-A     | 1   | Shaft Sleeve - SS               |
|  | 04236-A     | 1   | Pipe Plug, 1/4" - SS            |

(\*) Casing Assy. Includes Symbols 4, 9 & 13.

(\*\*) For hot water or Caustic service.

(+) G6-1½ and G6-2 Series pumps have been manufactured with either a flat or O-ring type gasket. Determine which type is required before ordering. When in doubt, order flat gasket.

| SYMBOL NUMBER   | PART NUMBER                      | QTY | DESCRIPTION                           |
|-----------------|----------------------------------|-----|---------------------------------------|
| 2               | 09912                            | 1   | Adapter - 143-184JM Motors            |
|                 | 09920                            | 1   | Adapter - 213-215JM Motors            |
| 3               | 01928                            | 4   | Cap Screw - for 09912 Adapter         |
|                 | 1-68-6                           | 4   | Cap Screw - for 09920 Adapter         |
| 4               | 03075                            | 8   | Stud                                  |
| 5               | 15-23-6                          | 8   | Nut                                   |
| 6               | 01609-A                          | 8   | Washer                                |
| 7               | 23014                            | 1   | Key                                   |
| *8              | 22150                            | 1   | Casing Assy - G6-1-1/2                |
|                 | 22151                            | 1   | Casing Assy - G6-2                    |
|                 | 22269                            | 1   | Casing Assy - G6-2F (Flanged)         |
| 9               | 01691-A                          | 6   | Pipe Plug, 1/8" - Bronze              |
|                 | 1-529-1                          | 1   | Screw, Impeller Lock - SS             |
| 10              | 22105-C                          | 1   | Washer - Bronze                       |
| 12              | 09933                            | 1   | Flat Gasket +                         |
|                 | 22083                            | 2   | O-Ring Gasket - Buna N (Std)          |
|                 | 22084                            | 2   | O-Ring Gasket - Viton                 |
|                 | 22094                            | 2   | O-Ring Gasket - EPT**                 |
|                 | 22085                            | 2   | O-Ring Gasket - Teflon                |
| 12A             | 09911                            | 1   | Flat Gasket+                          |
|                 | For O-Ring Gasket, see symbol 12 |     |                                       |
| 13              | 09915                            | 1   | Wear Ring, Bronze - G6-1-1/2          |
|                 | 09923-E                          | 1   | Wear Ring, Bronze - G6-2              |
| <b>1750 RPM</b> |                                  |     |                                       |
| 14              | 09928-6.25                       | 1   | Impeller - 104G6-1-1/2 & 3104G6-1-1/2 |
|                 | 09929-6.19                       | 1   | Impeller - 104G6-2 & 3104G6-2         |
|                 | 09929-6.25                       | 1   | Impeller - 154G6-2 & 3154G6-2         |
| <b>3450 RPM</b> |                                  |     |                                       |
| 14              | 09928-4.38                       | 1   | Impeller - 15G6-1-1/2 & 315G6-1-1/2   |
|                 | 09928-4.63                       | 1   | Impeller - 20G6-1-1/2 & 320G6-1-1/2   |
|                 | 09928-5.06                       | 1   | Impeller - 30G6-1-1/2 & 330G6-1-1/2   |
|                 | 09928-5.88                       | 1   | Impeller - 50G6-1-1/2 & 350G6-1-1/2   |
|                 | 09928-6.25                       | 1   | Impeller - 375G6-1-1/2                |
|                 | 09929-4.13                       | 1   | Impeller - 20G6-2 & 320G6-2           |
|                 | 09929-4.75                       | 1   | Impeller - 30G6-2 & 330G6-2           |
|                 | 09929-5.38                       | 1   | Impeller - 50G6-2 & 350G6-2           |
|                 | 09929-6.06                       | 1   | Impeller - 375G6-2                    |
|                 | 09929-6.25                       | 1   | Impeller - 3100G6-2                   |
| 15              | 09916                            | 1   | Flat Gasket +                         |
|                 | 22099                            | 1   | O-Ring Gasket - Buna N (Std)          |
|                 | 23000                            | 1   | O-Ring Gasket - Viton                 |
|                 | 23001                            | 1   | O-Ring Gasket - EPT**                 |
|                 | 23002                            | 1   | O-Ring Gasket - Teflon                |
| 16              | 09917                            | 1   | Mechanical Seal - Buna-N (Std)        |
|                 | 09926                            | 1   | Mechanical Seal - Viton               |
|                 | 21271                            | 1   | Mechanical Seal - EPT**               |