

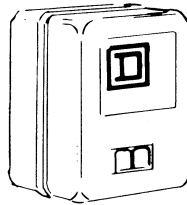
**Depco  
Home**

# INDUSTRIAL ACCESSORIES

## SQUARE D MAGNETIC STARTER

Designed for single and poly-phase motors.

All 3 phase motors require magnetic starters for motor overload protection.



*Catalog Number	MAXIMUM H.P. RATING				NEMA SIZE
	Single Phase		Three Phase		
	115V	230V	230V	460V	
9335	1	2			0
3867	3	5			1P
22017	3	15			2
9336			3		0
9347				5	0
3024			7 <sup>1</sup> / <sub>2</sub>		1
9348				10	1
7406			15		2
9349				25	2
21478			30		3
21479				50	3
21480			50		4
21481				100	4
21482			100		5

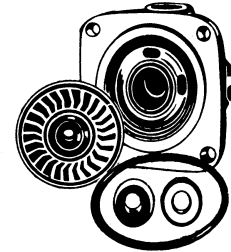
\* Catalog Number includes overloads.

## SPANNER WRENCH

Catalog No. - 7492 - 3/16" pins  
Catalog No. - 7492A - 5/32" pins



For adjusting impeller-raceway clearance on BURKS turbine pumps. Adjusting instructions available on request.



**REPAIR KITS FOR CT/ET & CS/ES SERIES TURBINE PUMPS:** CT/ET Kits includes: Impeller, Raceway, Shaft Seal, Seal Ring, Impeller Locknut and Instructions.

Catalog No.	CT Series	ET Series
20158-5	CT5M Pumps	ET5M Pumps
20158-6	CT6M Pumps	ET6M Pumps
20158-7	CT7M Pumps	ET7M Pumps
20158-8	CT8M Pumps	ET8M Pumps

CS/ES Kit includes: Impeller, Raceway, Shaft Seal, Seal Ring, Suction Sleeve, Impeller Locknut, Raceway Screws, Shaft Key and instructions.

Catalog No.	CS Series	ES Series
20522-5	CS5M Pumps	ES5M Pumps
20522-6	CS6M Pumps	ES6M Pumps
20522-7	CS7M Pumps	ES7M Pumps
20522-8	CS8M Pumps	ES8M Pumps
20522-9	CS9M Pumps	ES9M Pumps

## REPAIR KIT FOR CR SERIES TURBINE PUMPS

CR Kit includes: Impeller, Raceway, Shaft Seal, "O" Ring, Impeller Locknut and instructions.

Catalog No.	CR Series
22850-6	CR6M Pumps
22850-6MV	CR6MV Pumps

## REPAIR KIT FOR E, EC & ED SERIES TURBINE PUMPS:

E, EC & ED Kit includes: Impeller, Raceway and instructions.

Catalog No.	E Series	EC & ED Series
21707-4	E16M	EC4M
21707-5	E17M	EC5M
21707-6	E18M	EC6M
21707-7	E19M	EC7M
21707-8	E20M	EC8M
21707-9	E21M	EC9M
21707-10	E22M	EC10M
21710-8	E23M	ED8M
21710-9	E24M	ED9M
21710-10	E25M	ED10M
21710-11	E26M	ED11M
21710-12	E27M	ED12M
21710-14	E29M	ED14M

SECTION	9
PAGE	2
ISSUED	2/03
REPLACES	12/01



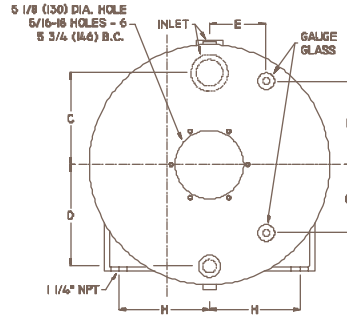
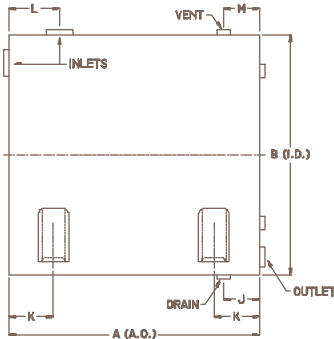
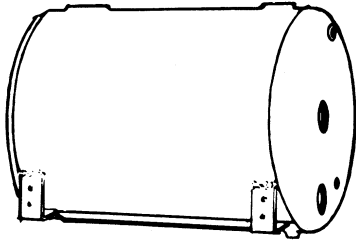
420 Third Street  
Piqua, Ohio 45356-0603  
Phone: (937) 778-8947 Fax: (937) 773-7157

## INDUSTRIAL ACCESSORIES

### HORIZONTAL RECEIVER TANKS

CONDENSATE RECEIVER TANKS ARE DESIGNED FOR GRAVITY RETURN SYSTEMS ONLY, AND ARE NOT TO BE PRESSURIZED. TANKS MUST BE VENTED TO ATMOSPHERE TO PREVENT PRESSURE BUILD UP IN TANK. VENT SIZE SHALL BE 1 1/4" (32mm) MINIMUM.

Tanks are constructed of heavy gauge black steel protected from rust with special metal paint - and are fitted with suitable openings for return lines, water gauges and pump connections. Tanks are regularly furnished with threaded angle lugs designed to accommodate standard 1 1/4" (32mm) pipe supports.



**NOTE: 18" (457mm) diameter tanks require 10" (254mm) water gauge. 24" (610mm) and 30" (762mm) diameter tanks require 16" (406mm) water gauge.**

**DO NOT USE FOR CONSTRUCTION PURPOSES. CERTIFIED DIMENSION DRAWINGS AVAILABLE ON REQUEST.**

Available in the following sizes. DIMENSIONS IN INCHES

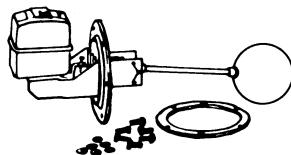
Tank No.	Capacity	A	B	C	D	E	F	G	H	J	K	L	M	NPT TAPPINGS				
														Inlet	Outlet	Vent	Drain	Gauge Glass
7193	20 Gal.	20	18	6 7/8	7 5/8	4 1/4	6 1/4	5 1/8	6 3/4	2 5/8	3 3/8	3 3/4	3 3/4	2	1	1	1	1 1/2
7195	30 Gal.	30	18	6 1/8	6 3/8	4 1/4	6 1/4	5 1/8	6 3/4	2 5/8	8	3 3/4	3 3/4	3	2 1/2	1 1/2	1	1 1/2
7149	60 Gal.	32	24	9 1/8	9 5/8	4 1/4	9 1/8	8 1/4	8 1/2	2 5/8	8	3 3/4	3 3/4	3	2 1/2	1 1/2	1	1 1/2
7189	100 Gal.	52	24	9 1/8	9 5/8	4 1/4	9 1/8	8 1/4	8 1/2	2 5/8	12	3 3/4	3 3/4	3	2 1/2	1 1/2	1	1 1/2
8355	200 Gal.	66	30	12	12 5/8	4 1/4	9 1/8	8 1/4	10 3/4	2 5/8	17	3 3/4	3 3/4	3	2 1/2	1 1/2		1 1/2

Available in the following sizes. DIMENSIONS IN MILLIMETERS

Tank No.	Capacity	A	B	C	D	E	F	G	H	J	K	L	M	NPT TAPPINGS (in inches)				
														Inlet	Outlet	Vent	Drain	Gauge Glass
7193	76 Liters	508	457	175	194	108	159	130	172	67	86	95	95	2	1	1	1	1 1/2
7195	114 Liters	762	457	156	162	108	159	130	172	67	203	95	95	3	2 1/2	1 1/2	1	1 1/2
7149	227 Liters	813	610	232	245	108	232	210	216	67	203	95	95	3	2 1/2	1 1/2	1	1 1/2
7189	379 Liters	1321	610	232	245	108	232	210	216	67	305	95	95	3	2 1/2	1 1/2	1	1 1/2
8355	757 Liters	1676	762	305	321	108	232	210	273	67	432	95	95	3	2 1/2	1 1/2		1 1/2

### DOUBLE POLE FLOAT SWITCH

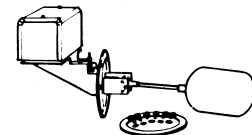
Catalog No. - 7323 for use with Horizontal Receiver Tanks. This switch does not provide overload protection.



Electrical Ratings			
Volts	1 Phase	3 Phase	D.C.
110/115	2 HP	3 HP	1 HP
208/230	3 HP	3 HP	1 HP
440/600	5 HP	3 HP	---
32	---	---	1/2 HP

### MECHANICAL ALTERNATOR SWITCH

For Duplex Installation Catalog No. - 7994 for duplex condensation return installations with horizontal tanks. This switch does not provide overload protection.



Electrical Ratings			
Volts	1 Phase	3 Phase	D.C.
110/115	1 1/2 HP	2 HP	1 1/2 HP
208/230	2 HP	3 HP	1 1/2 HP
440/550	---	1 HP	---
600	Pilot Duty	Pilot Duty	Pilot Duty
32	---	---	1/4 HP



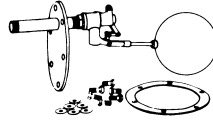
PUMPS & SYSTEMS

A Crane Co. Company

## INDUSTRIAL ACCESSORIES

### MAKE-UP VALVES FOR HORIZONTAL TANKS

This type Make-up Valve is furnished complete as shown, with mounting flange, nipple, rod, copper float and bronze valve. Two sizes are available, 1/2" (13mm) and 3/4" (19mm). Below is table indicating delivery in gallons per hour at various pressures with valve fully open.



Pressure PSI (kpa)	Catalog No. 7324 1/2" (13mm) Valve GPH (LPM)	Catalog No. 7148 3/4" (19mm) Valve GPH (LPM)
10 (69)	255 (965)	2100 (7949)
20 (138)	350 (1325)	2390 (9047)
30 (207)	425 (1609)	2800 (10599)
40 (276)	490 (1855)	3900 (14763)

Where pressure is more than 40 lbs. (276kpa), pressure regulating valve should also be installed.

### WATER GAUGES

Cast bronze fittings and brass guard rods. Lengths 10" (254mm) and 16" (406mm). For 1/2" pipe tapping.

Catalog No.	Length A in inches (mm)	Glass Length in inches (mm)
7175	11 <sup>3</sup> / <sub>8</sub> " (289)	10 (254)
7178	17 <sup>3</sup> / <sub>8</sub> " (441)	16 (406)



### STRAINER

Furnished with bronze screen. Cap on bottom of strainer easily removed to inspect and clean screen. Tapping provided for vacuum gauge.

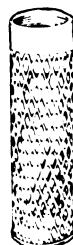


Catalog No.	Size (NPT)
7182	1"
7182A (brass)	1"
7183	1 <sup>1</sup> / <sub>2</sub> "
7183A (brass)	1 <sup>1</sup> / <sub>2</sub> "
7184	2 <sup>1</sup> / <sub>2</sub> "
7184 (brass)	2 <sup>1</sup> / <sub>2</sub> "

### STRAINER

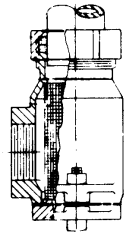
Catalog No. - 20692

Cadmium plated steel strainer for suction line. Included with each GWT5A Engine Driven Pump. For 2" NPT pipe.



### COMPRESSION STRAINER

Furnished with compression type adapter for suction piping. Eliminates thread cutting, expensive fittings and cuts installation time. Cap on bottom of strainer easily removed to inspect and clean screen.

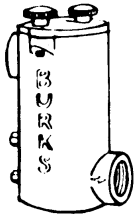


Catalog No.	Size (NPT)
8872	1"
9194	1 <sup>1</sup> / <sub>2</sub> "

### LINT STRAINER

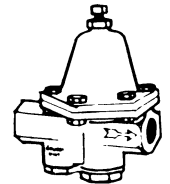
Catalog No. - 5465 size 1<sup>1</sup>/<sub>2</sub>"

No. 8 mesh, type 303 stainless steel strainer basket is enclosed in aluminum case. 1/4" tapping provided for vacuum gauge connection. For use only on suction side of pump. 25 psi (172kpa) maximum inlet pressure.



### PRESSURE REGULATING VALVE

This Pressure Reducing and Regulating Valve is recommended on all BURKS Boiler Feed units where the (city) water pressure exceeds 40 pounds (276kpa) in order to insure satisfactory operation of float controlled make-up valve in receiver tank.



An all bronze valve, having a yoke design, that make extremely tight closing valve and produces greater volume at normal pressures. Available in two sizes, 1/2" and 3/4". It is designed for inlet pressure as high as 250 pounds per square inch (1724kpa) and delivery pressures ranging from 10 pounds per square inch (69kpa) to 150 pounds per square inch (1034kpa). Valves shown for outlet pressure ranges of 15 psi (103kpa) - 85 psi (586kpa). Set at 45 psi (310). Flow at 40 psi (276kpa) differential:  
 1/2" valve 9 gpm (0.5 lps) --- 3/4" valve 15 gpm (0.9 lps)

Cat. No.	Size (NPT)	Length inches (mm)	Ht. inches (mm)	Width inches (mm)
7266	1/2"	5 (127)	5 (127)	4 (102)
7267	3/4"	5 <sup>1</sup> / <sub>2</sub> (140)	7 (178)	4 <sup>1</sup> / <sub>2</sub> (114)

SECTION	9
PAGE	4
ISSUED	2/03
REPLACES	12/01



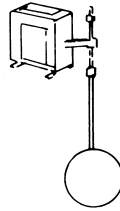
420 Third Street  
Piqua, Ohio 45356-0603  
Phone: (937) 778-8947 Fax: (937) 773-7157

## INDUSTRIAL ACCESSORIES

### FLOAT SWITCH

Catalog No. - 7172

Two-pole type float switch. Contacts open on liquid rise. Can be adjusted for reverse operation. Includes:  
1549 Switch,  
3152 6" (152mm) Float Ball,  
1547 60" (1524mm) Rod, and hardware.



H.P. RATINGS			
Volts	1 Phase	2 or 3 Phase	DC
115	2	3	1
230	3	5	1
460/575	5	5	---
32	---	---	1/2

### PRESSURE RELIEF VALVE

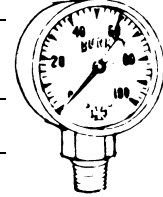
Brass "pop-off" type pressure relief valve.  
(Not for use as a by-pass valve.)



Catalog No.	Size (NPT)	Valve Set PSI (kpa)	Adj. Range PSI (kpa)	Max. Flow Rate
234	1/2	65 (448)	15-125 (103-862)	24 GPM (1.5 LPS)
1904	3/4	65 (448)	10-150 (69-1034)	27 GPM (1.7 LPS)
1906	3/4	115 (793)	10-150 (69-1034)	27 GPM (1.7 LPS)
1907	1	65 (448)	10-150 (69-1034)	30 GPM (1.9 LPS)
1908	1	85 (586)	10-150 (69-1034)	30 GPM (1.9 LPS)
1909	1	115 (793)	10-150 (69-1034)	30 GPM (1.9 LPS)

### PRESSURE GAUGES

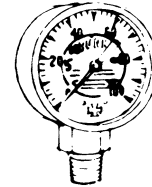
Catalog No.	Description
2280	2" (51mm) Gauge 100 psi (690 kpa). 1/4" Standard Pipe Threads.
3934	Same as above except with connection on back.
7196	3 1/2" (89mm) Gauge 200 psi (1379 kpa). 1/4" Standard Pipe Threads.



### VACUUM GAUGE

Catalog No. - 1893

A 2 1/2" (64mm) gauge which has double scale showing inches of vacuum in black figures and equivalent suction lift in feet in red figures. Has 1/4" standard pipe threads.



### TOUCH-UP ENAMEL

Catalog No. - 21877, 13 oz. can

Convenient aerosol can of BURKS green enamel for touch-ups or refinishing BURKS pumps.

