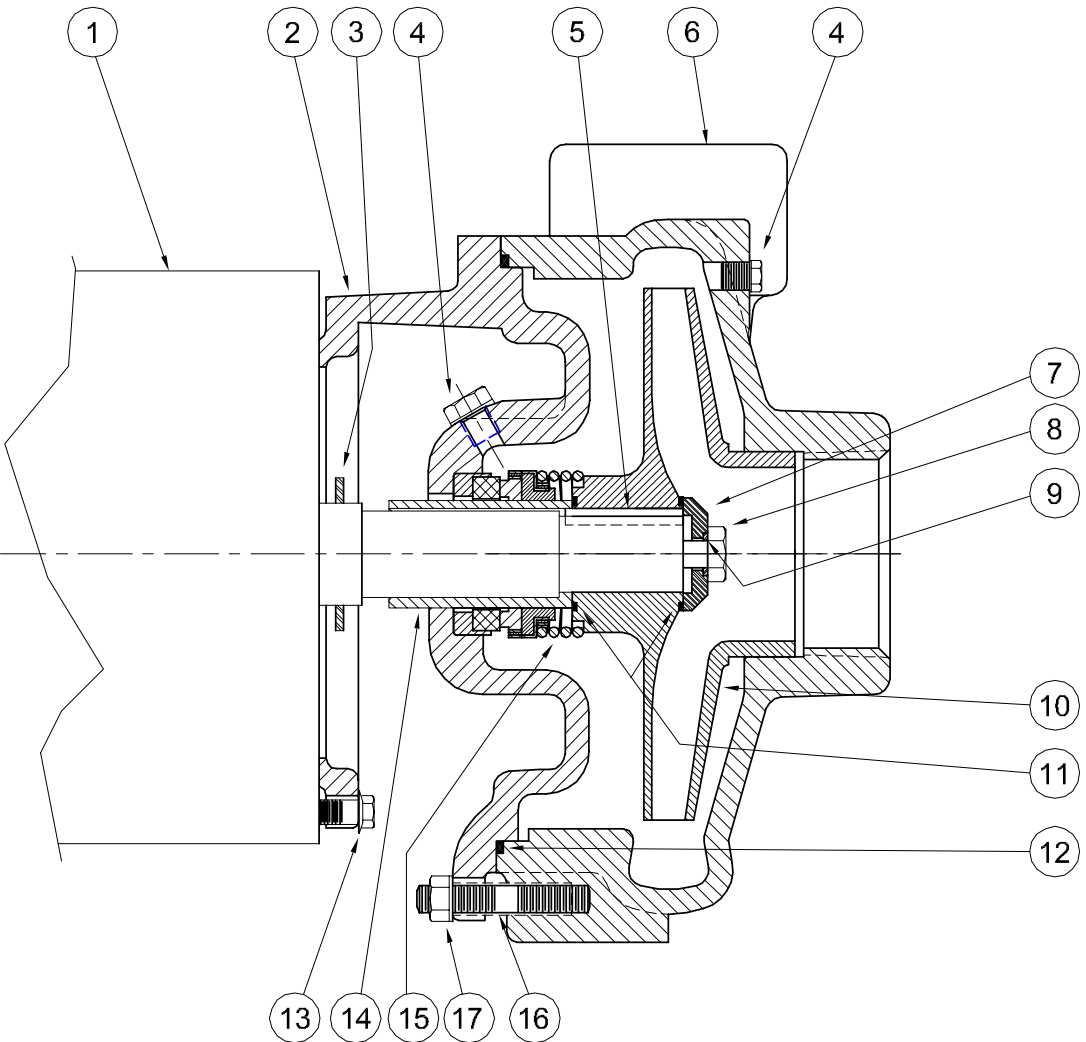


Centrifugals - Close Coupled



1 - MOTORS				
RPM & PHASE	PART NUMBER	HP	FRAME SIZE	
OPEN DRIP PROOF				
1750 RPM Single Phase (ODP)	21393	1	143JM	
	21394	1½	145JM	
1750 RPM Three Phase (ODP)	21419	1	143JM	
	21420	1½	145JM	
3500 RPM Single Phase (ODP)	09899	1½	143JM	
	09900	2	145JM	
	09901	3	182JM	
	09902	5	184JM	
3500 RPM Three Phase (ODP)	09903	1½	143JM	
	09904	2	145JM	
	09905	3	145JM	
	09906	5	182JM	
	09907	7½	184JM	
	TOTALLY ENCLOSED			
	1750 RPM Single Phase (TEFC)	21399	1	143JM
21400		1½	145JM	
21401		2	182JM	
1750 RPM Three Phase (TEFC)	21426	1	143JM	
	21427	1½	145JM	
	21428	2	145JM	
3500 RPM Single Phase (TEFC)	21880	2	145JM	
	21881	3	182JM	
	23990B	5	184JM	
3500 RPM Three Phase (TEFC)	09948	2	145JM	
	09947	3	182JM	
	09950	5	184JM	
	075-231-382-08	7½	184JM	
EXPLOSION PROOF				
1750 RPM Three Phase (XP)	21433	1	143JM	
	21434	1½	145JM	
	21435	2	145JM	
3500 RPM Three Phase (XP)	09952	2	145JM	
	09953	3	182JM	
	09954	5	184JM	

SECTION CCCP
PAGE 10
DATE 2/05



A Crane Co. Company

PUMPS & SYSTEMS

USA: (937) 778-8947 • Canada: (905) 457-6223 • International: (937) 615-3598

SYMBOL NUMBER	PART NUMBER	QTY	DESCRIPTION
13	21236	4	Cap Screw
14	22063-C	1	Shaft Sleeve - Bronze
15	09917	1	Mechanical Seal - Buna-N (Std)
	09926	1	Mechanical Seal - Viton
	21271	1	Mechanical Seal - EPDM**
16	23905	4	Stud
17	23906	4	Nut
DIFFERING PARTS FOR ALL BRONZE CONSTRUCTION			
2	22002-A	1	Adapter - Bronze
4	01691-A	2	Pipe Plug 1/8" Bronze
6	23910-A	1	Casing - Bronze - GA6-1-1/2
	23911-A	1	Casing - Bronze - GA6-2
8	03289	1	Cap Screw - Bronze
DIFFERING PARTS FOR ALL IRON CONSTRUCTION			
4	00158	2	Pipe Plug 1/8" Steel
7	22105-A	1	Washer - Steel
10	09928-A	1	Impeller - GA6-1-1/2*
	09929-A	1	Impeller - GA6-2*
14	22063-A	1	Shaft Sleeve - SS

(*) Size suffixes same as standard bronze impellers.

(**) For hot water or Caustic service.

SYMBOL NUMBER	PART NUMBER	QTY	DESCRIPTION
2	22002 22002-1	1 1	Adapter Adapter - Tapped
3	09918	1	Slinger Washer
4	00158	2	Pipe Plug - 1/8" Bronze
5	23014	1	Key
6	23910	1	Casing - GA6-1-1/2
	23911	1	Casing - GA-2
7	22105-C	1	Washer - Bronze
8	1-529-1	1	Cap Screw - SS
9	22080	1	O-Ring Gaskey - Buna-N (Std)
	2-31005-012	1	O-Ring Gasket - Viton
	22093	1	O-Ring Gasket - EPDM**
	22082	1	O-Ring Gasket - Teflon
	1750 RPM		
	09928-6.13	1	Impeller - 104GA6-1-1/2 & 3104GA6-1-1/2
	09929-5.94	1	Impeller - 104GA6-2 & 3104GA6-2
	09929-6.25	1	Impeller - 154GA6-2 & 3154GA6-2
	3500 RPM		
	09928-4.00	1	Impeller - 15GA6-1-1/2 & 315GA6-1-1/2
	09928-4.38	1	Impeller - 20GA6-1-1/2 & 320GA6-1-1/2
	09928-5.00	1	Impeller - 30GA6-1-1/2 & 330GA6-1-1/2
	09928-5.69	1	Impeller - 50GA6-1-1/2 & 350GA6-1-1/2
	09928-6.25	1	Impeller - 375GA6-1-1/2
	09929-4.38	1	Impeller - 30GA6-2 & 330GA6-2
	09929-5.13	1	Impeller - 50GA6-2 & 350GA6-2
	09929-5.88	1	Impeller - 375GA6-2
11	22083	2	O-Ring Gasket - Buna-N (Std)
	22084	2	O-Ring Gasket - Viton
	22094	2	O-Ring Gasket - EPDM**
	22085	2	O-Ring Gasket - Teflon
12	2-31003-166	1	O-Ring Gasket - Buna-N (Std)
	2-31005-166	1	O-Ring Gasket - Viton
	22098	1	O-Ring Gasket - EPDM**
	22097	1	O-Ring Gasket - Teflon

CRANE®

PUMPS & SYSTEMS