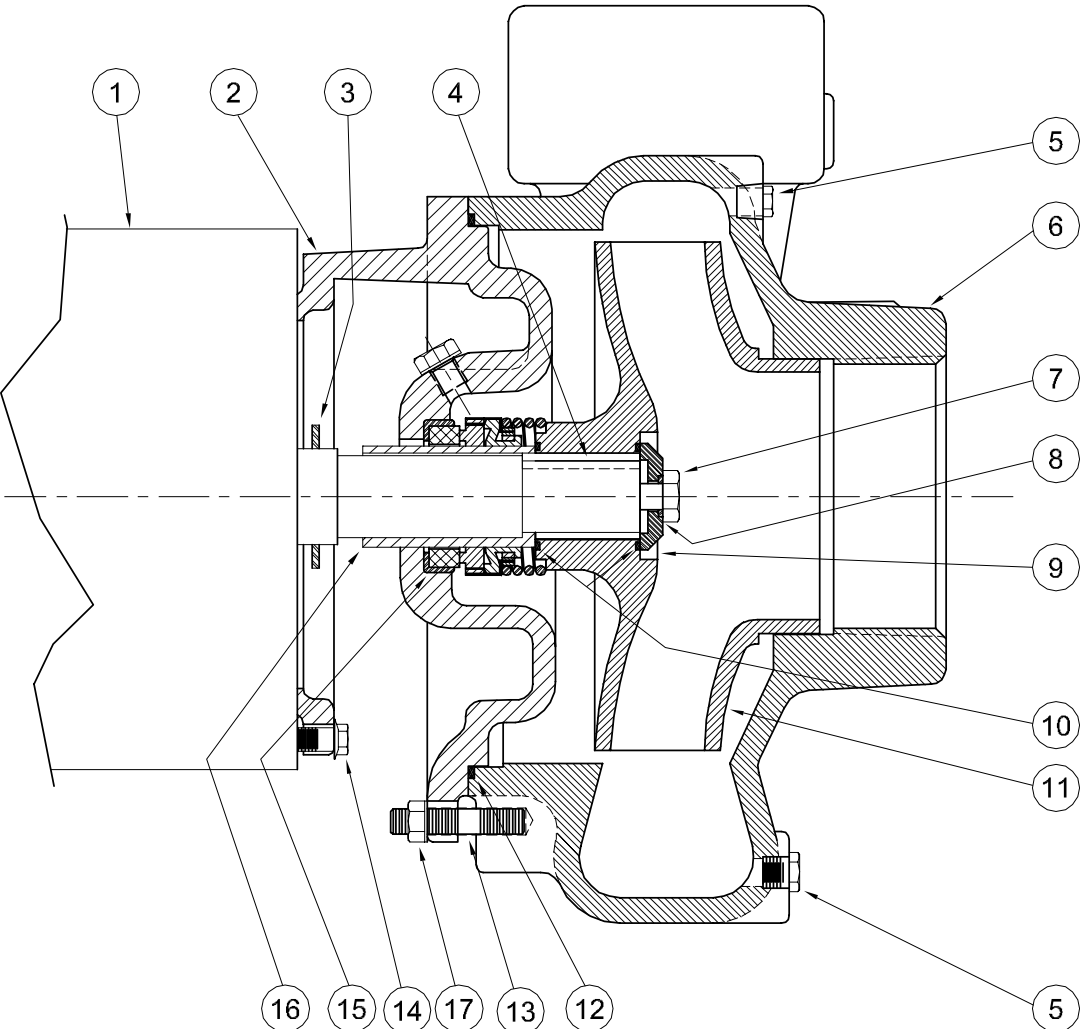


*Centrifugals - Close Coupled*



| 1 - MOTORS                         |             |    |            |
|------------------------------------|-------------|----|------------|
| RPM & PHASE                        | PART NUMBER | HP | FRAME SIZE |
| <b>OPEN DRIP PROOF</b>             |             |    |            |
| 1750 RPM<br>Single Phase<br>(ODP)  | 21393       | 1  | 143JM      |
|                                    | 21394       | 1½ | 145JM      |
|                                    | 21395       | 2  | 182JM      |
|                                    | 21396       | 3  | 184JM      |
| 1750 RPM<br>Three Phase<br>(ODP)   | 21419       | 1  | 143JM      |
|                                    | 21420       | 1½ | 145JM      |
|                                    | 21421       | 2  | 182JM      |
|                                    | 21422       | 3  | 184JM      |
| <b>TOTALLY ENCLOSED</b>            |             |    |            |
| 1750 RPM<br>Single Phase<br>(TEFC) | 21399       | 1  | 143JM      |
|                                    | 21400       | 1½ | 145JM      |
|                                    | 21401       | 2  | 182JM      |
|                                    | 21402       | 3  | 184JM      |
| 1750 RPM<br>Three Phase<br>(TEFC)  | 21426       | 1  | 143JM      |
|                                    | 21427       | 1½ | 145JM      |
|                                    | 21428       | 2  | 145JM      |
|                                    | 21429       | 3  | 182JM      |
| <b>EXPLOSION PROOF</b>             |             |    |            |
| 1750 RPM<br>Three Phase<br>(XP)    | 21433       | 1  | 143JM      |
|                                    | 21434       | 1½ | 145JM      |
|                                    | 21435       | 2  | 145JM      |
|                                    | 21436       | 3  | 182JM      |

| SYMBOL NUMBER                            | PART NUMBER | QTY | DESCRIPTION           |
|--|-------------|-----|-----------------------|
| <b>DIFFERING PARTS FOR BRONZE FITTED</b> |             |     |                       |
| 7  | 03289       | 1   | Cap Screw             |
| 9  | 22105-C     | 1   | Washer - Alum. Bronze |
| 11                                       | 23064-A     | 1   | Impeller              |
| 16                                       | 22063-C     | 1   | Shaft Sleeve          |
| <b>DIFFERING PARTS FOR ALL BRONZE</b>    |             |     |                       |
| 2  | 22002-A     | 1   | Adapter               |
| 4  | 01691-A     | 3   | Plug                  |
| 6  | 23909-A     | 1   | Casing                |
| 7  | 03289       | 1   | Cap Screw             |
| 9  | 22105-C     | 1   | Washer, Alum. Bronze  |
| 11                                       | 23064-A     | 1   | Impeller              |
| 16                                       | 22063-C     | 1   | Shaft Sleeve          |

(\*\*) For hot water or Caustic service.

| SYMBOL NUMBER | PART NUMBER | QTY | DESCRIPTION                                 |
|---------------|-------------|-----|---|
| 2             | 22002       | 1   | Adapter                                     |
| 3             | 09918       | 1   | Slinger Washer                              |
| 4             | 23014       | 1   | Key   |
| 5             | 00158       | 3   | Pipe Plug - 1/8"                            |
| 6             | 23909       | 1   | Casing                                      |
| 7             | 1-529-1     | 1   | Cap Screw - SS                              |
| 8             | 22080       | 1   | O-Ring Gasket - Buna-N (Std)                |
|               | 2-31005-012 | 1   | O-Ring Gasket - Viton                       |
|               | 22093       | 1   | O-Ring Gasket - EPDM**                      |
| 9             | 22105-A     | 1   | Washer - Steel                              |
| 10            | 22083       | 2   | O-Ring Gasket - Buna-N (Std)                |
|               | 22084       | 2   | O-Ring Gasket - Viton                       |
|               | 22094       | 2   | O-Ring Gasket - EPT**                       |
| 11            | 23064-4.88  | 1   | Impeller - 104DF6-2-1/2AI & 3104DF6-2-1/2AI |
|               | 23064-5.44  | 1   | Impeller - 154DF6-2-1/2AI & 3154DF6-2-1/2AI |
|               | 23064-5.81  | 1   | Impeller - 204DF6-2-1/2AI & 3204DF6-2-1/2AI |
|               | 23064-6.25  | 1   | Impeller - 304DF6-2-1/2AI & 3304DF6-2-1/2AI |
| 12            | 2-31003-166 | 1   | O-Ring Gasket - Buna-N (Std)                |
|               | 2-31005-166 | 1   | O-Ring Gasket - Viton                       |
|               | 22098       | 1   | O-Ring Gasket - EPT**                       |
| 13            | 23905       | 4   | Stud  |
|               | 23906       | 4   | Hex Nut                                     |
| 14            | 21236       | 4   | Cap Screw                                   |
| 15            | 09917       | 1   | Mechanical Seal - Buna-N (Std)              |
|               | 09926       | 1   | Mechanical Seal - Viton                     |
|               | 21271       | 1   | Mechanical Seal - EPT**                     |
| 16            | 22063-A     | 1   | Shaft Sleeve - SS                           |

# CRANE®

## PUMPS & SYSTEMS