



Vertical Sealless Sprayer / Washer Pumps

- **Cast Iron Construction with Investment Cast 316 Stainless Steel Impeller**
- **Stainless Steel Pump Shaft**
- **No Bottom Bearing!!**
- **Handles Viscosities up to 100 SSU**
- **Dual Volute Design Reduces Radial Load on Motor**
- **Maximum Temperature 200° F**
- **Maximum Flow 160 GPM**
- **Maximum Head 160 Ft. (70 PSI)**
- **Stainless Steel Suction Screen**
- **Includes Heavy Duty Universal Mounting Plates**
- **3 HP to 10 HP Totally Enclosed Fan Cooled (TEFC) Motors Available**
- **Standard 56C or JM Shaft Motors**

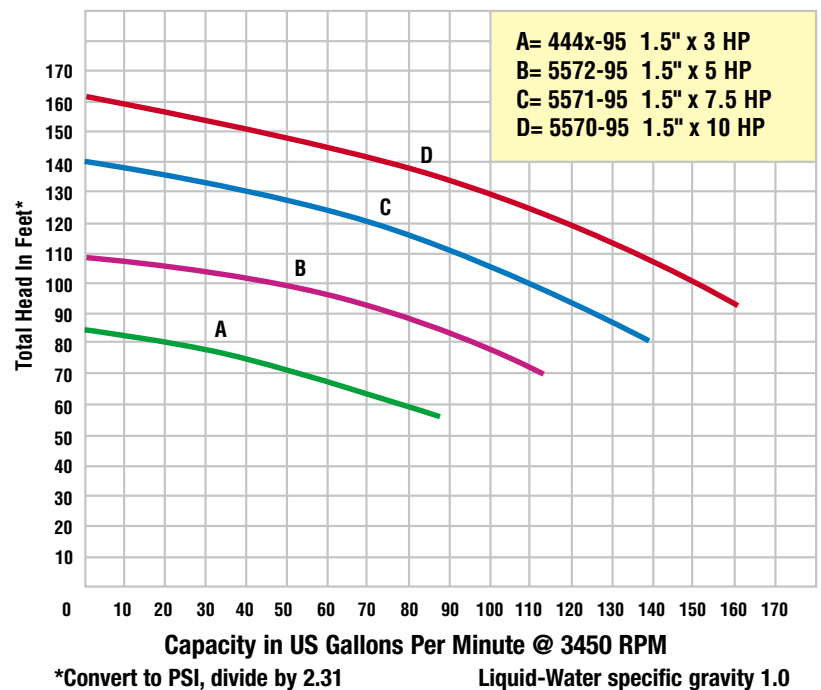
AMT Vertical Sealless Sprayer/Washer pumps are designed for OEM, automotive and industrial washing machines, parts cleaners, spray booths and cooling towers. "No bottom bearing" design and **316 Stainless Steel** impeller resists erosion from abrasives and ensures a long, maintenance free life for the pump. CNC machined stainless steel pump shafts. Built in stainless steel suction screen protects pump from clogging and damage caused by large solids. Heavy duty universal mounting plates permit easy installation into existing tanks, booths, equipment, etc.

For use with nonflammable liquids compatible with pump component materials.

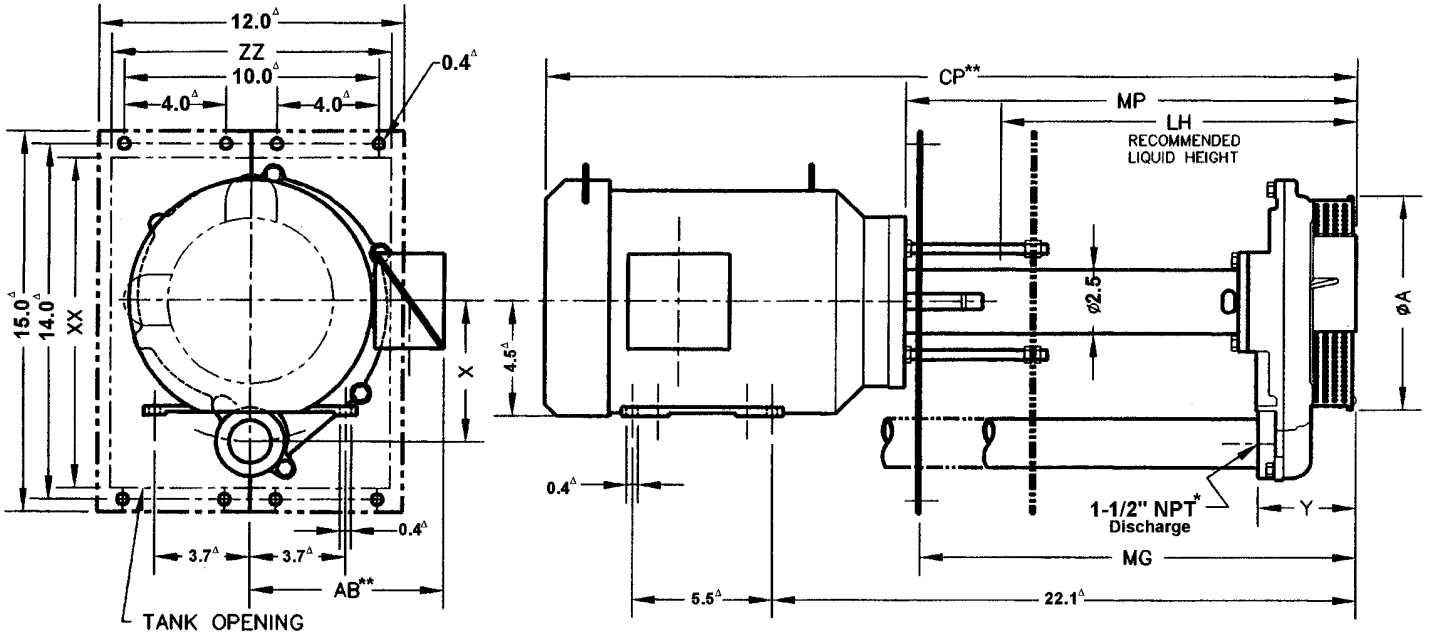


Model 5570-95

Performance of Vertical Sprayer/Washer Pumps



Vertical Sealless Sprayer / Washer Pumps



Pump Dimensional & Specification Data

Model No.	HP	PH ⁺	NEMA Frame	ENC	A	AB ^{**}	CP ^{**}	LH	MP	X	XX	Y	ZZ	MG	Ship Wt.
4445-95	3	1	56C	TEFC	6.5	4.8	29.7	13.5	17.0	4.8	12.0	3.5	10.0	16.0	78 Lbs.
4446-95	3	3	56C	TEFC	6.5	4.8	29.7	13.5	17.0	4.8	12.0	3.5	10.0	16.0	73 Lbs.
5570-95	10	3	184JM	TEFC	8.4	7.5	32.0	14.0	17.8	5.5	13.0	4.0	11.0	17.0	165 Lbs.
5571-95	7.5	3	184JM	TEFC	8.4	7.5	32.0	14.0	17.8	5.5	13.0	4.0	11.0	17.0	150 Lbs.
5572-95	5	3	184JM	TEFC	8.4	7.5	32.0	14.0	17.8	5.5	13.0	4.0	11.0	17.0	130 Lbs.

(Δ) Does not apply to Models 4445-95 & 4446-95

(*) Standard NPT (female) pipe thread.

(**) This dimension may vary due to motor manufacturer's specifications.

(+) 3-Phase models can also operate on 50 Hz (This will change Full Load Amps, Service Factor and RPM).

NOTE: Dimensions have a tolerance of $\pm 1/8"$.

NOTE: Electric supply for **ALL** motors must be within $\pm 10\%$ of nameplate voltage rating (e.g. 230V $\pm 10\%$ = 207 to 253).

Standard Features

- > Cast Iron Construction with Investment Cast 316 Stainless Steel Impeller
- > Stainless Steel Pump Shaft
- > *No Bottom Bearing!!*
- > Handles Viscosities up to 100 SSU
- > Maximum Temperature 200° F
- > Maximum Flow 160 GPM
- > Maximum Head 160 Ft. (70 PSI)
- > Stainless Steel Suction Screen
- > Includes Heavy Duty Universal Mounting Plates
- > Standard 56C or JM Shaft Motors



400 Spring Street
 Royersford, PA 19468
 (610) 948-3800 Fax (610) 948-5300
 E-mail: amt@fast.net
 www.amtpump.com

AMT reserves the right to discontinue any model or change specifications at any time without incurring any obligation.

557X-CP / 0901