

Please read and save these instructions. Read carefully before attempting to assemble, install, operate or maintain the product described. Protect yourself and others by observing all safety information. Failure to comply with instructions could result in personal injury and/or property damage! Retain instructions for future reference.

# Basket Strainer

## Description

This basket strainer is designed for use with pump models series 388, and other pumps with 1½" suction inlets where a strainer is desired. With basket strainer attached, these pumps become highly efficient swimming pool pumps or filter pumps that can be matched to a wide variety of swimming pool filters.

This Basket Strainer kit also makes these pumps suitable for a wide variety of applications in any areas where a built-in filter basket may be needed.

**⚠ CAUTION** *DO NOT use basket strainer in applications where basket is subject to positive gauge pressure in excess of 5 psi.*

## Unpacking

When unpacking the basket strainer, inspect carefully for any damage that may have occurred during transit. Check for loose, missing and damaged parts.

## Specifications

Inlet. . . . . 1½" NPT (female)  
 Outlet. . . . . 1½" NPSC (male)  
 Max. temp. . . . . 140°F  
 Dimensions. . . . . 11.1"H x 7.5"W

## Basic Construction

Basket & housing . . . . . ABS  
 Cover. . . . . Polycarbonate  
 O-ring . . . . . Teflon-coated Buna

## Assembly

1. If pump is already installed in a system, disconnect power supply and remove suction piping.
2. With small O-ring (Ref. No. 1) in place on strainer basket housing (Ref. No. 2), thread male threads of the housing into the suction inlet. Turn basket until O-ring seals. **DO NOT OVERTIGHTEN.** Rotate so the large opening of the basket housing is at the top.
3. Insert strainer basket (Ref. No. 3) into the housing so the lip of the basket is resting on the small shoulder inside the housing.

4. Place housing cover (Ref. No. 5) on housing with large O-ring (Ref. No. 4) in place and turn cover clockwise until it is seated firmly. Lubricate cover o-ring with mineral oil before use.
5. Install suction piping. Use pipe tape or pipe dope to assure an airtight seal at this connection.

**⚠ CAUTION** *DO not overtighten suction pipe connection. Damage to strainer housing may result.*

*Proper assembly is hand-tight plus 1½ revolutions maximum. Use only a sealant which is compatible with plastic, such as Teflon® Tape.*

**For Repair Parts, contact dealer where unit was purchased.**

Please provide following information:

- Model number
- Serial number (if any)
- Part description and number as shown in parts list

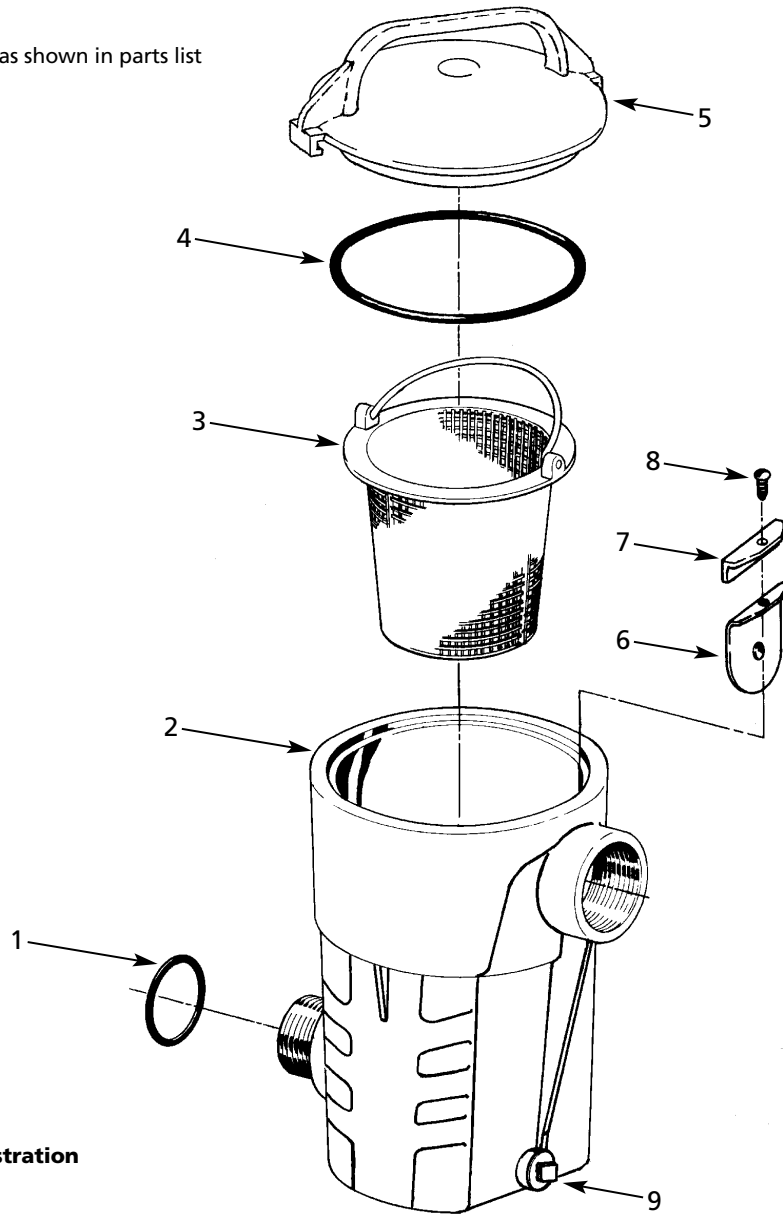


Figure 1 – Repair Parts Illustration

**Repair Parts List**

Reference Number	Description	Part Number
1	O-ring	2104-007-00
2	Strainer basket housing	2104-008-00
3	Strainer basket	2104-009-00
4	Cover O-ring	2104-010-00
5	Cover	2104-011-00
6	Flapper valve	2104-012-00
7	Flapper valve clamp	2104-013-00
8	Fastener	*
9	Drain plug	2104-023-00

(\*) Standard hardware item, available locally.