

## 2" & 3" Engine Driven Self-Priming Trash Pumps

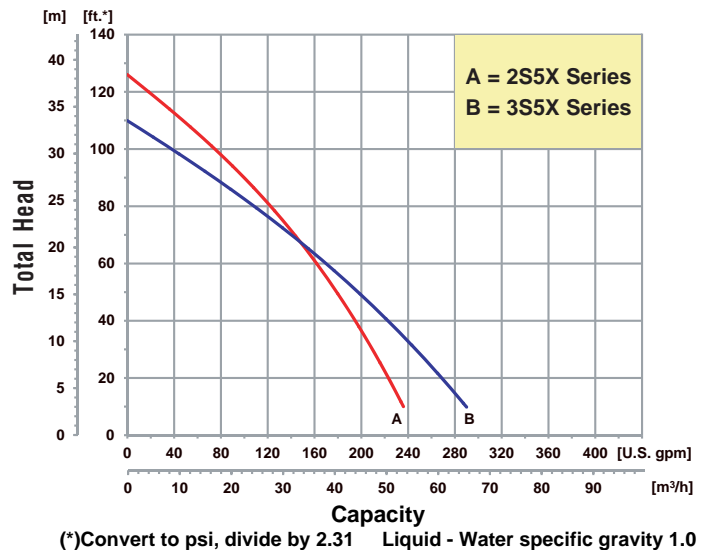


Model  
2S5XHR

- **Cast Aluminum with Cast Iron Wearparts**
- **Silicon Carbide/Viton® Mechanical Seal**
- **EPDM/EPR O-Rings Standard with Optional Viton®**
- **2" or 3" Removable Male NPT Suction and Discharge Ports**
- **Discharge Rotates in 90° Increments**
- **Engine Options: Honda, B & S Vanguard Gasoline or Hatz Diesel Engines**
- **Easy Clean Out with One Tool Serviceability**
- **Maximum Solids Handling up to 1-1/4"**
- **Maximum Flow up to 290 GPM**
- **Maximum Head up to 125 Ft.**
- **Self-Priming to 26 Ft.**
- **Wheel Kit Optional**

IPT Portable High Volume, Self-priming Centrifugal Trash pumps come standard with a cast iron impeller to resist abrasion and **one tool serviceability** for easy cleanout. All pumps feature aluminum housing, cast iron wearparts, built-in check valve, suction strainer and heavy duty steel roll frame. Heavy duty cast iron flanges with male NPT threads that rotates in 90° increments. Easy access fill plug on discharge port.

Performance of Engine Driven Self-Priming Trash Pumps





# Engine Driven Self-Priming Trash Pumps

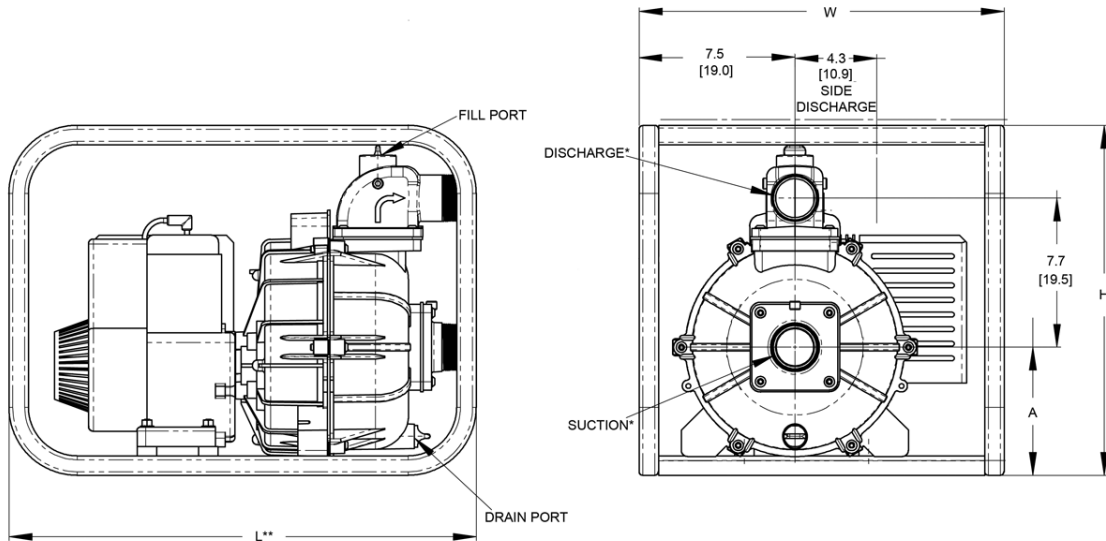
## 2" Trash Pumps

| Model  | HP Class <sup>♦</sup> | Curve | Port   | Driver                      | Seal                         | Run Time (Hours) | Tank Size (Gal/Ltr.) | Ship Wt. (Lbs.) |
|--------|-----------------------|-------|--------|-----------------------------|------------------------------|------------------|----------------------|-----------------|
| 2S5XAR | 5 HP                  | A     | 2" NPT | B & S Vanguard <sup>▲</sup> | Viton <sup>®</sup> / SIC-SIC | 1.3              | 0.87/3.3             | 90              |
| 2S5XHR | 5 HP                  | A     | 2" NPT | Honda GX160 <sup>▲</sup>    | Viton <sup>®</sup> / SIC-SIC | 2.0              | 0.82/3.1             | 90              |
| 2S5XZR | 5 HP                  | A     | 2" NPT | Hatz Diesel 1B20            | Viton <sup>®</sup> / SIC-SIC | 2.7              | 0.79/3.0             | 115             |

**Construction: Cast Aluminum with Cast Iron Components**

**Maximum Solids Handling Capacity: 1" Diameter**

(<sup>♦</sup>) HP Class represents market category and is not intended to define actual horsepower.



## 3" Trash Pumps

| Model  | HP Class <sup>♦</sup> | Curve | Port   | Driver                      | Seal                         | Run Time (Hours) | Tank Size (Gal/Ltr.) | Ship Wt. (Lbs.) |
|--------|-----------------------|-------|--------|-----------------------------|------------------------------|------------------|----------------------|-----------------|
| 3S5XAR | 5 HP                  | B     | 3" NPT | B & S Vanguard <sup>▲</sup> | Viton <sup>®</sup> / SIC-SIC | 1.3              | 0.87/3.3             | 100             |
| 3S5XHR | 5 HP                  | B     | 3" NPT | Honda GX160 <sup>▲</sup>    | Viton <sup>®</sup> / SIC-SIC | 2.5              | 0.82/3.1             | 100             |
| 3S5XZR | 5 HP                  | B     | 3" NPT | Hatz Diesel 1B20            | Viton <sup>®</sup> / SIC-SIC | 2.7              | 0.79/3.0             | 120             |

**Construction: Cast Aluminum with Cast Iron Components**

**Maximum Solids Handling Capacity: 1 1/4" Diameter**

(<sup>♦</sup>) HP Class represents market category and is not intended to define actual horsepower.

<sup>▲</sup> Oil Alert Included

| Model       | DIS* | SUC* | L**         | W**         | H           |
|-------------|------|------|-------------|-------------|-------------|
| 2S5X Series | 2    | 2    | 24.0 [60.9] | 19.5 [49.5] | 19.9 [50.5] |
| 3S5X Series | 3    | 3    | 24.0 [60.9] | 19.5 [49.5] | 19.9 [50.5] |

| Model              | A          |
|--------------------|------------|
| Gas - 2S5X/3S5X    | 7.4 [18.7] |
| Diesel - 2S5X/3S5X | 7.9 [20.0] |

### 5/8" Threaded Pump Kit - Cast Aluminum

| Model* | Seal Type & Elastomer/Faces  | Mounting | Ship Wt. (Lbs.) |
|--------|------------------------------|----------|-----------------|
| 2S5X   | Viton <sup>®</sup> / SIC-SIC | Handle   | 40              |
| 3S5X   | Viton <sup>®</sup> / SIC-SIC | Handle   | 45              |

(\*) Standard NPT (Male) Pipe Thread.

(\*\*) This dimension may vary due to engine manufacturer's specifications.

NOTE: Dimensions are in inches (centimeters) and have a tolerance of  $\pm 1/8"$ .

\*Does not include roll cage or engine, unassembled

## Standard Features

- Cast Iron Impeller
- One Tool Serviceability Tool Included with Engine Driven Models
- Silicon Carbide Mechanical Seal with Graphite Impregnated Seat and Viton<sup>®</sup> Elastomers
- Heavy Duty Steel Roll Frame and Strainer Included
- Built-in EPDM/EPR Check Valve
- Removable/Replaceable Cast Iron Suction/Discharge Ports
- Discharge Port Rotates in 90° Increments
- Choice of Honda, B & S Vanguard Gasoline or Hatz Diesel Engine
- Vibration Dampening Feet
- Maximum Temperature 180° F
- Optional Viton<sup>®</sup> O-ring / Check Valve Available
- Pedestal Version Available
- Optional Wheel Kit Available
- QSP – Quick Ship Pumps for Many Models



**Manufacturer of AMT & IPT Pumps**

400 Spring Street • Royersford, PA 19468 USA

[www.amtpump.com](http://www.amtpump.com) • 888-amt-pump (268-7867)

The Gorman-Rupp Company reserves the right to discontinue any model or change specifications at any time without incurring any obligation. ©2012 American Machine and Tool Company. All rights reserved.

