



## Straight Centrifugal Pumps

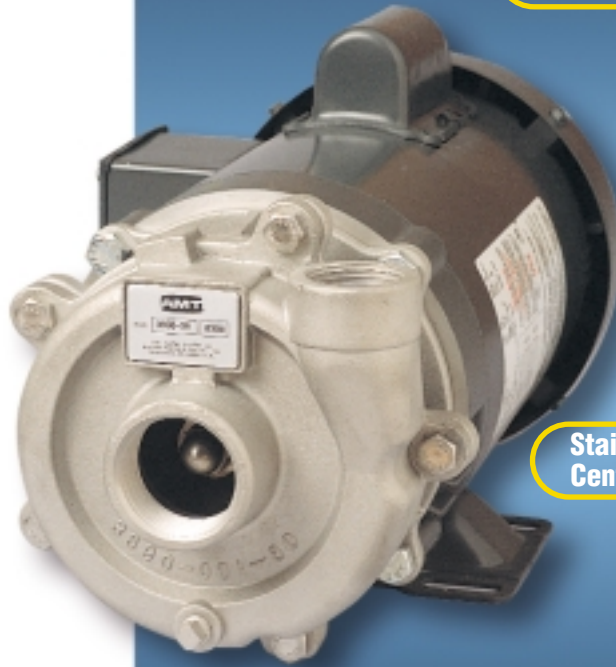
- Available in : Investment Cast 316 Stainless Steel, Cast Bronze and Cast Iron with Stainless Steel Impeller Construction
- Viton® Mechanical Seal and O-Ring with Stainless Steel and Bronze Models
- Buna N Mechanical Seal and O-Ring with Cast Iron Models
- Optional Silicon Carbide Mechanical Seals Available
- Discharge Port Rotates in 90° Increments
- Maximum Working Pressure 75 PSI
- Max. Temperature 200°F
- Max. Flow 90 GPM
- Max. Head 65 Ft. (28 PSI)
- Self-cleaning, Semi-open Impellers
- Available with Open Drip Proof (ODP) or Totally Enclosed Fan Cooled (TEFC) 56J Motors
- 1/3 HP to 2 HP Single and Three Phase, 3450 RPM Motors

This line of AMT Straight Centrifugal pumps is designed for continuous-duty low pressure OEM, Industrial/Commercial and General Service applications including circulation, chemical processing, liquid transfer and cooling. These durable and compact pumps are available in a variety of construction and seal materials to meet your specification. The line also features a wide selection of single and three phase ODP or TEFC motors, up to 2 horsepower. All models feature Type 6 mechanical seals and O-rings. Pull-from-the-rear design for easy service without disturbing any piping. Self-cleaning impellers to prevent clogging and minimize maintenance.

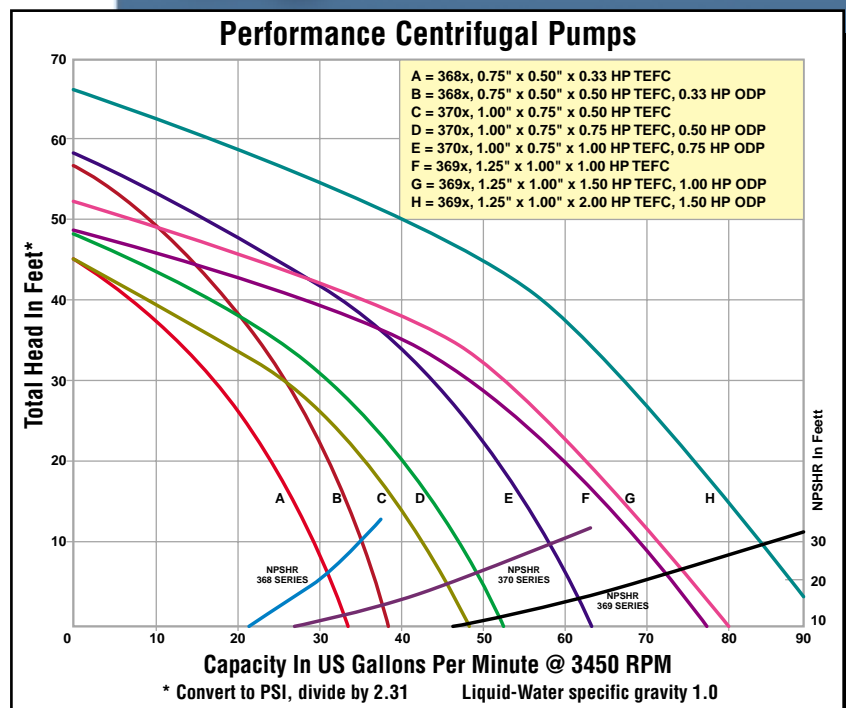
AMT Centrifugal pumps are reliable, cost effective and low maintenance. Many are readily available "Off-the Shelf" for fast, same day shipment. For use with nonflammable liquids compatible with pump component materials.



**Bronze Centrifugal Pump**



**Stainless Steel Centrifugal Pump**



# Straight Centrifugal Pumps

## Pump Dimensional & Specification Data

MODEL	HP	PH	ENC	VOLTAGE @ 60 Hz +	FULL LOAD AMPS	SUC*	DIS*	AB**	CP**	L	X	Y	Z	ZZ	SHIPPING WT.		
															XCI (-95)	XB (-97)	XSS (-98)
3680-9X	1/3	1	ODP	115/230	8 / 4	3/4"	1/2"	2.4	11.8	6.3	1.9	1.4	1.9	2.9	26 lbs.	27 lbs.	26 lbs.
368A-9X	1/3	1	TEFC	115/230	7 / 4	3/4"	1/2"	2.4	13.4	6.3	1.9	1.4	1.9	2.9	31 lbs.	32 lbs.	31 lbs.
368B-9X	1/2	1	TEFC	115/230	9 / 5	3/4"	1/2"	2.4	13.3	6.3	1.9	1.4	1.9	2.9	33 lbs.	34 lbs.	33 lbs.
3701-9X	1/2	1	ODP	115/230	10 / 5	1"	3/4"	3.0	11.9	6.3	2.4	1.4	2.1	3.3	31 lbs.	32 lbs.	31 lbs.
370B-9X	1/2	1	TEFC	115/230	9 / 5	1"	3/4"	3.0	13.3	6.3	2.4	1.4	2.1	3.3	33 lbs.	34 lbs.	33 lbs.
3703-9X	1/2	3	ODP	230/460	3 / 2	1"	3/4"	3.0	12.4	6.3	2.4	1.4	2.1	3.3	31 lbs.	32 lbs.	31 lbs.
368C-9X	1/2	3	TEFC	230/460	3/2	1"	3/4"	2.4	13.1	6.3	1.9	1.4	1.9	2.9	31 lbs.	32 lbs.	31 lbs.
3700-9X	3/4	1	ODP	115/230	13 / 7	1"	3/4"	3.0	12.4	6.3	2.4	1.4	2.1	3.3	34 lbs.	35 lbs.	34 lbs.
370A-9X	3/4	1	TEFC	115/230	9 / 5	1"	3/4"	3.0	13.8	6.3	2.4	1.4	2.1	3.3	37 lbs.	38 lbs.	37 lbs.
3702-9X	3/4	3	ODP	230/460	4 / 2	1"	3/4"	3.0	12.6	6.3	2.4	1.4	2.1	3.3	32 lbs.	33 lbs.	32 lbs.
370C-9X	3/4	3	TEFC	230/460	3 / 2	1"	3/4"	3.0	13.2	6.3	2.4	1.4	2.1	3.3	35 lbs.	36 lbs.	35 lbs.
370E-9X	1	1	TEFC	115/230	12 / 6	1"	3/4"	3.0	15.1	6.3	2.4	1.3	2.1	3.3	39 lbs.	40 lbs.	39 lbs.
370D-9X	1	3	TEFC	230/460	4 / 2	1"	3/4"	3.0	14.2	6.3	2.4	1.3	2.1	3.3	36 lbs.	37 lbs.	36 lbs.
3691-9X	1	1	ODP	115/230	17 / 9	1-1/4"	1"	3.0	12.9	6.3	2.5	1.3	2.0	3.4	36 lbs.	37 lbs.	36 lbs.
369C-9X	1	1	TEFC	115/230	12 / 6	1-1/4"	1"	3.0	14.2	6.3	2.5	1.3	2.0	3.4	40 lbs.	41 lbs.	40 lbs.
3693-9X	1	3	ODP	230/460	5 / 3	1-1/4"	1"	3.0	13.0	6.3	2.5	1.3	2.0	3.4	35 lbs.	36 lbs.	35 lbs.
369F-9X	1	3	TEFC	230/460	4 / 2	1-1/4"	1"	3.0	13.8	6.3	2.5	1.3	2.0	3.4	39 lbs.	40 lbs.	39 lbs.
3690-9X	1-1/2	1	ODP	115/230	22 / 11	1-1/4"	1"	3.0	13.3	6.3	2.5	1.3	2.0	3.4	40 lbs.	41 lbs.	40 lbs.
369A-9X	1-1/2	1	TEFC	115/230	18 / 9	1-1/4"	1"	3.0	15.1	6.3	2.5	1.3	2.0	3.4	48 lbs.	49 lbs.	48 lbs.
3692-9X	1-1/2	3	ODP	230/460	7 / 4	1-1/4"	1"	3.0	13.5	6.3	2.5	1.3	2.0	3.4	38 lbs.	39 lbs.	38 lbs.
369B-9X	1-1/2	3	TEFC	230/460	5 / 3	1-1/4"	1"	3.0	14.2	6.3	2.5	1.3	2.0	3.4	40 lbs.	41 lbs.	40 lbs.
369D-9X	2	1	TEFC	115/230	22 / 11	1-1/4"	1"	3.0	15.4	6.3	2.5	1.3	2.0	3.4	52 lbs.	53 lbs.	52 lbs.
369E-9X	2	3	TEFC	230/460	6 / 3	1-1/4"	1"	3.0	14.3	6.3	2.5	1.3	2.0	3.4	50 lbs.	51 lbs.	50 lbs.

(\*) Standard NPT (female) pipe thread.

(\*\*) This dimension may vary due to motor manufacturer's specifications.

(+) 3-Phase motors can also operate on 50 Hz. (This will change Full Load Amps, Service Factor and RPM)

**NOTE:** Dimensions have a tolerance of  $\pm 1/8"$ .

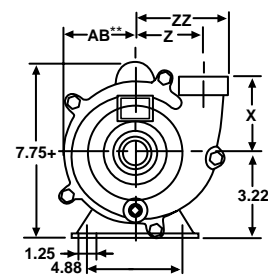
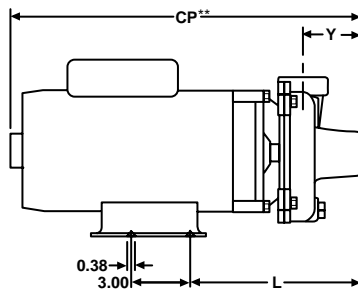
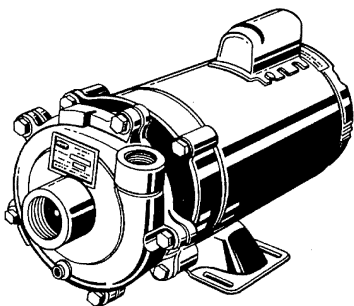
**NOTE:** Electric supply for ALL motors must be within  $\pm 10\%$  of nameplate voltage rating (Ex. 230V  $\pm 10\%$  = 207 to 253)

### When Ordering Add the Correct-9x Suffix to Model Number Indicating Material Selection

**XCI (-95)=Cast Iron Construction with SS Impeller and Buna N Seals, Max. Temperature 180°F**

**XB (-97)=All Cast Bronze Construction with Viton® Seals, Max. Temperature 200°F**

**XSS (-98)=All 316 Stainless Steel Construction with Viton® Seals, Max. Temperature 200°F**



## Standard Features

- **Stainless Steel, Bronze & Cast Iron Construction**
- **Buna N or Viton® Mechanical Seals and O-Rings Depending on Model**
- **Stainless Steel Hardware**
- **NEMA 56J ODP & TEFC Single and Three Phase Motors**
- **Stainless Steel Motor Shaft**
- **NEMA Base Mounted Motors**
- **Self-cleaning Impeller**
- **Discharge Rotates in 90° Increments**
- **Maximum Working Pressure to 75 PSI**
- **Max. Temperature 200°F (Viton), 180°F (Buna N)**
- **Front Drain Plug**
- **"Off-the-Shelf" Availability for Many Models**



400 Spring Street  
 Royersford, PA 19468  
 (610) 948-3800 Fax (610) 948-5300  
 E-mail: amt@fast.net  
 www.amtpump.com