



Bronze Marine Pumps

- **Bronze Construction**
- **Buna N Mechanical Seals and O-Ring**
- **Maximum Working Pressure 50 PSI**
- **Maximum Temperature 180° F**
- **Maximum Flow 20 GPM**
- **Maximum Head 15 Ft.**
- **Self-cleaning, Semi-open Impellers**
- **Totally Enclosed Motors**
- **12 V DC or 115VAC Motors**

The AMT Model 3670-94 Naval Bronze Straight Centrifugal pump is designed for low pressure salt water wash down and recirculating applications. The pump has been sized for salt water (1.03 specific gravity) and features: provisions for the installation of a seal wash, front drain plug, pull-from-rear design. The unit features Buna N O-ring casing seal and Buna N mechanical shaft seal. The unit is driven by a 1/8 HP capacitor start induction motor (TEFC) with ball bearings and a **Stainless Steel** shaft. On/off switch and line cord are standard.

The AMT Model 4860-97 & 4861-97 Bronze Centrifugal pump are compact and designed for use in general dewatering, salt water applications including live well tanks, circulation and chemical transfer. Buna N O-ring casing seal, Buna N mechanical shaft seal is standard. Model 4860-97 is fitted with a 1/8 HP, 12 V DC, 3700 RPM motor while Model 4861-97 is fitted with a 1/12 HP, 115 VAC, 3450 RPM motor. Both drivers meet U.S. Coast Guard standards (Title 33, Chapter 1, Part 183, Subpart 1) for ignition protection on gasoline powered vessels.

AMT Bronze Centrifugal pumps are reliable, cost effective and low maintenance. Many are readily available **"Off-the-Shelf"** for fast, same day shipment. For use with nonflammable liquids compatible with pump component materials.

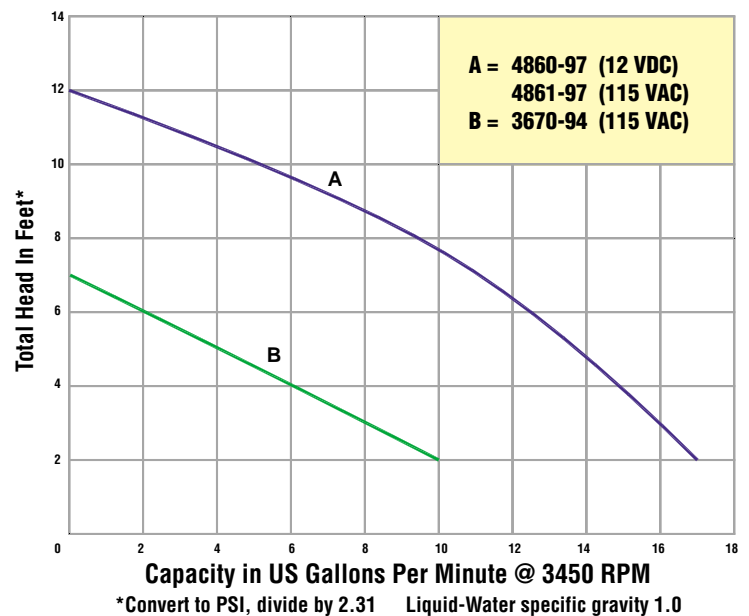


Model 3670-94
3/4" x 1/2"



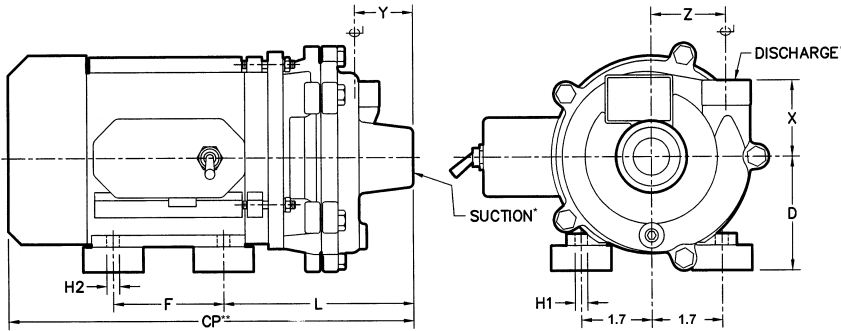
Model 4860-97
3/4" x 3/4"

Performance of Bronze Marine Pumps

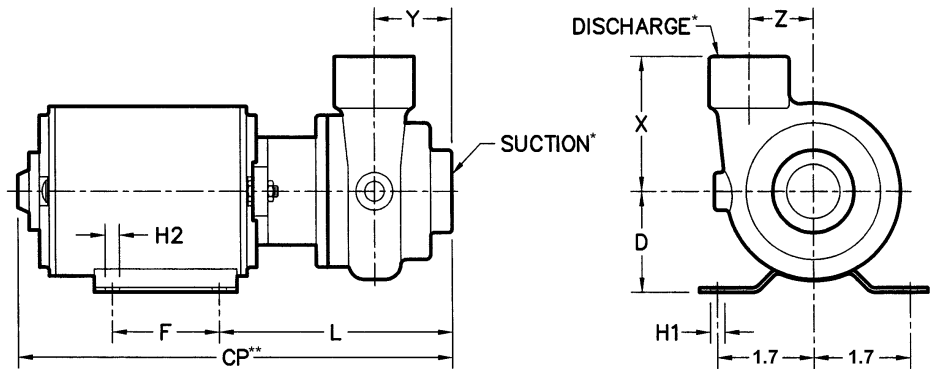


Bronze Marine Pumps

Model 3670-94



Model 486x-97



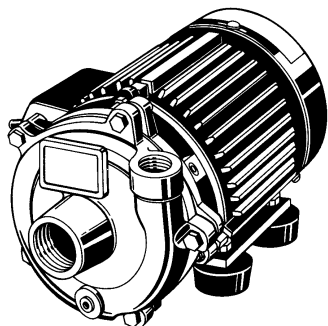
Pump Dimensional & Specification Data

Model No.	HP	PH	ENC	Voltage	Full Load Amps	SUC*	DIS*	CP**	D	F	H1	H2	L	X	Y	Z	Ship Wt.
3670-94	1/8	1	TEFC	115VAC@ 60Hz	11	3/4"	3/4"	10.1	2.8	2.7	0.3	0.3	4.7	1.9	1.4	1.9	20 Lbs.
4860-97	1/8	-	TENV	12.8 VDC	9	3/4"	3/4"	7.6	1.7	1.9	0.2	0.2	4.1	2.3	1.3	1.1	7 Lbs.
4861-97	1/12	1	TEFC	115VAC@ 60Hz	2	3/4"	3/4"	10.4	2.4	1.7	0.9	0.3	4.0	2.3	1.3	1.1	14 Lbs.

(*) Standard NPT (female) pipe thread.

(**) This dimension may vary due to motor manufacturer's specifications.

NOTE: Dimensions have a tolerance of $\pm 1/8"$.



Standard Features

- > **Bronze Construction**
- > Buna N Mechanical Seals and O-Ring
- > Maximum Working Pressure 50 PSI
- > Maximum Temperature 180° F
- > Maximum Flow 20 GPM
- > Maximum Head 15 Ft.
- > Self-cleaning, Semi-open Impellers
- > Totally Enclosed Motors
- > 12 V DC or 115 VAC Motors
- > **"Off-the-Shelf"** Availability on Many Models



400 Spring Street
 Royersford, PA 19468
 (610) 948-3800 Fax (610) 948-5300
 E-mail: amt@fast.net
 www.amtpump.com