

# Engine Driven High Pressure/Fire Pumps

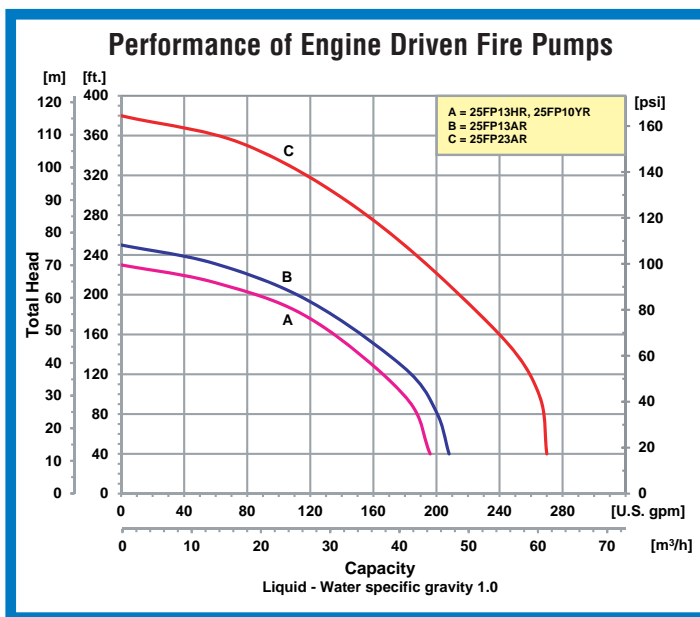
Model 25FP13HR



Model 25FP23AR

- **Aluminum Construction with Replaceable Hard Coat Anodized Wear Ring**
- **Viton® Mechanical Seal with Silicon Carbide & Carbon Faces**
- **2-1/2" NPT Port Sizes**
- **Exhaust Prime or Hand Prime Depending on Model**
- **Prime Assist to 19 Ft.**
- **Built-in Discharge Check Valve**
- **Discharge Pressure Gauge Included**
- **Suction Strainer, Nipples and Heavy Duty Steel Roll Frame with Battery Tray Included**
- **Maximum Head up to 165 PSI/ 380' TDH**
- **Delivers to 270 GPM**
- **Available with B&S Vanguard, Honda Gasoline or Yanmar Diesel with 12 Volt DC Electric Start**
- **Optional NPT to Fire Hose Thread Available – See Accessories Page**
- **Optional Wheel Kit Available**

The IPT Engine Driven line of High Pressure/Fire pumps deliver excellent pressure and flow for use in many applications including: fire protection, emergency fire fighting, washdown and AG/Sprinkler. Portable units feature metal fuel tanks installed on engine or frame depending on model. 12 Volt DC electric start engines with recoil starter from Briggs & Stratton Vanguard, Honda Gasoline or Yanmar Diesel engines are standard on these pumps. Vanguard models feature built-in exhaust prime. Honda and Yanmar models feature a manual hand prime. These pumps are equipped with Viton® Silicon Carbide/Carbon seal and Viton® O-rings/gaskets.



400 Spring Street • Royersford, PA 19468 USA

[www.amtpump.com](http://www.amtpump.com) • 888-amt-pump (268-7867)

*For use with nonflammable liquids compatible with pump component materials.* Viton® and Teflon® are registered trademarks of E. I. DuPont.



# Engine Driven High Pressure/Fire Pumps

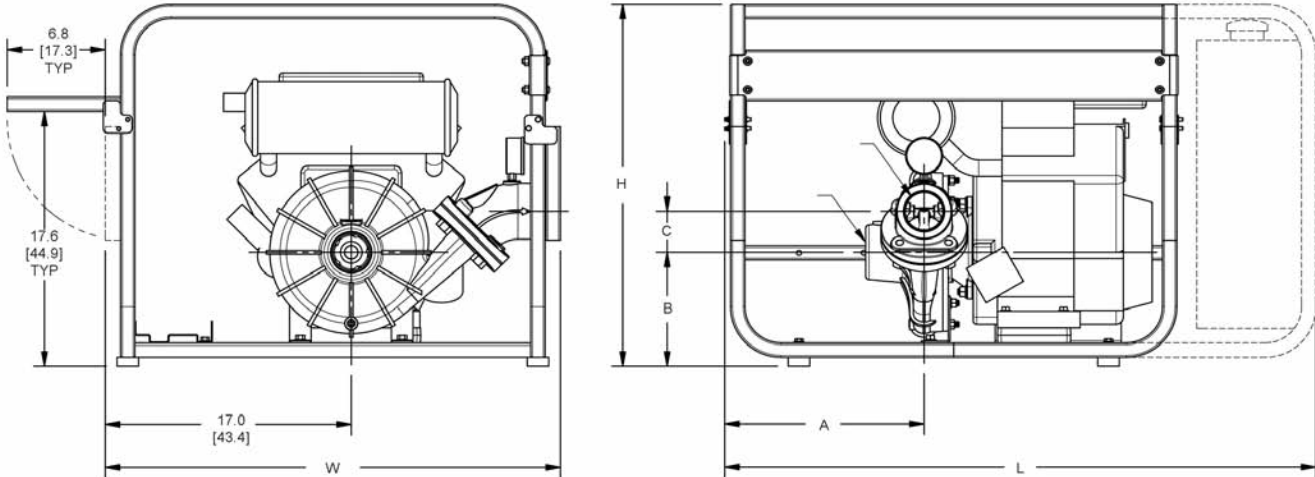
## Pump Dimensional & Specification Data

| Model    | Curve | Driver                              | Seal Type & Elastomer/Faces               | Prime Feature | Tank Size (Gal/Ltr) | Run Time (Hr.) | Ship Wt. (Lbs.) |
|----------|-------|-------------------------------------|---|---------------|---------------------|----------------|-----------------|
| 25FP10YR | A     | Yanmar L100 <sup>▲++</sup>          | Viton <sup>®</sup> Silicon Carbide/Carbon | Hand          | 1.43 / 5.4          | 2.7            | 220             |
| 25FP13HR | A     | Honda GX390 <sup>▲++</sup>          | Viton <sup>®</sup> Silicon Carbide/Carbon | Hand          | 1.6 / 6.1           | 2.5            | 200             |
| 25FP13AR | B     | B & S Vanguard 13 HP <sup>▲++</sup> | Viton <sup>®</sup> Silicon Carbide/Carbon | Exhaust       | 2.25/8.5            | 1.8            | 225             |
| 25FP23AR | C     | B & S Vanguard 23 HP <sup>▲++</sup> | Viton <sup>®</sup> Silicon Carbide/Carbon | Exhaust       | 10/37.8             | 7.0            | 255             |

**Construction: Aluminum**

▲ Oil Alert Included

++ Electric Start



**Hand Primer Not Shown for Model 25FP13HR**

| Model     | HP Class ♦ | SUC*  | DIS*  | A           | B          | C          | L            | W           | H           |
|-----------|------------|-------|-------|-------------|------------|------------|--------------|-------------|-------------|
| 25FP10YR  | 10 HP      | 2-1/2 | 2-1/2 | 13.3 [33.7] | 8.1 [20.6] | 4.6 [11.7] | 31.8 [80.8]  | 31.6 [80.3] | 25.1 [63.8] |
| 25FP13HR  | 13 HP      | 2-1/2 | 2-1/2 | 13.3 [33.7] | 6.8 [17.4] | 4.6 [11.7] | 31.8 [80.8]  | 31.6 [80.3] | 25.1 [63.8] |
| 25FP13AR  | 13 HP      | 2-1/2 | 2-1/2 | 13.3 [33.7] | 6.8 [17.4] | 4.6 [11.7] | 31.8 [80.8]  | 31.6 [80.3] | 25.1 [63.8] |
| 25FP23AR† | 23 HP      | 2-1/2 | 2-1/2 | 13.8 [35.2] | 7.9 [20.1] | 2.8 [7.2]  | 41.0 [104.3] | 31.6 [80.3] | 25.1 [63.8] |

♦ HP Class represents market category and is not intended to define actual horsepower.

(\*) Standard NPT (Male) pipe thread.

NOTE: Dimensions are in inches (centimeters) and have a tolerance of ± 1/8".

(†) Minimal Assembly Required: Auxiliary Fuel Tank Shipped Uninstalled

## Standard Features

- Aluminum Construction with Replaceable Hard Coat Anodized Wear Ring
- Viton<sup>®</sup> Mechanical Seal with Silicon Carbide & Carbon Faces
- 2-1/2" NPT Suction & Discharge Ports
- Exhaust Prime or Hand Prime Depending on Model
- Built-in Discharge Check Valve
- Discharge Pressure Gauge Included
- Choice of Briggs & Stratton Vanguard, Honda Gasoline or Yanmar Diesel Engines with 12 Volt DC Electric Start
- Maximum Temperature 200° F
- Optional NPT to Fire Hose Thread Available – See Accessories Page
- Heavy Duty Steel Roll Frame with Battery Tray Included
- Optional High Pressure Hose Kit or Wheel Kit Available



A Gorman-Rupp Company

**Manufacturer of AMT & IPT Pumps**

400 Spring Street • Royersford, PA 19468 USA

[www.amtpump.com](http://www.amtpump.com) • 888-amt-pump (268-7867)

The Gorman-Rupp Company reserves the right to discontinue any model or change specifications at any time without incurring any obligation.  
©2012 American Machine and Tool Company. All rights reserved.



A Gorman-Rupp Company

1212