

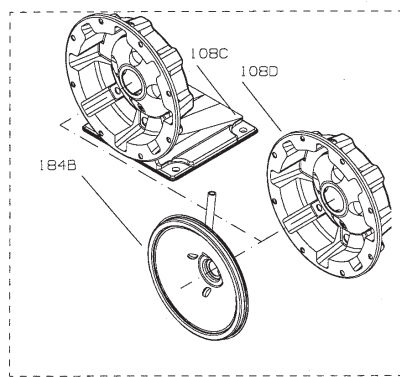
# NPO

Item No.	Description	Materials of Construction	1SN 1 x 1¼	2SN 1¼ x 1½	3SN 1½ x 2	Qty.
100	Casing	AISI 316L SS	1L499	1L440	1L441	1
101	Impeller		See Impeller Chart			
108A	Motor adapter with foot	AISI 316L SS		1L80		1
108B	without foot			1L87		
108C	with foot and flush			1L334		
108D	without foot and flush			1L335		
123	Deflector	BUNA-N		5K7		1
184A	Seal housing – standard	AISI 316L SS		1L79		1
184B	Seal housing with seal flush			1L333		
240	Motor support	300 SS		4L320		1
	Rubber channel	Rubber		9K188		1
304	Impeller locknut	AISI 316 SS		13K286		1
349	O-ring, internal	Viton standard		5L109		1
		EPR		5K252		
370	Socket head screw, casing	AISI 430 SS		13L65		8
371	Bolts, motor	Steel/plated		13K252		4
383	Mechanical seal	See Mechanical Seal Chart				1
408	Drain and vent plug, casing	AISI 316 SS		6L3		2
412B	O-ring, drain plugs	Viton standard		5L99		2
		EPR		5L80		
513	O-ring, casing	Viton standard		5K206		1
		EPR		5K193		

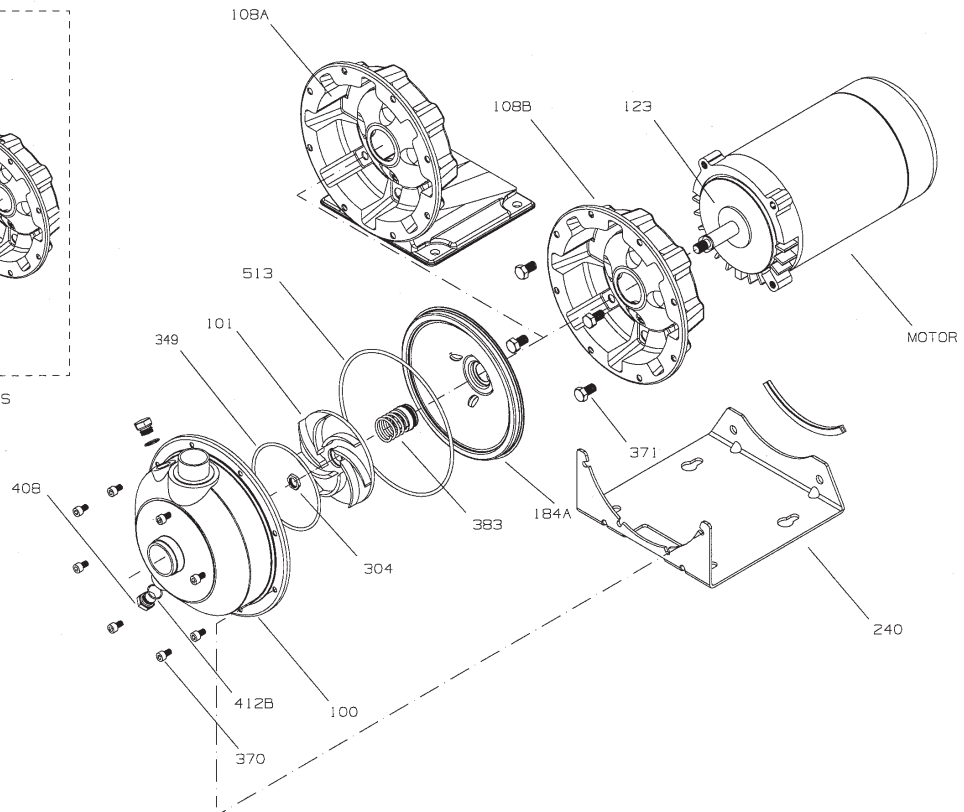
Impeller Code	Pump Size					
	1SN 1 x 1¼ – 6		2SN 1¼ x 1½ – 6		3SN 1½ x 2 – 6	
	Diameter	Part No.	Diameter	Part No.	Diameter	Part No.
A	4 <sup>5</sup> / <sub>16</sub>	2K557	5 <sup>1</sup> / <sub>16</sub>	2L704	5 <sup>1</sup> / <sub>16</sub>	2L711
B	4	2K558	5 <sup>1</sup> / <sub>16</sub>	2L705	5 <sup>1</sup> / <sub>4</sub>	2L712
C	3 <sup>3</sup> / <sub>4</sub>	2K559	4 <sup>5</sup> / <sub>8</sub>	2L706	4 <sup>15</sup> / <sub>16</sub>	2L713
D	3 <sup>1</sup> / <sub>2</sub>	2K560	4 <sup>1</sup> / <sub>16</sub>	2L707	4 <sup>7</sup> / <sub>8</sub>	2L714
E	3 <sup>1</sup> / <sub>4</sub>	2K561	4 <sup>1</sup> / <sub>16</sub>	2L708	4 <sup>7</sup> / <sub>16</sub>	2L715
F	3	2K562	3 <sup>3</sup> / <sub>4</sub>	2L709	4 <sup>3</sup> / <sub>16</sub>	2L716
G	5 <sup>3</sup> / <sub>8</sub>	2K711	3 <sup>7</sup> / <sub>16</sub>	2L710	3 <sup>3</sup> / <sub>4</sub>	2L717
H	5	2K710	–	–	–	–

John Crane Type 21 Mechanical Seal (½" Seal)					
Seal Code	Rotary	Stationary	Elastomers	Metal Parts	Part No.
2	Carbon	Silicon-Carbide	EPR	316SS	10K18*
4			Viton		10K55***
5	Sil-Carb.		EPR		10K81
6			Viton		10K62**

Note: \* Replaces obsolete 10K56. \*\* Replaces obsolete 10K29.  
 \*\*\* Replaces obsolete 10K46 and 10K24.



OPTIONAL SEAL FLUSH COMPONENTS



Goolds Pumps and the ITT Engineered Blocks Symbol are registered trademarks and tradenames of ITT Industries.