



High Pressure Centrifugal Booster Pump

MODEL

45HB, 70HB

APPLICATIONS

Wide variety of industrial, commercial and agricultural uses, especially:

- High rise buildings
- Multiple dwelling buildings
- Reverse osmosis systems
- High pressure cleaning
- Spraying systems
- Booster service

SPECIFICATIONS

Pump

- Capacities: to 100 GPM
- Heads: to 760 feet.
- Pipe connections:
Suction 2" NPT
Discharge 2" NPT.
- Temperature: 160°F (71°C) maximum.
- Inlet pressure: 100 PSI maximum.
- Rotation: right hand, i.e., clockwise when viewed from motor end.

Motor

- Open drip-proof or TEFC enclosure
60 Hz, 3500 RPM.
Threaded shaft extension.
- Single phase:
3 HP 115/208–230 V
5 HP 208–230 V
7½ HP 208–230 V.
- Three phase:
3–10 HP 208–230/460 V.

FEATURES

■ **Multi-Stage Design:** This configuration provides a steady, quiet and vibration-free operation for years of trouble-free service.

■ **Impellers and Diffusers:** Glass filled thermoplastic. Precision molded for high efficiencies.

■ **Bowls:** Constructed with 300 series stainless steel. Rabbet lock for positive alignment – no gaskets required.

■ **Mechanical Seal:** Carbon/ceramic faces. BUNA elastomers 300 series stainless steel metal parts.

■ **Motor:** Close-coupled design. Ball bearings carry all radial/axial thrust loads. Designed for continuous operation. All ratings are within working limits of the motor.

WARNING: This is a booster pump. It has no lift capability. DO NOT RUN DRY. DO NOT DEADHEAD.

Goulds Pumps is ISO 9001 Registered.

Goulds Pumps and the ITT Engineered Blocks Symbol are registered trademarks and tradenames of ITT Industries.

© 2004 Goulds Pumps
Effective June, 2004
B45-70HB

www.goulds.com

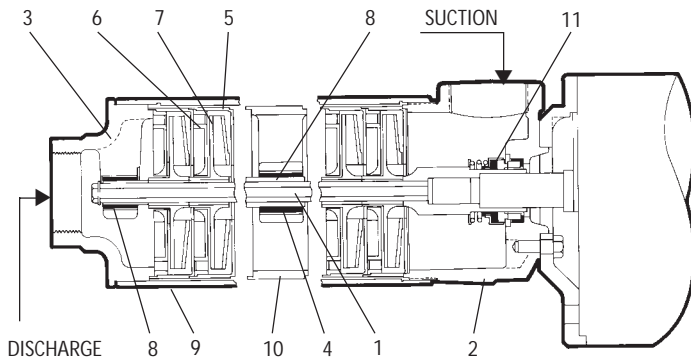
Goulds Pumps

 **ITT Industries**

High Pressure Centrifugal Booster Pump

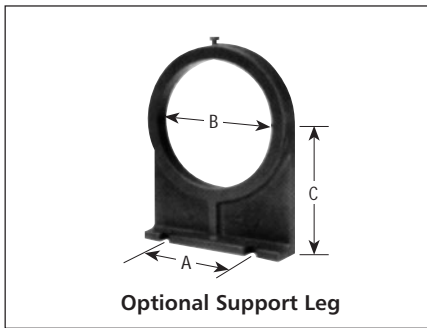
MODEL

45HB, 70HB



COMPONENTS

Item No.	Description	Material
1	Hex shaft and coupling	300 series stainless steel
2	Suction housing	Brass (ASTM B584)
3	Discharge head	Brass (ASTM B584)
4	Shaft sleeve	300 series stainless steel
5	Bowl	300 series stainless steel
6	Diffuser	Glass-filled thermoplastic
7	Impeller	Glass-filled thermoplastic
8	Marine bearing	BUNA
9	Casing	300 series stainless steel
10	Intermediate bearing spider	Brass (ASTM B584)
11	Mechanical seal	Carbon/ceramic faces, BUNA elastomers, 300 series stainless steel metal parts.



OPTIONAL SUPPORT LEG – dimensions (in inches)

Model	Frame	A	B	C
AM200	182/184	4 ¹ / ₈	5 ³ / ₈	4 ¹ / ₂
AM201	213/215	4 ¹ / ₈	5 ³ / ₈	5 ¹ / ₄

NOTE: Support leg is not required for 145 frame motors.

MODELS

Order No.	HP	No. of Stages	Phase	Enclosure	Frame	W.E.L.	Wt. (lbs.)
45HB13012	3	3	1	ODP	182	11 ¹ / ₂	88
45HB23012	3	2	1	TEFC	184	10 ⁷ / ₈	101
45HB13035	3	3	3	ODP	145	11 ¹ / ₂	59
45HB23035	3	2	3	TEFC	182	10 ⁷ / ₈	83
45HB15013	5	5	1	ODP	184	13 ³ / ₈	100
45HB25013	5	4	1	TEFC	213	12 ³ / ₄	147
45HB15035	5	5	3	ODP	182	13 ³ / ₈	80
45HB25035	5	4	3	TEFC	184	12 ³ / ₄	99
45HB17513	7 ¹ / ₂	7	1	ODP	213	16 ¹ / ₄	169
45HB17535	7 ¹ / ₂	7	3	ODP	184	16 ¹ / ₄	103
45HB27535	7 ¹ / ₂	6	3	TEFC	213	15 ⁵ / ₈	150
45HB11135	10	10	3	ODP	213	21 ¹ / ₂	155
45HB21135	10	8	3	TEFC	215	17 ¹ / ₂	190
70HB13012	3	2	1	ODP	182	10 ⁷ / ₈	86
70HB23012	3	2	1	TEFC	184	10 ⁷ / ₈	99
70HB13035	3	2	3	ODP	145	10 ⁷ / ₈	57
70HB23035	3	2	3	TEFC	182	10 ⁷ / ₈	81
70HB15013	5	4	1	ODP	184	12 ³ / ₄	98
70HB25013	5	3	1	TEFC	213	11 ¹ / ₂	145
70HB15035	5	4	3	ODP	182	12 ³ / ₄	78
70HB25035	5	3	3	TEFC	184	11 ¹ / ₂	97
70HB17513	7 ¹ / ₂	6	1	ODP	213	15 ⁵ / ₈	170
70HB17535	7 ¹ / ₂	6	3	ODP	184	15 ⁵ / ₈	101
70HB27535	7 ¹ / ₂	5	3	TEFC	213	13 ⁷ / ₈	148
70HB11135	10	9	3	ODP	213	20 ¹ / ₄	153
70HB21135	10	7	3	TEFC	215	17 ¹ / ₂	188

DIMENSIONS – determined by motor (in inches)

Frame	A	AB	B	BG	C	D	E	F	G	H	O
145	6 ¹ / ₂	5 ¹ / ₄	5 ¹⁵ / ₁₆	4 ⁷ / ₈	6	3 ¹ / ₂	2 ³ / ₄	2	5 ⁵ / ₃₂	11 ¹¹ / ₃₂	6 ⁵ / ₈
182 ¹ / ₈₄	8 ¹ / ₂	6	6 ¹ / ₂	5 ³ / ₄	9 ⁹ / ₁₆	4 ¹ / ₂	3 ³ / ₄	2 ¹ / ₄	5 ⁵ / ₃₂	13 ¹³ / ₃₂	8 ¹ / ₂
213 ² / ₂₁₅	9 ¹ / ₂	7 ³ / ₈	8	7 ¹ / ₄	9 ⁷ / ₁₆	5 ¹ / ₄	4 ¹ / ₄	2 ³ / ₄	7 ⁵ / ₃₂	13 ¹³ / ₃₂	10 ³ / ₁₆

(All dimensions are in inches. Do not use for construction purposes.)

