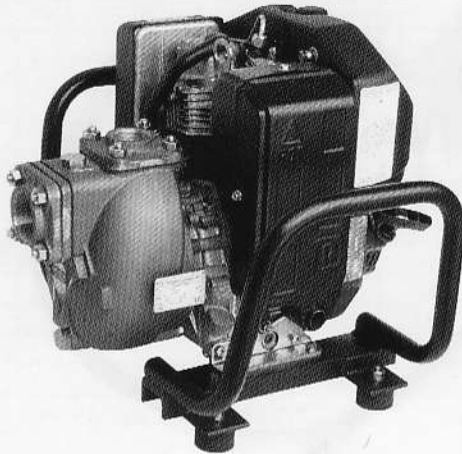




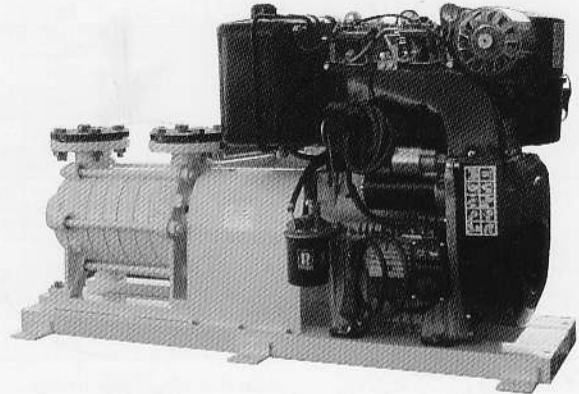
" MFC - MFS - MBMA - MACM "

MOTOPOMPE BARRELABILI
SERIE "MFC - MFS - MBMA - MACM"
Con motori benzina e diesel

PORTABLE ENGINE PUMPS
"MFC - MFS - MBMA - MACM" SERIES
With gasoline and diesel oil engines



MBMA 40



MACM

APPLICAZIONI:

Modelli MFC - MFS - MACM: Sentina, antincendio, travaso liquidi
Modello MBMA: Antincendio, travaso liquidi puliti

COSTRUZIONE:

Corpo pompa:BRONZO
Girante:BRONZO
Albero:ACCIAIO INOX AISI 316
Tenuta meccanica: DI ALTA QUALITÀ IN CERAMICA, GRAFITE INOX

MOTORI:

Ruggerini e/o Lombardini

GARANZIA:

Un anno (vedi condizioni generali di vendita)

CARATTERISTICHE:

Ciclo diesel quattro tempi, iniezione diretta. Raffreddamento ad aria forzata con soffiante assiale. Alimentazione con pompa combustibile a doppia membrana. Carter motore in alluminio pressofuso. Avviamento elettronico o a funicella.

APPLICATIONS:

MFC - MFS - MACM models: Bilge, fire-fighting, liquids transfer etc.
MBMA model: Fire - fighting, transfer clean liquids

CONSTRUCTION FEATURES:

Body pump:BRONZE
Impeller:BRONZE
Shaft:STAINLESS STEEL AISI 316
Mechanical seal: HIGH QUALITY ON CERAMICS, GRAPHITE INOX

ENGINES:

Ruggerini a/o Lombardini

WARRANTY:

One year (see our general sale conditions)

CHARACTERISTICS:

Four stroke cycle diesel, direct injection. Forced air cooling with axial fan. Supply with double diaphragm fuel pump. Diecast aluminium crankcase. Electric or rope starting.



MFC - MFS

PRESTAZIONI

PERFORMANCES

| POMPA PUMP | MOTORE ENGINE | kW | GIRI/1' max RPM max | GIRI/1' 1000+RPM1000 | | | GIRI/1' 1500+RPM1500 | | | GIRI/1' 2000+RPM2000 | | | |
|---------------|------------------|-----|------------------------|----------------------|------|-----|----------------------|-----|-----|----------------------|-----|-----|-----|
| | | | | l/min | H | kW | l/min | H | kW | l/min | H | kW | |
| MFC 40/160 | Diesel | 4 | 2000 | l/min | 32 | 100 | 160 | 65 | 160 | 270 | 100 | 200 | 300 |
| | | | | H | 9 | 6 | 3 | 18 | 13 | 5 | 30 | 22 | 8 |
| | | | | kW | 0.7 | 0.6 | 0.3 | 1.9 | 1.7 | 1.4 | 3.9 | 3.5 | 3 |
| MFC 50 | Diesel | 4 | 1500 | l/min | 33 | 166 | 266 | 66 | 200 | 400 | | | |
| | | | | H | 10 | 7 | 4 | 22 | 18 | 7 | | | |
| | | | | kW | 0.9 | 0.8 | 0.7 | 3.2 | 3 | 2.6 | | | |
| MFS 40/14 | Diesel | 6.2 | 2000 | l/min | 30 | 90 | 172 | 52 | 190 | 328 | 75 | 223 | 445 |
| | | | | H | 11.2 | 8 | 1.5 | 24 | 15 | 6 | 40 | 29 | 11 |
| | | | | kW | 1 | 0.9 | 0.7 | 2.1 | 1.7 | 1.2 | 5.1 | 4.2 | 2.7 |
| MFS 50 | Diesel | 4 | 1500 | l/min | 33 | 133 | 216 | 33 | 216 | 383 | | | |
| | | | | H | 24 | 10 | 1 | 46 | 17 | 1 | | | |
| | | | | kW | 1.3 | 0.7 | 0.5 | 3.6 | 2 | 1.3 | | | |
| MFS 65 | Diesel | 6.2 | 1500 | l/min | 84 | 200 | 250 | 84 | 250 | 500 | | | |
| | | | | H | 20 | 7 | 1 | 50 | 28 | 5 | | | |
| | | | | kW | 1.8 | 1 | 0.9 | 5.7 | 4.8 | 2 | | | |

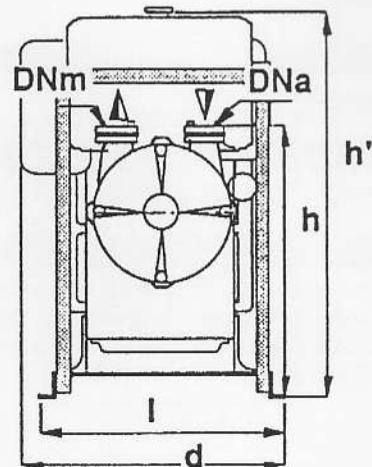
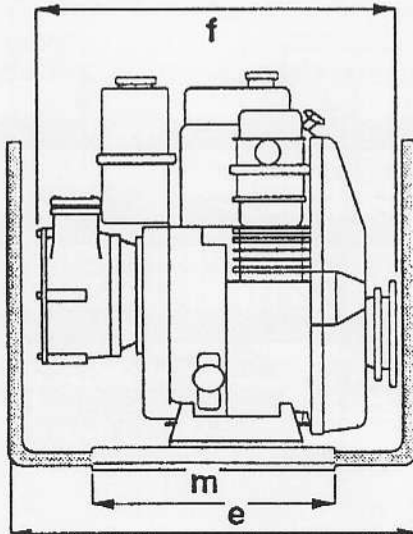
l/min = PORTATA / DELIVERY

H = PREVALENZA (mH₂O) / HEAD (mH₂O)

kW = POTENZA ASSORBITA / ABS. POWER

DIMENSIONI E PESI

DIMENSION AND WEIGHT



| POMPA PUMP | MOTORE ENGINE | f | h | h' | h'' | d | l | m | e | DNa | DNm | Kg |
|---------------|------------------|-----|-----|-----|-----|-----|-----|-----|-----|--------|--------|----|
| MFC 40/160 | Diesel | 610 | 420 | 550 | - | 362 | 355 | 380 | 710 | 1" 1/2 | 1" 1/2 | 82 |
| MFC 50 | Diesel | 625 | 440 | 550 | - | 362 | 355 | 380 | 710 | 2" | 2" | 88 |
| MFS 40/14 | Diesel | 650 | 256 | 360 | - | 464 | 440 | 250 | 750 | D 40 | D 40 | 85 |
| MFS 50 | Diesel | 650 | 470 | 550 | - | 362 | 355 | 380 | 750 | 2" | 2" | 87 |
| MFS 65 | Diesel | 570 | 320 | 560 | - | 430 | 400 | 310 | 670 | 2" 1/4 | 2" 1/4 | 92 |

I pesi si intendono a secco

Dry weight



MBMA

PRESTAZIONI

PERFORMANCES



| POMPA PUMP | MOTORE ENGINE | kW | GIRI/1' max RPM max | GIRI/1' 3000+RPM3000 | | | GIRI/1' 3300+RPM3300 | | | GIRI/1' 3600+RPM3600 | | | |
|---------------|------------------|-----|------------------------|----------------------|-----|-----|----------------------|-----|-----|----------------------|-----|-----|-----|
| | | | | l/min | H | kW | l/min | H | kW | l/min | H | kW | |
| MBMA 40 | Diesel | 3.7 | 3300 | l/min | 50 | 265 | 450 | 55 | 290 | 495 | | | |
| | | | | H | 27 | 20 | 7 | 32 | 24 | 8 | | | |
| | | | | kW | 1.3 | 2 | 2.3 | 1.7 | 2.6 | 3 | | | |
| MBMA 40 | Diesel | 6.5 | 3600 | l/min | 50 | 265 | 450 | | | | 250 | 315 | 485 |
| | | | | H | 27 | 20 | 7 | | | | 35 | 30 | 16 |
| | | | | kW | 1.3 | 2 | 2.3 | | | | 3 | 3.6 | 4.1 |
| MBMA 50 | Diesel | 9.5 | 3600 | l/min | 83 | 415 | 750 | | | | 100 | 500 | 900 |
| | | | | H | 36 | 32 | 17 | | | | 52 | 46 | 25 |
| | | | | kW | 2 | 3.9 | 4.9 | | | | 3.4 | 6.6 | 8.3 |

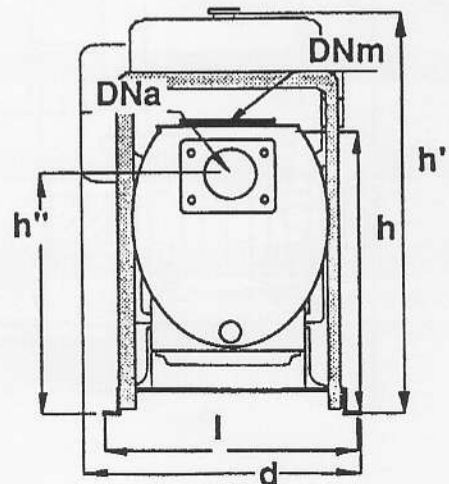
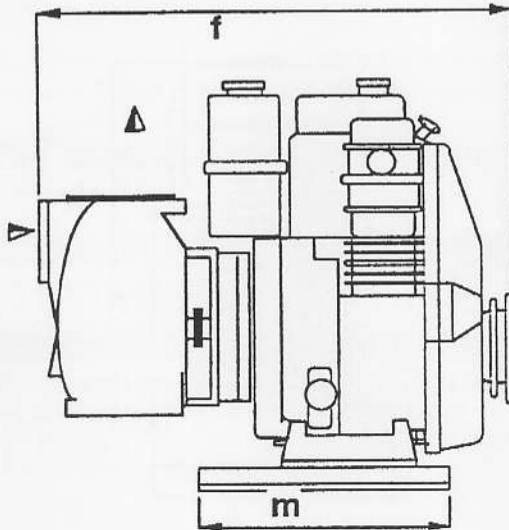
l/min = PORTATA / DELIVERY

H = PREVALENZA (mH₂O) / HEAD (mH₂O)

kW = POTENZA ASSORBITA / ABS. POWER

DIMENSIONI E PESI

DIMENSION AND WEIGHT



| POMPA PUMP | MOTORE ENGINE | f | h | h' | h'' | d | l | m | e | DNa | DNm | Kg |
|---------------|------------------|-----|-----|-----|-----|-----|-----|-----|---|--------|--------|----|
| MBMA40 | Diesel | 600 | 320 | 515 | 252 | 432 | 280 | 127 | - | 2" | 1" 1/2 | 58 |
| MBMA40 | Diesel | 600 | 320 | 515 | 252 | 432 | 280 | 127 | - | 2" | 1" 1/2 | 70 |
| MBMA 50 | Diesel | 660 | 297 | 557 | 222 | 437 | 280 | 127 | - | 2" 1/2 | 2" | 85 |

I pesi si intendono a secco

Dry weight



MACM - BT

PRESTAZIONI

PERFORMANCES

| POMPA PUMP | MOTORE ENGINE | kW | GIRI/1' max RPM max | GIRI/1' 1500+RPM1500 | | | | | GIRI/1' 1800+RPM1800 | | | | |
|---------------|------------------|------|------------------------|----------------------|-----|-----|-----|-----|----------------------|-----|-----|-----|-----|
| | | | | Lt. | H | kW | Lt. | H | kW | Lt. | H | kW | |
| M-ACM 501 BT | Diesel | 9 | 1800 | Lt. | | | | | | 220 | 290 | 350 | 420 |
| | | | | H | | | | | | 50 | 40 | 30 | 20 |
| | | | | kW | | | | | | 7 | 6 | 5.5 | 4 |
| M-ACM 502 BT | Diesel | 7.7 | 1500 | Lt. | 200 | 250 | 275 | 300 | 350 | | | | |
| | | | | H | 70 | 55 | 45 | 40 | 25 | | | | |
| | | | | kW | 7.3 | 6.2 | 5.5 | 5 | 4 | | | | |
| M-ACM 651 BT | Diesel | 10.5 | 1800 | Lt. | | | | | | 500 | 550 | 600 | 650 |
| | | | | H | | | | | | 40 | 35 | 30 | 20 |
| | | | | kW | | | | | | 10 | 9.5 | 9 | 8.5 |

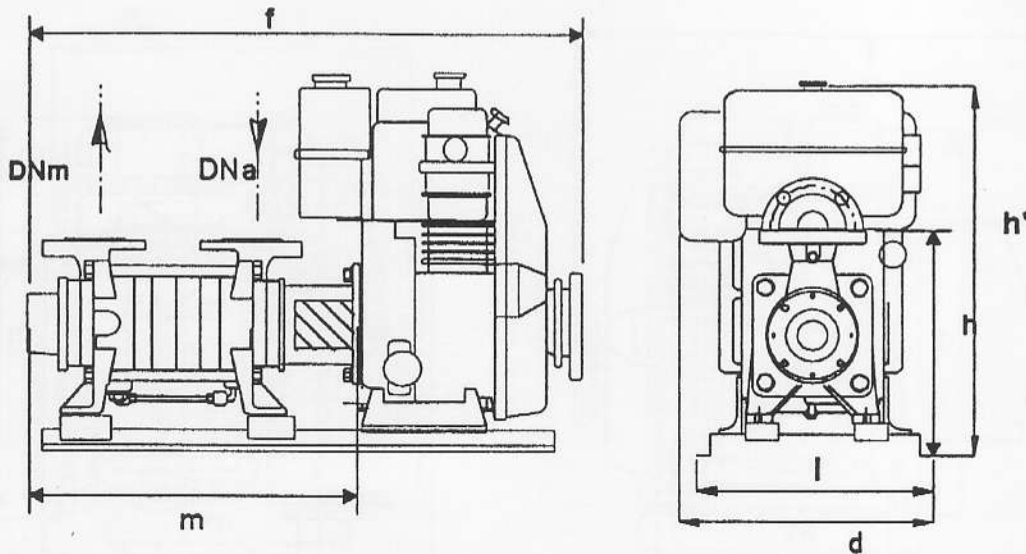
l/min = PORTATA / DELIVERY

H = PREVALENZA (mH₂O) / HEAD (mH₂O)

kW = POTENZA ASSORBITA / ABS. POWER

DIMENSIONI E PESI

DIMENSION AND WEIGHT



| POMPA PUMP | MOTORE ENGINE | f | h'' | h' | h | d | l | m | e | DNa | DNm | Kg |
|---------------|------------------|------|-----|-----|-----|-----|-----|-----|---|-----|-----|-----|
| M-ACM 501 BT | Diesel | 950 | - | 630 | 350 | 500 | 280 | 520 | - | 50 | 50 | 120 |
| M-ACM 502 BT | Diesel | 990 | - | 630 | 350 | 500 | 280 | 570 | - | 50 | 50 | 130 |
| M-ACM 651 BT | Diesel | 1200 | - | 630 | 380 | 500 | 280 | 580 | | 65 | 65 | 150 |

I pesi si intendono a secco

Dry weight