

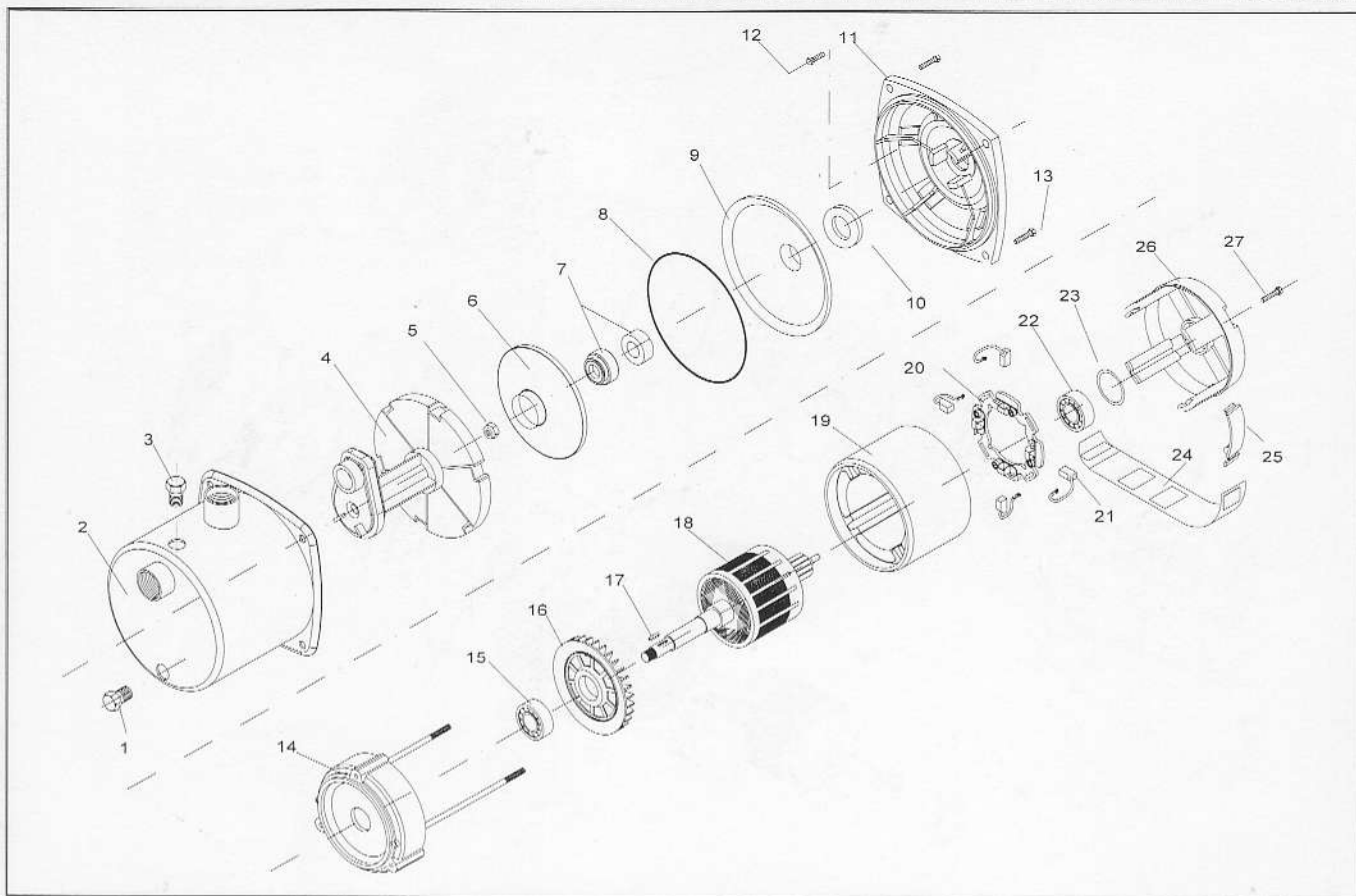
"ECOINOX 1 ÷ ECOINOX 2 (C.C. ÷ D.C.)"

EL/POMPA ECOINOX 1 ÷ ECOINOX 2 C.C.

EL/PUMP ECOINOX 1 ÷ ECOINOX 2 D.C.



Gli esplosi contenuti in questo catalogo sono indicativi e possono essere modificati in qualsiasi momento senza preavviso.
The exploded drawing in this catalogue are indicative and can be changed in every moment without notice.



Vite scarico .1	1. Screw for discharge
Corpo pompa .2	2. Body pump
Vite carico .3	3. Screw for charge
Diffusore + Venturi .4	4. Diffuser + Venturi
Dadi fissaggio girante .5	5. Nut for impeller block
Girante .6	6. Impeller
Tenuta meccanica .7	7. Mechanical seal
O-ring .8	8. O-ring
Disco acciaio inox .9	9. Inox disk
Anello paraspruzzi .10	10. Splash guard ring
Raccordo pompa motore .11	11. Motor pump fitting
Vite fissaggio motore .12	12. Screw for fix motor
Vite fissaggio pompa .13	13. Screw for fix pump
Calotta anteriore .14	14. Front cover
Cuscinetto anteriore .15	15. Front bearing
Ventola di raffreddamento .16	16. Cooling fan
Chiavetta girante .17	17. Impeller key
Albero con pacco rotorico .18	18. Shaft with parcel rotor
Cassa motore .19	19. Motor case
Disco porta spazzole .20	20. Brushes holder ring
Spazzole .21	21. Brushes
Cuscinetto posteriore .22	22. Back bearing
Anello di compensazione .23	23. Compensation ring
Fascetta copri spazzole .24	24. Protection strip for brushes
Clip .25	25. Clip
Calotta posteriore .26	26. Back cover
Vite di sbloccaggio asse .27	27. Screw for shaft unblock

DESCRIZIONE	COD.	DESCRIPTION
ECOINOX 1 V.12 C.C.	01EJ014	ECOINOX 1 V.12 D.C.
ECOINOX 1 V.24 C.C.	01EJ114	ECOINOX 1 V.24 D.C.
ECOINOX 2 V.24 C.C.	01EJ124	ECOINOX 2 V.24 D.C.