

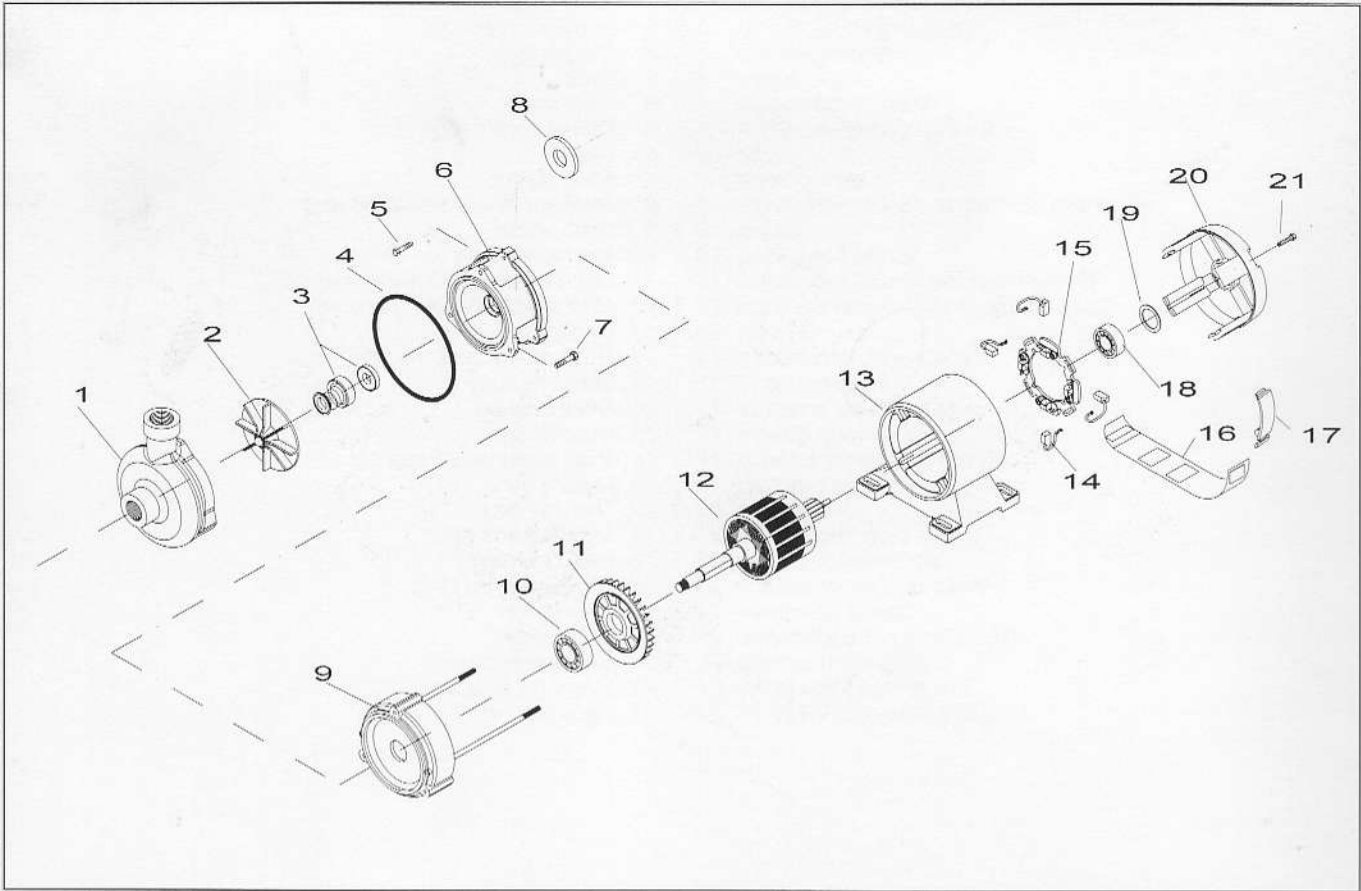
"CB 160 (C.C.÷D.C.)"

EL/POMPA CB 160 C.C.

EL/PUMP CB 160 D.C.



Gli esplosi contenuti in questo catalogo sono indicativi e possono essere modificati in qualsiasi momento senza preavviso.
 The exploded drawings in this catalogue are indicative and can be changed in every moment without notice.



- | | |
|-------------------------------|----------------------------------|
| Corpo pompa .1 | 1. Body pump |
| Girante .2 | 2. Impeller |
| Tenuta meccanica .3 | 3. Mechanical seal |
| O-ring .4 | 4. O-ring |
| Vite fissaggio motore .5 | 5. Screw for fix motor |
| Raccordo pompa motore .6 | 6. Motor pump fitting |
| Vite fissaggio pompa .7 | 7. Screw for fix pump |
| Anello paraspruzzi .8 | 8. Splash guard ring |
| Calotta anteriore motore .9 | 9. Front motor cover |
| Cuscinetto anteriore .10 | 10. Front bearing |
| Ventola di raffreddamento .11 | 11. Cooling fan |
| Albero con pacco rotorico .12 | 12. Shaft with parcel rotor |
| Cassa motore .13 | 13. Motor case |
| Spazzole .14 | 14. Brushes |
| Anello porta spazzole .15 | 15. Brushes holder ring |
| Fascetta copri spazzole .16 | 16. Protection strip for brushes |
| Clip .17 | 17. Clip |
| Cuscinetto posteriore .18 | 18. Back bearing |
| Anello di compensazione .19 | 19. Compensation ring |
| Calotta posteriore motore .20 | 20. Back motor cover |
| Vite di sbloccaggio asse .21 | 21. Screw for shaft unblock |

DESCRIZIONE	COD.	DESCRIPTION
CB 160 V.12 C.C.	01FCB160N	CB 160 V.12 D.C.
CB 160 V.24 C.C.	01FCB161N	CB 160 V.24 D.C.