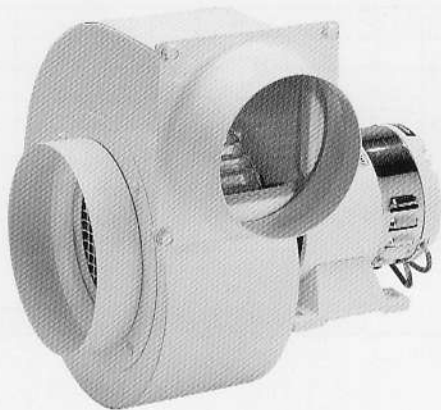




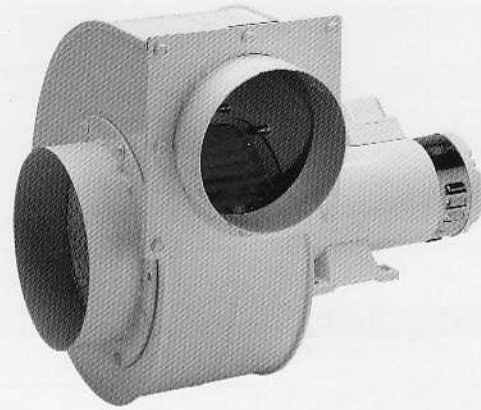
"C"

**EL/VENTILATORI CENTRIFUGHI  
SERIE "C"**

**CENTRIFUGAL EL/BLOWERS  
"C" SERIES**



C 503 A (C.C. - D.C.)



C 20 (C.C. - D.C.)

**APPLICAZIONI:**

Aspirazione e ventilazione di aria nei locali chiusi (WC, cucine, sala macchine)

**APPLICATIONS:**

Air suction and ventilation in closed area (wc, galley, engine rooms)

**COSTRUZIONE:**

Chiocciola: ..... ACCIAIO VERNICIATO  
Girante: ..... ACCIAIO A PALE IN AVANTI  
su richiesta in Inox

**CONSTRUCTION FEATURES:**

Spiral casing: ..... PAINTING STEEL  
Impeller: ..... STEEL FORWARD BLADES  
Stainless steel on request

**MOTORI:**

Isolamento: ..... Classe "F"  
Protezioni: ..... "IP 22" per C.C. ; "IP 44/55" per C.A.  
Voltaggi: ..... V.12 ; 24 C.C. ; V.230M ; 230/400T C.A. 50 Hz

**MOTORS:**

Insulation: ..... "F" class  
Protections: ..... "IP 22" for D.C. ; "IP 44/55" for A.C.  
Voltages: ..... V. 12 ; 24 D.C. ; V. 230 M; 230/400 T.A.C. 50 Hz

**RUMOROSITÀ:**

I valori della rumorosità sono espressi in db/A, misurati in campo libero alla distanza di m.1,5 dal ventilatore.

**NOISE LEVEL:**

Noise level values are expressed in db/A, are measured in a free range at the distance of 1,5 m. from the fan.

**GARANZIA:**

Un anno (vedi condizioni generali di vendita)

**WARRANTY:**

One year (see our general sale conditions)

**GENERALITÀ:**

I ventilatori serie "C" sono concepiti per ottenere basse e medie pressioni a basse e medie portate. L'aria convogliata, anche leggermente polverosa può avere una temperatura massima di 80°C. I modelli serie "C 202; 302; 402; 502U; 503U; 20" sono forniti di serie con flangie portatubo e rete di protezione in aspirazione, mentre i modelli serie "C 25; 30" hanno di serie le controflangie per attacchi di tubazioni.

**GENERALITY:**

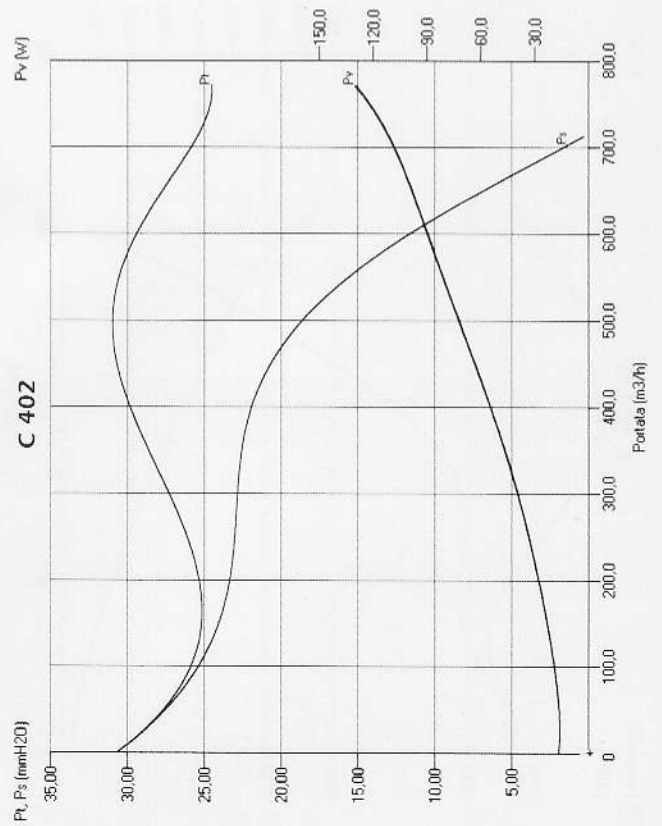
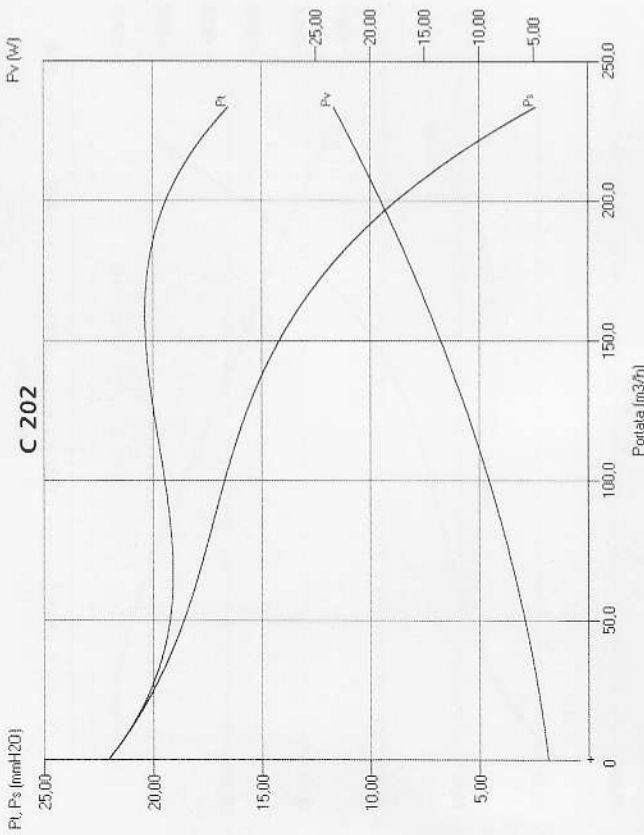
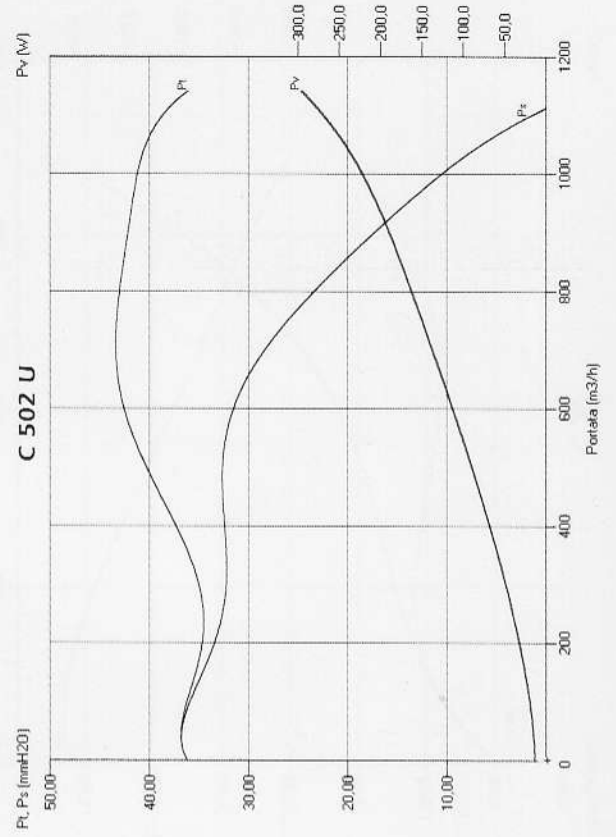
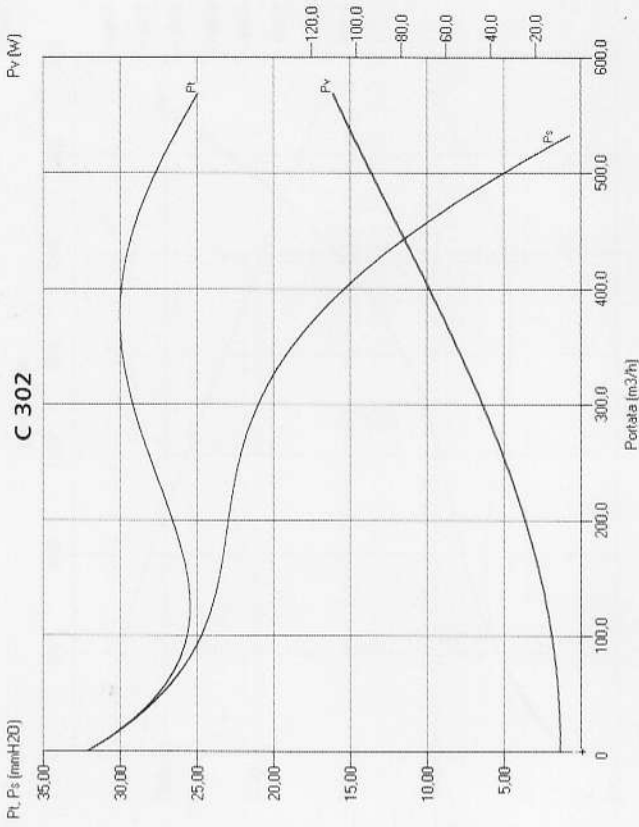
The blowers "C" series are built to obtain low and medium pressure at low medium flow rates. The air passing trough the fan even if it is slightly dusty can have a maximum temperature of +80°C. The "C202; 302; 402; 502U 503U 20" models are supplied with flanged fitting and safety grid on the fan inlet, while the "C 25; 30" models are supplied with a counter flanges for fitting to the piping.





PRESTAZIONI

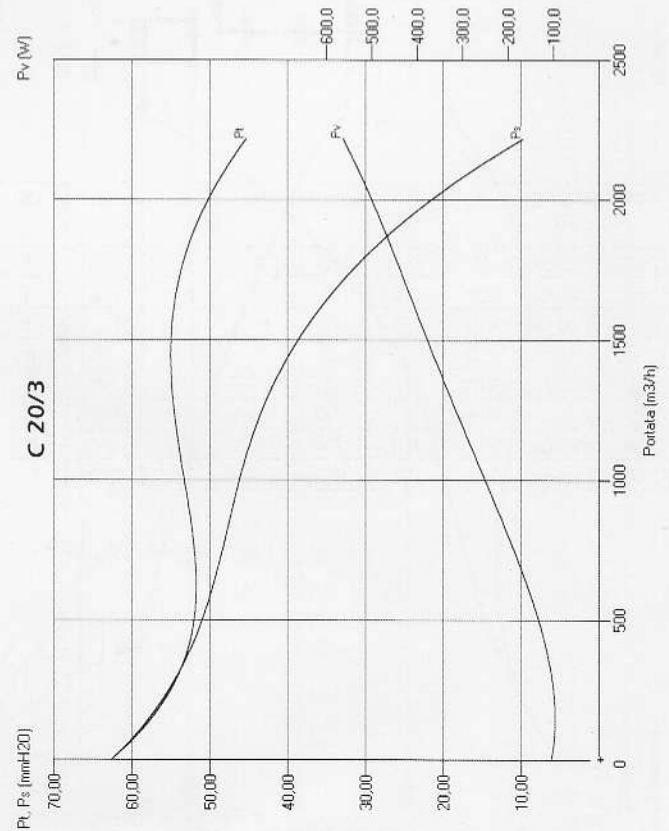
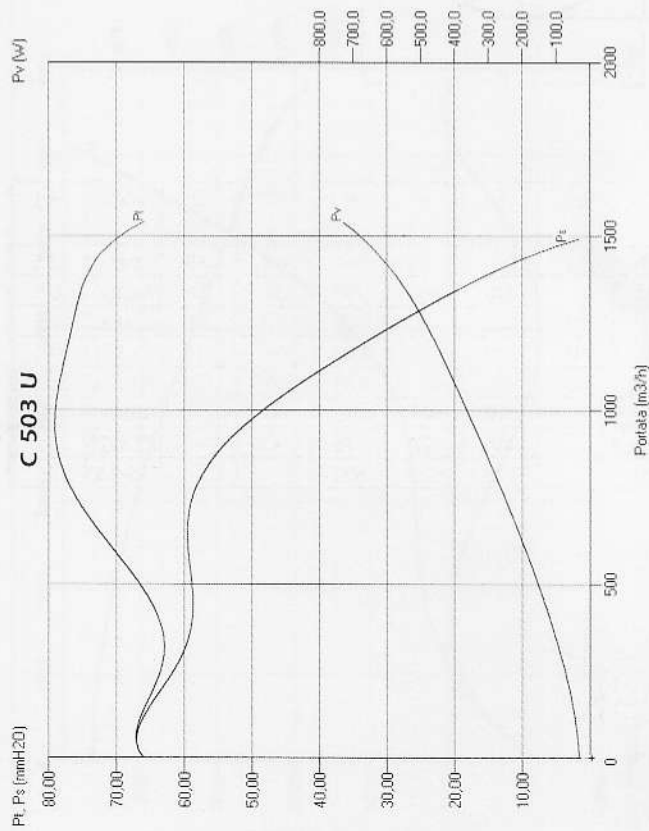
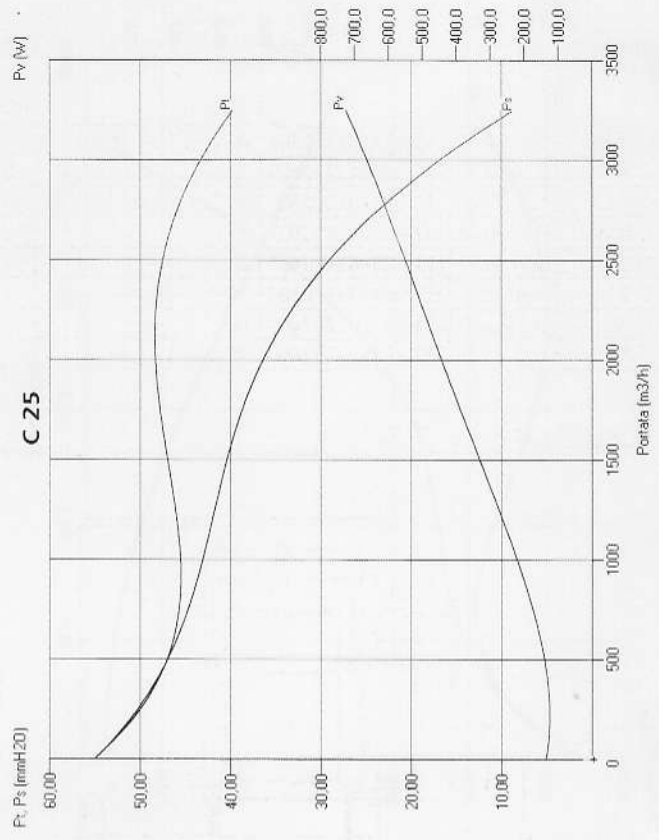
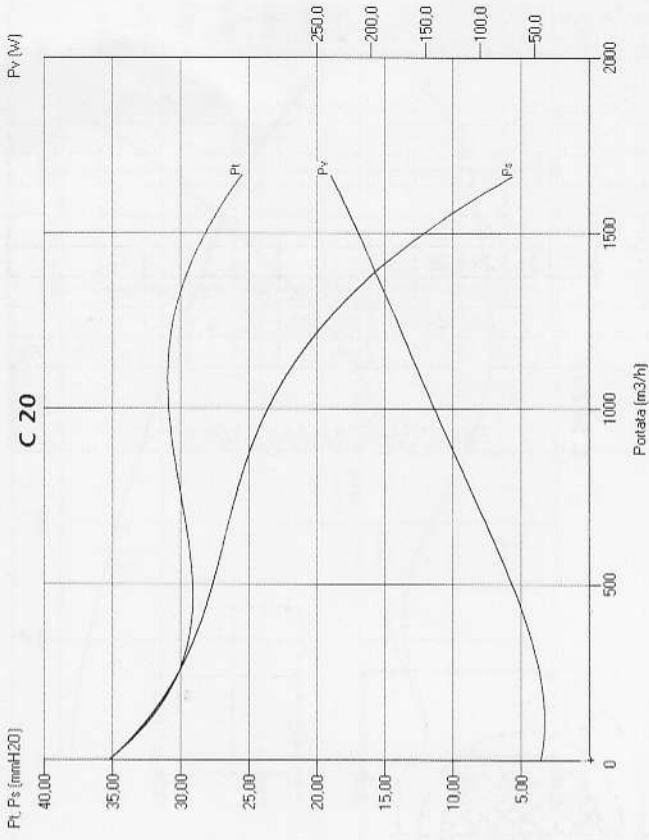
PERFORMANCES





PRESTAZIONI

PERFORMANCES

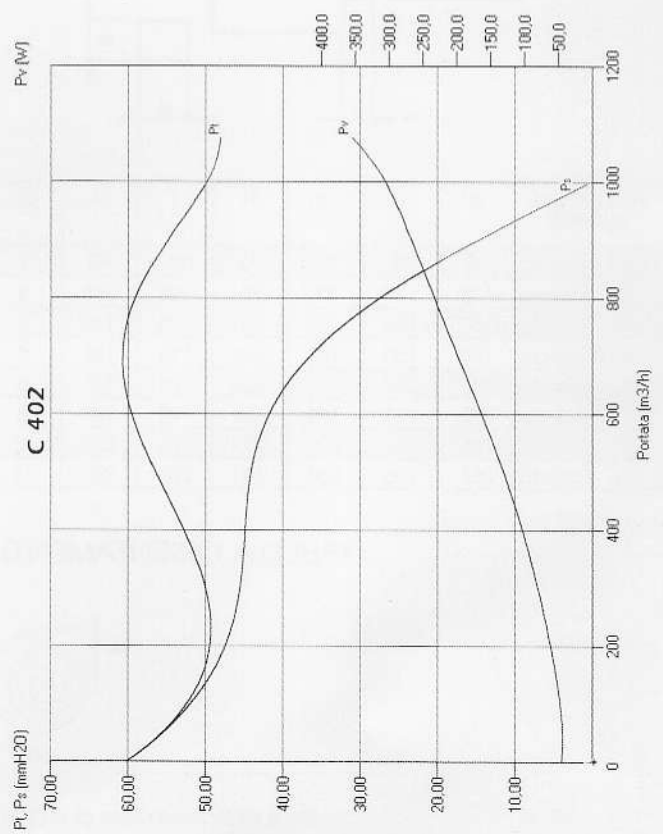
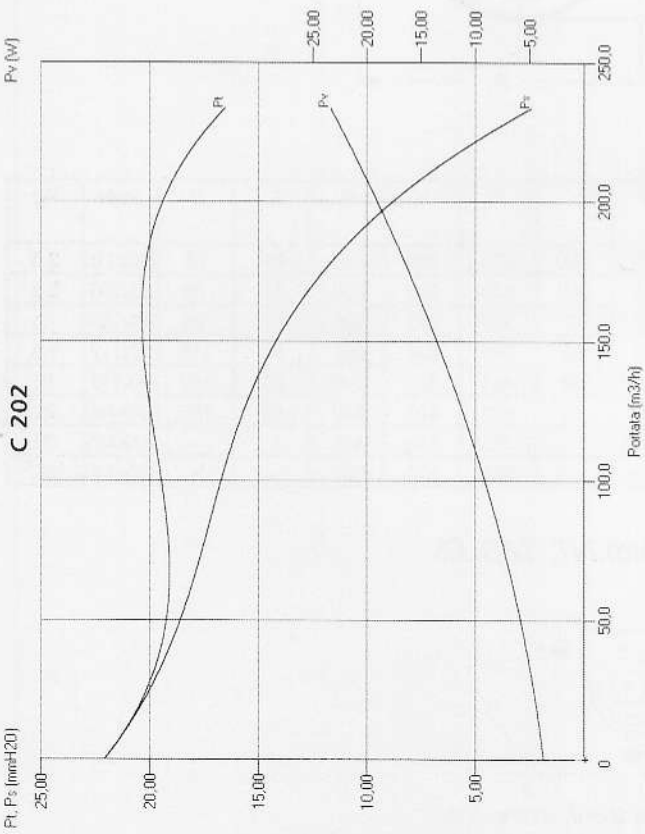
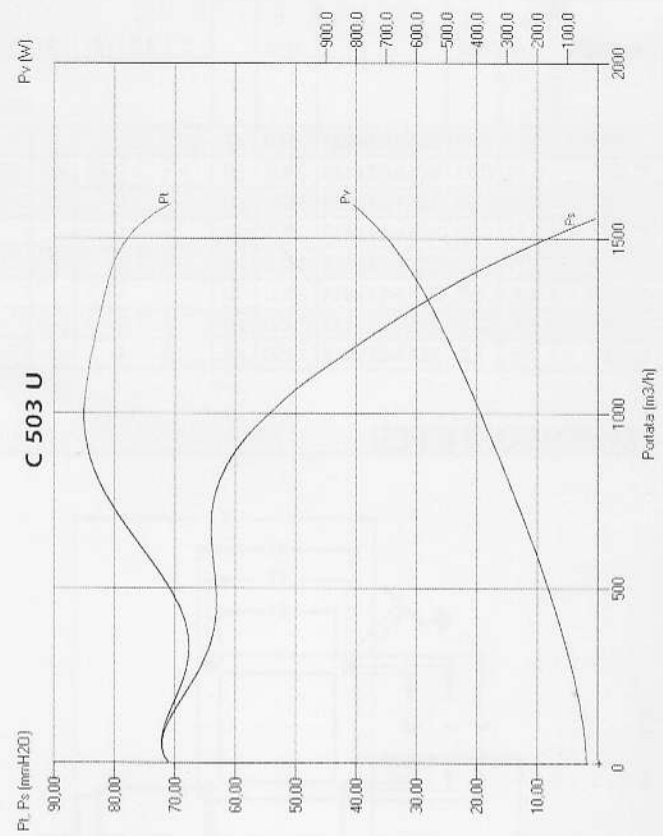
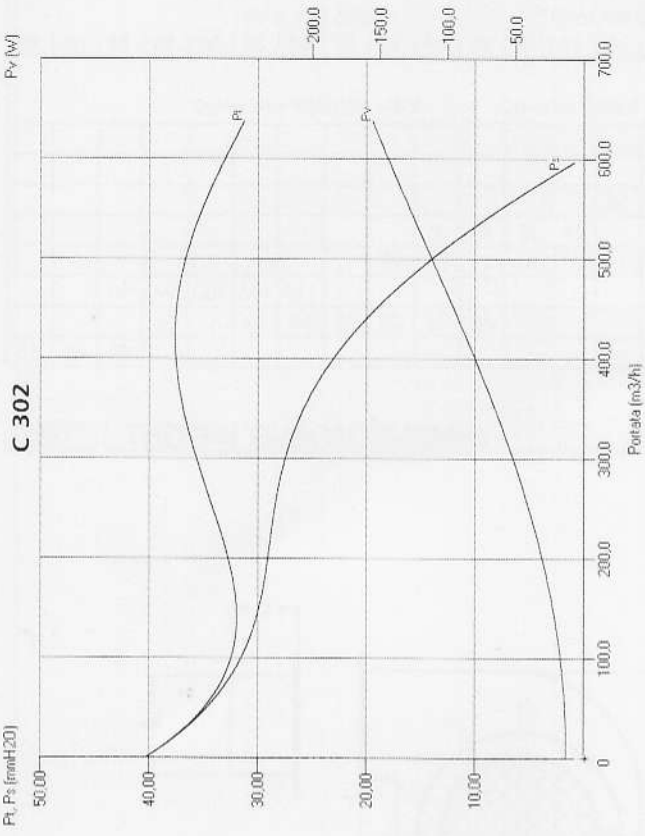






PRESTAZIONI

PERFORMANCES





PRESTAZIONI

PERFORMANCES

