

Fluid-o-Tech magnet drive gear pumps MGK series with increased pressure

MGK
BULLETIN
06/98 Edition

The MGK series magnet drive gear pumps, an evolution of the MG series, precision performance pumps for high technology applications, are capable of better performances thanks to a stronger magnet which allows a higher decoupling pressure.

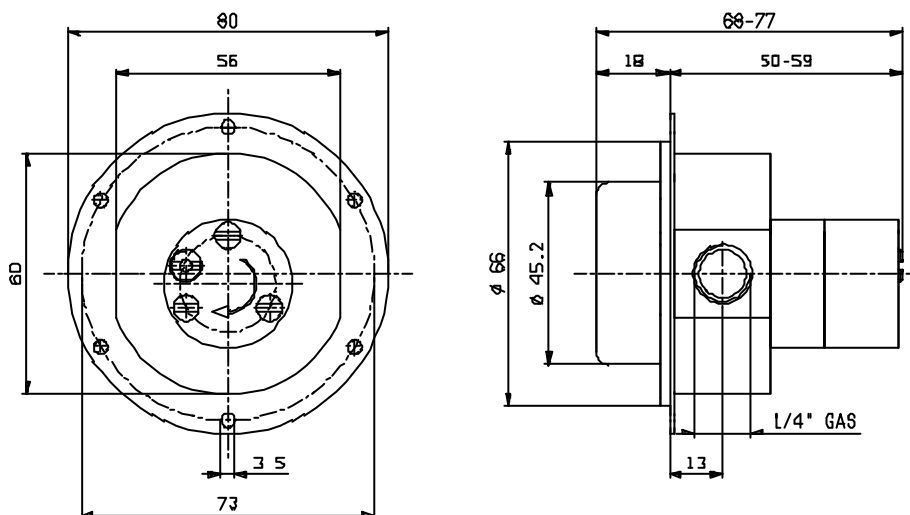
The magnet drive principle provides for a totally sealed pump chamber, which is able of handling a wide range of corrosive liquids with a high degree of safety; the housing of the pump and the internal metal parts are in AISI 316 stainless steel; the gears are available in PTFE, Ryton or Peek.

In operation the MGK 200 series pumps are silent and pulsation-free, and capable of operating with relatively high temperature liquids i.e.120 C.(248 F) The principle of the magnetic drive comprises an inner magnet embodied in the pump and connected to the driving gear and to an outer magnet which is connected to the motor shaft.

The pole-to-pole alignment of the two magnets provides the driving motion to the pump. Decoupling will occur when the pump load exceeds the coupling torque between the magnets. The inlet and outlet ports have 1/4" GAS female threads; the pump can be supplied with a by pass valve.

Main Applications

- medical and surgical equipments
- Hemodialysis apparatus
- Seal flush
- Laser apparatus
- Lubrication
- Cooling systems
- Laboratory instrumentation
- Water purification and ultrafiltration
- Sampling
- Food processing equipment



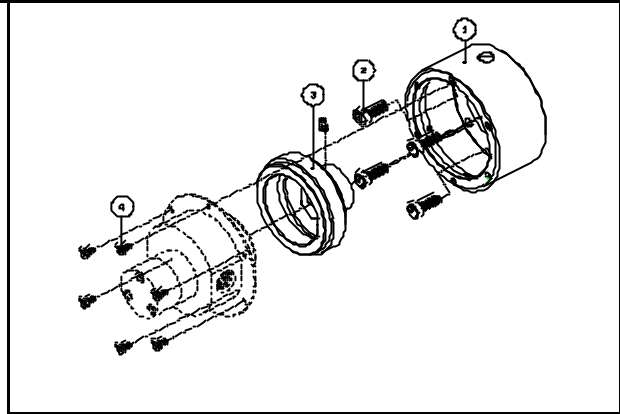
Fluid-o-Tech s.r.l.
20143 Milano - Via Morimondo, 23
Tel. (39) 02 8917071 - Fax (39) 02 89170799

Fluid-o-Tech International, Inc.
161 Atwater St. - Plantsville, CT 06479 USA
Tel. (860) 276 9270 - Fax (860) 620 0193

Fluid-o-Tech magnet drive gear pumps MGK series with increased pressure

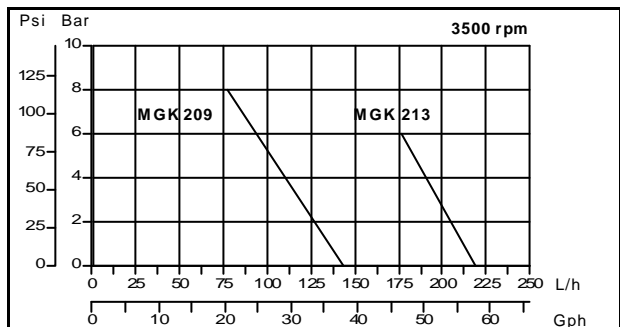
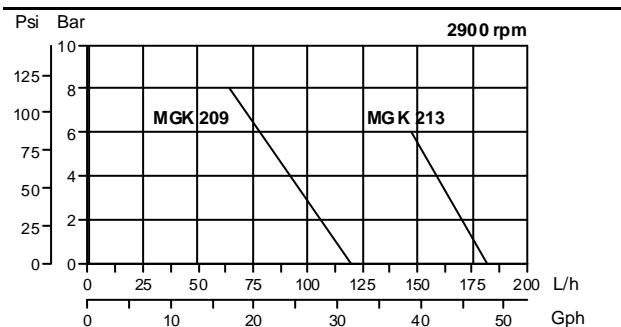
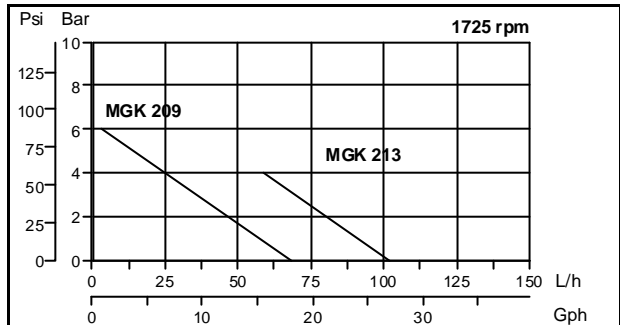
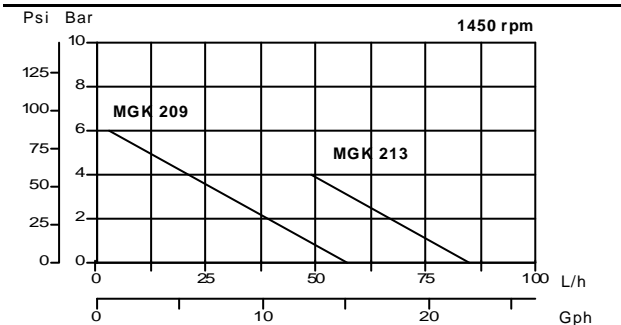
MGK
BULLETIN
06/98 Edition

Pos.	1	2	3	4	5	6
	MGK2	09	X	P	S	17
1	MGK2 = Magnet drive gear pump 200 series with stronger magnet					
2	04 = 4 mm gears width 09 = 9 mm gears width 13 = 13 mm gears width					
3	X = Body in stainless steel AISI 316					
4	T = PTFE gears/bushings P = Peek gears/bushings					
5	S=Without relief valve C=With relief valve					
6	17 = 1/4 " NPT in-line connections					



Legenda

Pos	Description	Code
1	Adapter LG12-M56-B14	6230580
2	Adapter screws M5X16	6230040
3	Driving magnet 9 mm bore	5230230
4	Pump screws M3X6	6210030



Fluid-o-Tech s.r.l.
20143 Milano - Via Morimondo, 23
Tel. (39) 02 8917071 - Fax (39) 02 89170799

Fluid-o-Tech International, Inc.
161 Atwater St. - Plantsville, CT 06479 USA
Tel. (860) 276 9270 - Fax (860) 620 0193