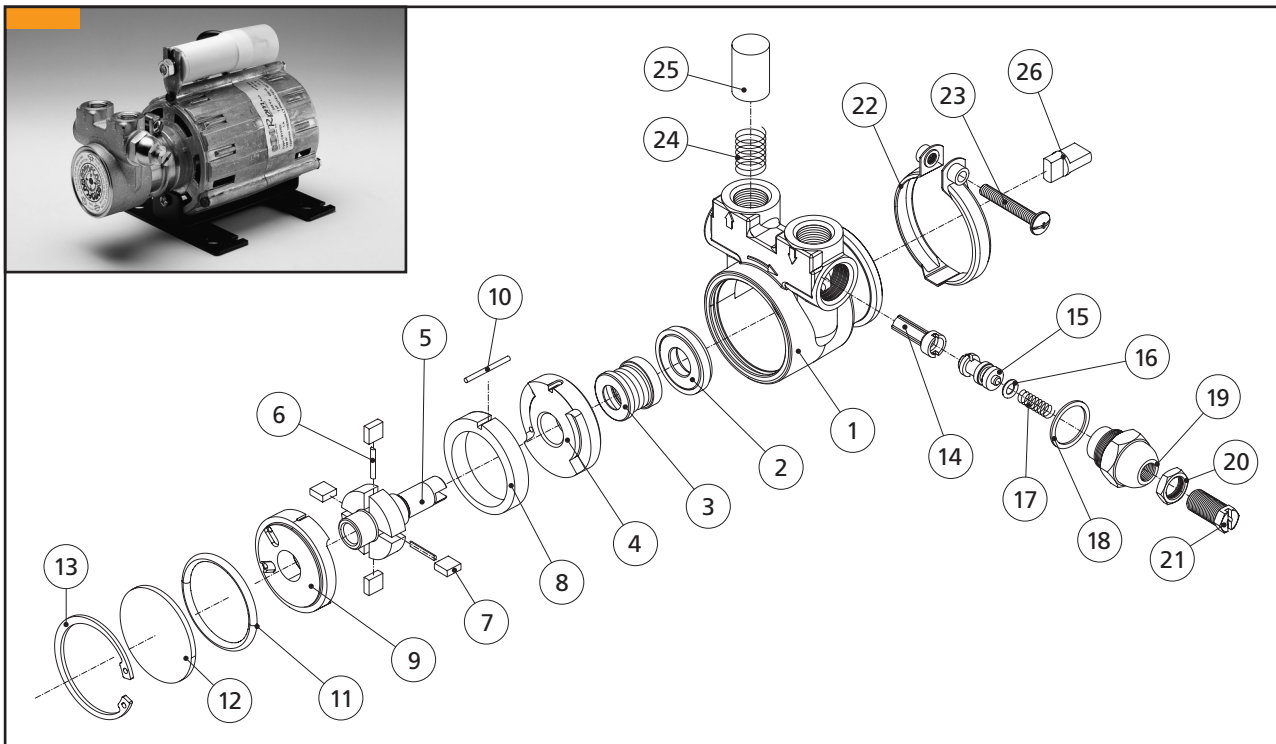


Positive displacement brass rotary vane pumps "Compact" series spare parts list



POS.	DESCRIPTION	MATERIAL	DWG	CODE	NOTES	
1	HOUSING	BRASS	24066	5001480		
		CERAMIC/NBR	22345	3000089	NSF	
2	SEAL COUNTERFACE	CERAMIC/VITON	22233	3000049		
		CERAMIC/EPDM	22614	6002360	WRAS	
		GRAPHITE/NBR	22689	6002830	NSF	
3	SEAL	GRAPHITE/VITON	22615	6002370		
		GRAPHITE/EPDM	22616	6002380	WRAS	
4	REAR FLANGE	GRAPHITE	22160	6000289		
5	ROTOR	S.S.	24019	5000279		
			22164	5000129	30-50 l/h	
			22461	6000819	70 l/h	
			22008	5000009	100 l/h	
			22085	5000039	150 l/h	
6	PIN	S.S.	22244	5000169	200 l/h	
7	VANE	GRAPHITE	24004	6000429		
			24023	5000650	30 l/h	
			24010	5000229	50 l/h	
8	LINER	GRAPHITE	24043	5000389	70 l/h	
			24003	5000209	100 l/h	
			24009	5000219	150 l/h	
			24021	5000580	200 l/h	
9	FRONT FLANGE	GRAPHITE	22686	6002790		
10	ALIGNMENT PIN	S.S.	24005	6000439		



Fluid-o-Tech
WWW.FLUIDOTECH.IT

Via Morimondo, 23
20143 Milano - Italy
Tel. (39) (02) 8917071
Fax (39) (02) 89170799

161 Atwater St.,
Plantsville CT (USA) 06479
Tel. (1) (860) 276-9270
Fax (1) (860) 620-0193

203, 2-17-19, Ebara, Shinagawa
Tokyo 142-0063, Japan
Tel. (81) (0) 3-3783-9660
Fax (81) (0) 3-3783-9661

Positive displacement brass rotary vane pumps "Compact" series spare parts list

POS.	DESCRIPTION	MATERIAL	DWG	CODE	NOTES
11	O-RING	NBR	22035	6000029	
		VITON	22119	6000219	
		EPDM	22474	6001450	
12	CAP	S.S.	22423	6001150	
13	SEEGER	STEEL	22036	6010019	
14	OPEN BY PASS VALVE	BRASS	22307	3000059	
		PLASTIC	22541	3000220	
	SOLID BY PASS VALVE	BRASS	22306	6000360	
15	BY PASS PLUNGER	PLASTIC	22540	6001950	
		BRASS	22522	6001840	
16	O-RING BY PASS PLUNGER	PLASTIC	22527	6001860	
		NBR	22055	6000069	
		VITON	22120	6000229	
17	SPRING	EPDM	22475	6001460	
		S.S.	22505	6001660	
18	WASHER	NYLON®	22054	6000049	
		PTFE	22666	6002630	WRAS
19	BALANCED BY PASS NUT	BRASS	22521	6001830	
20	BALANCED BY PASS NUT	BRASS	22168	6000220	
21	BALANCED BY PASS SCREW	BRASS	22523	6001850	
22	CLAMP	S.S.	22109	6000189	
23	CLAMP SCREW	S.S.	22549	6001980	
24	RETAINER SPRING	S.S.	22023	6000090	
25	CAP	SPONGE	22044	6000110	
26	COUPLING	BRASS	24024	6000910	

SPARES – COMPACT – 4/04 Ed.