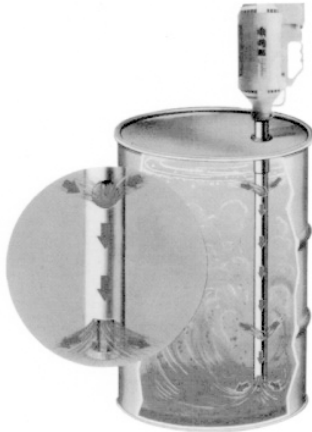


TM Series

D R U M M I X E R

Light to Medium Viscosity

The TM Series Drum Mixer is a 4-blade, turbine drum mixer ideal for mild corrosives, solvents, or flammables of light to medium viscosity.



Features

- Sealed
- Turbine mixing and blending
- Non-aerating, non-vortexing circulation
- Loosens and suspends bottom settlements
- Handles corrosive materials
- Tube interchangeable with choice of motors

Performance

- 14 gpm (53 L/min) circulation
- Up to 1,000 cps
- Maximum 200°F (93°C)

Tube Specifications



MODEL	TUBE				SEAL	SHAFT	INTERNALS	
	MATERIAL	DIAMETER		LENGTH				
		in	cm	in				cm
TMS	316SS	2"	5.1 cm	40	102	Graphite filled PTFE	316 SS	PTFE and 316SS

Motor Specifications



MODEL	TYPE	CERTIFICATIONS	ELECTRICAL REQUIREMENTS	OUTPUT	RPM
M6X	Air*	CE		3/4 hp	300-3,000
M7T	TEFC	CSA	110VAC/50-60 Hz	1/4 hp	3450
M7X	Exproof	CSA	110VAC/50-60 Hz	1/4 hp	3450
M8T	IP54	CE	220VAC/50-60 Hz	180 watts	2850-3450

Electric motors are available in 110V or 220V, Single Phase, 50-60 Hz. All are equipped with 12 ft. (336 cm) cord, circuit breaker with manual reset, internal cooling fan, and built-in on/off switch. Motors are rated continuous duty.

NOTE: When pumping flammables, use explosionproof motors on stainless steel tubes with a static protection kit #A100835

* Non-Electrical operation means the possibility of explosion from igniting flammable gases is reduced.



FINISH THOMPSON INC.

921 Greengarden Road • Erie, PA 16501-1591 U.S.A.
Ph 814-455-4478 • Fax 814-455-8518

Email fti@finishthompson.com • www.finishthompson.com

Toll Free USA & Canada 1-800-934-9384
Literature I.D. No. - FT95-560E

