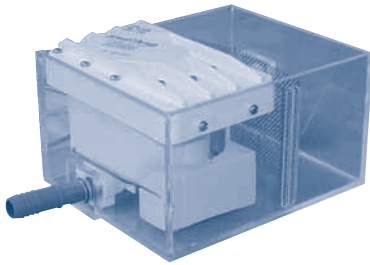


SHOWER SUMPS WITH PUMPS

LOVETT



VSS Series

900 GPH, 12, 24 AND 32 VDC SHOWER SUMP

Lovett's shower sump incorporates a patented two-belt drive system that transmits power from motor shaft to pump shaft via pulleys all within the pump housing's trapped air cavity. This air pocket eliminates the need for a shaft seal to wear or corrode, the most common cause of pump failure. Lovett pumps are also unique because they offer repair parts. Service kit #LV 3200 (belts, switch and gasket). Replacement belt only #LV 2101.

Model Number	Volts	Max GPH	Amps	Inlet Port	Outlet Port Options	Dimensions (H x W x L)
LV 12VSS	12 vdc	900	4	1 1/2" Barb	3/4" Barb	5 3/4" x 9 1/2" x 7 3/4"
LV 24VSS	24 vdc	900	2	1 1/2" Barb	3/4" Barb	5 3/4" x 9 1/2" x 7 3/4"
LV 32VSS	32 vdc	900	2	1 1/2" Barb	3/4" Barb	5 3/4" x 9 1/2" x 7 3/4"
LV 12VSSRP	12 vdc	900	4	Replacement pump and motor for LV12VSS		
LV 24VSSRP	24 vdc	900	2	Replacement pump and motor for LV24VSS		
LV 32VSSRP	32 vdc	900	2	Replacement pump and motor for LV32VSS		

CONTENTS

ENGINE COOLING

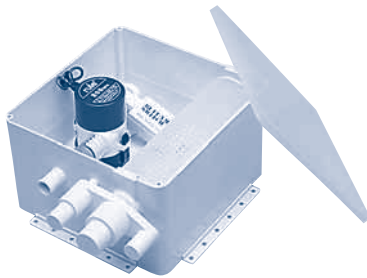
INDEX

HOME

NEXT

BACK

RULE



97 and 98 Series

500/800 GPH, 12 AND 24 VDC SHOWER SUMP

The Rule shower sumps come in two flow rates (500 and 800 gallons per hour) and voltages (12 and 24 vdc). They offer a compact size, easily cleaned strainer, and the model #RU 98 offers multiple inlet ports for various sized lines (3/4", 1", 1 1/8" and 1 1/2" barbs). Both models utilize Rule's standard bilge pumps and Rule-A-Matic switches that are easily replaced when required.

Model Number	Volts	Max GPH	Amps	Inlet Port	Outlet Port Options	Dimensions (H x W x L)
RU 97A	12 vdc	500	2	1 1/2" Barb	3/4" Barb	8 1/4" x 9 1/2" x 5 1/2"
RU 97A-24	24 vdc	500	1	1 1/2" Barb	3/4" Barb	8 1/4" x 9 1/2" x 5 1/2"
RU 98A	12 vdc	800	3	3/4", 1", 1 1/8" and 1 1/2" Barb	3/4" Barb	8 1/4" x 11 1/4" x 5 1/2"
RU 98A-24	24 vdc	800	1.5	3/4", 1", 1 1/8" and 1 1/2" Barb	3/4" Barb	8 1/4" x 11 1/4" x 5 1/2"

JOHNSON



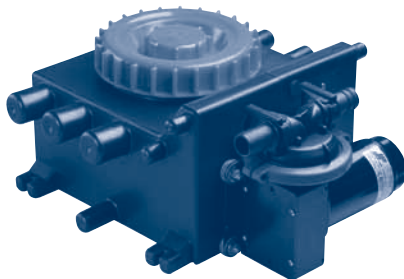
57151 Series

850 GPH, 12 AND 24 VDC SHOWER SUMP

The Johnson Marine shower sump is designed to meet the higher demands from today's boating industry. Features include an 850 gph cartridge-style bilge pump along with the Ultima bilge switch for dependability. This system is also equipped with a check-valve on the outlet port and an easy-clean mesh intake strainer.

Model Number	Volts	Max GPH	Amps	Inlet Port	Outlet Port Options	Dimensions (H x W x L)
JS 57151	12 vdc	850	3.4	3/4", 1", 1 1/8" and 1 1/2" Barb	3/4" Barb	5 3/4" x 11 1/2" x 8 1/4"
JS 57151R-24	24 vdc	850	2	3/4", 1", 1 1/8" and 1 1/2" Barb	3/4" Barb	5 3/4" x 11 1/2" x 8 1/4"

JOHNSON



Pump with Gray Water Tank

SHOWER, BILGE AND WASTEWATER PUMP, 12 AND 24 VDC

Johnson Marine's Viking Power 16 is specifically designed to pump wastewater. This pump features a single diaphragm, "clog-free" design and can self-prime up to 9.8 feet. Quiet operation and flexibility of installation make this pump an ideal choice for shower drain, bilge and wastewater. Available with optional Gray water tank (model #09-13384). Designed to be used as collection tank for waste water from showers, sinks and dish washing machines. Tank includes an Ultima Switch for automatic operation and easily connect to any 12/24 vdc pump up to 20 amps.

Model Number	Volts	Max GPH	Amps	Inlet Port	Outlet Port Options	Dimensions (H x W x L)
JS 10-13350-03	12 vdc	240	2.3	3/4", 1" Barb	3/4", 1" Barb	4 3/4" x 9 1/4" x 7 3/8"
JS 10-13350-04	24 vdc	240	1.2	3/4", 1" Barb	3/4", 1" Barb	4 3/4" x 9 1/4" x 7 3/8"