

ENGINE COOLING / PARTS BREAKDOWN

CONTENTS

ENGINE COOLING

INDEX

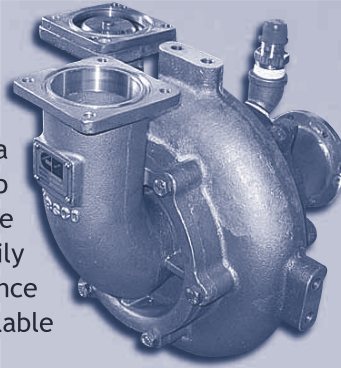
HOME

NEXT

BACK

JABSCO VORTEX PUMPS ON CUMMINS K38 ENGINES

Jabsco's Vortex engine cooling pump utilizes a double action flexible impeller for priming and a centrifugal impeller for flow. It will provide flows up to 400 gpm and pressures up to 48 psi. This unique open impeller design allows sand and silt to easily pass through with little or no wear or performance degradation. Major and minor service kits are available for field repair.



ENGINE / GENERATOR BRAND INDEX

Aifo Iveco	138
Alaska Diesel	116, 117
Beta	135
BMW	111
Caterpillar	108-111
Chris-Craft	132, 133, 137
Chrysler	96, 134, 138
Commander	138
Correct Craft	138
Crusader	131
Cummins	105-108
Daytona	138
Detroit Diesel	102-104
Escort	138
Flagship	137
Ford Lehman	126
Glastron	137
Gray	136, 137
Hino	129
Indmar	130, 139
Isuzu	139
John Deere	104, 116, 138
Kilopac	139
Kohler	118, 119
Kubota	139
Lancing	139
Man	105
Marine Power	130, 139
Max Engel	138
Mercedes	111
MerCruiser	96, 128, 129
Nanni	139
North American	111
Northern Lights	116, 117
OMC	96, 139
Onan	122-124
Osco	140
Palmer	140
Pathfinder	140
Peninsular	140
Perkins	124, 125
Phasor	116
Pleasurecraft	96, 130
Star Power	129
Universal	126, 127
US Marine	140
Vetus den Ouden	140
Volvo	96, 112-116
Westerbeke	120, 121
Yamaha	140
Yanmar	119, 120

RAW WATER STRAINER

Depco stocks a complete line of raw water strainers and service parts. Perko's bronze 493 series strainers include sizes from 1/2" to 2 1/2" ports (see page 66).

Groco's bronze ARG and SA series include sizes from 1/2" to 3" ports (see pages 67 and 160). Groco's bronze SE series meets ABS requirements and include sizes from 4" to 6" ports (see page 68). Depco also stocks a wide variety of economical plastic strainers for raw water, fresh water or bilge suction applications (see pages 65 and 66).



ENGINE BRAND IMPELLER CROSS REFERENCES

Years of effort in identifying proprietary engine cooling pumps, parts and replacement impellers have resulted in volumes of reference material in our marine department. Some of this wealth of information on impellers has been reproduced in this catalog. If you don't find a cross reference for your impeller give us a call. We'll utilize our experience, search our vast library, or call on our industry contact to match out and identify the source for your impeller.

IMPELLER CROSS REFERENCE

Caterpillar	111
Chris-Craft	133
Crusader	131
Cummins	105
Detroit Diesel	104
Gray Marine	137
Hino	129
Kohler	118
Man	105
MerCruiser	129
Onan	124
Perkins	124
Pleasurecraft	130
Universal	127
Volvo	116
Westerbeke	120
Yamaha	140

NEED AN ODDBALL OR DISCONTINUED PUMP REBUILT?

Here are just a few of the unusual pumps we've brought back to life. From old gear pumps from the 40's to experimental pumps off high performance engines, Depco has the expertise, parts and machine shop and the patience to get you back on the water!

