

JABSCO AND GIANNESCHI DIESEL TRANSFER

CONTENTS

ENGINE COOLING

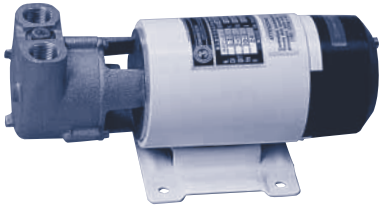
INDEX

HOME

NEXT

BACK

G & R BY GIANNESCHI



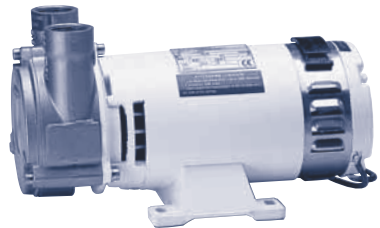
ACB Series

LIQUID RING PUMPS FOR DIESEL TRANSFER

The ACB series G & R pumps by Gianneschi utilizes the dependable self-priming liquid ring design. They are constructed of bronze and come with continuous use heavy duty motors. Common applications include diesel transfer, fuel polishing, washdown and reverse osmosis feed.

Model Number	Volts	Hertz	Max GPM	Max PSI	Inlet /Outlet
GIA ACB61E-12V	12 vdc	—	5.3	26	1/2" FPT
GIA ACB61E-24V	24vdc	—	5.3	26	1/2" FPT
GIA ACB80E-12V	12 vdc	—	10.5	50	3/4" FPT
GIA ACB80E-110V	110 vac	60	10.5	50	3/4" FPT
GIA ACB80E-230V	230 vac	60	10.5	50	3/4" FPT
GIA ACB90E-24V	24 vdc	—	13.2	45	1" FPT
GIA ACB331-230V	230 vac	50/60	36.6	56	1 1/4" FPT

G & R BY GIANNESCHI



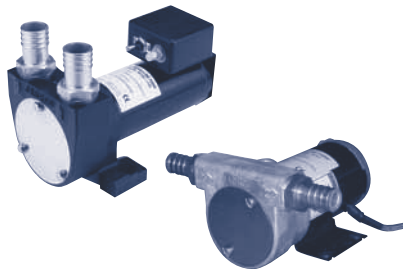
CP Series

REVERSIBLE LIQUID RING PUMPS FOR DIESEL TRANSFER

The CP series G & R pumps by Gianneschi utilizes the dependable self-priming liquid ring design and are reversible. This enables the user to empty/fill or balance ballast between onboard tanks. They are constructed of bronze and come with continuous duty motors.

Model Number	Volts	Hertz	Max GPM	Max PSI	Inlet /Outlet
GIA CP20-12V	12vdc	—	6.6	17	3/4" FPT
GIA CP20-24V	24vdc	—	6.6	17	3/4" FPT
GIA CP25-1A-24V	24vdc	—	19	16	1" FPT
GIA CP25-1A-24V	110vdc	60	19	16	1" FPT
GIA CP32A-24V	24vdc	—	26.4	20	1 1/4" FPT
GIA CP32N-110V	110vdc	60	26.4	20	1 1/4" FPT
GIA CP40-24V	24vdc	—	47.5	18	1 1/2" FPT
GIA CP40	3 phase	50/60	47.5	18	1 1/2" FPT

JABSCO



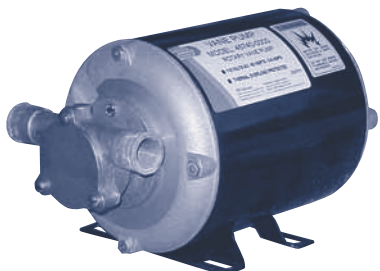
DC Vane Design

DC VANE PUMPS FOR DIESEL TRANSFER

These Jabsco high volume pumps are available in 12 and 24 vdc and 9, 14 and 20 gpm flows. The 50130 series has the added feature of an internal by-pass. This allows the fuel to be by-passed within the pump while the discharge line is restricted or shut-off during operation. This feature enables the user to start and stop the flow with a nozzle at the end of the hose, eliminating the need of controlling the flow with the power switch.

Model Number	Volts	Duty	Amp Draw	Max GPM	Inlet/Outlet Ports	Dimensions (H x W x L)
JA 50130-1000	12 vdc	35 Minutes	13	9	3/4" Barb - Horizontal	4" x 7" x 6 3/8"
JA 50130-1100	24 vdc	35 Minutes	6	9	3/4" Barb - Horizontal	4" x 7" x 6 3/8"
JA 23870-1200	12 vdc	35 Minutes	13	9	3/4" Barb - Vertical	4 1/2" x 5 1/2" x 7"
JA 23870-1300	24 vdc	35 Minutes	6	9	3/4" Barb - Vertical	4 1/2" x 5 1/2" x 7"
JA VR050-1022	12 vdc	Continuous	12	14	1" Barb - Vertical	5 3/4" x 5" x 8 1/2"
JA VR050-1122	24 vdc	Continuous	6	14	1" Barb - Vertical	5 3/4" x 5" x 8 1/2"
JA VR100-1122	24 vdc	Continuous	20	25	1 1/4" Barb - Vertical	7 1/4" x 5 3/4" x 10 1/2"

JABSCO



AC Vane Design

115 VAC DIESEL TRANSFER PUMP

The Jabsco 115 vac 18685-0000 pump will empty a 55 gallon drum of diesel in 8 minutes! It comes with a 6-foot power cord and has 1/2" FPT internal ports with 1" external hose barsbs. The service kit includes the vanes, rotor, o-ring and seal and can be ordered under the number JA 90200-0001.

Model Number	Volts	Max GPM	Inlet/Outlet Ports	Dimensions (H x W x L)
JA 18685-0000	115 vac	7	1/2" FPT and 1" Slip-On	6" x 4 3/4" x 9 1/2"