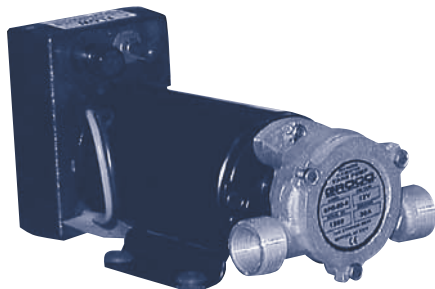


# GROCO OIL CHANGE / DIESEL TRANSFER

- CONTENTS
- ENGINE COOLING
- INDEX
- HOME
- NEXT
- BACK

## GROCO



Reversible Vane Design

## REVERSIBLE VANE FOR OIL CHANGE/DIESEL TRANSFER

These pumps come in two sizes and three DC voltages. You can construct your own oil change manifold system by matching your choice of pump with a manifold shown at the bottom of page 42. Both pump ports are threaded 3/4" male GHT and 1/2" female NPT. See page 159 for service parts.

Model Number	Volts DC	Free Flow Diesel GPM/Amps	Free Flow Oil GPM/Amps
GC SPO-60R 12V	12V	7 / 6.5	4.5 / 17
GC SPO-60R 24V	24V	7 / 4	4.5 / 11
GC SPO-80R 12V	12V	7.5 / 12	5 / 22
GC SPO-80R 24V	24V	7.5 / 7	5 / 13

## GROCO



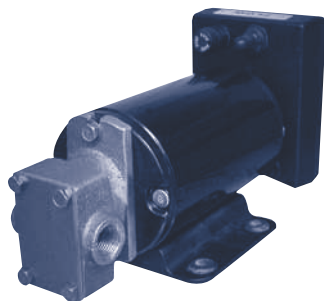
Continuous Duty Vane Design

## VANE PUMPS FOR OIL CHANGE / DIESEL TRANSFER

These versatile pumps come in two sizes and three DC voltages. They are used worldwide for oil change and diesel transfer and will operate with or without a manifold. Both pump ports are threaded 3/4" male GHT and 1/2" female NPT. See page 159 for service parts.

Model Number	Volts DC	Free Flow Diesel GPM/Amps	Free Flow Oil GPM/Amps
GC SPO-60 12V	12V	7 / 6.5	4.5 / 17
GC SPO-60 24V	24V	7 / 4	4.5 / 11
GC SPO-80 12V	12V	7.5 / 12	5 / 22
GC SPO-80 24V	24V	7.5 / 7	5 / 13

## GROCO



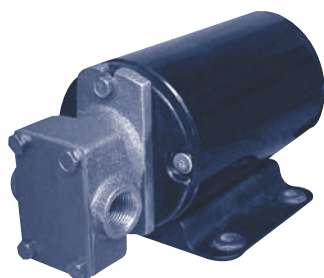
Reversible Gear Design

## REVERSIBLE GEAR FOR OIL CHANGE/DIESEL TRANSFER

Groco's new GPB-R series reversible bronze gear pump was designed specifically for the rigors of viscous oil change and long duty diesel transfer. They are self-priming and come equipped with an "Ignition Protected" motor that has a 316 stainless steel shaft. The integral reversing toggle switch allows instant flow reversing to facilitate oil changing or diesel fuel tank ballast adjustment.

Model Number	Volts	Max GPM	Fuse Size	Inlet/Outlet Ports	Dimensions (H x W x L)
GC GPBR-1-12V	12V	3.5	20 amps	3/8" FPT	4.46" x 4.04" x 8.62"
GC GPBR-1-24V	24V	3.5	10 amps	3/8" FPT	4.46" x 4.04" x 8.62"

## GROCO



Gear Design

## GEAR PUMP FOR OIL CHANGE/DIESEL TRANSFER

Groco's new GPB series bronze gear pump was designed specifically for the rigors of viscous oil change and long duty diesel transfer. They are self-priming and come equipped with an "Ignition Protected" motor that has a 316 stainless steel shaft.

Model Number	Volts	Max GPM	Fuse Size	Inlet/Outlet Ports	Dimensions (H x W x L)
GC GPB-1-12V	12V	3.5	20 amps	3/8" FPT	3.43" x 4.04" x 6.72"
GC GPB-1-24V	24V	3.5	10 amps	3/8" FPT	3.43" x 4.04" x 6.72"