

RULE SUBMERSIBLE BILGE PUMPS

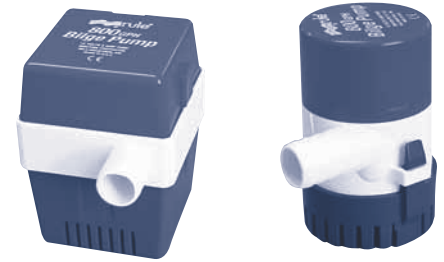
CONTENTS

360 - 1100 GPH PUMPS IN 12 AND 32 VDC

These traditional bilge pumps are activated by a panel or float switch purchased separately (see page 28 or 34). All models are totally submersible, ignition protected, and incorporate an anti-air lock feature.

32 vdc Model	24 vdc Model	12 vdc Model	GPH at 0 Feet	Max. Head	12 vdc Amps	Hose Dia.	Dimensions (H x W x L)
—	—	RU 24	360	12'	2 1/2	3/4"	3 1/2" x 2 3/8" x 2 3/8"
—	RU 26D	RU 25D	500	12'	2 1/2	3/4"	3 1/2" x 2 3/8" x 2 3/8"
—	RU 21R	RU 20R	800	12'	4	3/4"	3 3/4" x 2 3/8" x 2 3/8"
—	—	RU 20F	800	12'	4	3/4"	4" x 2 1/2" x 2 1/2"
—	RU 28D	RU 27D	1100	12'	5	1 1/8"	3 7/8" x 2 3/8" x 2 3/8"
—	—	RU 20A	1000	12'	4	1 1/8"	4" x 2 1/2" x 2 1/2"

RULE



Standard Bilge Pumps

INDEX

HOME

NEXT

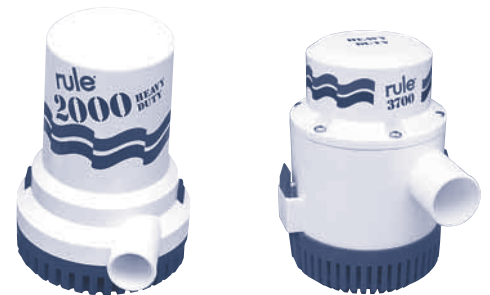
BACK

1500 - 8000 GPH PUMPS IN 12, 24 AND 32 VDC

These traditional bilge pumps are activated by a panel or float switch purchased separately (see page 28 or 34). All models are totally submersible, ignition protected, and incorporate an anti-air lock feature.

32 vdc Model	24 vdc Model	12 vdc Model	GPH at 0 Feet	Max. Head	12 vdc Amps	Hose Dia.	Dimensions (H x W x L)
—	RU 03	RU 02	1500	12'	7	1 1/8"	6" x 4 1/4" x 4 1/4"
RU 11	RU 12	RU 10	2000	21'	12	1 1/8"	6" x 4 1/4" x 4 1/4"
RU 15A	RU 16A	RU 14A	3700	25'	20	1 1/2"	7 1/4" x 4 7/8" x 4 7/8"
RU 56D-32	RU 56D-24	RU 56D	4000	26'	20	2"	7 3/4" x 4 7/8" x 4 7/8"
—	—	RU 174D	8000	27'	40	3"	7 1/4" x 12" x 4 7/8"

RULE



Heavy-Duty Bilge Pumps

COMPUTERIZED PUMPS IN 12 VDC AND 110 VAC

Rule's computerized bilge pumps operate on the principle of impeller resistance. Every 2 1/2 minutes the pump operates to check for water. If water is present, amp draw is higher and the pump remains in operation. Once the pump has evacuated the water the amp draw drops and the pump shuts off.

Model Number	GPH at 0 Feet	Max. Head	Volts	12 vdc Amps	Hose Dia.	Dimensions (H x W x L)
RU 25S	500	12'	12 vdc	2.5A	3/4"	4" x 2 3/8" x 2 3/8"
RU 27S	1100	12'	12 vdc	5A	1 1/8"	4 1/2" x 2 3/8" x 2 3/8"
RU 53S	2000	21'	12 vdc	12A	1 1/8"	7 3/4" x 4 7/8" x 4 7/8"
RU 56S	4000	27'	12 vdc	20A	2"	9 1/4" x 4 7/8" x 4 7/8"
RU 174S	8000	27'	12 vdc	40A	3"	9 1/4" x 12" x 4 7/8"
RU A53S-18	1800	18'	110 vac	—	1 1/8"	7 3/4" x 4 7/8" x 4 7/8"
RU A55S-18	2800	22'	110 vac	—	1 1/2"	8 3/4" x 4 7/8" x 4 7/8"

RULE



Computerized Series

RULE-MATE AUTOMATIC PUMPS IN 12 AND 24 VDC

These pumps feature a non-mercury float switch in a single, compact housing. As the water level rises so does the float switch activating the pump when the water level reaches 2 1/8". There is no on/off cycling and therefore no power use until the pump comes on. The pump remains on until the float drops and the pump senses lower amp draw caused by the absence of water. Now available in 24 vdc.

24 vdc Model	12 vdc Model	GPH at 0 Feet	Max. Head	12 vdc Amps	Hose Dia.	Dimensions (H x W x L)
RU RM-500-24	RU RM-500	500	12'	2.5	3/4"	4" x 2 1/2" x 5"
RU RM-750-24	RU RM-750	750	12'	4	3/4"	4" x 2 1/2" x 5"
RU RM-1100-24	RU RM-1100	1100	12'	5	1 1/8"	4" x 2 1/2" x 5"
—	RU RM-1500	1500	12'	7	1 1/8"	6" x 4 7/8" x 7 1/4"
RU RM-2000-24	RU RM-2000	2000	16'	12	1 1/8"	6" x 4 7/8" x 7 1/4"

RULE



Rule-Mate Automatic Series