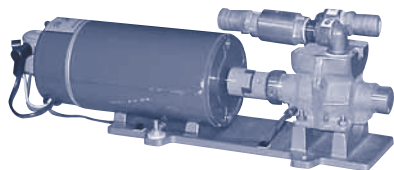


- CONTENTS
- ENGINE COOLING
- INDEX
- HOME
- NEXT
- BACK

## GROCO



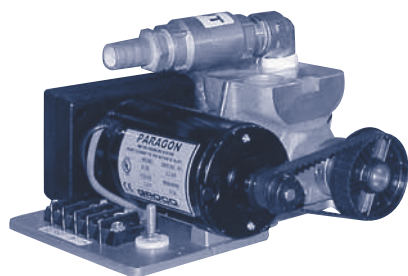
Paragon Senior

### 11 GPM PARAGON SENIOR FOR VESSELS 45' AND LARGER

The Paragon Senior is the premier water system for vessels 45 feet or larger. Each pump is ignition protected and supplied with a 30-50 psi waterproof pressure switch. Accessories include a pressure gauge, 1" strainer, and a solid-state dry tank switch. An accumulator tank is recommended (see page 20). See page 158 for service parts.

Model	Max. GPM	Volts	Breaker Size	Inlet & Outlet	Dimensions (H x W x L)
GC PSR-12V	11	12 vdc	50 amps	1" ID Hose	6.5" x 5" x 20.5"
GC PSR-24V	11	24 vdc	30 amps	1" ID Hose	6.5" x 5" x 20.5"
GC PSR-32V	11	32 vdc	20 amps	1" ID Hose	6.5" x 5" x 20.5"
GC PSR-115V	11	115 vdc	10 amps	1" ID Hose	6.5" x 5" x 20.5"

## GROCO



Paragon Junior

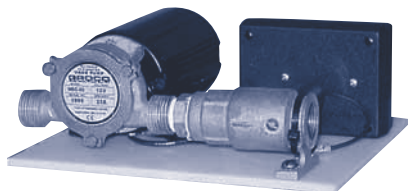
### 7 GPM PARAGON JUNIOR FOR UP TO 45' VESSELS

The Paragon Junior is an ideal water system for vessels up to 45 feet. Each pump is ignition protected and supplied with a 20 - 40 psi waterproof pressure switch. Accessories include a pressure gauge, 3/4" strainer, a solid-state dry tank switch and an optional one gallon accumulator tank. See page 158 for service parts.

Model	Max. GPM	Volts	Breaker Size	Inlet & Outlet	Dimensions (H x W x L)
GC PJR-12V	7	12 vdc	30 amps	3/4" ID Hose	7" x 8.25" x 8.5"
GC PJR-24V	7	24 vdc	20 amps	3/4" ID Hose	7" x 8.25" x 8.5"
*GC PJR-A 12V	7	12 vdc	30 amps	3/4" ID Hose	7" x 8.25" x 8.5"
*GC PJR-A 24V	7	24 vdc	20 amps	3/4" ID Hose	7" x 8.25" x 8.5"

\* These models come with a one gallon accumulator tank

## GROCO



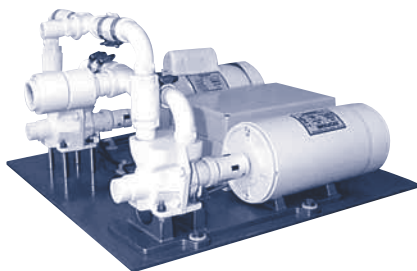
WSC Series

### 7 AND 7.5 GPM SLIDING VANE PUMP WITH ACCUMULATOR

This high volume water system pump comes complete with waterproof 18 - 38 psi switch, ignition protected motor, pressure gauge, dry-tank switch, 3/4" strainer and a one gallon accumulator tank (not shown). See page 159 for service parts.

Model	Max. GPM	Volts	Max. Amps	Inlet	Outlet	Dimensions (H x W x L)
GC WSC-60 12V	7	12 vdc	25	3/4" GHT / 1/2" FPT	3/4" FPT	4.75" x 6.50" x 9.50"
GC WSC-60 24V	7	24 vdc	15	3/4" GHT / 1/2" FPT	3/4" FPT	4.75" x 6.50" x 9.50"
GC WSC-80 12V	7.5	12 vdc	30	3/4" GHT / 1/2" FPT	3/4" FPT	4.75" x 6.50" x 9.50"
GC WSC-80 24V	7.5	24 vdc	15	3/4" GHT / 1/2" FPT	3/4" FPT	4.75" x 6.50" x 9.50"
GC WSC-80 32V	7.5	32 vdc	10	3/4" GHT / 1/2" FPT	3/4" FPT	4.75" x 6.50" x 9.50"

## GROCO



AC/DC Parallelagon

### AC/DC PARALLELAGON WATER SYSTEM

The Parallelagon by Groco is the first parallel pump system complete with solid-state reliability for pressure control and dry-tank protection. This system combines a DC (12, 24 or 32 vdc) and an AC (115 or 230 vac) Paragon Senior. The AC Paragon is the primary pump and operates whenever AC power is present while the DC Paragon operates whenever AC power is absent. Both pumps deliver up to 11 gpm and operate in the 30-50 psi pressure range. A single pressure transducer (not a pressure switch) controls the on-off operation of both pumps.

Model	Max. GPM	AC Volts	DV Volts	Inlet & Outlet	Dimensions (H x W x L)
GC PSR-1-Volts	11	115 or 230 vac	12, 24 or 32 vdc	1" ID Hose	12.79" x 20" x 24"