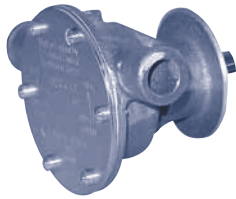


- CONTENTS
- ENGINE COOLING
- INDEX
- HOME
- NEXT
- BACK

JABSCO 10 - 37.5 HP Propulsion

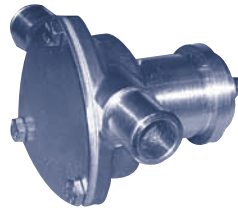


29460-1431

(Replaced by 29460-1631)

Part No.	Description	Qty
18653-0001	Impeller	1
2995-0000	Gasket	1
11830-0000	Cover	1
91002-0010	Cover Screw	6
10818	Cam	1
91002-0020	Cam Screw	1
SP2701-1006	Water Seal	1
SP2701-1006	Oil Seal	1
29467-0010	Shaft	1
SP2601-0457	Ball Bearing	2

JABSCO 10 - 37.5 HP Propulsion



29460-1631

Part No.	Description	Qty
18653-0001	Impeller	1
X5251-049	Cover O-Ring	1
29405-0000	Cover	1
29467-0020	Shaft	1
X3001-174F	Cover Screws	6
SP2701-1006	Water Seal	1
SP2701-1006	Oil Seal	1
SP2601-0457	Ball Bearing	2

JABSCO 10 - 37.5 HP Generator



29460-1301

Kubota

Part No.	Description	Qty
18653-0001	Impeller	1
2995-0000	Gasket	1
SP2701-1006	Water Seal	1
91002-0010	Cover Screw	6
2907-0000	Cam	1
91002-0020	Cam Screw	1
SP2701-1006	Oil Seal	1
SP2601-0457	Bearing	2
29467-0000	Shaft	1
11830-0000	End Cover	1

JABSCO 43-62 HP

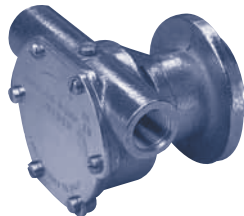


29500-1501

Part No.	Description	Qty
1210-0001	Impeller	1
3298-0000	Gasket	1
SP2700-1027	Seal	1
91002-0020	Cover Screw	6
490-0001	Cam	1
91003-0010	Cam Screw	1
SP2700-1027	Oil Seal	1
29516-0000	Shaft	1
7883-0000	Wearplate	1
11830-0000	Cover	1

JOHNSON

2KC / 8D / 7222 / BD 1005
BF 2803 / KC / KR



10-24326-01

Part No.	Description	Qty
810B	Impeller	1
05-02-101	Washer (Bearing)	2
05-04-621	Screw	2
01-45955	Washer (Seal)	1
05-34-131	Snap Ring	1
05-08-503	Ballbearing	2
05-06-521	O-Ring	1
05-29-139	Lip Seal	2
05-01-120	Washer (Cam)	1
05-04-114	Screw (Cam)	1
05-04-124	Screw	1
05-04-163	Screw (Cover)	6
01-45282	Cover	1
01-45284	Gasket	1
01-42389	Cam	1
01-35293	Shaft	1

JOHNSON

BSD333 / BSD678

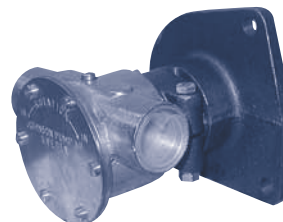


10-24244-1

Part No.	Description	Qty
1028B	Impeller	1
01-42445	Gasket	1
01-42679	Cam	1
05-04-107	Cam Screw	1
01-42441	Cover	1
05-04-174	Cover Screw	6
05-29-105	Seals	2
01-45181	Seal Spacer	1
05-06-501	Slinger	1
01-45753	Shaft	1
05-08-129	Ball Bearings	2
05-34-130	Snap Ring (LG)	1
05-34-105	Snap Ring (SM) Inner	1
05-34-21	Snap Ring (SM) Outer	1

JOHNSON

DOVER SERIES
2722 / 2725 / 2726

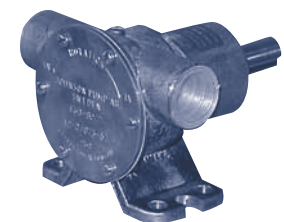


10-24139-4

Part No.	Description	Qty
1028B	Impeller	1
09-20-115	Mechanical Seal	1
05-34-105	Seal Snap Ring	1
05-01-121	Seal Washer	1
01-42445	Gasket	1
01-42441	End Cover	1
05-04-117	Cover Screw	6
01-42679	Full Cam	1
05-04-107	Full Cam Screw	1
01-42442	Cam	1
05-04-144	Cam Screw	1
01-42443	Wearplate	1
01-42400	Wearplate Pin	1
01-42402	Slinger	1
05-08-117	Ball Bearing	2
05-29-122	Bearing Seal	1
05-34-107	Snap Ring (SM)	1
05-34-117	Snap Ring (LG)	1
01-45324	Shaft	1
05-04-105	Body Clamp Bolt	1
05-01-115	Clamp Washer	1
05-05-115	Clamp Nut	1

F5B-8007

XLD418



10-24073-1

Part No.	Description	Qty
1027B	Impeller	1
01-45045	Shaft (17mm)	1
01-42398	Cover	1
01-42401	Gasket	1
01-42397	Cam Full Thickness	1
01-45014	Cam 1/2 Thickness	1
01-45046	Spacer Inner	1
01-45047	Spacer Outer	1
05-04-642	Screw (Cover)	6
05-04-117	Cam Screw (Full)	1
05-04-175	Cam Screw (1/2)	1
05-29-105	Lip Seal	1
05-06-501	O-Ring	1
05-08-128	Ball Bearing	2
05-34-130	Snap Ring	1
05-34-21	Snap Ring	1