

# CHRYSLER ENGINE PUMPS

CONTENTS

ENGINE COOLING

INDEX

HOME

NEXT

BACK

## SHERWOOD

LM318X, LM340 and 360



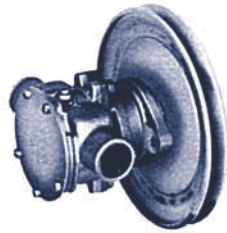
G-5 / G-7 / G-7B, (6 1/2" Pulley)  
G-50 (7 1/2" Pulley)

Chrysler # 3675763 (G-5) - Replaced by G-7B  
Chrysler # 4142878 (G-7) - Replaced by G-7B  
Chrysler # 2619212 (G-50)

| Sherwood No. | Description              | Qty |
|--------------|--------------------------|-----|
| 10615K       | Impeller                 | 1   |
| 12859        | Seal Assy                | 1   |
| 4264         | Seal Washer              | 1   |
| 12211        | Ball Bearing             | 2   |
| 12233        | Shaft (G-5, G-50)        | 1   |
| 13363        | Shaft (G-7, G-7B)        | 1   |
| 10944        | Cam                      | 1   |
| 10515C       | Cam Screw                | 1   |
| 12855        | Gasket                   | 1   |
| 12231        | O-Ring                   | 1   |
| 12857        | Cover Screw              | 3   |
| 12710        | Lock Washer              | 3   |
| 12856        | Wearplate                | 1   |
| 5133         | Bearing Spacer           | 1   |
| 4432         | Impeller Key             | 1   |
| 4258         | Snap Ring (SM)           | 3   |
| 4259         | Snap Ring (LG)           | 2   |
| 12326        | 6 1/2" Keyed Pulley (G5) | 1   |
| 15055        | Pulley 6 1/2" (G7, G7B)  | 1   |
| 12323        | Pulley 7 1/2" (G50)      | 1   |

## JABSCO

LM318X and LM340X



17200-0001 (7 1/2" Pulley)

Replaced by SH G-50

| Part No.   | Description  | Qty |
|------------|--------------|-----|
| 11979-0001 | Impeller     | 1   |
| 91003-0010 | Screw        | 5   |
| 14937-0000 | End Cover    | 1   |
| 10184-0000 | Gasket       | 1   |
| 10182-0000 | Cam          | 1   |
| 91004-0090 | Screw (Cam)  | 1   |
| 96080-0080 | Seal         | 1   |
| 17203-0000 | Brg. Housing | 1   |
| 14206-0000 | Shaft & Brg. | 1   |
| 17239-0000 | Spacer       | 1   |
| 18719-0000 | Ret. Ring    | 1   |
| 92400-0190 | Pulley       | 1   |
| 93100-0070 | Pin Roll     | 1   |

## SHERWOOD

Double Pocket Pump



D-55 (2 - 1", 2 - 1 1/4" Ports)  
D-60 / D-65 / D-75 (4 - 1" Ports)

Chrysler # 2847629 (D-55)  
Chrysler # 2847630 (D-60)  
Chrysler # 2847631 (D-65) - Replaced by D-60  
Chrysler # 2847632 (D-75) - Replaced by D-60

| Sherwood No. | Description                   | Qty |
|--------------|-------------------------------|-----|
| 9959K        | Impeller (Inner)              | 1   |
| 9959K        | Impeller (Outer D-60, 65, 75) | 1   |
| 10615        | Impeller (Outer D-55)         | 1   |
| 10927        | Seal Assy                     | 1   |
| 4257         | Ball Bearing                  | 1   |
| 11460        | Shaft (D-55)                  | 1   |
| 11459        | Shaft (D-60, 65, 75)          | 1   |
| 15883        | Cam (Inner)                   | 1   |
| 10944        | Cam (Outer D-55)              | 1   |
| 15883        | Cam (Outer D-60, 65, 75)      | 1   |
| 10609        | Gasket (Inner)                | 1   |
| 10612        | Gasket (Outer D-55)           | 1   |
| 10609        | Gasket (Outer D-60, 65, 75)   | 1   |
| 06333        | Bushing                       | 1   |
| 10625        | Wearplate                     | 1   |
| 4432         | Impeller Key                  | 2   |
| 11515        | Drive Key                     | 1   |
| 4258         | Snap Ring (SM)                | 3   |
| 4259         | Snap Ring (LG)                | 1   |

## JABSCO

Double Pocket Pump



10170-0011 (2 - 1", 2 - 1 1/4" Ports)  
10190-0011 (4 - 1" Ports)

| Part No.   | Description             | Qty |
|------------|-------------------------|-----|
| 1210-0001  | Impeller (Outer)        | 1   |
| 11979-0001 | Impeller (Inner 10170)  | 1   |
| 3085-0001  | Impeller (Inner 10190)  | 1   |
| 10178-0000 | Bearing Hsg.            | 1   |
| 10179-0000 | Wearplate               | 1   |
| 10187-0000 | Shaft (10190)           | 1   |
| 10180-0000 | Shaft (10170)           | 1   |
| 10183-0000 | Gasket (Outer)          | 1   |
| 10183-0000 | Gasket (Inner 10190)    | 1   |
| 10184-0000 | Gasket (Outer 10170)    | 1   |
| 10181-0000 | Sleeve (Inner)          | 1   |
| 490-0000   | Cam (Outer)             | 1   |
| 490-0000   | Cam (Inner 10190)       | 1   |
| 10182-0000 | Cam (Inner 10170)       | 1   |
| 91003-0070 | Screw (Cam Outer)       | 1   |
| 91003-0070 | Screw (Cam Inner 10190) | 1   |
| 91004-0090 | Screw (Cam Inner 10170) | 1   |
| 91401-0030 | Key                     | 1   |
| 18722-0000 | Ret. Ring               | 1   |
| 18724-0000 | Ret. Ring Brg.          | 1   |
| 913-0000   | Seal (Brg.)             | 1   |
| 92701-0160 | Seal (Outer)            | 1   |

## JABSCO

LM318 - LM340



18940-0010

| Part No.         | Description    | Qty |
|------------------|----------------|-----|
| 11979-0001       | Impeller       | 1   |
| 18836-1000       | Shaft          | 1   |
| 18753-0006       | Pulley         | 1   |
| 10182-0000       | Cam            | 1   |
| 18753-0005       | O-ring         | 1   |
| 96080-0080       | Seal           | 1   |
| 92600-0120       | Ball Bearing   | 2   |
| See Hardware Kit | Retaining Ring | 1   |
| See Hardware Kit | Roll Pin       | 1   |
| 91004-0090       | Cam Screw      | 1   |
| 18753-0001       | Screw Kit      | 1   |
| See Hardware Kit | Key            | 1   |
| 18753-0010       | Hardware Kit   | 1   |

## JABSCO

M46-4 and M47-4



8170

| Part No.                   | Description    | Qty |
|----------------------------|----------------|-----|
| 920-0001                   | Impeller       | 1   |
| 91003-0010                 | Cover Screw    | 6   |
| 11831-0000                 | Cover          | 1   |
| 3101-0000                  | Gasket         | 1   |
| 4156-0000                  | Wearplate      | 1   |
| 96080-0080                 | Seal           | 1   |
| 91004-0110                 | Cam Screw      | 1   |
| 3255-0000                  | Bearing Seal   | 1   |
| 92600-0060                 | Bearing        | 1   |
| 913-0000                   | Bearing Seal   | 1   |
| 18724-0000                 | Retaining Ring | 1   |
| 18713-0000                 | Retaining Ring | 1   |
| 3255-0000                  | Cam            | 1   |
| For 8170 Lip Seal Version: |                |     |
| 92700-0060                 | Seal           | 1   |
| 92000-0210                 | O-Ring         | 1   |
| 3166-0000                  | Seal Spacer    | 1   |
| 3180-0000                  | Slinger        | 1   |

## JABSCO

M80 Sea-V



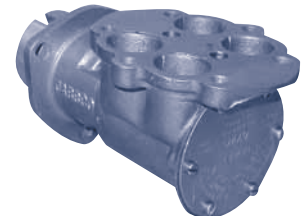
7120(RH) / 7320(LH)

Chrysler # E5839M / Chrysler # E5913M

| Part No.   | Description        | Qty |
|------------|--------------------|-----|
| 1210-0001  | Impeller           | 2   |
| 91002-0020 | End Cover Screw    | 6   |
| 11830-0000 | End Cover          | 1   |
| 3298-0000  | Gasket             | 1   |
| 7607-0000  | Cam/Wearplate Assy | 2   |
| 96080-0080 | Mechanical Seal    | 1   |
| 91003-0010 | Cam Screw          | 2   |
| 913-0000   | Bearing Seal       | 1   |
| 92600-0060 | Ball Bearing       | 1   |
| 18724-0000 | Snap Ring          | 1   |
| 7127-0000  | Shaft              | 1   |

## JABSCO

M81 Imperial V8



6740

Chrysler # E5714M

| Part No.   | Description     | Qty |
|------------|-----------------|-----|
| 1210-0001  | Impeller        | 2   |
| 3298-0000  | Gasket          | 1   |
| 92700-0060 | Seal            | 1   |
| 92000-0210 | Seal O-Ring     | 1   |
| 3166-0000  | Seal Spacer     | 1   |
| 3286-0000  | Slinger         | 1   |
| 92600-0060 | Ball Bearing    | 1   |
| 913-0000   | Bearing Seal    | 1   |
| 7607-0000  | Cam & Wearplate | 2   |
| 7038-0000  | Wearplate Only  | 2   |
| 91003-0010 | Cam Screw       | 2   |
| 11830-0000 | End Cover       | 1   |
| 91002-0020 | Cover Screws    | 6   |
| 6747-0000  | Shaft           | 1   |