

# MERCUISER ENGINE PUMPS

CONTENTS

ENGINE COOLING

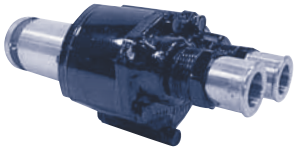
INDEX

HOME

NEXT

BACK

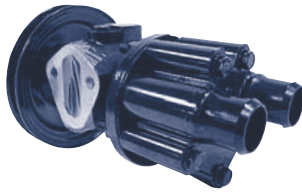
## MERCUISER (standard pump)



46-72774-A32

Part No	Description	Qty
46-807151-A14	New Style Body Kit	1
87637-A4	Cover	1
10-73275	Screw (Cover)	5
12-20084	Washer	5
27-94915	Gasket	1
94916	Wearplate	1
27-94914	Gasket (2 required)	1
19-59504	Plug	1
47-59362	Impeller	1
28-56662	Key	1
94576	Wearplate	1
25-94288	Quad Ring	1
46-94913A	Bearing Housing	1
26-90562	Seal (Water & Bearing)	2
30-72961	Ball Bearing	2
59501-A1	Shaft	1
53-23720	Snap Ring	1
26-72785	Oil Seal (Outer)	1
47530 (Hub)	807731 (Pulley)	1
25-33465	Body O-Ring	1

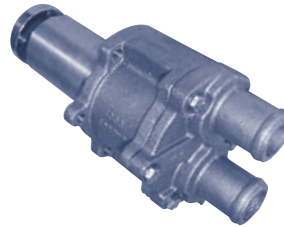
## MERCUISER (pump with fuel pump flange)



46-807151A-8

Part No	Description	Qty
46-807151-A14	Body Kit	1
10-74822	Screw (Cover)	3
10-807356	Screw (Cover)	2
12-814806	Washer	5
19-59504	Plug	1
47-59362	Impeller	1
28-56662	Key	1
94576	Wearplate	1
25-94288	Quad Ring	1
26-90562	Seal (Water & Bearing)	2
30-72961	Ball Bearing	2
59501-A1	Shaft	1
52-23720	Snap Ring	1
26-72785	Oil Seal (Outer)	1
807731	Pulley	1
25-33465	Body O-Ring	1

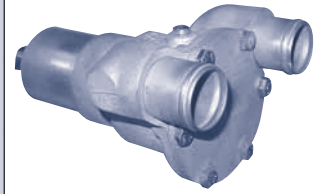
## JABSCO (all bronze replacement)



43210-0001

Part No	Description	Qty
17954-0001	Impeller	1
92650-0120	Pipe Plug 1/8"	1
18753-0314	Screw/Washer	5
43208-1000	End Plate	1
43205-1000	Gasket	1
43175-1000	Drive Key, Impeller	1
43176-1000	Cam/Wearplate	1
18753-0328	Seal	1
92000-0540	O-ring	1
43209-1000	Body	1
92000-0120	Slinger (O-Ring)	1
18753-0318	Bearings	2
43207-1000	Shaft	1
18753-0345	Retaining Ring	2
91401-0100	Woodruff Key	1
18753-0323	Retaining Ring	1

## MERCUISER

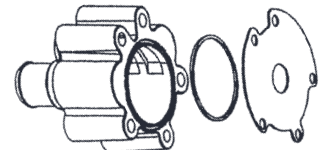


59155 (Casting #63450)

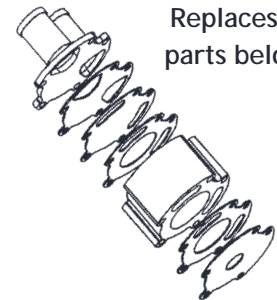
Part No	Description	Qty
47-59362	Impeller	1
59501-A1	Shaft	1
30-72961	Ball Bearing	1
26-72785	Oil Seal (Outer)	1
26-90562	Seal (Water & Bearing)	1

## NEW STYLE 2-PIECE BODY

46-807151-A14



Replaces all parts below.



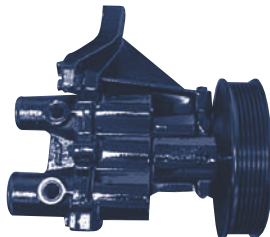
## MERCUISER (pump for serpentine belt)



46-807151-A12

Part No	Description	Qty
46-807151-A14	Body Kit	1
10-74822	Screw (Cover)	3
10-807356	Screw (Cover)	2
12-814806	Washer	5
19-59504	Plug	1
47-59362	Impeller	1
28-56662	Key	1
94576	Wearplate	1
25-94288	Quad Ring	1
26-90562	Seal (Water & Bearing)	2
30-72961	Ball Bearing	2
59501-A1	Shaft	1
52-23720	Snap Ring	1
26-72785	Oil Seal (Outer)	1
25-33465	Body O-Ring	1

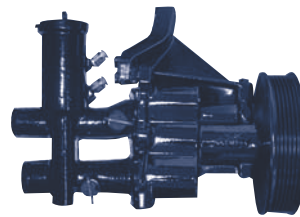
## MERCUISER (pump without air fittings)



46-862914-T10

Part No	Description	Qty
47-862232A2	Impeller	1
25-841807	O-Ring	1
26-862037	Seal (Inner Bearing)	1
862235A1	Drive Shaft Assy	1
862039	Tolerance Ring (Bearing)	1
26-862040	Seal (Outer Bearing)	1
863674A05	Cover Kit (Imp. Housing)	1
862776A01	Cover Kit (Imp. Housing)	1
22-806608A1	Plug Kit (Blue)	2
25-32509	O-Ring	2
10-4000328	Screw (Cover)	4
10-4000331	Screw (Cover)	2
862351T	Pulley	1

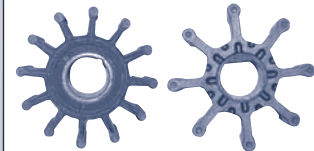
## MERCUISER (pump with air fittings)



46-862914-T11

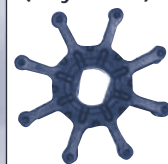
Part No	Description	Qty
47-862232A2	Impeller	1
25-841807	O-Ring	1
26-862037	Seal (Inner Bearing)	1
862235A1	Drive Shaft Assy	1
862039	Tolerance Ring (Bearing)	1
26-862040	Seal (Outer Bearing)	1
863674A05	Cover Kit (Imp. Housing)	1
862776A01	Cover Kit (Imp. Housing)	1
22-806608A1	Plug Kit (Blue)	2
25-32509	O-Ring	2
10-4000328	Screw (Cover)	4
10-4000331	Screw (Cover)	2
862351T	Pulley	1

## REPLACEMENT IMPELLERS



SH 19000  
(Key Drive)

47-59362  
(Flat Drive)



47-862232A2  
(Double Flat Drive)