

CONTENTS

ENGINE COOLING

INDEX

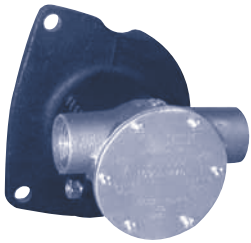
HOME

NEXT

BACK

JABSCO

120 / 150 Turbo



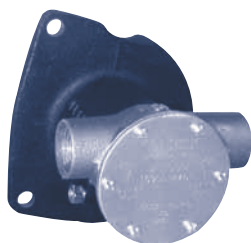
10950-2401 (3/4" Ports)

Ford Lehman # 2C48

Part No.	Description	Qty
1210-0001	Impeller	1
11830-0000	Cover	1
18753-0049	Seal Assy	1
7883-0000	Wearplate	1
490-0001	Cam	1
91003-0010	Cam Screw	1
91002-0020	Cover Screw	6
3298-0000	Gasket	1
92600-0130	Ball Bearing	2
92700-0060	Bearing Seal	1
SH 4258	Snap Ring	1
23377-0000	Shaft	1

JABSCO

150 / 180 Turbo



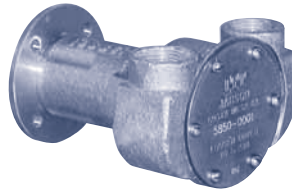
21140-2401 (1" Ports)

Ford Lehman # 2C49

Part No.	Description	Qty
17937-0001	Impeller	1
890-0000	Gasket	1
18753-0049	Mechanical Seal Assy	1
91003-0090	End Cover Screw	6
11831-0000	End Cover	1
934-0000	Cam	1
4156-0000	Wearplate	1
3180-0000	Slinger	1
92700-0060	Lip Seal	1
92600-0130	Bearing	2
18716-0000	Retaining Ring	1
23377-0010	Shaft	1
91401-0100	Key	1

JABSCO

120-5120 / 27158 / GD242 / GD363



5850-0001

Ford Lehman # 2C45

Part No.	Description	Qty
1210-0001	Impeller	1
91002-0020	Screw	6
11830-0000	End Cover	1
3298-0000	Gasket	1
92700-0060	Seal	1
92000-0210	O-ring	1
91003-0010	Screw (Cam)	1
7884-0000	Cam & Wearplate	1
3166-0000	Seal Spacer	1
3376-0000	Adaptor	1
3286-0000	Slinger	1
5857-0000	Shaft	1
92700-0060	Bearing Seal	1
92600-0130	Ball Bearing	2
3383-0000	Brg. Spacer	1
3278-0000	Coupling	1
7883-0000	Wearplate only	1

JABSCO

150 Turbo



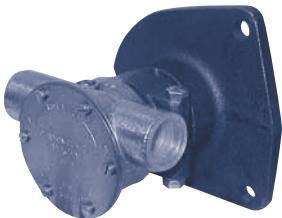
9970-200

Ford Lehman

Part No.	Description	Qty
1210-0001	Impeller	1
3298-0000	Gasket	1
18753-0049	Mechanical Seal Assy	1
91002-0020	End Cover Screw	6
11830-0000	End Cover	1
490-0001	Cam	1
91003-0010	Cam Screw	1
7883-0000	Wearplate	1
3180-0000	Slinger	1
92700-0060	Lip Seal	1
92600-0130	Bearing	2
9977	Shaft	1
3376-0000	Adaptor Ring	1
3278-0000	Coupling	1

JOHNSON

120 / 150 Turbo



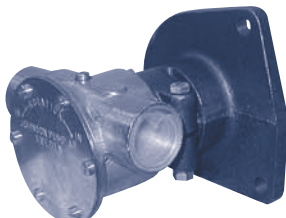
10-24140 (3/4" Ports)

Replaces Ford Lehman # 2C48

Part No.	Description	Qty
1027B	Impeller	1
09-20-115	Mechanical Seal	1
05-34-105	Seal Snap Ring	1
01-45174	Seal Washer	1
01-42401	Gasket	1
01-42398	End Cover	1
05-04-115	Cover Screw	6
01-42397	Full Cam	1
05-04-117	Full Cam Screw	1
01-45014	1/2 Cam	1
05-04-175	1/2 Cam Screw	1
01-42399	Wearplate	1
01-42400	Wearplate Pin	1
01-42402	Slinger	1
05-08-117	Ball Bearing	2
05-29-122	Bearing Seal	1
05-34-107	Snap Ring (SM)	1
05-34-117	Snap Ring (LG)	1
01-45324	Shaft	1
05-04-105	Body Clamp Bolt	1
05-01-115	Clamp Washer	1
05-05-115	Clamp Nut	1

JOHNSON

150 / 180 Turbo



10-24139 (1" Ports)

Replaces Ford Lehman # 2C49

Part No.	Description	Qty
1028B	Impeller	1
09-20-115	Mechanical Seal	1
05-34-105	Seal Snap Ring	1
05-01-121	Seal Washer	1
01-42445	Gasket	1
01-42441	End Cover	1
05-04-117	Cover Screw	6
01-42679	Full Cam	1
05-04-107	Full Cam Screw	1
01-42442	2/3 Cam	1
05-04-144	2/3 Cam Screw	1
01-42443	Wearplate	1
01-42400	Wearplate Pin	1
01-42402	Slinger	1
05-08-117	Ball Bearing	2
05-29-122	Bearing Seal	1
05-34-107	Snap Ring (SM)	1
05-34-117	Snap Ring (LG)	1
01-45324	Shaft	1
05-04-105	Body Clamp Bolt	1
05-01-115	Clamp Washer	1
05-05-115	Clamp Nut	1

JOHNSON

M35



10-24318-01

Universal #302259

Part No.	Description	Qty
1027B	Impeller	1
01-42401	Gasket	1
05-29-105	Lip Seal	1
05-08-123	Ball Bearing	2
01-45186	Washer	1
05-06-500	O-Ring	1
05-04-117	Screw	1
05-04-642	Screw	6
01-42400	Pin	1
01-45976	Cam	1
01-42398	End Cover	1
01-42399	Wearplate	1
04-45978	Shaft	1

JOHNSON

4D50 / 4D61



10-24119-5

Ford Lehman

Part No.	Description	Qty
1027B	Impeller	1
05-29-105	Lip Seal	1
01-45186	Seal Spacer	1
01-42401	Gasket	1
01-42398	End Cover	1
05-04-163	Cover Screw	6
01-42397	Cam	1
05-04-117	Cam Screw	1
01-42399	Wearplate	1
01-42400	Wearplate Pin	1
05-06-500	Slinger O-Ring	1
05-08-123	Ball Bearing	2
01-45024	Bearing Guide	1
01-45187	Shaft	1
01-45028	Splined Coupling	1