

YANMAR AND WESTERBEKE

CONTENTS

ENGINE COOLING

INDEX

HOME

NEXT

BACK

YANMAR 4LHA Series

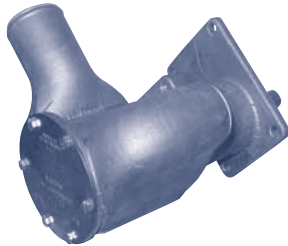


119175-42500

Johnson # 10-24535

Part No.	Description	Qty
YM 127610-42200	Impeller	1
YM 119175-42570	Cover O-Ring	1
YM X0920115000	Water Mech. Seal	1
YM 119175-42520	Wearplate	1
YM X0146648-01	Cover	1
YM X0504550	Cover Screw	6
YM X0534105000	Seal Snap Ring	1
YM 119175-42590	Seal Washer	1
YM 119175-42610	Slinger O-Ring	1
YM 119175-42510	Shaft Assy.	1
YM 119175-42540	Snap Ring (LG)	1
YM X0534210000	Snap Ring (SM)	1
YM 119175-42530	Ball Bearing	2
YM 119175-42580	Bearing Seal	1

YANMAR 6YL4, 6LY2 Series

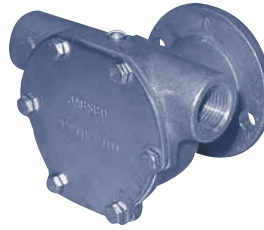


119574-42500

Johnson # 10-13170

Part No.	Description	Qty
YM 119574-42550	Impeller (JS1028B)	1
YM X0142443	Wearplate	1
YM X0506589	Cover O-Ring	1
YM X0146285	Cover	1
YM X0504550-01	Cover Screw	4
YM X0520505	Water Mech. Seal	1
YM X0534108	Seal Snap Ring	1
YM X0506537	Slinger O-Ring	1
YM X0135771	Shaft Assy.	1
YM X053425	Snap Ring (LG)	1
YM X0534108	Snap Ring (SM)	1
YM X050825	Ball Bearing	2
YM X0529137	Bearing Seal	1
YM X0146146	Cam	1
YM X0504107	Cam Screw	1

JABSCO MP 5.5M / MP 8M

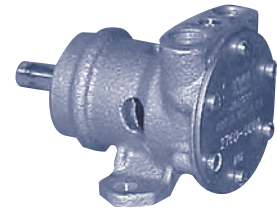


29470-2701

Yanmar

Part No.	Description	Qty
18653-0001	Impeller	1
29476-0000	Gasket	1
SP2701-1006	Seal Lip	2
SP1701-4438	Retaining Ring	1
91002-0010	Screw	6
X4020-210A	O-Ring	1
29475-0000	End Cover Brass	1
18729-0000	Retaining Ring	1
29477-0050	Shaft	1
SP2601-0457	Bearing	2
2907-0000	Cam Brass	1
91002-0090	Screw	1

JABSCO

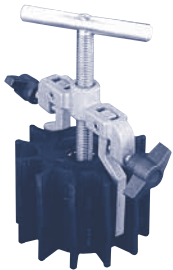


2760 Series

Yanmar

Part No.	Description	Qty
4528-0001	Impeller - Neoprene	1
90023-0001	Kit (Imp/Seal/Gasket)	1
91002-0010	End Cover Screw	6
12066-0000	End Cover	1
1189-0000	Gasket	1
91009-0050	Impeller Screw	1
4271-0000	Wearplate & Cam Assy.	1
91002-0030	Cam Screw	1
6342-0000	Slinger	1
1041-0000	Inner Bearing Seal	1
92600-0080	Ball Bearing	1
18717-0000	Retaining Ring (Bearing to Body)	1
1039-0000	Outer Bearing Seal	1
92700-0110	Seal	1
92000-0560	O-ring	1
1053-0000	Shaft	1

REPLACEMENT IMPELLERS



Westerbeke and Universal

Impeller Cross Reference

Manufacturer Part No.	Depco Part No.
11418	SH 9959K
11764	SH 10077K
11907	SH 9959K
13930	SH 10615K
18184	JA 5616-0001
32620	JS 808B
33100	SH 10077K
33104	SH 9959K
34440	JS 810B
287439	SH 10077K
295628	OB 6593
302571	JS 1027B
302875	SH 9000K

Impeller Puller page 161

JOHNSON K 34A / K 34M

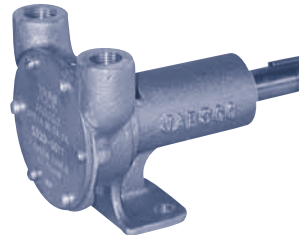


10-35187-3

Westerbeke # 45765

Part No.	Description	Qty
808B	Impeller	1
05-29-139	Lip Seal	2
01-43240	Gasket	1
01-43239	End Cover	1
05-04-642	Cover Screw	4
01-45087	Wearplate	1
01-42400	Wearplate Pin	1
05-08-130	Ball Bearing	2
05-34-131	Snap Ring (LG)	1
05-34-501	Snap Ring (SM)	1
01-42910	Cam	1
05-04-114	Cam Screw	1
05-01-120	Screw Washer	1
01-45669	Shaft	1
05-06-521	Mounting O-Ring	1
01-43238	Mounting Clamp	2

JABSCO Pulley Drive

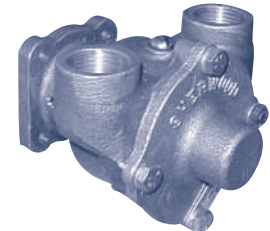


5320-0011

Westerbeke # 11830

Part No.	Description	Qty
5616-0001	Impeller	1
91002-0020	Cover Screw	6
11830-0000	End Cover	1
2995-0000	Gasket	1
7895-0001	Cam & Wearplate	1
92700-0420	Seal - Water	1
93000-0070	Brg Seal Inner	1
92700-0310	Brg Seal Outer	1
92000-0540	O-Ring	1
879-0000	Slinger	1
91002-0090	Cam Screw	1
6020-0000	Shaft & Brg	1
91701-0040	Snap Ring	1
9215-0010	Drive Key	1

SHERWOOD Flange Mount



F-95

Westerbeke # 16432

Part No.	Description	Qty
10615K	Impeller	1
1482	Cover Screw	4
12710	Lock Washer	4
1311	Pin	2
10931	Gasket	1
10929	Cam	1
10927	Seal Assy	1
4259	Snap Ring (LG)	1
4258	Snap Ring (SM)	3
12226	Shaft	1
4257	Ball Bearing	1
7070	Slinger	1
4432	Key	1
336	Drain Plug	1
10183	Cover with Bushing	1
06333	Carbon Bushing	1
12226	Shaft	1