

KOHLER ENGINE PUMPS

SHERWOOD

4 - 6 1/2 KW Gas



G-907

Kohler # 344371

Part No.	Description	Qty
9000K	Impeller	1
22546	Seal Assy.	1
12211	Ball Bearings	2
21861	Shaft	1
18663	Cam	1
19964	O-Ring	1
10195	Cam Screw	1
4258	Snap Ring (SM)	1
4259	Snap Ring (LG)	1
21858	Pulley Nut	1
19965	End Cover	1
12686	Cover Screws	4
13777	Impeller Key	1

SHERWOOD

4 - 6 Cylinder Diesel / 12.5 KW Gas



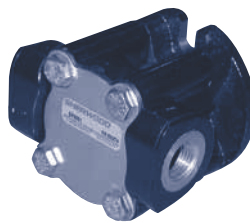
G-906 P/G-907 P

Kohler # 267373 / 246489 / 344089

Part No.	Description	Qty
9000K	Impeller	1
18570	Lip Seal (G-906P)	1
22546	Mech. Seal Assy. (G-907P)	1
12211	Ball Bearings	2
18569	Shaft (G-906P)	1
21861	Shaft (G-907P)	1
18663	Cam	1
19964	O-Ring	1
10195	Cam Screw	1
4258	Snap Ring (SM)	1
4259	Snap Ring (LG)	1
19967	Pulley (G-906P)	1
21859	Pulley (G-907P)	1
21858	Pulley Nut	1
19965	End Cover	1
12686	Cover Screws	4
13777	Impeller Key	1

SHERWOOD

5 - 7 KW Diesel



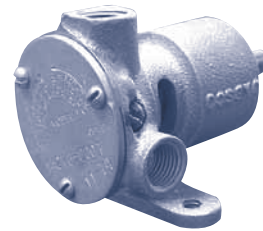
GP8001 / G8001

Kohler # 359341

Part No.	Description	Qty
8000k	Impeller	1
23447	Cover O-Ring	1
23459	Seal Assembly	1
23323	Ball Bearing	2
23443	Snap Ring (SM)	1
23325	Snap Ring (LG)	1
23366	Cover	1
23367	Cover Screws	4
23445	Shaft	1

JABSCO

2.5R27



14270-0001

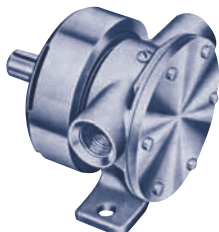
Part No.	Description	Qty
14787-0001	Impeller	1
1040-0000	Seal	1
1039-0000	Bearing Seal (Pulley Side)	1
1040-0000	Bearing Seal (Impeller Side)	1
92600-0080	Ball Bearing	1
7338-0000	Gasket	1
8089-0000	Cam	1
6342-0000	Slinger	1
91002-0010	Screw	1
18717-0000	Snap ring	1

Kohler Impeller Cross Reference

Kohler Part No.	Depco Part No.
229826	SH 9000K
359978	SH 8000K
252882	JS 1027B
250872	YM 128296-42070

JABSCO

15 hp

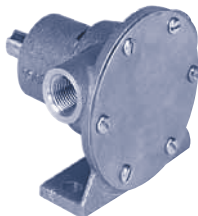


1673-9001 Old Style
(1/2" Ports)

Part No.	Description	Qty
1210-0001	Impeller - Neoprene	1
1210-0003	Impeller - Nitrile	1
11836-0000	End Cover	1
1835-0000	Gasket - Standard	1
2436-0000	Gasket - 1/2 Cam	1
91003-0010	Screw (Cam) - Standard	1
91003-0090	Screw (Cam) - 1/2 Cam	1
490-0000	Cam - Standard - Plastic	1
490-0001	Cam - Optional - Brass	1
2434-0000	Cam - 1/2 Cam - Brass	1
3078-0000	Bearing Shield	1
92600-0330	Ball Bearing	1
1161-0000	Rotating Shield	1
1554-0000	Stationary Slinger	1
1740-0000	Bearing Housing	1
91003-0010	Screw - End Cover	6
1737-0410	Shaft	1
9215-0010	Key	1
96080-0080	Seal - Mechanical	1
The following are used on Lip Seal Versions:		
3166-0000	Spacer	1
92700-0060	Seal	1
92000-0210	O-Ring	1

JABSCO

15hp

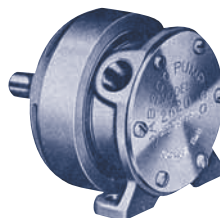


1673-1001 New Style
(1/2" Ports)

Part No.	Description	Qty
1210-0001	Impeller - Neoprene	1
1210-0003	Impeller - Nitrile	1
90015-0001	Kit - Neoprene	1
90015-0003	Kit - Nitrile	1
18753-0134	Screw Kit (7) (Cam & End Cover)	1
11836-0000	End Cover	1
18753-0133	O-Ring	1
92700-0060	Seal	1
490-0001	Cam - Full Thickness	1
2434-0000	Cam - Half Thickness	1
18753-0131	Retaining Ring	1
3286-0000	Slinger	1
18753-0130	Bearing	2
18753-0129	Shaft	1
18753-0132	Retaining Ring	1
9215-0010	Key	1

JABSCO

5hp

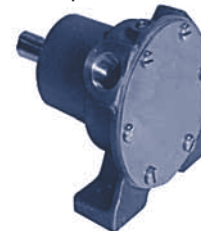


2620-0001 Old Style
(3/8" Ports)

Part No.	Description	Qty
18673-0001	Impeller - Neoprene	1
18673-0003	Impeller - Nitrile	1
90020-0001	Kit - Neoprene	1
90020-0003	Kit - Nitrile	1
11830-0000	End Cover	1
2995-0000	Gasket	1
91010-0060	Screw - Impeller	1
92700-0050	Seal - Shaft	1
92000-0430	O-Ring	1
91002-0020	Screw - End Cover	6
2907-0000	Cam	1
91002-0090	Screw - Cam	1
3078-0000	Bearing Shield	1
92600-0330	Ball Bearing	1
1161-0000	Rotating Shield	1
1554-0000	Stationary Slinger	1
345-0000	Bearing Housing	1
11847-0000	Key - Shaft Drive	1
688-0240	Shaft	1

JABSCO

5hp - #A249861



2620-1001 New Style
(3/8" Ports)

Part No.	Description	Qty
18673-0001	Impeller - Neoprene	1
18673-0003	Impeller - Nitrile	1
90020-0001	Kit - Neoprene	1
90020-0003	Kit - Nitrile	1
11830-0000	End Cover	1
18753-0125	O-Ring	1
92700-0050	Seal - Shaft	1
18753-0121	Screw Kit (7) for Cam & End Cover	1
2907-0000	Cam	1
92600-0130	Ball Bearing	2
18715-0000	Retaining Ring (Bearing Position)	1
18753-0123	Retaining Ring (Bearing to Body)	1
18753-0124	Shaft	1
11847-0000	Key - Shaft Drive	1
879-0000	Slinger	1

CONTENTS

ENGINE COOLING

INDEX

HOME

NEXT

BACK