

VOLVO, PHASOR AND NORTHERN LIGHTS

CONTENTS

ENGINE COOLING

INDEX

HOME

NEXT

BACK

Volvo Impeller Cross-Reference

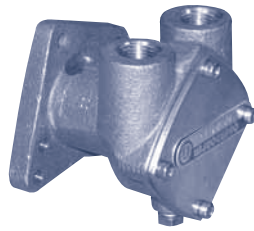
Volvo Part No.	Depco Part No.
801277	JS 10288 / JA 920-0001
803729	JS 806B / JA 4528-0001
804696	JS 1026B
807904	JS 1029B / JA 836-0001
818680	JA 4598-0001
825940	JS 1027B / JA 1210-0001
825941	JS 1028B / JA 920-0001
825942	JS 1029B / JA 836-0001
831182	JS 801B / JA 4568-0001
833550	JS 806B / JA 42528-0001
833995	JA 22405-0001
834794	JA 22120-0001
835182	JS 801B / JA 4568-0001
835512	SH 9959K
835874	SH 10615K
842857	JS 802B
844683	JS 802B
845796	JS 802B
860203	JS 1027B / JA 1210-0001
875573	JS 801B / JA 4568-0001
875575	JS 801B / JA 4568-0001
875583	JS 808B
875593	JS 1028B / JA 920-0001
875660	JS 1029B / JA 836-0001
875697	JS 814B / JA 17936-0001
875807	JS 806B / JA 4528-0001
875808	JS 1026B
875811	JS 1027B / JA 1210-0001
897055	JS 1026B
3854286	SH 9959K

Volvo Pump Cross-Reference

Volvo Pump No.	Depco Pump No.
804959	JA 9400-0001
807368	Replaced by JS 10-35157-3*
820694	JA 10770 Series
822787	JS 10-21915-2 / JA 10770 Series
825916	JS 10-31917-1 / JA 9900-0001
826456	JA 22740 Series
828026	JS 10-32621-2
829895	Replaced by JS 10-35098-3*
831178	JS 10-32058-1
833415	Replaced by JS 10-35157-3*
833522	Replaced by JS 10-35157-3*
833883	Replaced by JS 10-35157-3*
836326	JS 10-22335-3
837370	JS 10-24017-3
837371	JS 10-24017-4
837915	JS 10-24017-4
837916	JS 10-24017-3
837917	JS 10-21915-2
837920	JS 10-21915-2
837922	JS 10-24017-4
837923	JS 10-24017-4
838314	JS 10-24061-4
838522	JS 10-24130-2
840557	JS 10-24178-2
841860	JS 10-24076-1 / JS 10-24228-1
842274	JS 10-22335-4
842275	JS 10-22335-4
842843	JS 10-24061-3
844971	JS 10-24130-3
846354	JA 10770 Series
846355	JA 10770 Series
846356	JA 10770 Series
855517	JS 10-32621-2
855578	JS 10-32621-3
856952	Replaced by JS 10-24228-1
857451	Replaced by JS 10-24228-1
858065	JS 10-35157-1
858150	JS 10-24268-4
858408	JS 10-24268-5
858469	JS 10-24277-3
858470	JS 10-24277-4
866739	JA 10770 Series
3829310	JA 10770 Series
3829311	JA 10770 Series
3852398	SH G9901
3852399	SH G9902
3855079	SH G9903

* Requires (2) 01-43238 Clamps

OBERDORFER

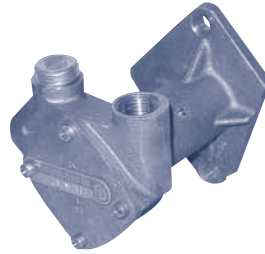


202M-16

Phasor 1/2" FPT Ports

Part No.	Description	Qty
6593	Impeller	1
6597	Cover	1
6592	Cam	1
7300-71	Cam (Screw)	1
8767	Shaft	1
6599	Gasket	1
5091	Carbon Brg.	1
5463	Lip Seal	2
5373	Snap Ring	1
5385	Screws (Cover)	4
11691	Kit	1
WB 298485	Mounting Gasket	1

OBERDORFER

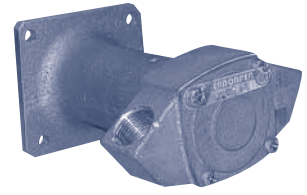


202M-17

Phasor

Part No.	Description	Qty
6593	Impeller	1
15385	Cover Screw	4
8870	Shaft	1
5847	Ball Bearings	2
8868	Bearing Seals	2
5373	Snap Ring Seal (Small)	3
7557	Snap Ring (Large)	1
7639	Snap Ring Seal (Large)	1
8927	Washer	1
8874	Slinger	1
32592	Seal Assy	1
6597	Cover	1
6599	Gasket	1

OBERDORFER

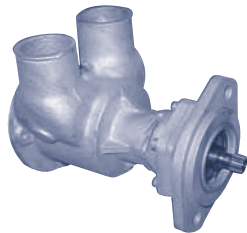


302M-3

Phasor

Part No.	Description	Qty
6620	Impeller	1
8231	O-Ring	1
32886	Seal Assy.	1
5382	Retaining Ring	1
5504	Screw	4
5925	Snap Ring (Large)	1
5926	Snap Ring (Small)	2
5928	Ball Bearing	2
6609	Lip Seal	2
6736	Cover	1
6739	Key	1
9963	Shaft	1

JABSCO

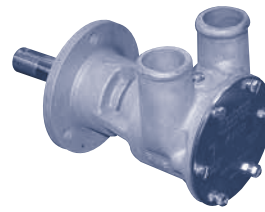


30890 / 30900

Northern Lights

Part No.	Description	Qty
30919-0001	Impeller	1
30929-1000	Cam	1
30914-1000	End Cover	1
30915-1000	Wearplate	1
18753-0318	Ball Bearing	2
18753-0342	Mechanical Seal	1
18753-0469	Bearing Seal	1
18753-0343	Cover O-Ring	1
92000-0560	Slinger O-Ring	1
92000-6020	Cam Screw O-Ring	1
18753-0345	Snap Ring (SM)	1
18753-0344	Snap Ring (LG)	3
18753-0346	Screw Kit (Cover & Cam)	1

JABSCO



50310-1001

Northern Lights (65 kw Genset)
John Deere

Part No.	Description	Qty
17937-0001	Impeller	1
X3001-209F	Cover Screw	6
4156-0010	Wearplate	1
11831-0000	End Cover	1
X4020-354A	Cover O'Ring	1
91004-0090	Cam Screw	1
SP6080-0469	Mech Seal	1
SP2600-0500	Ball Bearing	2
SP2700-1027	Oil Seal	1
934-0000	Cam	1
50317-0000	Shaft	1

JOHNSON

M6140A / L6140A



10-24430-01

Northern Lights # 25-15022

Part No.	Description	Qty
814B	Impeller	1
01-35698	Shaft	1
01-45018	Cam	1
01-42426	Pin	1
01-42423	Wearplate	1
01-42424	Gasket	1
05-34-108	Snap Ring (SM)	1
05-34-502	Snap Ring (LG)	1
01-42422-1	End Cover	1
01-42427-15	Slinger	1
05-29-517	Lip Seal	1
05-20-118	Mechanical Seal	1
05-08-505	Ball Bearing	1
05-02-101	Bolt Washer Housing	4
05-01-131	Bolt Washer Housing	4
05-04-128	Housing Bolt	4
05-04-108	Cam Screw	1
05-04-148	Cover Screw	5
05-05-524	Shaft Lock Nut	1
05-02-520	Shaft Washer	1