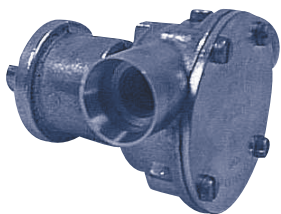


# VOLVO ENGINE PUMPS

- CONTENTS
- ENGINE COOLING
- INDEX
- HOME
- NEXT
- BACK

## JOHNSON

Replaces Johnson F35B Series



10-35157 - 1 & 2 (Slip Ports)  
10-35157 - 3 & 4 (Threaded Ports)

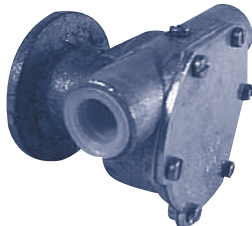
Updated Model with Ball Bearings

Part No.	Description	Qty
808B	Impeller	1
01-45556	Shaft	1
01-42910	Cam (10-35157-1 & -3)	1
05-04-114	Cam Screw for above	1
01-42415	Cam (10-35157-2 & -4)	1
05-04-553	Cam Screw for above	1
01-43239	Cover	1
01-43240	Gasket	1
01-45087	Wearplate	1
01-42400	Pin	1
05-04-642	Cover Screw	4
05-01-120	Cam Screw Washer	1
05-29-139	Seal	2
05-08-130	Ball Bearing	2
05-34-131	Snap Ring	1

\*Requires (2) 01-43238 clamps to mount.

## JOHNSON

Replaces Johnson F4B Series



10-35098-3 (Slip Ports)  
10-35098-2 (Threaded Ports)

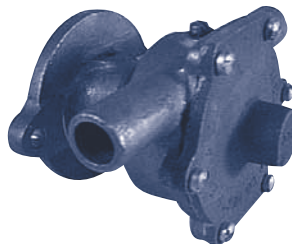
Updated Model with Ball Bearings

Part No.	Description	Qty
1026B	Impeller	1
05-08-130	Ball Bearing	2
05-34-131	Ret. Ring	1
05-29-139	Lip Seal	2
05-04-642	Screw	6
05-04-124	Screw	1
05-04-114	Screw (Cam)	1
01-45284	Gasket	1
01-45282	Cover	1
01-42389	Cam	1
01-45235	Shaft	1

\*Requires (2) 01-43238 clamps to mount.

## JOHNSON

MD17C / AQ115 / AQ130



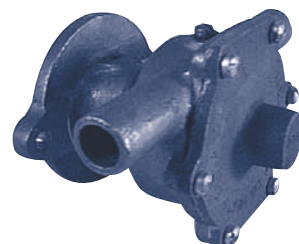
10-31917-1\*  
Volvo # 825916

Part No.	Description	Qty
1026B	Impeller	1
05-04-114	Screw (Cover)	6
05-04-115	Screw (Cam)	1
05-29-120	Lip Seal	2
01-42391	Gasket	1
05-04-124	Screw (Imp)	1
01-42390	Shaft	1
01-42389	Cam	1

\*Pump Discontinued, use 10-35098-2 with (2) 01-43238 clamps to replace.

## JABSCO

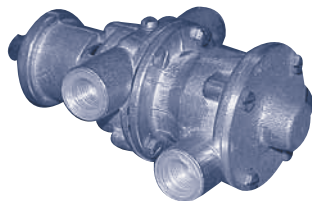
AQ95-140 / BB30 / MD3



9900-0001  
Volvo # 825916

Part No.	Description	Qty
18673-0001	Impeller	1
9905-0000	End Cover	1
10817-0000	Gasket	1
9907-0000	Shaft	1
10818-0000	Cam	1
91002-0020	Screw (Cam)	1
92701-0040	Seal	2
92000-0230	O-Ring	1
91002-0090	Screw	6

## JOHNSON F35B Double Pocket

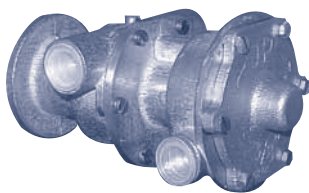


10-24143 / 10-35157

Back Pump  
Use parts from 10-35157 (above)

Part No.	Description	Qty
808B	Impeller	1
01-45400	Gasket (Fresh Water)	1
01-43240	Gasket (Sea Water)	1
05-04-123	Cam Screw	1
05-04-553	Screw	1
05-01-120	Washer	1
05-29-502	Lip Seal	1
01-45110	Bushing	1
01-42400	Pine	1
01-45087	Wearplate	1
01-43240	Gasket	1
01-45359	End Cover	1
01-42415	Cam	1
01-45360	Shaft	1

## JOHNSON F4B Double Pocket

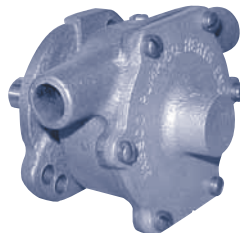


10-24144 / 10-35098

Back Pump  
Use parts from 10-35098 (above)

Part No.	Description	Qty
810B	Impeller	1
01-45284	Gasket	1
01-42400	Pin	2
05-04-176	Screw	12
05-04-115	Cam Screw	1
05-29-139	Lip Seal	2
01-45207-3	Bushing	1
01-42388-2	End Cover	1
01-42389	Cam	1
01-45313	Shaft	1

## JABSCO MB 16A

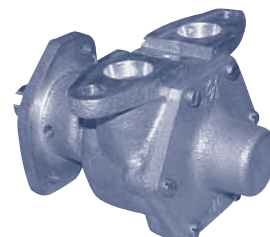


9400-0001  
Volvo # 804959

Part No.	Description	Qty
18673-0001	Impeller	1
9406-0000	Cover	1
9408-0000	Gasket	1
9407-0000	Shaft	1
2907-0000	Cam	1
91002-0090	Cam Screw	1
92701-0040	Seal	2
91002-0090	Cover Screw	6

## JOHNSON

AQDZ1A&B, BB140-170, MD21 & 42



10-32058-1  
Volvo # 831178

Part No.	Description	Qty
801B	Impeller	1
01-32064	End Cover	1
01-42397	Cam	1
01-42644	Shaft	1
01-42636	Gasket	1
05-29-105	Seal	2
05-06-501	O-Ring	1
05-04-117	Cam Screw	1
05-04-115	Cover Screw	6
01-42399	Wearplate	1
01-42400	Pin	1
01-42646	Key	1
01-42607	Bushing	2